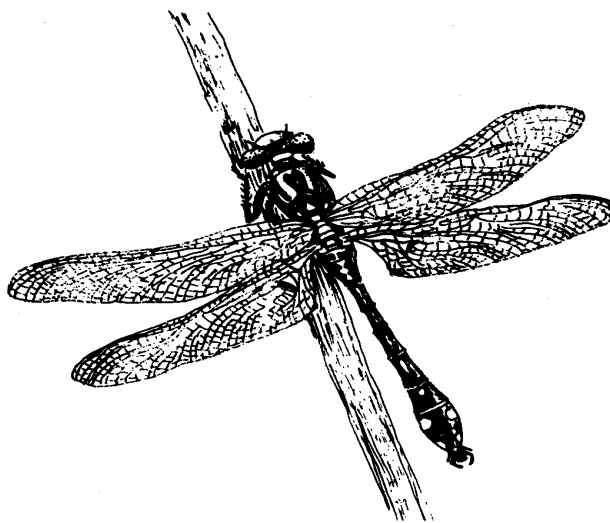




## Club-Tailed Dragonfly (*Gomphus vulgatissimus*)



**The main text of this plan has not been reviewed since 2002 and as such is included only for background information.**

The club-tailed dragonfly is the only representative of its genus resident in Britain and it is nationally scarce. It is a secretive medium-sized dragonfly with yellow-green and black markings and a noticeable club-shaped tail. It favours slow flowing rivers, with silt deposits for the larvae and adjacent tree cover for the adults. The larvae may take up to five years to mature with the peak adult emergence occurring in late May and early June.

### **1 Objectives and Targets**

#### **1.1 Objectives**

- A. Maintain existing populations and range of club-tailed dragonflies in Shropshire, ensuring no further loss or fragmentation.
- B. Enhance the status of club-tailed dragonflies in Shropshire by increasing the area of existing sites through appropriate management or through creating new habitat.
- C. Establish and maintain a comprehensive understanding of club-tailed dragonfly distribution, status and ecological requirements in Shropshire through research, survey and monitoring.
- D. Promote communication.

#### **1.2 Targets**

- Organise training day and survey River Severn by 2008 in order to establish population size.
- Maintain Club-tailed Dragonflies current range of 33 tetrads (recorded between 1989 and 2006) until at least 2010.
- Carry out three targeted surveys of potentially suitable habitats in order to seek additional populations by 2010.

# Shropshire Biodiversity Action Plan

## 2 Current Status

### 2.1 Importance

The River Severn is one of only seven rivers in the country known to support the club-tailed dragonfly. Shropshire's population is thought to be the strongest in Britain and is therefore considered to be very significant at a national level.

### 2.2 Trends

The club-tailed dragonfly is nationally scarce and thought to be declining. In Shropshire it is not rare but confined to areas of suitable habitat along main river channels that have adjacent woodland and scrub. It is not known whether population levels in Shropshire are changing.

### 2.3 Population and Distribution

It is distributed patchily along the length of the River Severn and from the Severn-Vyrnwy confluence to the Wyre Forest in southeast Shropshire. Club-tailed dragonflies favour slow flowing, shallow, silty bottomed sections of the River Severn with adjacent woodland for shelter and feeding. It has also been recorded up to 10 miles from the Severn in pools and meres such as Shomere, Betton, Berrington, Chelmarsh and Dudmaston Pools.

## 3 Current Factors Affecting the Habitat

- Loss of adjacent hunting territory and tree cover (woodland, hedgerows and scrub) through changes in adjoining land use.
- Pollutants such as agricultural and industrial effluents leading to a decline in water quality.
- Decrease in water levels due to abstraction.
- Development of fisheries that can cause bankside damage and increased predation.
- Excessive dredging which leads to damage in larval populations.
- Bankside drainage due to canalisation and other works, which destroys club-tailed dragonfly habitat.

## 4 Current Action

### 4.1 Policy and Protection

- No specific action at present.

### 4.2 Management, Research and Survey

- Records collected by County Dragonfly Recorder to assess population trends.

## 5 Key Habitats

- The River Severn and connected meres and pools

## 6 Complementary Plans

Shropshire Rivers and Streams HAP

## Shropshire Biodiversity Action Plan

### 7. Actions

Habitat / Species	Action code	Action text	Location of action	Start date	End date	Lead	Assisting
Club-tailed Dragonfly	SHR CTD HS 01	Prevent detrimental management of banks on slow-flowing rivers to maintain and increase areas of suitable habitat (e.g. #1 ensure river banks are not cut/grazed between April-July; #2 ensure field margins are not ploughed too close to river bank).	River Severn, Shropshire	2006	-	FWAG	SC SWT
Club-tailed Dragonfly	SHR CTD HS 02	Ensure that flood prevention measures do not damage the habitats required by the club-tailed dragonfly.	River Severn, Shropshire	2006	-	EA	SC
Club-tailed Dragonfly	SHR CTD HS 03	Maintain present water quality in the River Severn and nearby meres and pools; report annually on water quality.	River Severn, Shropshire	2006	-	EA	FWAG
Club-tailed Dragonfly	SHR CTD SU 01	Record transect data over known existing population(s) to establish base-line data (using techniques applied along the river in Worcestershire).	River Severn, Shropshire	2006	2007	BDS	SWT
Club-tailed Dragonfly	SHR CTD SU 02	Resurvey the population every year to monitor changes in population size.	River Severn, Shropshire	2008	2010	BDS	SWT
Club-tailed Dragonfly	SHR CTD SU 03	Survey one potentially suitable site per year in order to seek additional populations.	River Severn, Shropshire	2008	2010	BDS	SWT
Club-tailed Dragonfly	SHR CTD SU 04	Encourage volunteer participation in Dragonfly Recording Network.	River Severn, nearby meres & pools, Shropshire	2006	-	BDS	SWT

#### Key to Organisations

BDS	British Dragonfly Society
SWT	Shropshire Wildlife Trust
EA	Environment Agency
SC	Shropshire Council
FWAG	Farming & Wildlife Advisory Group

**Plan Author:** Caroline Daguët, British Dragonfly Society

**Plan last revised:** July, 2006 **Plan updated** by Fran Lancaster 17 December 2007

**Pdf correct on** 23.03.2009