

# Sustainability Group - Information Sheet

Protecting and enhancing Shropshire's environment



## VAT stocks 2006

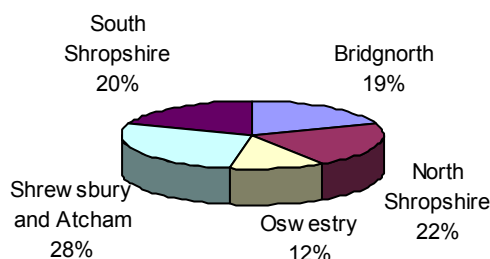
E30/002

**Table 1: VAT registrations and deregistrations by district 2006**

	VAT Registrations	VAT Deregistrations	VAT Stocks at end of 2005	New Business Start-up Rate	Business Closure Rate
Bridgnorth	220	145	2,595	8.5%	5.6%
North Shropshire	220	165	2,865	7.7%	5.8%
Oswestry	130	80	1,555	8.4%	5.1%
Shrewsbury & Atcham	305	195	3,680	8.3%	5.3%
South Shropshire	160	160	2,615	6.1%	6.1%
Shropshire	1,035	745	13,320	7.8%	5.6%
West Midlands	14,795	11,845	164,805	9.0%	7.2%
Great Britain	177,765	139,205	1,892,215	9.4%	7.4%

Source: Office for National Statistics (Nomis) *Vat Registrations and Deregistrations*, Crown Copyright 2007

**Figure 1 Distribution of VAT Registered Businesses in Shropshire 2006**



At the end of 2006, there were 13,320 VAT registered businesses in Shropshire (table 1). Shrewsbury and Atcham District has the largest share in the county, 28% or 3,680. Oswestry had the smallest share of 12% or 1,555.

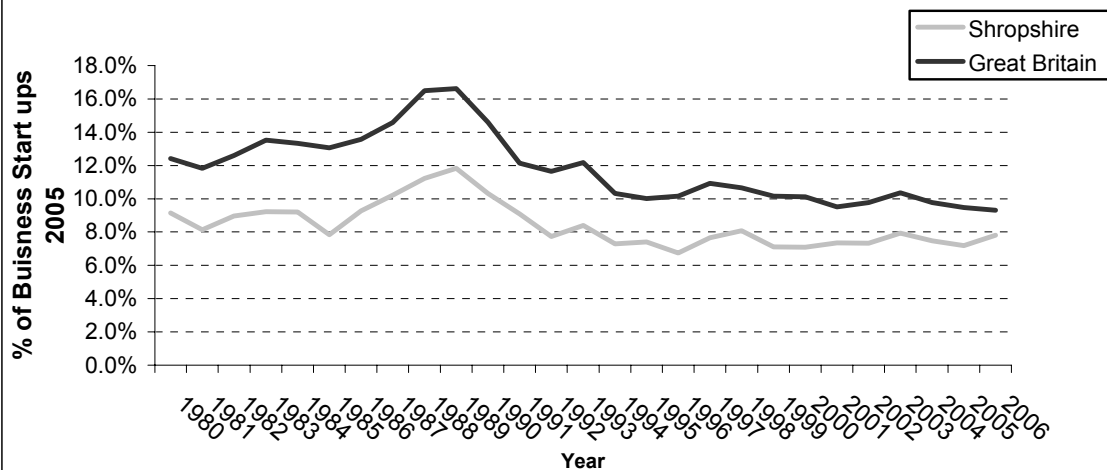
In 2006 there were 1035 new VAT registered businesses in Shropshire, representing 7.8% of the total VAT registered companies, in the county. This is compared with an 9.4% business start up rate in Great Britain. Shrewsbury and Atcham had the largest business start up rate of 8.3% and South Shropshire had the lowest rate of 6.1%. However business closure rates in the county and in each of the five districts are lower than national and regional averages.

The overall trend in Shropshire mirrors the national trend for business start up's, however rates in Shropshire are lower than the national and regional averages.

For further information contact The Sustainability Group, Economy and Environment Services, Shropshire County Council, Shirehall, Abbey Foregate, Shrewsbury, SY2 6ND. Tel. (01743) 252562, fax (01743) 252505, email [sustainability@shropshire-cc.gov.uk](mailto:sustainability@shropshire-cc.gov.uk)  
Visit our web site at [www.shropshire.gov.uk/factsfigures.nsf](http://www.shropshire.gov.uk/factsfigures.nsf)



**Figure 2 Percentage Increase or Decrease in the number of Business Start-ups  
1980 - 2006**



### VAT by Industry

**Table 1: Vat Stocks at the End of 2006 by Industry**

Vat Industry (SIC92)	Shropshire		West Midlands		Great Britain	
	No.	%	No.	%	No.	%
AB - Agriculture; fishing	3,045	22.9	11,620	7.1	129,490	6.8
CE - Mining; energy/water	10	0.1	100	0.1	1,740	0.1
D - Manufacturing	875	6.6	17,460	10.6	149,090	7.9
F - Construction	1,495	11.2	19,165	11.6	218,710	11.6
G - Wholesale & retail	2,540	19.1	36,685	22.3	391,000	20.7
H - Hotels & restaurants	960	7.2	11,470	7.0	138,010	7.3
I - Transport & communications	600	4.5	8,170	5.0	82,605	4.4
J - Finance	90	0.7	1,310	0.8	20,240	1.1
K - Real Estate	2,755	20.7	45,390	27.5	585,825	31.0
LO - Public administration; other	760	5.7	10,865	6.6	145,660	7.7
MN - Education; health	190	1.4	2,570	1.6	29,845	1.6
<b>Total</b>	<b>13,320</b>	<b>100.0</b>	<b>164,805</b>	<b>100.0</b>	<b>1,892,215</b>	<b>100.0</b>

Source: Office for National Statistics (Nomis) Vat Registrations and Deregistrations, Crown Copyright 2007

The table shows that Shropshire is heavily dependent on Agriculture & Fishing, with 22.9% of VAT registered businesses falling into this category, compared to 7.1% in the Region and 6.8% in Great Britain. The next highest concentration in Shropshire can be found in Real Estate (20.7%), the Wholesale and Retail Trades (19.1%), and Construction (11.2%).

## Notes

The VAT figures, which are published annually, are based on local authority districts and data is also available for counties, regions, GB and the UK. Information is available on the number of businesses that register and deregister for VAT each year and the stock of registered businesses at the end of each year.

The figures can be used to measure diversification and health of the Shropshire and district economies. Comparisons with other areas highlight characteristics that are particular to the district and can point toward areas of potential risk, such as concentrations in one or two industrial groups. VAT registrations give one of the most complete accounts of businesses in the County. However, they do not include all businesses. The figures exclude small businesses that have a turnover below the registration threshold and those businesses and organisations that are exempt from VAT.

Changes in the number of registered businesses can be monitored on an annual basis, although registrations and deregistration do not necessarily correspond to the birth and death of a company. For example, a business may deregister because its turnover has fallen below the threshold or it may have been trading for some time but has only just reached the registration threshold.