

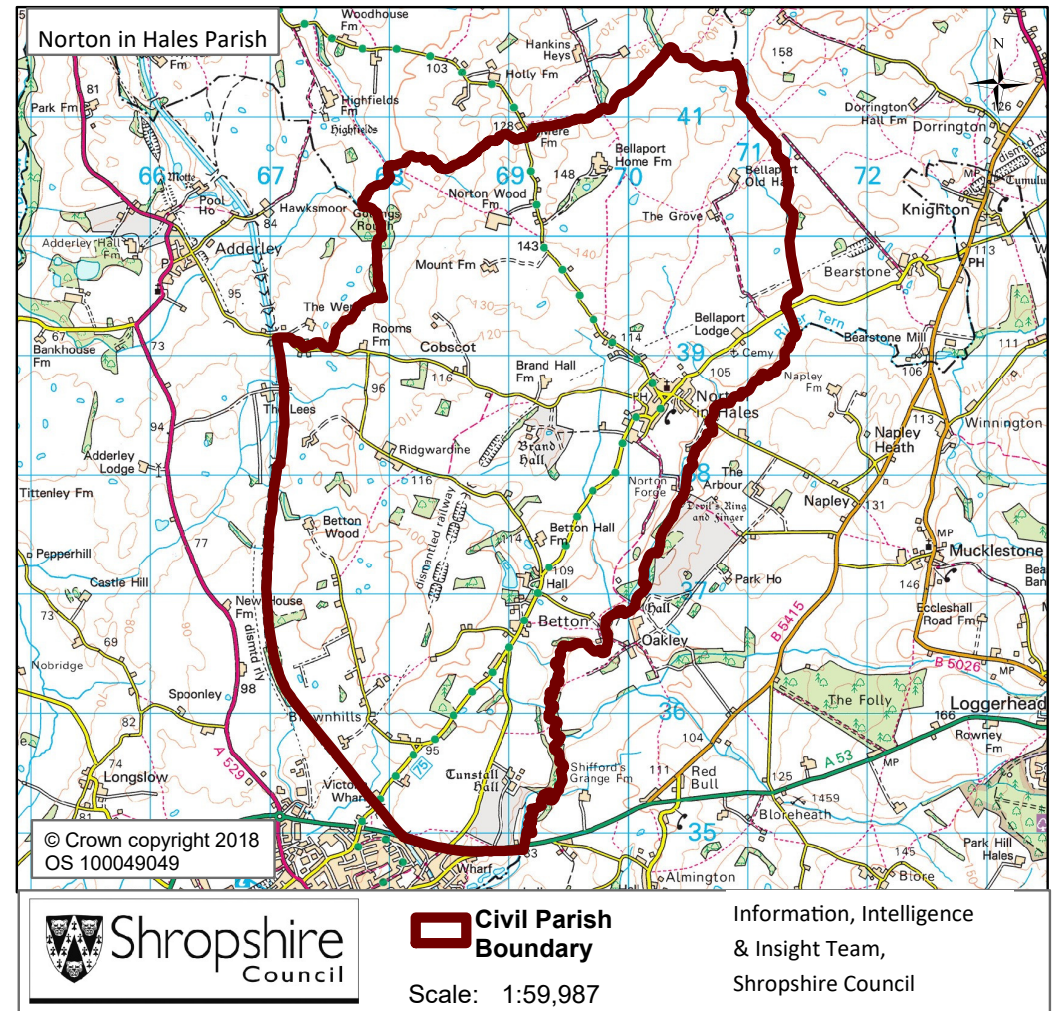
Norton in Hales Parish

Contents

| | |
|--------------------------------|---|
| Population | 2 |
| Health | 4 |
| Index of Multiple Deprivation | 5 |
| Housing | 6 |
| Unemployment and Labour Market | 7 |

| Key Facts: | Norton in Hales Parish |
|---|--|
| Area: | 1839.3 hectares |
| Population Density: | 0.30 persons per hectare |
| Total Population | 620 (293 males, 327 females) |
| Household Population: | 589 (95.0%) |
| Households: | 246 |
| Dwellings: | 252 |
| Communal Establishment no. / population | 1 Communal Establishments 31 residents (5.0% of total population) |

Source: 2011 Census, Office of National Statistics



Norton in Hales Parish

Population Age Structure

Table: Population by five year age group (2011 Census)

| | Total Population | % of Total Population | | | |
|-----------------|------------------|-----------------------|------------|---------------|---------|
| | | Norton in Hales | Shropshire | West Midlands | England |
| All ages | 620 | 100.0 | 100.0 | 100.0 | 100.0 |
| 0 – 4 | 18 | 2.9 | 5.1 | 6.3 | 6.3 |
| 5 – 9 | 40 | 6.5 | 5.1 | 5.8 | 5.6 |
| 10 – 14 | 45 | 7.3 | 5.9 | 6.1 | 5.8 |
| 15 – 19 | 37 | 6.0 | 6.2 | 6.6 | 6.3 |
| 20 – 24 | 19 | 3.1 | 5.4 | 6.8 | 6.8 |
| 25 – 29 | 14 | 2.3 | 5.1 | 6.5 | 6.9 |
| 30 – 34 | 14 | 2.3 | 5.0 | 6.1 | 6.6 |
| 35 – 39 | 32 | 5.2 | 5.8 | 6.4 | 6.7 |
| 40 – 44 | 60 | 9.7 | 7.2 | 7.3 | 7.3 |
| 45 – 49 | 52 | 8.4 | 7.7 | 7.2 | 7.3 |
| 50 – 54 | 47 | 7.6 | 6.9 | 6.3 | 6.4 |
| 55 – 59 | 48 | 7.7 | 6.6 | 5.7 | 5.7 |
| 60 – 64 | 36 | 5.8 | 7.3 | 6.0 | 6.0 |
| 65 – 69 | 51 | 8.2 | 6.2 | 5.0 | 4.7 |
| 70 – 74 | 35 | 5.6 | 4.9 | 4.0 | 3.9 |
| 75 – 79 | 23 | 3.7 | 3.8 | 3.2 | 3.1 |
| 80 – 84 | 17 | 2.7 | 2.9 | 2.4 | 2.4 |
| 85 – 89 | 24 | 3.9 | 1.8 | 1.5 | 1.5 |
| 90 Plus | 8 | 1.3 | 0.9 | 0.7 | 0.8 |

- Early years: 2.9% (18 children) of the population were aged 0 to 4 years in March 2011. This compares with 5.1% at County level, 6.3% regionally and 6.3% nationally.
- School age: 18.1% (112 children) of the population were aged 5 to 17 years in March 2011. This compares with 14.9% at County level, 15.8% regionally and 15.1% nationally.
- Working age: 53.5% (332 people) of the population were aged 18 to 64 years in March 2011. This compares with 59.3% at County level, 61.0% regionally and 62.3% nationally.
- Retirement age: 25.5% (158 people) of the population were aged 65 and over in March 2011. This compares with 20.7% at County level, 16.9% regionally and 16.3% nationally.
- Over 85 year olds: 5.2% (32) of the population were aged 85 and over in March 2011. This compares with 2.7% at County level, 2.2% regionally and 2.2% nationally.

Source: 2011 Census, National Statistics.

Please note: Ward boundary changes in 2009 mean it is not possible to compare over time

Norton in Hales Parish

Diversity

- The 2011 Census showed Norton in Hales Parish had a black and minority ethnic group population of 7 (1.13%). The largest broad ethnic group is 'Mixed / Other' (within this the largest group is 'White and Asian / Other ethnic group').
- When asked about their religion 22.1% (137 people) identified themselves as having no religion or did not state it on the form. The majority of people (77.1%) identified themselves as Christian and 0.8% (5 people) identified themselves as having an alternative religion.
- The 2011 Census showed that 0 people could not speak English well and 0 people could not speak English at all.

Car Ownership

- The 2011 Census showed that 24 households (9.8%) did not own a car and subsequently are reliant on other forms of transport such as public transport services. In total 437 cars are owned by households resident in the place plan area.

Norton in Hales Parish

Health

General Health

The 2011 Census asked three questions relating to health and the provision of unpaid care. The questions relate to whether people felt their general health was good, whether they looked after or gave help or support to other family members, friends, neighbours or others and lastly whether their day to day activities were limited because of a health problem or disability.

At the time of the 2011 Census 48% of people in Norton in Hales said that they felt they were in “Very Good Health”, this compares to 46% for Shropshire as a whole.

1.6% reported that they were in “Very Bad Health”. This is slightly higher than the overall result for Shropshire (1%).

Provision of Unpaid Care

The question asked “do you look after, or give any help or support to family members, friends, neighbours or others because of either; a long term physical or mental ill health/disability? or because of problems related to old age?”

At the time of the Census 10% said that they were providing 1 to 19 hours of unpaid care a week. This is slightly higher than the Shropshire figure of 7%.

1% said they provided between 20 and 49 hours per week unpaid care. This is in line with the Shropshire figure of 1%.

3% said they provided over 50 hours of unpaid care. This is slightly higher than the figure for Shropshire as a whole (2%) and England & Wales (2%).

Long Term Illness or Disability

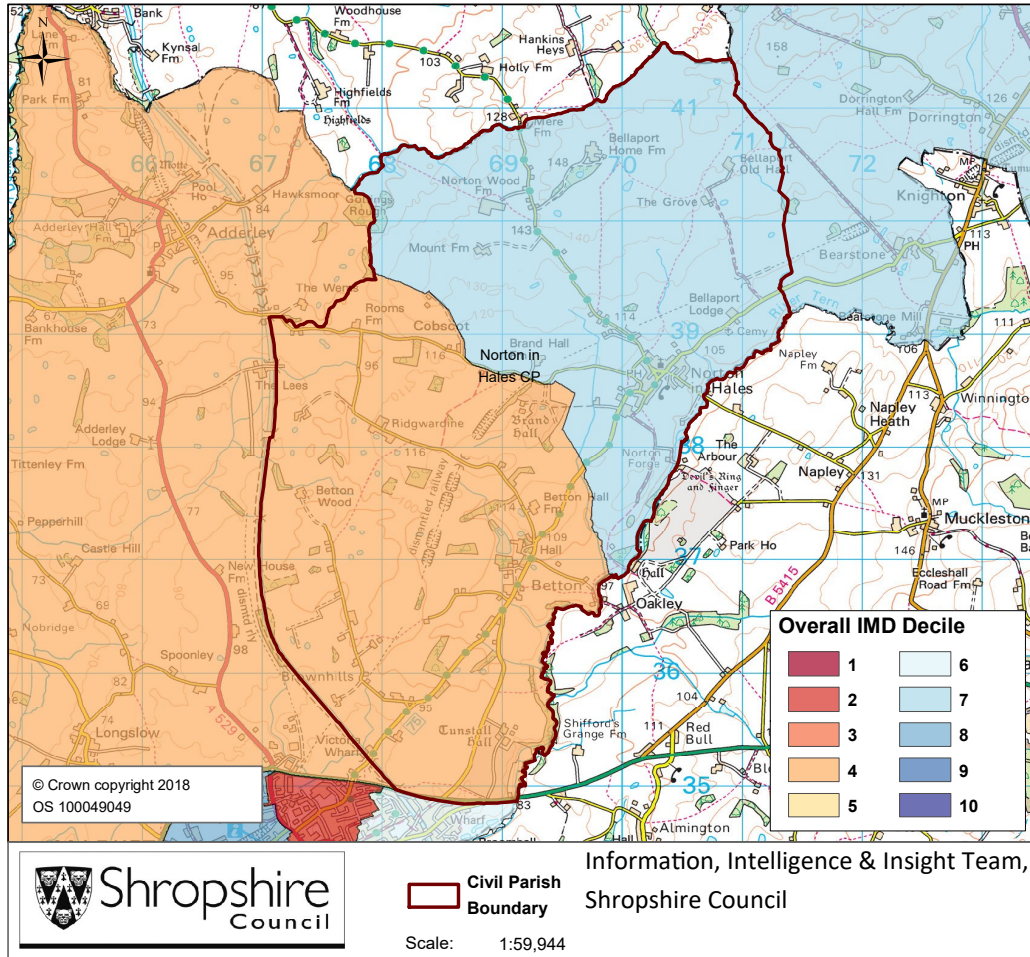
The Census asked “Are your day-to-day activities limited a lot due to a health problem or disability which has lasted, or is expected to last, at least 12 months?”

11% said that their day-to-day activities limited a lot due to a health problem or disability. This is higher than the figure for Shropshire as a whole and that of 9% for England and Wales.

The percentage who reported their day-to-day activities were limited a little was 9%. This is less than the figure of 10% for Shropshire as a whole.

Norton in Hales Parish

Index of Multiple Deprivation



The lower super output areas that cover Norton in Hales Parish fall within Decile 4 and 7 nationally.

Decile 1 is the most deprived nationally and Decile 10 the least deprived nationally.

Source: IMD 2015, Department for Communities and Local Government © Crown Copyright 2018

Norton in Hales Parish

Housing

- There were 246 households in Norton in Hales at the time of the 2011 Census.
- The parish had 620 usual residents and covers an area of 1839 hectares.
- 111 households were owner occupiers (owned outright) equating to 45.1% of all households. There were 74 households (30.1%) who owned their home with a mortgage or loan.
- There were 26 households (10.6% of all households) that privately rented their home from a landlord. There were also 4 households (1.6% of all households) who privately rented from a landlord classified as 'Other'.
- 0 households were renting social housing from the Council totalling 0.0% of all households. There were also 20 households (8.1%) renting social housing from 'Other' sources.
- In Norton in Hales there were 157 detached dwellings representing 62.3% of all dwellings. There were also 74 semi-detached and 12 terraced dwellings equating to 29.4% and 4.8% respectively.
- 11.0% of all households were one person pensioner households.
- 28.1% of households in the area had dependent children. The number of married couple households with dependent children was 43 and the number of cohabiting couples with dependent children was 11.
- There were 13 lone parent households (with dependent children), which equates to 5.3% of all households.

Norton in Hales Parish

Unemployment and Labour Market

Unemployment

- At the time of the Census, there were 3 residents who were unemployed but available for work. This is 0.7% of the 16-74 year old population, compared to 3.3% for Shropshire.
- 1 young people (aged 16-24) were unemployed, plus a further 1 who were 50 to 74.
- Long term unemployment is also an issue – 33.33% of all unemployed people were classed as long-term unemployed in 2011. This is the equivalent of 1 people.

Labour Force

- 309 Norton in Hales residents aged 16-74 are economically active.
- 32.7% of the Norton in Hales population has level 4 or above qualifications compared with
- 27.5% in Shropshire and 27.4% in England.
- The number with no formal qualifications at all stands at 117 people – at 23.2% of the population (aged over 16), this compares with the county average of 22.5%.
- 47.3% of the population work in standard occupation classifications 1-3 (managers, directors and senior officials, professional, associate professional and technical) and 16.1% work in standard occupation classifications 8 and 9 (process, plant and machine operatives and elementary occupations).

Travel to Work (Census 2011)

- 21.3% of the population in Norton in Hales are self-employed, and 12.0% work from home compared with 5.6% for Shropshire.

The car is used as the main means of travel to work for 50.5%, while 0.9% use public transport.