

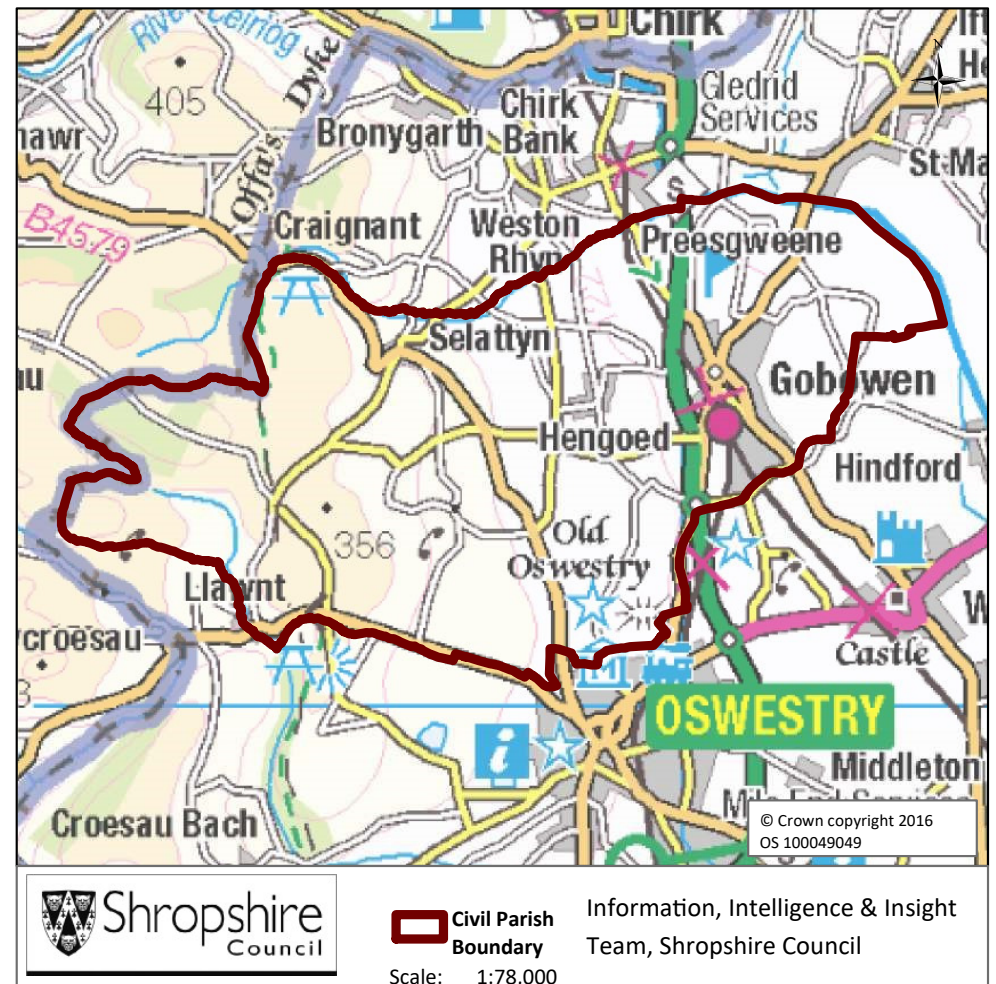
Selattyn & Gobowen Parish

Contents

Population	2
Health	4
Index of Multiple Deprivation	5
Housing	6
Unemployment and Labour Market	7

Key Facts:	Selattyn & Gobowen Parish
Area:	3190.5 hectares
Population Density:	1.30 persons per hectare
Total Population	4016 (1987 males, 2029 females)
Household Population:	3629 (90.4%)
Households:	1545
Dwellings:	1607
Communal Establishment no. / population	7 Communal Establishments 387 residents (9.6% of total population)

Source: 2011 Census, Office of National Statistics, © Crown Copyright 2018



Selattyn & Gobowen Parish

Population Age Structure

Table: Population by five year age group (2011 Census)

	Total Population	% of Total Population			
		Selattyn & Gobowen	Shropshire	West Midlands	England
All ages	4016	100.0	100.0	100.0	100.0
0 – 4	185	4.6	5.1	6.3	6.3
5 – 9	188	4.7	5.1	5.8	5.6
10 – 14	206	5.1	5.9	6.1	5.8
15 – 19	268	6.7	6.2	6.6	6.3
20 – 24	367	9.1	5.4	6.8	6.8
25 – 29	181	4.5	5.1	6.5	6.9
30 – 34	184	4.6	5.0	6.1	6.6
35 – 39	215	5.4	5.8	6.4	6.7
40 – 44	279	6.9	7.2	7.3	7.3
45 – 49	273	6.8	7.7	7.2	7.3
50 – 54	267	6.6	6.9	6.3	6.4
55 – 59	286	7.1	6.6	5.7	5.7
60 – 64	270	6.7	7.3	6.0	6.0
65 – 69	224	5.6	6.2	5.0	4.7
70 – 74	195	4.9	4.9	4.0	3.9
75 – 79	161	4.0	3.8	3.2	3.1
80 – 84	121	3.0	2.9	2.4	2.4
85 – 89	97	2.4	1.8	1.5	1.5
90 Plus	49	1.2	0.9	0.7	0.8

- Early years: 4.6% (185 children) of the population were aged 0 to 4 years in March 2011. This compares with 5.1% at County level, 6.3% regionally and 6.3% nationally.
- School age: 13.2% (529 children) of the population were aged 5 to 17 years in March 2011. This compares with 14.9% at County level, 15.8% regionally and 15.1% nationally.
- Working age: 61.1% (2455 people) of the population were aged 18 to 64 years in March 2011. This compares with 59.3% at County level, 61.0% regionally and 62.3% nationally.
- Retirement age: 21.1% (847 people) of the population were aged 65 and over in March 2011. This compares with 20.7% at County level, 16.9% regionally and 16.3% nationally.
- Over 85 year olds: 3.6% (146) of the population were aged 85 and over in March 2011. This compares with 2.7% at County level, 2.2% regionally and 2.2% nationally.

Source: 2011 Census, National Statistics.

Please note: Ward boundary changes in 2009 mean it is not possible to compare over time

Selattyn & Gobowen Parish

Diversity

- The 2011 Census showed Selattyn and Gobowen Parish had a black and minority ethnic group population of 75 (1.87%). The largest broad ethnic group is 'Asian' (within this the largest group is 'Indian'). For the first time the 2011 Census showed Selattyn and Gobowen Parish had a gypsy population of 3.
- When asked about their religion 31.6% (1268 people) identified themselves as having no religion or did not state it on the form. The majority of people (67.3%) identified themselves as Christian and 1.1% (45 people) identified themselves as having an alternative religion.
- The 2011 Census showed that 8 people could not speak English well and 0 people could not speak English at all.

Car Ownership

- The 2011 Census showed that 268 households (17.3%) did not own a car and subsequently are reliant on other forms of transport such as public transport services. In total 2236 cars are owned by households resident in the parish area.

Selattyn & Gobowen Parish

Health

General Health

The 2011 Census asked three questions relating to health and the provision of unpaid care. The questions relate to whether people felt their general health was good, whether they looked after or gave help or support to other family members, friends, neighbours or others and lastly whether their day to day activities were limited because of a health problem or disability.

- At the time of the 2011 Census 43% of people in Selattyn and Gobowen said that they felt they were in “Very Good Health”, this compares to 46% for Shropshire as a whole.
- 1.8% reported that they were in “Very Bad Health”. This is slightly higher than the overall result for Shropshire (1%).

Provision of Unpaid Care

The question asked “do you look after, or give any help or support to family members, friends, neighbours or others because of either; a long term physical or mental ill health/disability? or because of problems related to old age?”

- At the time of the Census 7.2% said that they were providing 1 to 19 hours of unpaid care a week. This is in line with the Shropshire figure of 7.5%.
- 1.5% said they provided between 20 and 49 hours of unpaid care. This is in line with the Shropshire figure of 1.3%.
- 2.4% said they provided over 50 hours of unpaid care. This is in line with the figure for Shropshire as a whole (2.4%) and the figure for England & Wales (2.4%).

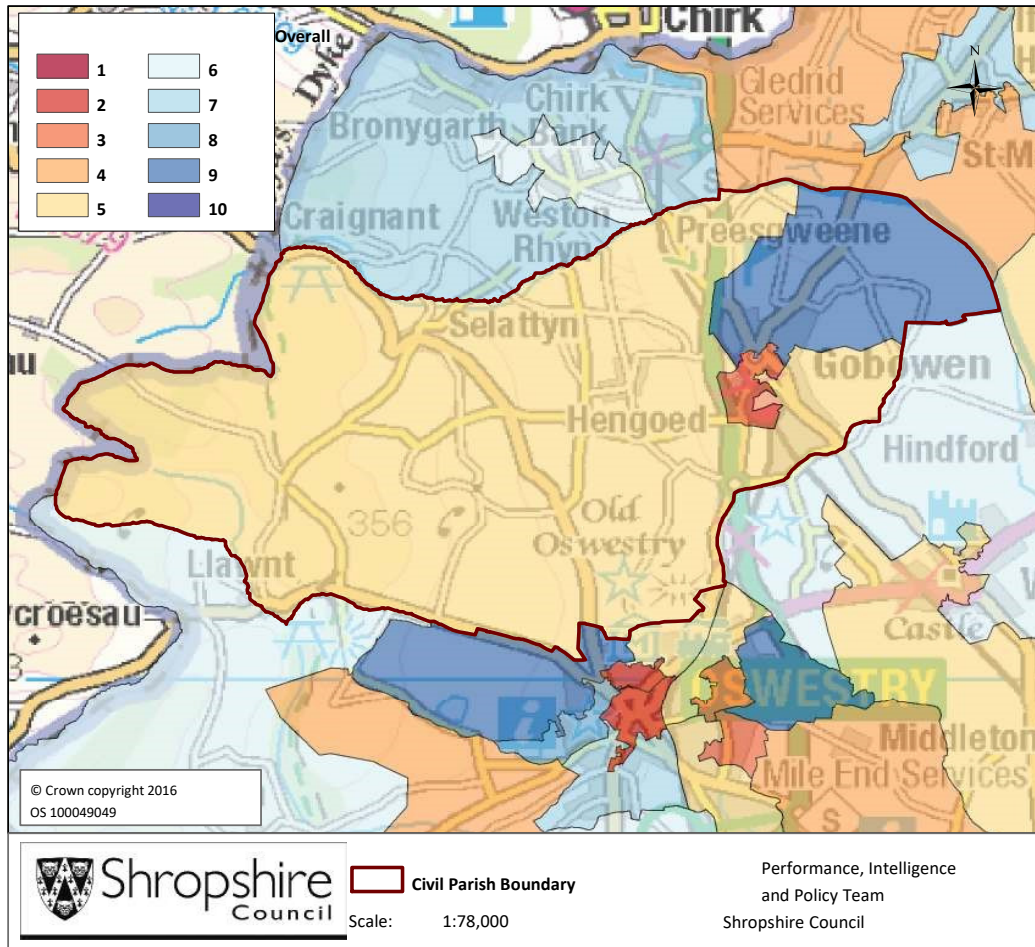
Long Term Illness or Disability

The Census asked “Are your day-to-day activities were limited a lot due to a health problem or disability which has lasted, or is expected to last, at least 12 months?”

- 14% said that their day-to-day activities were limited a lot due to a health problem or disability. This is higher than the figure for Shropshire as a whole and that of 9% for England and Wales.
- The percentage who reported their day-to-day activities were limited a little was 14%. This is slightly higher than the figure of 10% for Shropshire as a whole.

Selattyn & Gobowen Parish

Index of Multiple Deprivation



The lower super output area (LSOA) that covers Selattyn and Gobowen Parish falls within Decile 3, 5 and 9 nationally.

Decile 1 contains LSOAs that are ranked within the 10% most deprived in England.

Source: IMD 2015, Department for Communities and Local Government © Crown Copyright 2018

Selattyn & Gobowen Parish

Housing

- There were 1545 households in Selattyn and Gobowen at the time of the 2011 Census.
- The parish had 4016 usual residents and covers an area of 3191 hectares.
- 610 households were owner occupiers (owned outright) equating to 39.5% of all households. There were 498 households (32.2%) who owned their home with a mortgage or loan.
- There were 125 households (8.1% of all households) that privately rented their home from a landlord. There were also 13 households (0.8% of all households) who privately rented from a landlord classified as 'Other'.
- 206 households were renting social housing from the Council totalling 13.3% of all households. There were also 46 households (3.0%) renting social housing from 'Other' sources.
- In Selattyn and Gobowen there were 674 detached dwellings representing 41.9% of all dwellings. There were also 652 semi-detached and 183 terraced dwellings equating to 40.6% and 11.4% respectively.
- 15.7% of all households were one person pensioner households.
- 26.2% of households in the area had dependent children. The number of married couple households with dependent children was 231 and the number of cohabiting couples with dependent children was 66.
- There were 74 lone parent households (with dependent children), which equates to 4.8% of all households.

Selattyn & Gobowen Parish

Unemployment and Labour Market

Unemployment

- At the time of the Census, there were 112 residents who were unemployed but available for work. This is 3.8% of the 16-74 year old population, compared to 3.3% for Shropshire.
- 34 young people (aged 16-24) were unemployed, plus a further 26 who were 50 to 74.
- Long term unemployment is also an issue – 33.04% of all unemployed people were classed as long-term unemployed in 2011. This is the equivalent of 37 people.

Labour Force

- 1920 Selattyn and Gobowen residents aged 16-74 are economically active.
- 23.7% of the Selattyn and Gobowen population has level 4 or above qualifications compared with 27.5% in Shropshire and 27.4% in England.
- The number with no formal qualifications at all stands at 977 people – at 28.7% of the population (aged over 16), this compares with the county average of 22.5%.
- 36.1% of the population work in standard occupation classifications 1-3 (managers, directors and senior officials, professional, associate professional and technical) and 19.2% work in standard occupation classifications 8 and 9 (process, plant and machine operatives and elementary occupations).

Travel to Work (Census 2011)

- 10.1% of the population in Selattyn and Gobowen are self-employed, and 3.5% work from home compared with 5.6% for Shropshire.
- The car is used as the main means of travel to work for 48.0%, while 2.7% use public transport.