

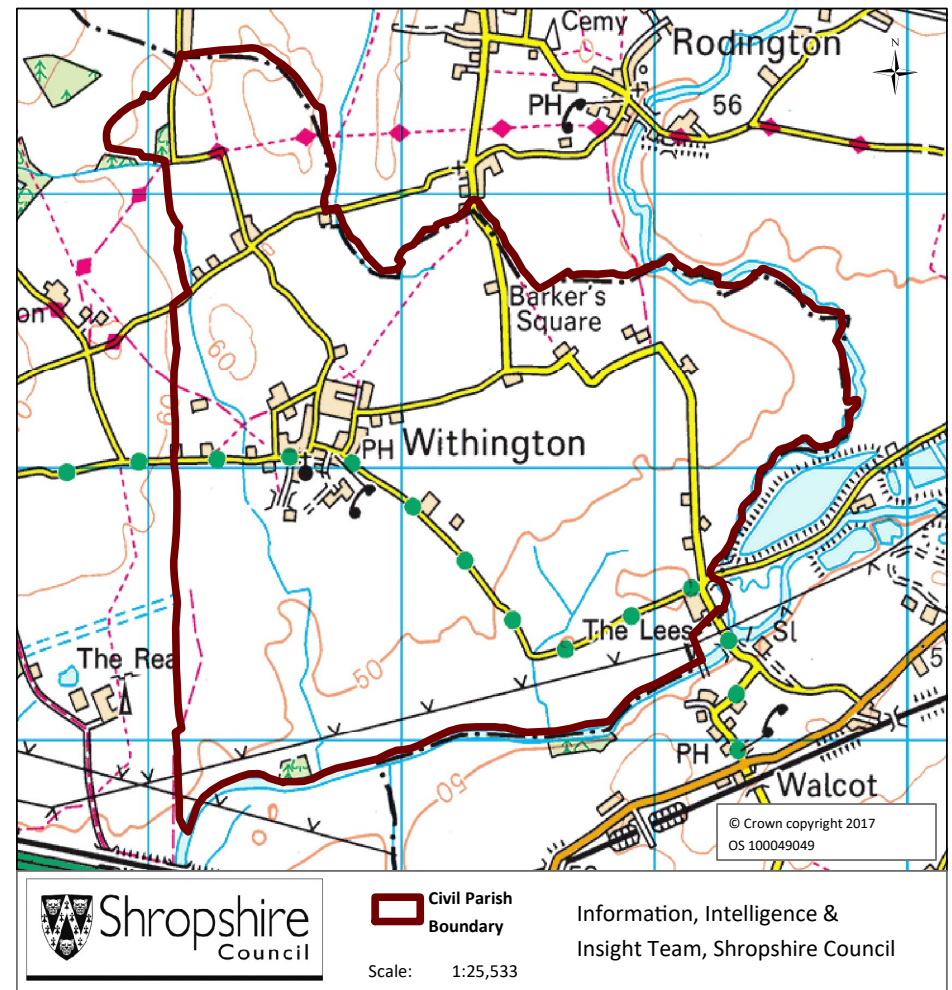
Withington Parish

Contents

Population	2
Health	4
Index of Multiple Deprivation	5
Housing	6
Unemployment and Labour Market	7

Key Facts:	Withington Parish
Area:	462.2 hectares
Population Density:	0.50 persons per hectare
Total Population	227 (115 males, 112 females)
Household Population:	227 (100.0%)
Households:	92
Dwellings:	97
Communal Establishment no.	0 Communal Establishments 0 residents (0.0% of total population)

Source: 2011 Census, Office of National Statistics



Withington Parish

Population Age Structure

Table: Population by five year age group (2011 Census)

	Total Population	% of Total Population			
		Withington	Shropshire	West Midlands	England
All ages	227	100.0	100.0	100.0	100.0
0 – 4	6	2.6	5.1	6.3	6.3
5 – 9	11	4.8	5.1	5.8	5.6
10 – 14	10	4.4	5.9	6.1	5.8
15 – 19	18	7.9	6.2	6.6	6.3
20 – 24	13	5.7	5.4	6.8	6.8
25 – 29	6	2.6	5.1	6.5	6.9
30 – 34	3	1.3	5.0	6.1	6.6
35 – 39	9	4.0	5.8	6.4	6.7
40 – 44	18	7.9	7.2	7.3	7.3
45 – 49	19	8.4	7.7	7.2	7.3
50 – 54	22	9.7	6.9	6.3	6.4
55 – 59	12	5.3	6.6	5.7	5.7
60 – 64	26	11.5	7.3	6.0	6.0
65 – 69	23	10.1	6.2	5.0	4.7
70 – 74	13	5.7	4.9	4.0	3.9
75 – 79	10	4.4	3.8	3.2	3.1
80 – 84	7	3.1	2.9	2.4	2.4
85 – 89	1	0.4	1.8	1.5	1.5
90 Plus	0	0.0	0.9	0.7	0.8

- Early years: 2.6% (6 children) of the population were aged 0 to 4 years in March 2011. This compares with 5.1% at County level, 6.3% regionally and 6.3% nationally.
- School age: 15.0% (34 children) of the population were aged 5 to 17 years in March 2011. This compares with 14.9% at County level, 15.8% regionally and 15.1% nationally.
- Working age: 58.6% (133 people) of the population were aged 18 to 64 years in March 2011. This compares with 59.3% at County level, 61.0% regionally and 62.3% nationally.
- Retirement age: 23.8% (54 people) of the population were aged 65 and over in March 2011. This compares with 20.7% at County level, 16.9% regionally and 16.3% nationally.
- Over 85 year olds: 0.4% (1) of the population were aged 85 and over in March 2011. This compares with 2.7% at County level, 2.2% regionally and 2.2% nationally.

Source: 2011 Census, National Statistics.

Please note: Ward boundary changes in 2009 mean it is not possible to compare over time

Withington Parish

Diversity

- The 2011 Census showed Withington Parish had a black and minority ethnic group population of 1 (0.44%). The largest broad ethnic group is 'Asian' (within this the largest group is 'Other Asian').
- When asked about their religion 33.0% (75 people) identified themselves as having no religion or did not state it on the form. The majority of people (66.5%) identified themselves as Christian and 0.4% (1 person) identified themselves as having an alternative religion.
- The 2011 Census showed that no one could not speak English well and no one could not speak English at all.

Car Ownership

- The 2011 Census showed that 1 household (1.1%) did not own a car and subsequently were reliant on other forms of transport such as public transport services. In total 201 cars are owned by households resident in the place plan area.

Withington Parish

Health

General Health

The 2011 Census asked three questions relating to health and the provision of unpaid care. The questions relate to whether people felt their general health was good, whether they looked after or gave help or support to other family members, friends, neighbours or others and lastly whether their day to day activities were limited because of a health problem or disability.

At the time of the 2011 Census 48% of people in Withington said that they felt they were in “Very Good Health”, this compares to 46% for Shropshire as a whole.

1.3% reported that they were in “Very Bad Health”. This is slightly higher than the overall result for Shropshire (1%).

Provision of Unpaid Care

The question asked “do you look after, or give any help or support to family members, friends, neighbours or others because of either; a long term physical or mental ill health/disability? Or because of problems related to old age?”

At the time of the Census 10% said that they were providing 1 to 19 hours of unpaid care a week. This is slightly higher than the Shropshire figure of 7%.

2% said they provided between 20 and 49 hours per unpaid care. This is slightly higher than the Shropshire figure of 1%.

3% said they provided over 50 hours of unpaid care. This is slightly higher than the figure for Shropshire as a whole (2%) and England & Wales (2%).

Long Term Illness or Disability

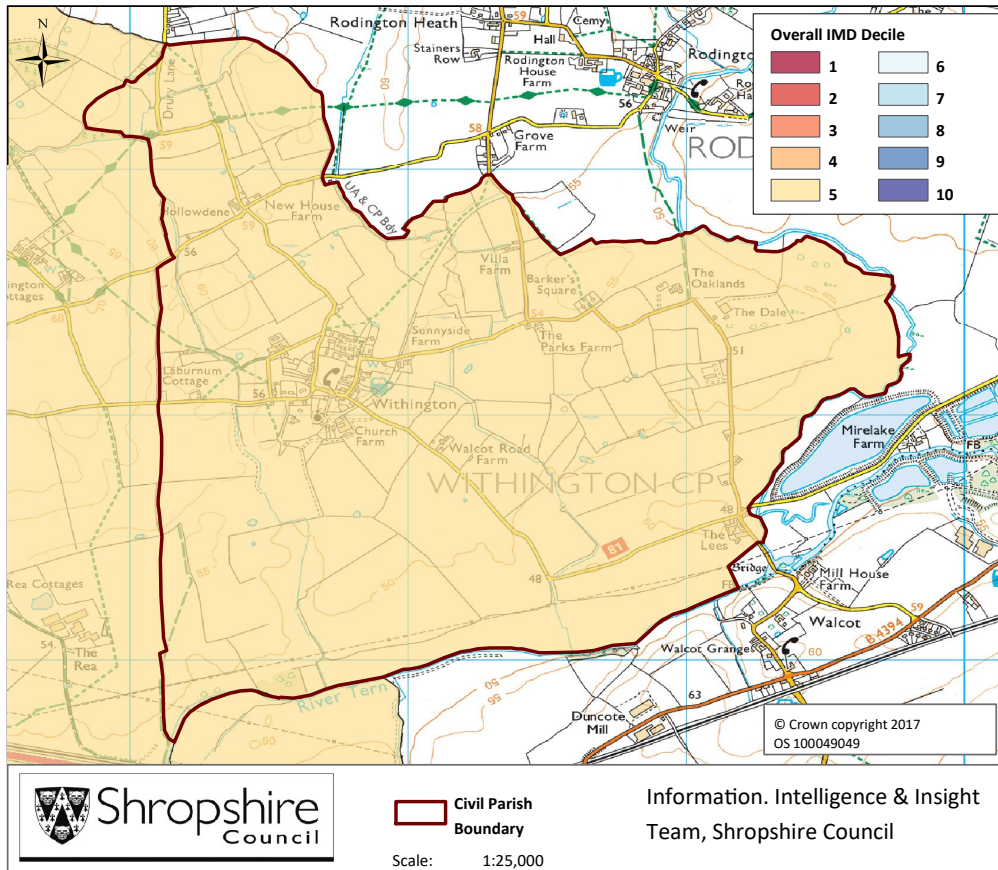
The Census asked “Are your day-to-day activities limited a lot due to a health problem or disability which has lasted, or is expected to last, at least 12 months?”

5% said that their day-to-day activities were limited a lot due to a health problem or disability. This is less than the County figure of 8%.

The percentage who reported their day-to-day activities were limited a little was 9%. This is less than the figure of 10% for Shropshire as a whole.

Withington Parish

Index of Multiple Deprivation



The lower super output area that covers Withington Parish falls within Quintile 5 nationally.

Quintile 1 is the most deprived nationally and Quintile 10 the least deprived nationally.

Source: IMD 2015, Department for Communities and Local Government © Crown Copyright 2017.

Withington Parish

Housing

- There were 92 households in Withington at the time of the 2011 Census.
- The parish had 227 usual residents and covers an area of 462 hectares.
- 53 households were owner occupiers (owned outright) equating to 57.6% of all households. There were 30 households (32.6%) who owned their home with a mortgage or loan.
- There were 6 households (6.5% of all households) that privately rented their home from a private landlord. There was also 1 household (1.1% of all households) who privately rented from a landlord classified as 'Other'.
- No households were recorded as renting social housing from the Council. There was also 1 household (1.1%) recorded as renting social housing from 'Other' sources.
- In Withington there were 72 detached dwellings representing 74.2% of all dwellings. There were also 22 semi-detached and 2 terraced dwellings equating to 22.7% and 2.1% respectively.
- 12.0% of all households were one person pensioner households.
- 27.2% of households in the area had dependent children. The number of married couple households with dependent children was 13 and the number of cohabiting couples with dependent children was 6.
- There were 3 lone parent households (with dependent children), which equates to 3.3% of all households.

Withington Parish

Unemployment and Labour Market

Unemployment

- At the time of the Census, there was one resident who was unemployed but available for work. This is 0.6% of the 16-74 year old population, compared to 3.3% for Shropshire.
- One young person (aged 16-24) was recorded as unemployed and no one was recorded as unemployed aged 50 to 74 years.
- Long term unemployment was not an issue – 0.0% of all unemployed people were classed as long-term unemployed in 2011.

Labour Force

- 124 Withington residents aged 16-74 are economically active.
- 39.3% of the Withington population had level 4 or above qualifications compared with 27.5% in Shropshire and 27.4% in England.
- The number with no formal qualifications at all stands at 24 people – at 12.2% of the population (aged over 16), this compares with the county average of 22.5%.
- 45.5% of the population work in standard occupation classifications 1-3 (managers, directors and senior officials, professional, associate professional and technical) and 10.6% work in standard occupation classifications 8 and 9 (process, plant and machine operatives and elementary occupations).

Travel to Work (Census 2011)

- 17.4% of the population in Withington are self-employed, and 5.1% work from home compared with 5.6% for Shropshire.
- The car is used as the main means of travel to work for 57.3%, while 0.6% use public transport.