

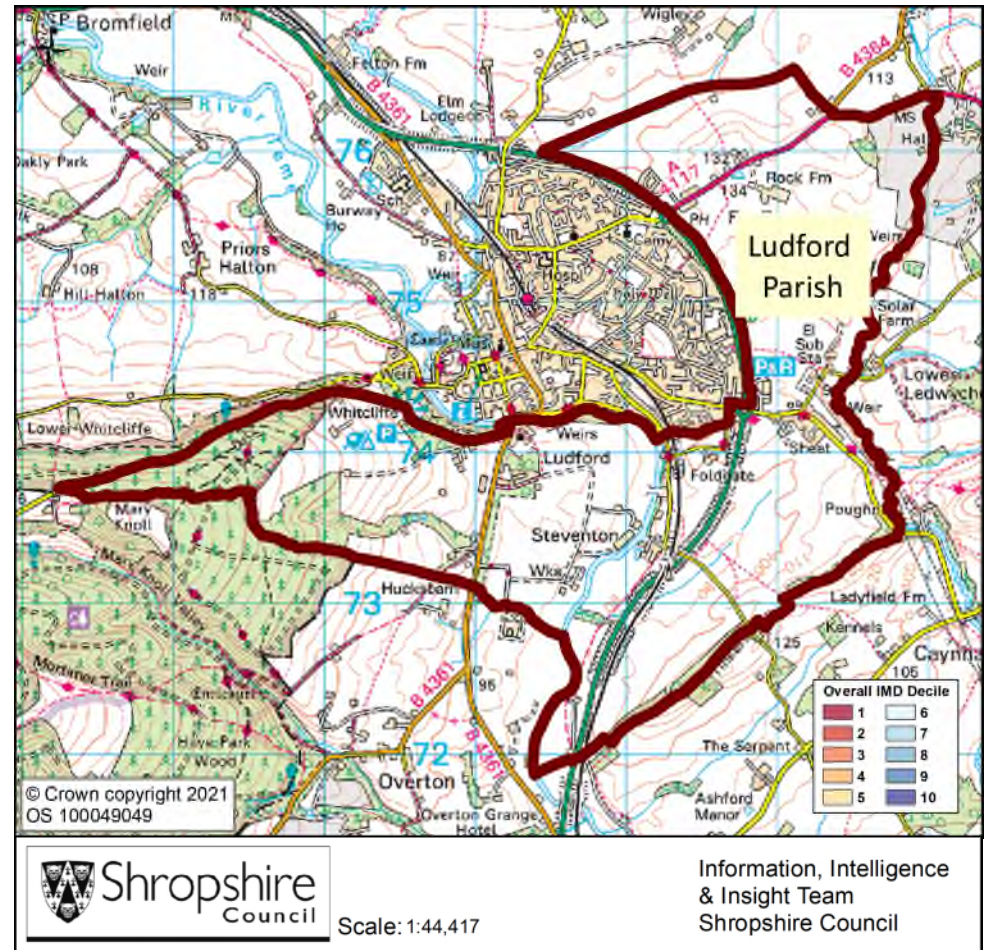
Ludford Parish

Contents

Population	2
Health	4
Index of Multiple Deprivation	5
Housing	6
Unemployment and Labour Market	7

Key Facts:	Ludford Parish
Area:	875.4 hectares
Population Density:	0.80 persons per hectare
Total Population	673 (348 males, 325 females)
Household Population:	673 (100.0%)
Households:	285
Dwellings:	303
Communal Establishment no. / population	2 Communal Establishments

Source: 2011 Census, Office of National Statistics, © Crown Copyright 2021



Ludford Parish

Population Age Structure

Table: Population by five year age group (2011 Census)

	Total Population	% of Total Population			
		Ludford	Shropshire	West Midlands	England
All ages	673	100.0	100.0	100.0	100.0
0 – 4	49	7.3	5.1	6.3	6.3
5 – 9	46	6.8	5.1	5.8	5.6
10 – 14	35	5.2	5.9	6.1	5.8
15 – 19	37	5.5	6.2	6.6	6.3
20 – 24	51	7.6	5.4	6.8	6.8
25 – 29	44	6.5	5.1	6.5	6.9
30 – 34	41	6.1	5.0	6.1	6.6
35 – 39	26	3.9	5.8	6.4	6.7
40 – 44	39	5.8	7.2	7.3	7.3
45 – 49	38	5.6	7.7	7.2	7.3
50 – 54	49	7.3	6.9	6.3	6.4
55 – 59	28	4.2	6.6	5.7	5.7
60 – 64	33	4.9	7.3	6.0	6.0
65 – 69	46	6.8	6.2	5.0	4.7
70 – 74	43	6.4	4.9	4.0	3.9
75 – 79	31	4.6	3.8	3.2	3.1
80 – 84	24	3.6	2.9	2.4	2.4
85 – 89	11	1.6	1.8	1.5	1.5
90 Plus	2	0.3	0.9	0.7	0.8

- Early years: 7.3% (49 children) of the population were aged 0 to 4 years in March 2011. This compares with 5.1% at County level, 6.3% regionally and 6.3% nationally.
- School age: 15.6% (105 children) of the population were aged 5 to 17 years in March 2011. This compares with 14.9% at County level, 15.8% regionally and 15.1% nationally.
- Working age: 53.8% (362 people) of the population were aged 18 to 64 years in March 2011. This compares with 59.3% at County level, 61.0% regionally and 62.3% nationally.
- Retirement age: 23.3% (157 people) of the population were aged 65 and over in March 2011. This compares with 20.7% at County level, 16.9% regionally and 16.3% nationally.
- Over 85 year olds: 1.9% (13) of the population were aged 85 and over in March 2011. This compares with 2.7% at County level, 2.2% regionally and 2.2% nationally.

Source: 2011 Census, National Statistics.

Please note: Ward boundary changes in 2009 mean it is not possible to compare over time

Ludford Parish

Diversity

- The 2011 Census showed Ludford Parish had a black and minority ethnic group population of 3 (0.45%). The largest broad ethnic group is 'Mixed' (within this the largest group is 'White and Black Caribbean'). The 2011 Census showed Ludford Parish had a gypsy population of 0.
- When asked about their religion 33.1% (223 people) identified themselves as having no religion or did not state it on the form. The majority of people (66.3%) identified themselves as Christian and 0.6% (4 people) identified themselves as having an alternative religion.
- The 2011 Census showed that 1 person could not speak English at all.

Car Ownership

- The 2011 Census showed that 35 households (12.3%) did not own a car and subsequently are reliant on other forms of transport such as public transport services. In total 374 cars are owned by households resident in the place plan area.

Ludford Parish

Health

General Health

The 2011 Census asked three questions relating to health and the provision of unpaid care. The questions relate to whether people felt their general health was good, whether they looked after or gave help or support to other family members, friends, neighbours or others and lastly whether their day to day activities were limited because of a health problem or disability.

At the time of the 2011 Census 50% of people in Ludford said that they felt they were in “Very Good Health”, this compares to 46% for Shropshire as a whole.

1.0% reported that they were in “Very Bad Health”. This is in line with the overall result for Shropshire (1%).

Provision of Unpaid Care

The question asked “do you look after, or give any help or support to family members, friends, neighbours or others because of either; a long term physical or mental ill health/disability? Or because of problems related to old age?”

At the time of the Census 7% said that they were providing 1 to 19 hours of unpaid care a week. This is in line with the Shropshire figure of 7%

2% said they provided between 20 and 49 hours per unpaid care. This is slightly higher than the Shropshire figure of 1%.

2% said they provided over 50 hours of unpaid care. This is in line with the figure for Shropshire as a whole (2%) and the figure for England & Wales (2%).

Long Term Illness or Disability

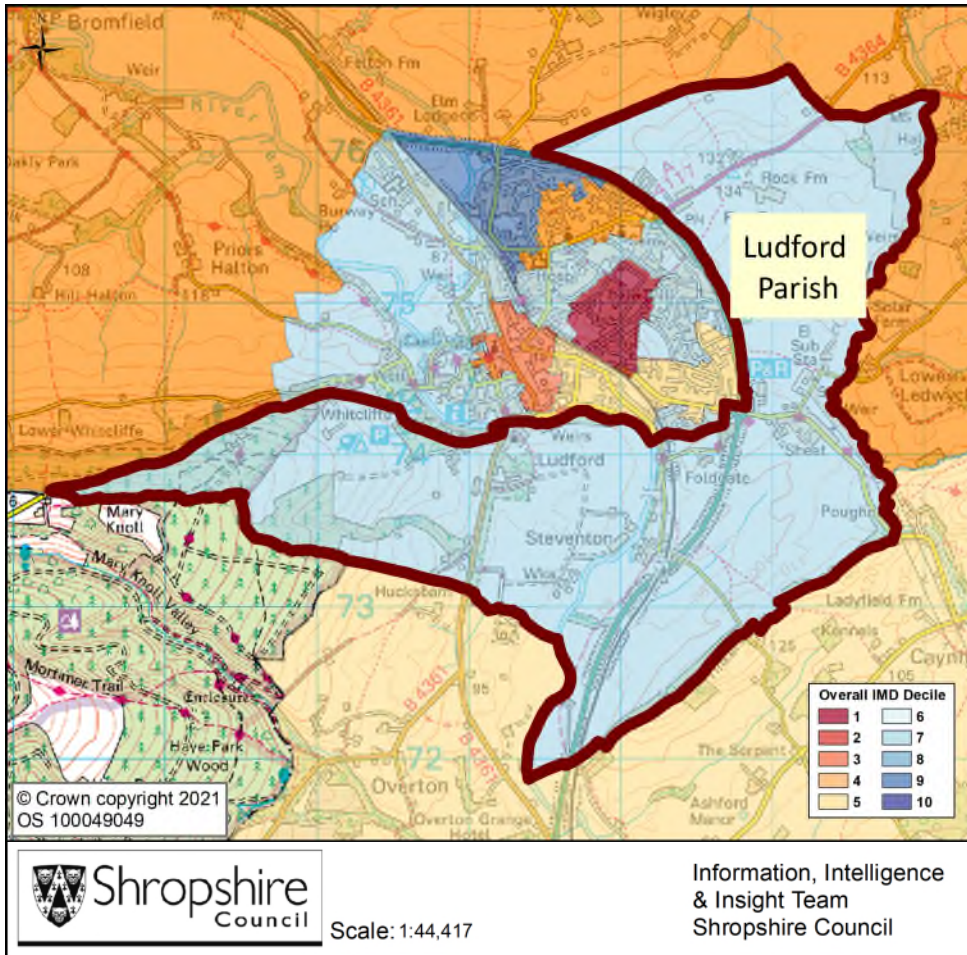
The Census asked “Are your day-to-day activities limited a lot due to a health problem or disability which has lasted, or is expected to last, at least 12 months?”

6% said that their day-to-day activities were limited a lot due to a health problem or disability. This is less than the County figure of 8%.

The percentage who reported their day-to-day activities were limited a little was 12%. This is slightly higher than the figure of 10% for Shropshire as a whole

Ludford Parish

Index of Multiple Deprivation



The lower super output area that covers Ludford Parish falls within decile 7 nationally.

Decile 1 is the most deprived nationally and Decile 10 the least deprived nationally.

Source: IMD 2019, Department for Communities and Local Government © Crown Copyright 2021.

Housing

- There were 285 households in Ludford at the time of the 2011 Census.
- The 2011 Census showed 106 households owned their home outright equating to 37.2% of all households. There were 51 households (17.9%) who owned their home with a mortgage or loan.
- There were 24 households (8.4% of all households) that privately rented their home from a landlord. There were also 4 households (1.4% of all households) who privately rented from a landlord classified as 'Other' such as employer.
- 2 households were renting social housing from the Council totalling 0.7% of all households. There were also 67 households (23.5%) renting social housing from 'Other' sources including registered social landlords such as Shropshire Housing Group.
- In Ludford there were 139 detached dwellings representing 45.9% of all dwellings. There were also 83 semi-detached and 50 terraced dwellings equating to 27.4% and 16.5% respectively.
- 8.4% (24) of all households were one person pensioner households.
- 28.5% of households in the area had dependent children. The number of married couple households with dependent children was 35 and the number of cohabiting couples with dependent children was 21.
- There were 19 lone parent households (with dependent children), which equates to 6.7% of all households.

Unemployment and Labour Market

Unemployment

- At the time of the Census, there were 22 residents who were unemployed but available for work. This is 4.7% of the 16-74 year old population, compared to 3.3% for Shropshire.
- 11 young people (aged 16-24) were unemployed, plus a further 2 who were 50 to 74.
- Long term unemployment is an issue – 36.36% of all unemployed people were classed as long-term unemployed in 2011. This is the equivalent of 8 people.

Labour Force

- 324 Ludford residents aged 16-74 are economically active.
- 26.4% of the Ludford population has level 4 or above qualifications compared with 27.5% in Shropshire and 27.4% in England.
- The number with no formal qualifications at all stands at 99 people – at 18.5% of the population (aged over 16), this compares with the county average of 22.5%.
- 30.1% of the population work in standard occupation classifications 1-3 (managers, directors and senior officials, professional, associate professional and technical) and 21.2% work in standard occupation classifications 8 and 9 (process, plant and machine operatives and elementary occupations).

Travel to Work (Census 2011)

- 13.3% of the population in Ludford are self-employed, and 6.6% work from home compared with 5.6% for Shropshire.
- The car is used as the main means of travel to work for 43.7%, while 1.1% use public transport.