



SHROPSHIRE HEALTH AND WELLBEING BOARD Report

Meeting Date	14 th July 2022			
Title of Paper	ICS Update			
Reporting Officer and email	Simon Whitehouse – CEO ICB simon.whitehouse@nhs.net			
Which Joint Health & Wellbeing Strategy priorities does this paper address? Please tick all that apply	Children & Young People		Joined up working	x
	Mental Health		Improving Population Health	x
	Healthy Weight & Physical Activity		Working with and building strong and vibrant communities	
	Workforce	x	Reduce inequalities (see below)	
What inequalities does this paper address?				
<p>Paper content - Please expand content under these headings or attach your report ensuring the three headings are included.</p> <p>1. Executive Summary</p> <p style="padding-left: 40px;">Update on the progress regarding ICS creation and governance arrangements for Shropshire, Telford and Wrekin</p> <p>2. Recommendations</p> <p style="padding-left: 40px;">The board is asked</p> <ul style="list-style-type: none"> • to note the detail contained in the report • to comment on how HWBB members see the ICP and the HWBB working in partnership • to support the approach for a strong 'placed based' approach to integration <p>3. Report</p> <p>Please see attached paper.</p>				
Risk assessment and opportunities appraisal (NB This will include the following: Risk Management, Human Rights, Equalities, Community, Environmental consequences and other Consultation)	None identified			

Financial implications (Any financial implications of note)	None identified	
Climate Change Appraisal as applicable	None identified	
Where else has the paper been presented?	System Partnership Boards	
	Voluntary Sector	
	Other	
List of Background Papers (This MUST be completed for all reports, but does not include items containing exempt or confidential information) Attached paper		
Cabinet Member (Portfolio Holder) or your organisational lead e.g. Exec lead or Non-Exec/Clinical Lead (List of Council Portfolio holders can be found at this link: https://shropshire.gov.uk/committee-services/mgCommitteeDetails.aspx?ID=130) Simon Whitehouse – CEO ICB		
Appendices None		

SHROPSHIRE HEALTH AND WELLBEING BOARD

Report Meeting Date: 14 July 2022

Paper title: ICS update

1. Summary

Update on the progress regarding ICS creation and governance arrangements for Shropshire, Telford and Wrekin

2. Recommendations

The board is asked

- to note the detail contained in the report
- to comment on how HWBB members see the ICP and the HWBB working in partnership
- to support the approach for a strong 'placed based' approach to integration

3. Report

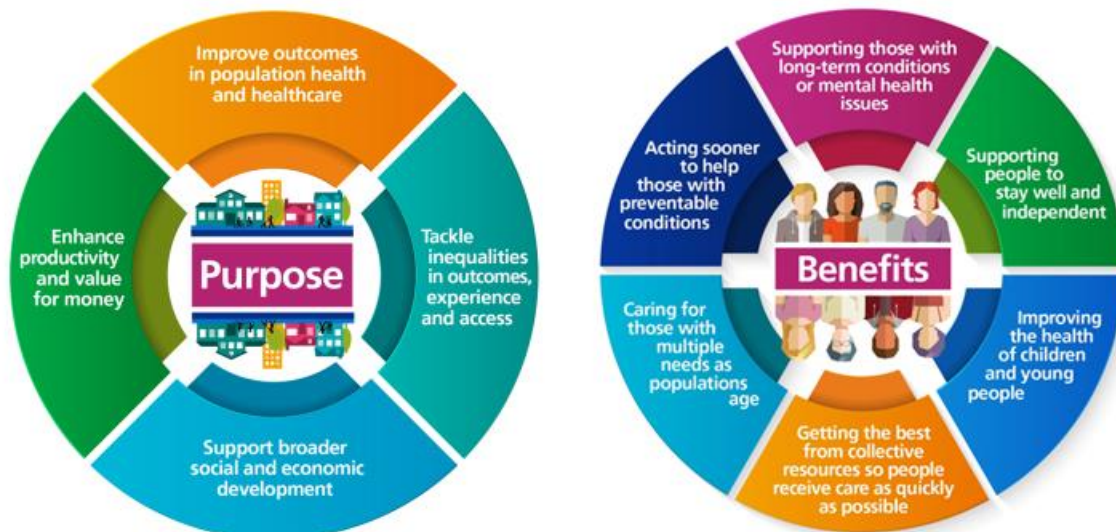
3.1 Context

This report is an update to the summary of the Integrated Care System (ICS) development programme in Shropshire, Telford and Wrekin presented at the last meeting of this board.

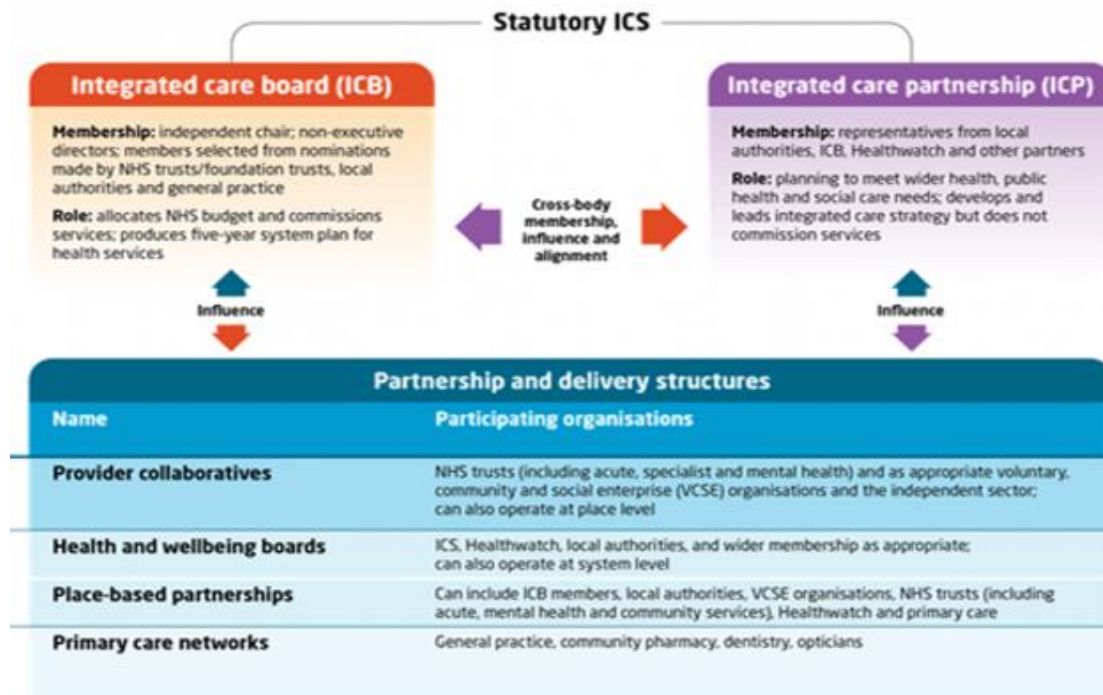
This paper is intended to provide an update on the most recent milestone of the ICS' journey to the establishment timeline of 1 July 2022, progress made on the establishment of statutory functions of the ICS, including the creation of the Integrated Care Partnership, and further steps to establishing infrastructure and service delivery in the future.

Integrated Care Systems

Partnerships of organisations that come together to plan and deliver joined up health and care services to improve the lives of people in their area.



What will the new system look like?



3.2 Progress and Assurance

On 1 July 2022 the Shropshire, Telford and Wrekin Integrated Care Board was established as a new statutory organisation. During the journey to reach this milestone assurance had to be provided at specific points. Details and key milestones had been set out in the NHSEI establishment timeline and systems were asked to share evidence of progress against the Readiness to Operate Statement (ROS) checklist on 31 March 2022 and 20 May 2022. STW ICS successfully submitted the checklist together with a detailed System Development plan (SDP) and other relevant evidence at both stages.

The date of final checkpoint submission of the ROS was 10 June 2022 where, in addition to the ROS checklist and supporting evidence, a signed Readiness to Operate Statement was required. In the statement the Chief Executive of the ICS and the NHSE Regional Director confirmed that adequate preparations had been made for the legal establishment of Shropshire, Telford and Wrekin Integrated Care Board.

By 1 July 2022 the ICS constitution had been brought into effect by NHSE and the inaugural meeting of the Shropshire, Telford and Wrekin Board, where core business transactions, required for the legal establishment of the ICB, took place.

3.3 Principles for and Expectations of Integrated Care Partnerships

STW ICS is now implementing the principles and expectations, set out in the guidance developed by the Department of Health and Social Care, NHS England and NHS Improvement and the Local Government Association (LGA)

Core Requirements for ICSs:

- Each ICS is required to have a statutory **Integrated Care Partnership (ICP)** – details of the partnership arrangements are being finalised through the ICP Terms of Reference which are due to be signed off in the first meeting of the ICP in September 2022 and the Integrated Care Board in July.
- The ICP must have a minimum, lawfully required membership – membership is being finalised between ICP partners.
- Once established the ICP must produce an **integrated care strategy** for their area - the ICP will ensure that an Integrated Care Strategy is developed. It will be focused on local needs at a place and neighbourhood level, informed by the Health and Wellbeing Strategies created by the two Health and Wellbeing Boards of Shropshire and Telford & Wrekin and by Joint Strategic Needs Assessments (JSNAs). An interim strategy is due for publication in December 2022.

Expectations of Integrated Care Partnerships (ICPs)s:

- ICPs are a core part of ICSs, driving their direction and priorities
- ICPs will be rooted in the needs of people, communities, and places
- ICPs create a space to develop and oversee population health strategies to improve health outcomes and experiences
- ICPs will support integrated approaches and subsidiarity
- ICPs should take an open and inclusive approach to strategy development and leadership, involving communities and partners to utilise local data and insights.

Discussions around how STW ICP will operate at a system level to meet these expectations have progressed and a proposed model has been presented to the Region.

The ICP will work in partnership with the two Health and Wellbeing Boards and both Place-Based Partnerships (Shropshire Integrated Place Partnership (ShIPP,) and Telford & Wrekin Integrated Place Partnership (TWIPP) while complementing their work. Ways of collaborating in order to maximise the value of each group will be further developed. There will be a need to ensure clear mechanisms are in place to enable subsidiarity of decision making and that decisions are taken once at the most appropriate local level.

ICPs will play a crucial role within the system to bring together partners and look beyond traditional organisational boundaries to address population health, health inequalities and the wider determinants of health. This is the most important aspect of the ICS in terms of the difference that this can make for local people.

An ICP Steering group, comprised of members from the local authorities and the STW NHS Trust have been meeting over recent months to work towards meeting these requirements. TORs, governance and decision-making structures of the ICP have been drawn up.

Draft Terms and Conditions for the ICP board, including proposed membership and guiding principles have been drawn up and are up and are due to be presented to the ICB Board at the end of July.

Establishment of the ICS

The following deliverables are required for the establishment of ICS's

- **Appointment of ICB Board members** – The board members for Shropshire, Telford and Wrekin ICS have been appointed and the first meeting of the fully established ICB board took place on 1 July 2022.
- An **ICB constitution** – the STW constitution, setting out key governing principles has been approved and published by NHSE/I [21-nhs-shropshire-telford-and-wrekin-icb-constitution-010722.pdf \(england.nhs.uk\)](#)
- A **draft functions and decision map** – a detailed chart has been designed and submitted to NHSE/I.
- **Quality and safety systems and functions** are taking effect from 1 July 2022, including implementation of System Quality Groups in line with the National Quality Board's guidance.

Other Partnership Arrangements within the ICS

Future provider partnership arrangements, including provider collaboratives, primary care networks and other collaborative arrangements are at progressed draft stage.

STW already has a very strong track record of clinical, professional and back-office collaboration both within and outside of the ICS, and one of the local providers (SaTH) provides a shared procurement service to three NHS organisations. As evidenced by the Hospital Transformation Programme, the System Sustainability Programme and People Plan, STW has worked together collaboratively and successfully to take a system view on estates, capital allocations, and workforce planning over recent months and years.

Engagement of and communication with ICS partners:

Ongoing work to enable cultural change involving system partners will be undertaken; this will involve embedding clinical leadership within the system.

Engagement with and involvement of local people and communities is a key pre-requisite for the success of the ICS, therefore

- meeting minutes and papers will be available online
- local Healthwatch organisations will be involved
- people and communities of every system will be involved in the development of ICPs and the integrated care strategy
- people, staff and communities will be able to input into the planning and delivery of services and how services are going to be joined up
- TWIPP and SHIPP are developing their own priorities, reflecting the different needs of each local population
- Healthwatch and VCSE partners will have a critical role to play in supporting ICPs to stay rooted in the needs of people, communities, and places; the alliance with VCSE partners has been formalised in an MOU;

Resourcing

Investment in ICSs will improve partnerships and enable a better response to local needs, which will, in time, lead to a more efficient and sustainable system.

- The ICB, together with the two local authorities as members of the board, will agree funding.
- Work to agree how funding allocations and payment mechanisms apply to non-NHS partners, the appropriateness of the ICS financial risk and governance and standardised financial reporting and controls is ongoing.

3. Conclusion

The Board is asked

- **to note** the detail contained in the report
- **to comment** on how HWBB members see the ICP and the HWBB working in partnership
- **to support** the approach for a strong 'placed based' approach to integration.