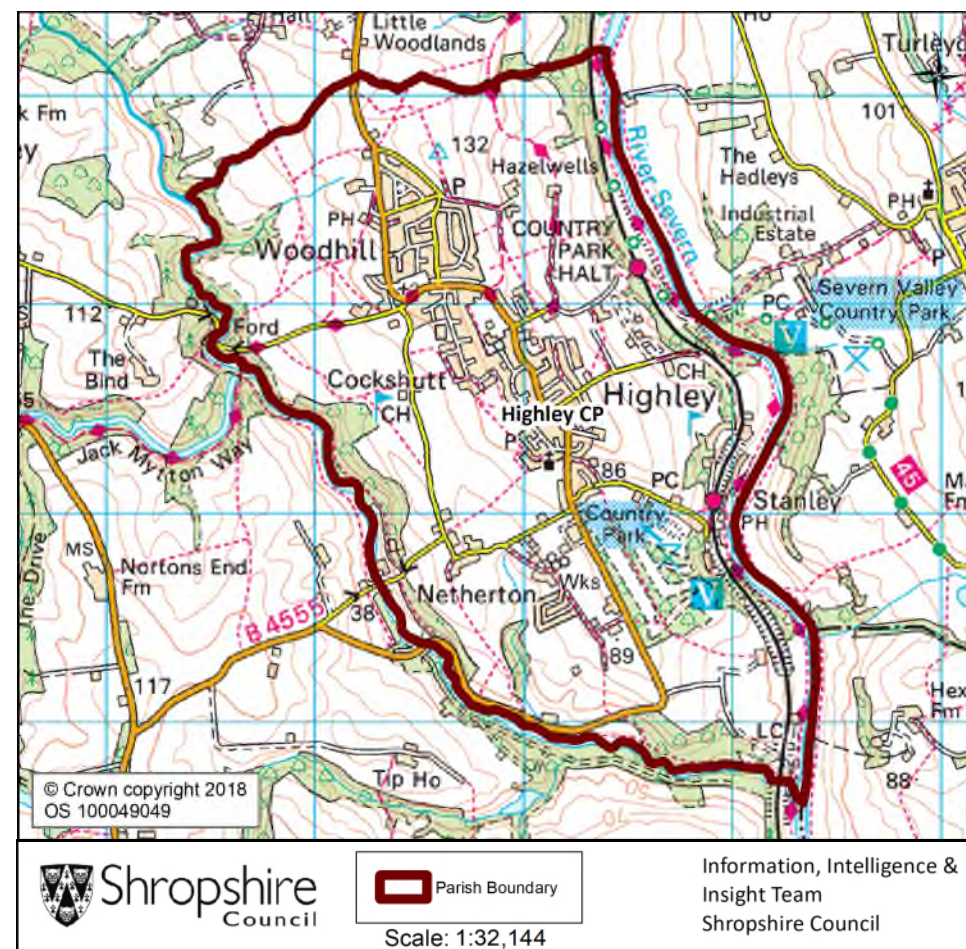


# Highley Parish

## Contents

Population	2
Health	4
Index of Multiple Deprivation	5
Housing	6
Unemployment and Labour Market	7

Key Facts:	Highley Parish
Area:	637.6 hectares
Population Density:	5.70 persons per hectare
Total Population	3605 (1766 males, 1839 females)
Household Population:	3605 (100.0%)
Households:	1583
Dwellings:	1653
Communal Establishment no. / population	0 Communal Establishments 0 residents (0.0% of total population)



Source: 2011 Census, Office of National Statistics © Crown Copyright 2018

# Highley Parish

## Population Age Structure

Table: Population by five year age group (2011 Census)

	Total Population	% of Total Population			
		Highley	Shropshire	West Midlands	England
<b>All ages</b>	3605	100.0	100.0	100.0	100.0
<b>0 – 4</b>	190	5.3	5.1	6.3	6.3
<b>5 – 9</b>	187	5.2	5.1	5.8	5.6
<b>10 – 14</b>	211	5.9	5.9	6.1	5.8
<b>15 – 19</b>	211	5.9	6.2	6.6	6.3
<b>20 – 24</b>	190	5.3	5.4	6.8	6.8
<b>25 – 29</b>	183	5.1	5.1	6.5	6.9
<b>30 – 34</b>	155	4.3	5.0	6.1	6.6
<b>35 – 39</b>	181	5.0	5.8	6.4	6.7
<b>40 – 44</b>	263	7.3	7.2	7.3	7.3
<b>45 – 49</b>	265	7.4	7.7	7.2	7.3
<b>50 – 54</b>	241	6.7	6.9	6.3	6.4
<b>55 – 59</b>	249	6.9	6.6	5.7	5.7
<b>60 – 64</b>	287	8.0	7.3	6.0	6.0
<b>65 – 69</b>	285	7.9	6.2	5.0	4.7
<b>70 – 74</b>	214	5.9	4.9	4.0	3.9
<b>75 – 79</b>	139	3.9	3.8	3.2	3.1
<b>80 – 84</b>	81	2.2	2.9	2.4	2.4
<b>85 – 89</b>	54	1.5	1.8	1.5	1.5
<b>90 Plus</b>	19	0.5	0.9	0.7	0.8

- Early years: 5.3% (190 children) of the population were aged 0 to 4 years in March 2011. This compares with 5.1% at County level, 6.3% regionally and 6.3% nationally.
- School age: 15.5% (558 children) of the population were aged 5 to 17 years in March 2011. This compares with 14.9% at County level, 15.8% regionally and 15.1% nationally.
- Working age: 57.3% (2065 people) of the population were aged 18 to 64 years in March 2011. This compares with 59.3% at County level, 61.0% regionally and 62.3% nationally.
- Retirement age: 22.0% (792 people) of the population were aged 65 and over in March 2011. This compares with 20.7% at County level, 16.9% regionally and 16.3% nationally.
- Over 85 year olds: 2.0% (73) of the population were aged 85 and over in March 2011. This compares with 2.7% at County level, 2.2% regionally and 2.2% nationally.

Source: 2011 Census, Office of National Statistics © Crown Copyright 2018

# Highley Parish

## Diversity

- The 2011 Census showed Highley Parish had a black and minority ethnic group population of 47 (1.30%). The largest broad ethnic group is 'Asian' (within this the largest group is 'Indian'). For the first time the 2011 Census showed Highley Parish had a gypsy population of 2.
- When asked about their religion 30.3% (1092 people) identified themselves as having no religion or did not state it on the form. The majority of people (68.6%) identified themselves as Christian and 1.1% (39 people) identified themselves as having an alternative religion.
- The 2011 Census showed that 3 people could not speak English well and 0 people could not speak English at all.

## Car Ownership

- The 2011 Census showed that 266 households (16.8%) did not own a car and subsequently are reliant on other forms of transport such as public transport services. In total 2148 cars are owned by households resident in the parish area.

*Source: 2011 Census, Office of National Statistics © Crown Copyright 2018*

# Highley Parish

## Health

Source: 2011 Census, Office of National Statistics © Crown Copyright 2018

### General Health

The 2011 Census asked three questions relating to health and the provision of unpaid care. The questions relate to whether people felt their general health was good, whether they looked after or gave help or support to other family members, friends, neighbours or others and lastly whether their day to day activities were limited because of a health problem or disability.

- At the time of the 2011 Census 41% of people in Highley said that they felt they were in “Very Good Health”, this compares to 46% for Shropshire as a whole.
- 1.3% reported that they were in “Very Bad Health”. This is slightly higher than the overall result for Shropshire (1%).

### Provision of Unpaid Care

The question asked “do you look after, or give any help or support to family members, friends, neighbours or others because of either; a long term physical or mental ill health/disability? or because of problems related to old age?”

- At the time of the Census 7% said that they were providing 1 to 19 hours of unpaid care a week. This is in line with the Shropshire figure of 7%
- 2% said they provided between 20 and 49 hours per week unpaid care. This is slightly higher than the Shropshire figure of 1%.
- 4% said they provided over 50 hours of unpaid care. This is slightly higher than the figure for Shropshire as a whole (2%) and England & Wales (2%).

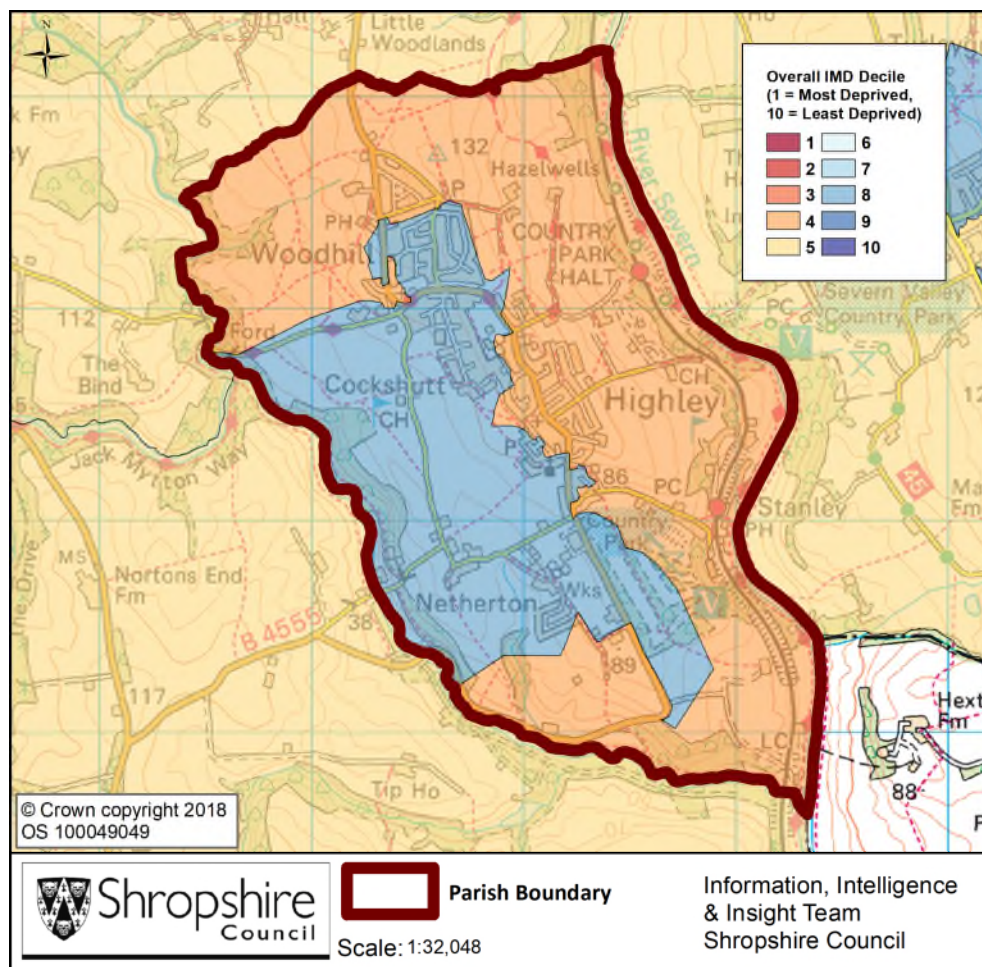
### Long Term Illness or Disability

The Census asked “Are your day-to-day activities limited a lot due to a health problem or disability which has lasted, or is expected to last, at least 12 months?”

- 10% said that their day-to-day activities limited a lot due to a health problem or disability. This is higher than the figure for Shropshire as a whole and that of 9% for England and Wales.
- The percentage who reported their day-to-day activities were limited a little was 11%. This is slightly higher than the figure of 10% for Shropshire as a whole.

# Highley Parish

## Index of Multiple Deprivation



The lower super output areas that cover Highley Parish fall within Deciles 4 & 8 nationally.

Decile 1 is the most deprived nationally and Decile 10 the least deprived nationally.

Source: IMD 2015, Department for Communities and Local Government, © Crown Copyright 2018.

# Highley Parish

## Housing

- There were 1583 households in Highley at the time of the 2011 Census.
- The parish had 3605 usual residents and covers an area of 638 hectares.
- 626 households were owner occupiers (owned outright) equating to 39.5% of all households. There were 470 households (29.7%) who owned their home with a mortgage or loan.
- There were 192 households (12.1% of all households) that privately rented their home from a landlord. There were also 17 households (1.1% of all households) who privately rented from a landlord classified as 'Other'.
- 200 households were renting social housing from the Council totalling 12.6% of all households. There were also 42 households (2.7%) renting social housing from 'Other' sources.
- In Highley there were 544 detached dwellings representing 32.9% of all dwellings. There were also 513 semi-detached and 436 terraced dwellings equating to 31.0% and 26.4% respectively.
- 13.6% of all households were one person pensioner households.
- 27.5% of households in the area had dependent children. The number of married couple households with dependent children was 226 and the number of cohabiting couples with dependent children was 77.
- There were 107 lone parent households (with dependent children), which equates to 6.8% of all households.

*Source: 2011 Census, Office of National Statistics © Crown Copyright 2018*

# Highley Parish

## Unemployment and Labour Market

### Unemployment

- At the time of the Census, there were 114 residents who were unemployed but available for work. This is 4.3% of the 16-74 year old population, compared to 3.3% for Shropshire.
- 35 young people (aged 16-24) were unemployed, plus a further 24 who were 50 to 74.
- Long term unemployment is also an issue – 44.74% of all unemployed people were classed as long-term unemployed in 2011. This is the equivalent of 51 people.

### Labour Force

- 1747 Highley residents aged 16-74 are economically active.
- 18.4% of the Highley population has level 4 or above qualifications compared with 27.5% in Shropshire and 27.4% in England.
- The number with no formal qualifications at all stands at 916 people – at 31.0% of the population (aged over 16), this compares with the county average of 22.5%.
- 30.6% of the population work in standard occupation classifications 1-3 (managers, directors and senior officials, professional, associate professional and technical) and 24.1% work in standard occupation classifications 8 and 9 (process, plant and machine operatives and elementary occupations).

### Travel to Work (Census 2011)

- 11.0% of the population in Highley are self-employed, and 2.8% work from home compared with 5.6% for Shropshire.
- The car is used as the main means of travel to work for 49.7%, while 2.1% use public transport.

*Source: 2011 Census, Office of National Statistics © Crown Copyright 2018*