

SHROPSHIRE FOCUS ON SEND

Issue 7 Spring 2019

News, Views and Information from the SEN Team

Welcome, to our Spring edition of Shropshire's Focus on SEND newsletter where you will find information and updates on SEND leaflets, Specialist Public Health SEND Team, personal budgets, supported internships, Bee-U Service Beam drop ins, Young Addaction, ELSA training, key dates for your diary and much more!

The SEN Team
Telephone: 01743 254267
Email: senteam@shropshire.gov.uk



Making best use of teaching assistants

Teaching assistants can be an amazing resource in schools and can have a really positive impact on the learners within our settings. It is important that we support and deploy these staff effectively to maximise the impact they have within schools. The guidance report, 'Making the Best Use of Teaching Assistants' produced by the Education Endowment Foundation, provides some useful information for SENCo's and school leaders to reflect on the practice which takes in your school. A copy of the guidance can be downloaded for free at:

www.educationendowmentfoundation.org.uk



Jonathan Sharples, who led this research for EEF, said: "The way in which teaching assistants are currently used in schools is generally having very little impact on student outcomes. They possibly even have a negative impact on student outcomes."

Ten per cent of the education budget – or £4 billion – is currently being spent on teaching assistants.

Dr Sharples argues that using teaching assistants correctly can make the difference between money well-spent and money wasted. "I've been working in this area for 10 years now, and I've never seen such a consistent and positive effect," he said. "There's a clear opportunity to do something better."

Local Offer Shropshire: A single place for services and information relating to SEND.

Local Offer: <http://shropshire.gov.uk/local-offer/>

Like us on Facebook: <https://www.facebook.com/sclocaloffer/>

Follow us on Twitter: <https://twitter.com/LocalOfferShrop>

SHROPSHIRE FOCUS ON SEND

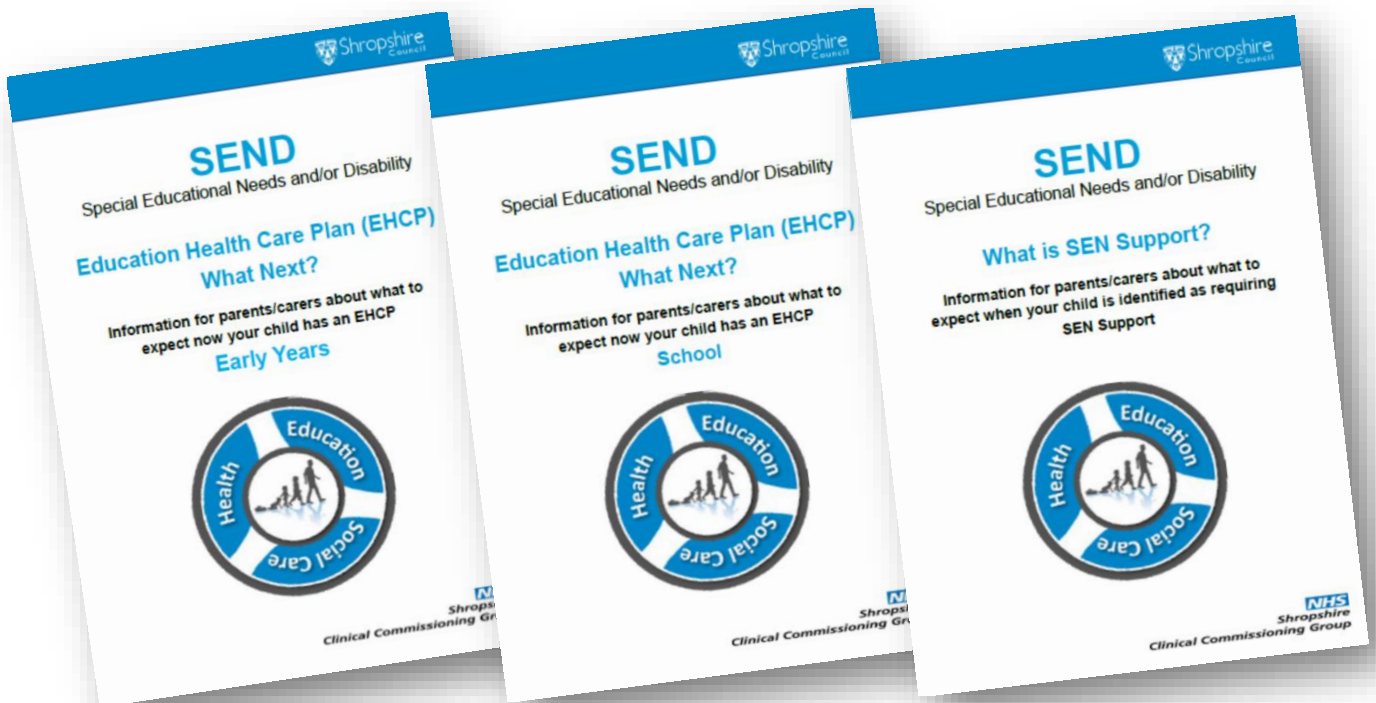
Issue 7 Spring 2019

News, Views and Information from the SEN Team

SEN Team have launched three new information leaflets

- **What is SEN Support**
Information for parents/carers about what to expect when your child is identified as requiring SEN support.
- **Education Health and Care Plan – What Next? Early Years / School age**
Information for parents/carers explaining what happens next and what to expect after your child has been issued with an Education Health and Care Plan.

All leaflets can be found on the Local Offer.



Interested in becoming a SENCO?

Shrewsbury University Centre deliver the National Award for Special Educational Needs Co-ordination (NASENCo) in partnership with Shropshire Council. Details regarding the course can be found on the 'Flyer' on the next page. For further information contact Jo Cowan or attend the Post Graduate Study, Open Evening on Thursday 6th June from 17.00 to 19.30 at the University Centre, Guildhall, Shrewsbury.

Local Offer Shropshire: A single place for services and information relating to SEND.

Local Offer: <http://shropshire.gov.uk/local-offer/>

Like us on Facebook: <https://www.facebook.com/sclocaloffer/>

Follow us on Twitter: <https://twitter.com/LocalOfferShrop>

Shropshire Council is working in partnership with University Centre Shrewsbury and the University of Chester to deliver the **National Award for Special Educational Needs Coordination (NASENCo)** qualification throughout Shropshire from September 2019.

This course fulfils the training requirements of the Special Educational Needs Code of Practice (2015) which envisages that a SENCo will provide leadership and professional guidance to colleagues and will work closely with staff, parents and carers, etc. It challenges SENCos to promote person-centred, inclusive practice in which the interests and needs of pupils and young people with SEN and/or disabilities are at the heart of everything that they do.

The course will be delivered at University Centre Shrewsbury, in a high quality professional teaching environment, situated in the heart of Shrewsbury and easily accessible to all from across Shropshire.

Specialist staff complemented by an extensive range of up-to-date learning resources will deliver practical sessions designed to have positive impact on the practice within the school.

Sessions are structured to promote best practice and ensure that all requirements of the Award are achieved.

The programme is assessed through practical assignments that develop positive practice and knowledge of how to apply SEN strategies in school and covers the following 3 modules:

- Professional Knowledge and Understanding
- Leading and Managing Provision
- Developing a Positive Ethos and Culture

Delivery dates will be over 6 Weekend Schools per year, run twice-termly. These consist of a Friday twilight session plus a full day on the Saturday and will run on the following dates:

	Friday (Twilight: 5pm-7pm)	Saturday (9.30am-4pm)
Term 1	Friday 25th October 2019	Saturday 26th October 2019
	Friday 13th December 2019	Saturday 14th December 2019
Term 2	Friday 31st January 2020	Saturday 1st February 2020
	Friday 20th March 2020	Saturday 21st March 2020
Term 3	Friday 15th May 2020	Saturday 16th May 2020
	Friday 26th June 2020	Saturday 27th June 2020

2019/2020 Course Fee: £1,695.00

Please see our website for details of our Open Days: www.chester.ac.uk

For SENCo's, new to the role, it is mandatory (in England) to achieve the Award within three years of appointment.



On successful completion, participants will be awarded the National Award for Special Educational Needs Coordination (NASENCo).



SHROPSHIRE FOCUS ON SEND

Issue 7 Spring 2019

News, Views and Information from the SEN Team

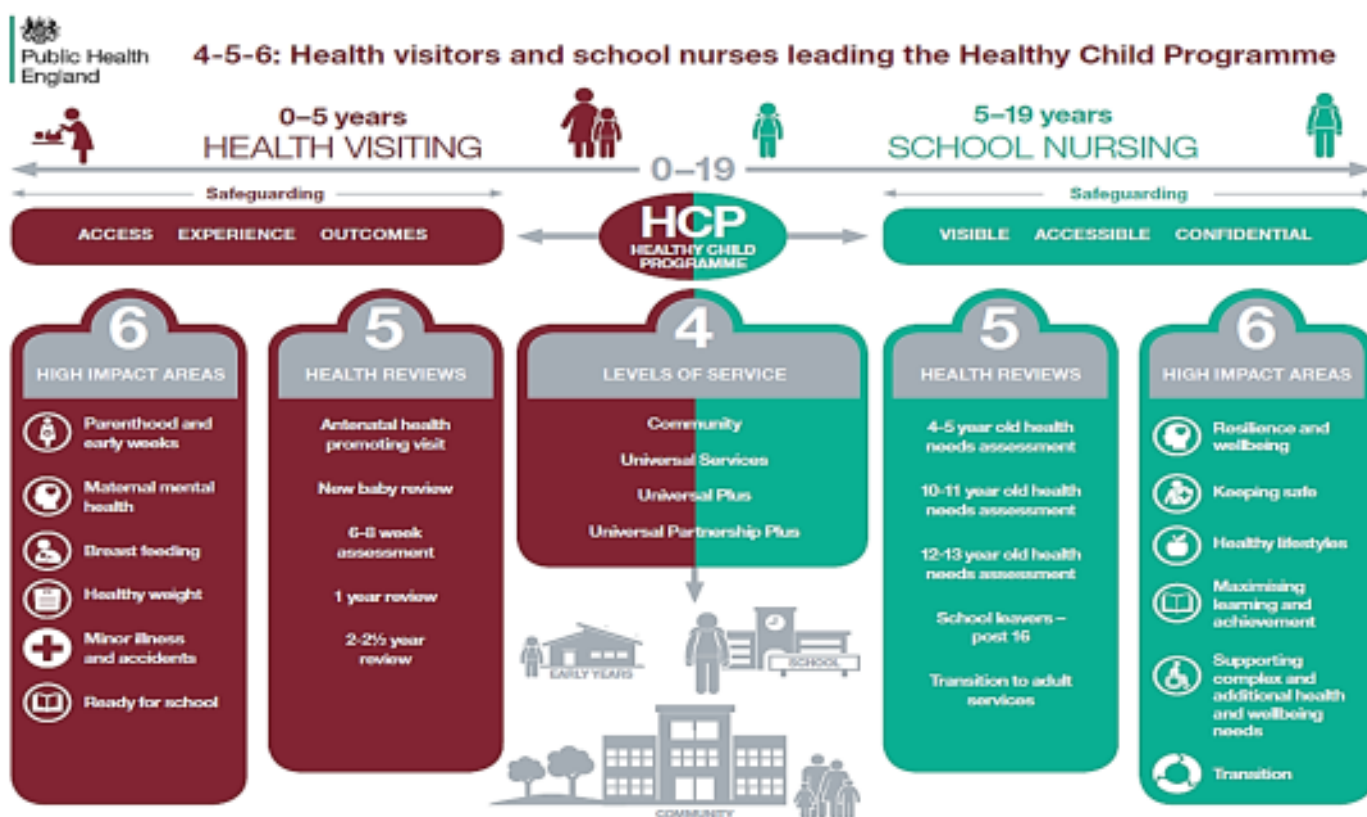
Specialist Public Health SEND Team



Healthy You, Healthy Future

The recent establishment of the Specialist Public Health SEND Team aims to promote joined up approaches across Health, Education and Social Care for children and young people with SEND from 0-25 years.

The focus is very much on early identification and intervention and the establishment of more efficient ways of working to ensure better outcomes for children, young people (CYP) and their families. The aim of the team is to ensure that every CYP with SEND in Shropshire is offered the chance to access health services to maximise their potential in achieving the best they can in life, in line with the healthy child programme and the 4-5-6 model.



The team are able to provide targeted pieces of work to facilitate early identification and intervention. These include, for example; sleep, behaviour, parenting, continence, fussy eating and play. They will also sign-post towards other services and aim to improve links with GP's to facilitate better health input for EHCP's.

Referrals are accepted from health and education practitioners or self-referrals from parents/carers and young people for CYP with an EHCP or undertaking assessment. More details can be found on Sharepoint (under 'SEND') or on the Local Offer.

Clare Bevan (Specialist Public Health Nurse SEND Lead) **Alison Birch** (Healthy Child Practitioner)

Contact: Tel: (01691) 663690 Email: shropcom.sphnsendteam@nhs.net

Local Offer Shropshire: A single place for services and information relating to SEND.

Local Offer: <http://shropshire.gov.uk/local-offer/>

Like us on Facebook: <https://www.facebook.com/sclocaloffer/>

Follow us on Twitter: <https://twitter.com/LocalOfferShrop>

SHROPSHIRE FOCUS ON SEND

Issue 7 Spring 2019

News, Views and Information from the SEN Team

Shropshire Local Offer

The Local Offer [Facebook](#) and [Twitter](#) pages were relaunched in September 2018 and they are being monitored and updated daily with news and local events from SEND. We now have over 300 Facebook followers! 😊

Follow us on Twitter: <https://twitter.com/LocalOfferShrop>

Like us on Facebook: <https://www.facebook.com/sclocaloffer/>



[Shropshire's local offer](#) helps those with special educational needs or disabilities to find accurate and appropriate information so that they can make positive decisions about their lives. You can also find local support services [using our directory](#). Local activities and events can be found in the directory [here](#).

You can provide feedback about the Shropshire Local Offer by emailing local.offer@shropshire.gov.uk

A blue banner for the Shropshire Local Offer. On the left, there are several circular images showing children: one with hands, one with a child writing, one with a child playing, and one with a child swimming. In the center, the text reads 'Shropshire Local Offer' and 'The SEND local offer is a single place for information, services, and resources for children and young people aged 0-25 with special educational needs and / or disabilities, their families, and the practitioners who support them'. Below this is the website 'www.shropshire.gov.uk/local-offer' and social media handles for Twitter and Facebook. On the right, there is the Shropshire Council logo and a circular logo for the Local Offer with 'Health', 'Education', and 'Social Care' written around it.

Shropshire Local Offer

The SEND local offer is a single place for information, services, and resources for children and young people aged 0-25 with special educational needs and / or disabilities, their families, and the practitioners who support them

www.shropshire.gov.uk/local-offer

[/LocalOfferShrop](#) [/sclocaloffer](#)

Shropshire Council

SHROPSHIRE LOCAL OFFER

Health Education Social Care

Enable's Supported Internship Event

The SEND Team were delighted to attend [Enable's](#) Supported Internship event at Shrewsbury Town Football Club on the 20th March. It was lovely to celebrate all of the young people's achievements & to collect a certificate in recognition of our intern, Josh, who has been growing in confidence 😊

#SupportedInternship #SupportedEmployment



Local Offer Shropshire: A single place for services and information relating to SEND.

Local Offer: <http://shropshire.gov.uk/local-offer/>

Like us on Facebook: <https://www.facebook.com/sclocaloffer/>

Follow us on Twitter: <https://twitter.com/LocalOfferShrop>

Case Study – Josh Carpenter



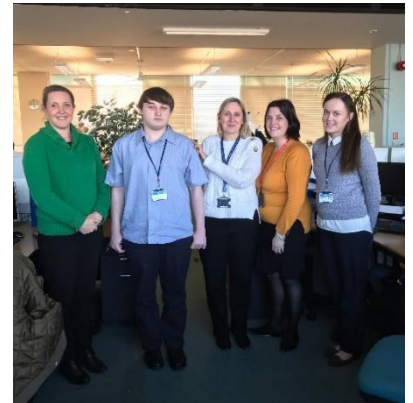
Josh began his Supported Internship placement within the Special Educational Needs (SEN) Team based at Shirehall in January 2019. Josh also attends the Gateway Education Centre where he is supported by County Training to achieve the educational element of the Supported Internship. Brendan, his Employment Officer liaised with the team's manager, Julie to ensure Josh would feel comfortable when he started. Josh had a visit prior to starting and this helped to reduce his first day nerves.

Josh has been supported in this role in the SEN team by his Job Coach, Charlotte and he has been growing in confidence with every week that he works in this supportive team.

Josh works on various administrative tasks and has been contributing well as part of the team under the guidance of Julie Farebrother. His tasks include working on the holiday and flexi cards, which provide a vital overview of the leave for the whole team. Josh has also been typing up the minutes of SEN team meetings and is also working on the transcription of documents onto the team data base.

Josh has his own work tray which helps him to manage his day and prioritise his work. Josh's confidence continues to grow; he has been feeling more independent and is happy to communicate with his colleagues.

Josh hopes to build on this fantastic start in the team and would like to enhance his skills set and continue to increase his confidence by taking on some new tasks. Josh is also going to travel independently to work and to eventually progress to an inclusive apprenticeship.



Enable Supported Internship Feedback Survey

Last year we sent out a questionnaire to gauge young people's understanding and awareness of supported internships and progression routes for young people with SEND. Enable were commissioned to promote supported internships and other preparation for employment opportunities to Shropshire young people with SEND and during the year Enable have been promoting supported internships and raising awareness of employment opportunities. A Focus Group made up of young people with SEND has been contributing to supporting this project and have been involved in careers confident events, helping produce case studies and giving input into changes to the Shropshire Local Offer. They have also been involved in producing this feedback survey.

We would like as many young people with EHCPs to complete this end of project feedback to see if more young people have a better understanding of opportunities available, particularly Supported Internships and employment progression routes. **Please could you support/encourage all of your Shropshire resident learners who have an EHCP from Year 9 upwards to complete the feedback survey which can be accessed via the link below.**

<https://www.surveymonkey.co.uk/r/SupportedInternshipFeedback>

Local Offer Shropshire: A single place for services and information relating to SEND.

Local Offer: <http://shropshire.gov.uk/local-offer/>

Like us on Facebook: <https://www.facebook.com/sclocaloffer/>

Follow us on Twitter: <https://twitter.com/LocalOfferShrop>

Client Success Story: Michael Supported Internships & Independent Travel Training

Michael has now been at Carmar Tea Room for six months and is making excellent progress. His manager, owner of the business and Head Chef, Mark, said that Michael has a natural talent. He is able to cook liver and bacon, a Carmar Tea Room speciality dish on his own. This involves dry frying the liver and knowing exactly when to take the liver off the heat and exactly when to add water to prevent it drying out. This is something that is difficult to learn and Michael has shown that he has a



natural ability for this. He also has a delicate touch which is needed for making biscuits.

Mark says that Michael has a great sense of humour and joins in with the banter in the kitchen. He has developed a good rapport with the team. He reads the orders, sets up the ingredients and lets Mark know he has done this. He has shown that he can be relied upon to get on with orders with minimal supervision.

Michael also helped recently with making the Celebration Cakes for the Supported Internship Event at Shrewsbury Town Football Club, held by Enable. The cakes proved to be a great hit.

and enjoyed being with Hazel. It's been amazing to see the progress he's made. Thank you to everyone involved.”



Michael also completed his Independent Travel Training through Enable in January 2019 where he received his certificate.

Michael said:



“Hazel has helped me a lot with travel training and has made me more confident to travel independently on college bus to Shrewsbury college and I can also use the public bus to travel from Shawbury into Shrewsbury.”

Michael’s mother said: “Michael gained so much confidence doing his travel training

SHROPSHIRE FOCUS ON SEND

Issue 7 Spring 2019

News, Views and Information from the SEN Team

SEND Personal Budget Update

A SEND Personal Budget (SEND PB) is a way of funding very specific, tailor-made provision for children and young people (0-25) with disabilities and/or Special Educational Needs. Families, councils and health commissioners can offer this for support not already commissioned.

SEND PBs can be used to buy health, education and/or social care support.

In Shropshire, SEND PBs have been around for a few years. The implementation group monitors their take up and use. The group can see that numbers are steadily increasing.

The take up of SEND PBs has steadily increased in the last few years. In October 2018, we counted 541 SEND PBs in total. 438 of those were for 18-25 year olds. The majority purchased social care support.

Setting up a SEND PB is governed by a SEND PB policy and a Resource Indication Policy. Both can be found on the Local Offer website. Families who wish to find out more are advised to speak to the person who carries out a needs assessment in the first instance.

Marion Versluijs, Chair of SEND PB implementation group

<http://shropshire.gov.uk/the-send-local-offer/practitioners/education-health-and-care-plans/personal-budgets/>

Young Addaction Shropshire

Young Addaction Shropshire provides a service to young people in Shropshire aged between 10 and 18. They can help young people to get healthy by making better lifestyle choices and support them towards their own goals. The service is free, confidential and non-judgmental and works with young people whatever their substance issues, including alcohol.

They work out of Fletcher House, in the community, in schools, colleges and other young person friendly settings striving to help young people to reach their full potential.



<https://www.addaction.org.uk/services/young-addaction-shropshire>

Local Offer Shropshire: A single place for services and information relating to SEND.

Local Offer: <http://shropshire.gov.uk/local-offer/>

Like us on Facebook: <https://www.facebook.com/sclocaloffer/>

Follow us on Twitter: <https://twitter.com/LocalOfferShrop>

SHROPSHIRE FOCUS ON SEND

Issue 7 Spring 2019

News, Views and Information from the SEN Team

BeeU Service – BEAM Drop Ins

Really pleased to announce that the BEAM Drop-In sessions are now also taking place in Ludlow!






Venue: Ludlow Youth Centre, Ludlow, SY8 1RT

When: 1st and 3rd Wednesday of each month

Open times: 3.30pm – 7pm

It can be scary going somewhere for the first time: our drop-ins are set out to be as welcoming as possible. A team member will greet you and ask you to register before a practitioner will introduce themselves, and then take the time to listen before making suggestions.

service provided by  No child should feel alone  proud to be part of  Emotional Health and Wellbeing

BEAM DROP-INS ARE HELD:


Mondays & Tuesdays	9 Market Square, Wellington, Telford TF1 1BP	Open: 12pm Close: 7pm
Thursdays	Upstairs at Palmer's Café, Claremont Street, Shrewsbury SY1 1QG	Open: 2pm Close: 7pm
Saturdays	9 Market Square, Wellington, Telford TF1 1BP	Open: 11am Close: 4pm

OPENING ON 6TH FEB 2019—BEAM IN LUDLOW!
Ludlow Youth Centre, Ludlow SY8 1RT
FIRST and THIRD Wednesday of each month Open: 3.30pm Close: 7pm


Ask us about...




BEAM WORKSHOPS therapeutic group support relating to a range of common mental health and emotional wellbeing topics such as anger and anxiety as well as expressing emotions using creative writing, arts & crafts and mindfulness.
Ask for details of our current workshop calendar!

GRAVITY—THE BEAM YOUTH PARTICIPATION GROUP gives young people the chance to be involved with shaping the Beam service.

 Shropshire Telford and Wrekin

emotional wellbeing drop-in for children and young people under the age of 25, their parents and Carers



service provided by  No child should feel alone  proud to be part of  Emotional Health and Wellbeing

AskBeam@childrenssociety.org.uk

Local Offer Shropshire: A single place for services and information relating to SEND.

Local Offer: <http://shropshire.gov.uk/local-offer/>

Like us on Facebook: <https://www.facebook.com/sclocaloffer/>

Follow us on Twitter: <https://twitter.com/LocalOfferShrop>

Emotional Literacy Support Assistant (ELSA) Training

The Educational Psychology Service will be offering training to develop an Emotional Literacy Support Assistant (ELSA) within your school. Please see attached leaflet.

This is an excellent opportunity for schools to build their capacity and confidence in meeting the needs of children and young people with social, emotional and mental health (SEMH) difficulties, as encouraged in the 2017 Green Paper on 'Transforming Young People's Mental Health Provision'.

- Emotional Literacy Support Assistant (ELSA) training is 5 days of training for Teaching Assistants (TAs) in psychological theory and intervention by qualified psychologists to enable TAs to plan and deliver individual and small group support programmes in schools to children and young people (4-16 year olds) with social, emotional and mental health needs.
- Once trained and receiving ongoing supervision from a psychologist, ELSAs can help young people with a range of social and emotional needs such as: self-esteem and confidence building, social skills, emotional literacy, friendship issues, anger management, behaviour, anxiety, low mood, loss and bereavement, bullying/conflict and relaxation techniques.
- The training is planning to start in the second half of the spring term (around end of February/beginning of March 2019). The 5 days of training will be spread out so that TAs will need to be out of school for 1 day per week for 5 weeks. After this, TAs will then be supported with regular half-termly group supervision by an educational psychologist for 2 hours to ensure their work is effective and competent. They will also be given an ELSA handbook and given membership to the online ELSA network full of resources and support.
- The 5 days ELSA training and 2 supervision sessions until the end of the year costs £600 which schools can purchase using their EPS package (it uses roughly 2 – 2½ sessions depending on your school's package). Yearly supervision thereafter, 6 times a year, necessary to maintain accredited as an ELSA is £250 (roughly 1 session from your school's package). This is excellent value for money that results in having a person in school who can run effective SEMH interventions supported by a qualified psychologist.

Places are limited so please contact the Educational Psychology Service (Office E-mail:

eps@shropshire.gov.uk Office Tel: 01743 258414) if you wish to book a place or if you have any questions.



Local Offer Shropshire: A single place for services and information relating to SEND.

Local Offer: <http://shropshire.gov.uk/local-offer/>

Like us on Facebook: <https://www.facebook.com/sclocaloffer/>

Follow us on Twitter: <https://twitter.com/LocalOfferShrop>

Emotional Literacy Support Assistants (ELSA) Training

What is an ELSA?

- An ELSA is a teaching assistant who has received training in psychological theory and intervention by qualified psychologists to enable them to plan and deliver individual and small group support programmes in schools to children and young people (4-16 year olds) with social, emotional and mental health needs.
- ELSAs are trained and regularly supervised by Educational Psychologists.
- ELSA training enables schools to have a 'go-to' person in school for providing mental health provision, working towards the Government agenda set out in the 2017 Green Paper on 'Transforming Young People's Mental Health Provision'.
- ELSA training can reduce the need to refer for specialist support.



What does the training involve?

- *Initial training:* ELSAs will be provided with five full days of training which cover the following topics: building self-esteem, managing emotions including anger and anxiety, social skills, loss and bereavement, Social Stories, Circle of Friends, therapeutic stories and counselling skills including active listening/reflective conversations.
- *Supervision:* ELSAs are line managed in school but receive clinical supervision from a qualified educational psychologist. This happens in groups once per half term. Upon successful completion of the ELSA course, ELSAs are placed on the ELSA register and can access group supervision every half term.
- *Resources:* ELSAs will be provided with a copy of the ELSA handbook full of resources and strategies (normally £29.99). ELSAs will also be given access to the ELSA network and free downloadable resources.

ELSAs can help with:

- Self-esteem
- Social skills
- Emotional literacy
- Friendship issues
- Anger management
- Behaviour
- Anxiety
- Low mood
- Loss and bereavement
- Bullying/Conflict
- Relaxation techniques
- Resiliency

What should I do if I am interested?

- *Choose an ELSA:* ELSAs need to be able to build a good rapport with vulnerable pupils and need to be willing to learn as well as to plan and evaluate programmes of support.
- *When does it start?* The course will begin in September 2019 and one training day will be delivered each week for 5 weeks. Group supervision will follow once every half-term until the end of the academic year and each session lasts 2 hours.
- *Booking and further information:* Places are limited and provided on a first come first served basis. Large primaries, secondaries and special schools can book places for up to 2 delegates. Please contact Donna (details below) for further information and to book a place.
- *Cost:* To train an ELSA costs £750 and this includes 5 supervision sessions until the end of the academic year. This is excellent value for money as it's cheaper than the cost of one child being seen by an EP, but through ELSAs EPs can impact a far greater number of young people and is equivalent to 7 days with an EP. On-going supervision will be required to maintain accreditation and work as an ELSA which includes 6 x 2 hour supervision sessions per academic year and costs £280. Costs can be paid for using your EPS package.

For more information about ELSA including impact evaluations visit: <http://www.elsanetwork.org/>

Senco Workload Report

In September 2018, Bath Spa University, Nasen and the NEU launched the National SENCO Workload survey. The survey aimed to understand the nature of the SENCO workload across varying contexts in order to capture the breadth and depth of the SENCO role. Questions focused on how the role was managed, specifically exploring the time and support SENCOs were able to access to enable them to effectively facilitate their role.

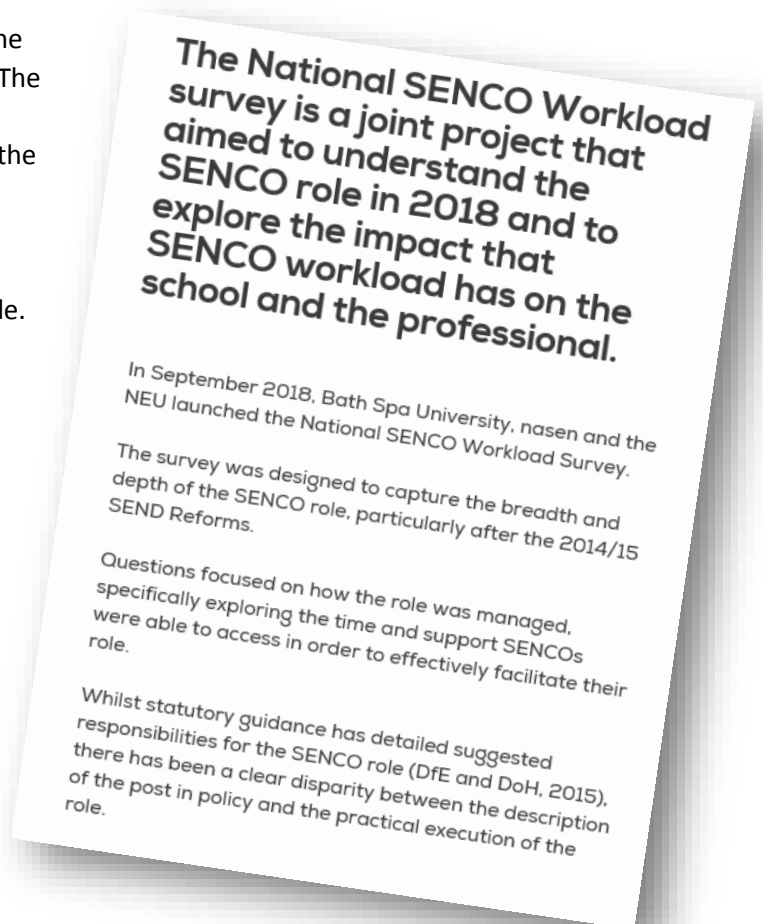
The report identifies a number of recommendations for the Department for Education, School Senior Leaders and SENCOs. *A copy of the report can be downloaded using the link below:*

Shropshire SEN Team would like to capture the views and thoughts of Shropshire SENCOs to inform an action plan to address some of the concerns raised and consider what can be done to support SENCOs in their role.

If you would like to contribute to the Shropshire SENCO survey, it can be found at:

<https://shropshire.gov.uk/the-send-local-offer/practitioners/senco-spotlight-news/senco-workload-survey/>

Completed surveys can be returned to: garry.dean@shropshire.gov.uk



Local Offer Shropshire: A single place for services and information relating to SEND.

Local Offer: <http://shropshire.gov.uk/local-offer/>

Like us on Facebook: <https://www.facebook.com/sclocaloffer/>

Follow us on Twitter: <https://twitter.com/LocalOfferShrop>

SHROPSHIRE FOCUS ON SEND

Issue 7 Spring 2019

News, Views and Information from the SEN Team

Key Dates/Events

Early Years SENCo network meetings		
Date	Time	Venue
1 st July 2019	6pm – 9pm	Riversway Conference Centre
2 nd July 2019	1.30pm – 4.30pm	University Centre, Shrewsbury
8 th July 2019	1.30pm – 4.30pm	North Shropshire College, Oswestry
10 th July 2019	1.30pm – 4.30pm	Mascall Centre, Ludlow

Primary/Secondary SENCo network meetings			
Phase	Date	Time	Venue
Primary	18 th June 2019	1.30pm – 4pm	Mascall Centre, Ludlow
Primary	19 th June 2019	1.30pm – 4pm	University Centre, Shrewsbury
Primary	25 th June 2019	1.30pm – 4pm	University Centre, Shrewsbury
Secondary	26 th June 2019	1.30pm – 4pm	University Centre, Shrewsbury

Autism Education Training (AET)			
Phase	Date	Time	Venue
AET Tier 2	8 th May 2019	9am – 4pm	University Centre, Shrewsbury
AET Tier 3	7 th June 2019	9am – 4pm	University Centre, Shrewsbury

SEN Governor Training		
Date	Time	Venue
22 nd October 2019	5.30pm – 7.30pm	University Centre, Shrewsbury

To enquire or book onto any of the training above please contact University Centre, Shrewsbury on 01743 297168 or email cpd@chester.ac.uk

Local Offer Shropshire: A single place for services and information relating to SEND.

Local Offer: <http://shropshire.gov.uk/local-offer/>

Like us on Facebook: <https://www.facebook.com/sclocaloffer/>

Follow us on Twitter: <https://twitter.com/LocalOfferShrop>