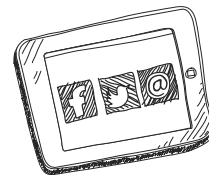
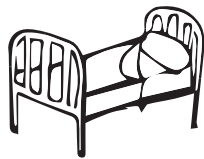


Have your say on the review of rates for commissioning of residential and nursing beds

Shropshire Council are reviewing the rates currently published and paid for the commissioning of residential and nursing beds.

We have launched a public consultation and we are asking for your views.



The consultation starts on
Monday 18 March 2019 until **Friday 26 April 2019**
Find out more and have your say at
www.shropshire.gov.uk/get-involved/
Deadline for submission: Friday 26 April 2019

Please call us or email if you require a paper copy of the survey and send it to:

FREEPOST RSXA-YGES-CXCE
Tell Us
Shropshire Council
Shirehall
Abbey Foregate
Shrewsbury
Shropshire
SY2 6BR



Call: 01743 258422



Email: tellus@Shropshire.gov.uk



Facebook: [shropshirecouncil](https://www.facebook.com/shropshirecouncil)



www.shropshire.gov.uk/get-involved/

