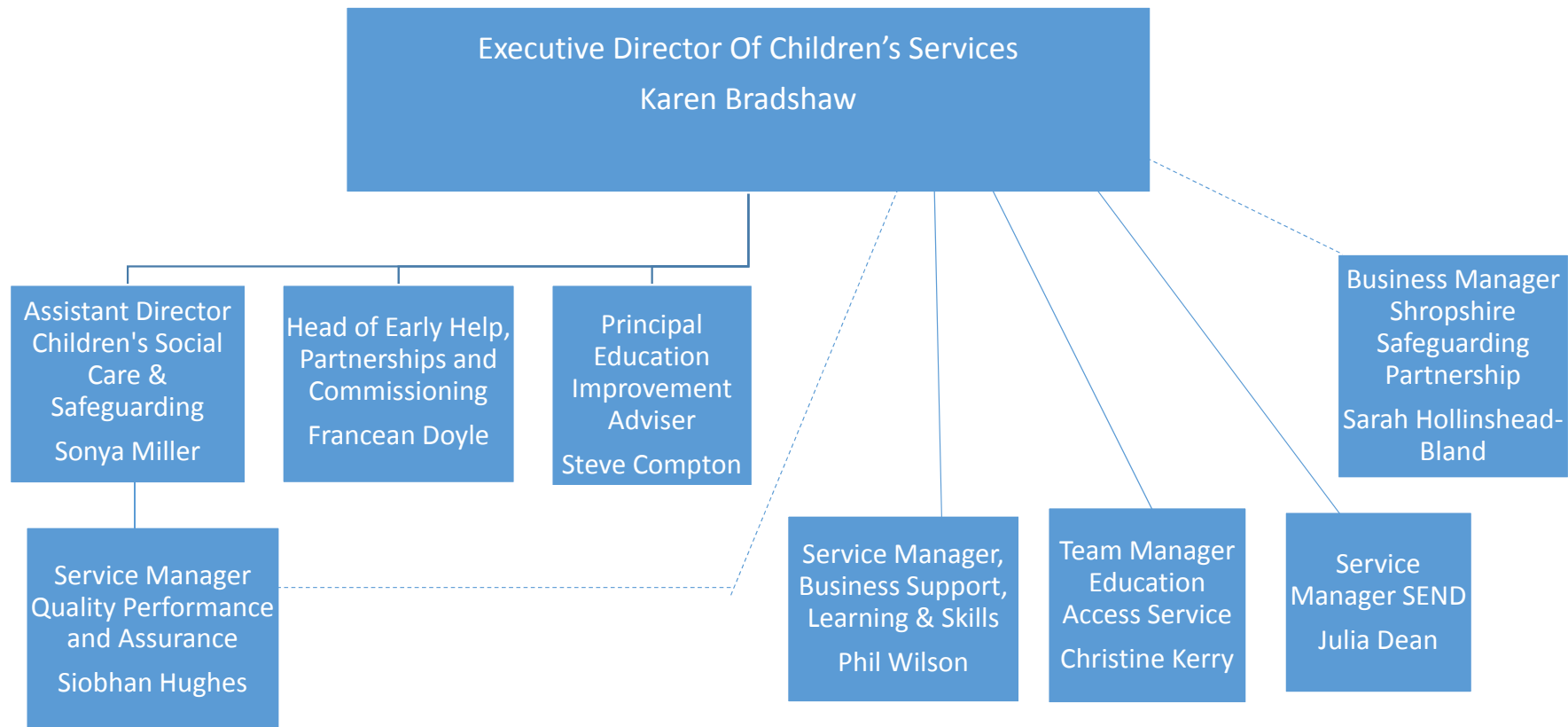
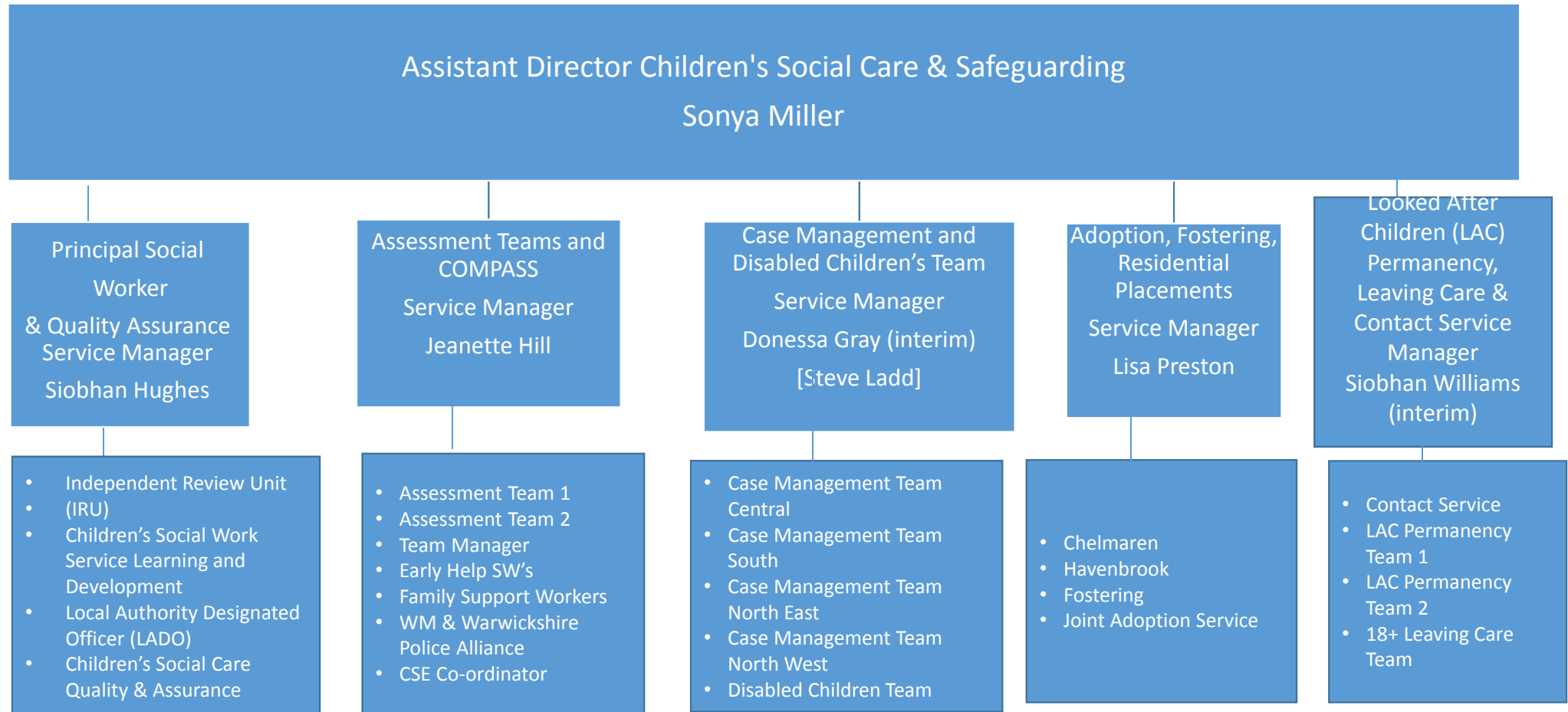
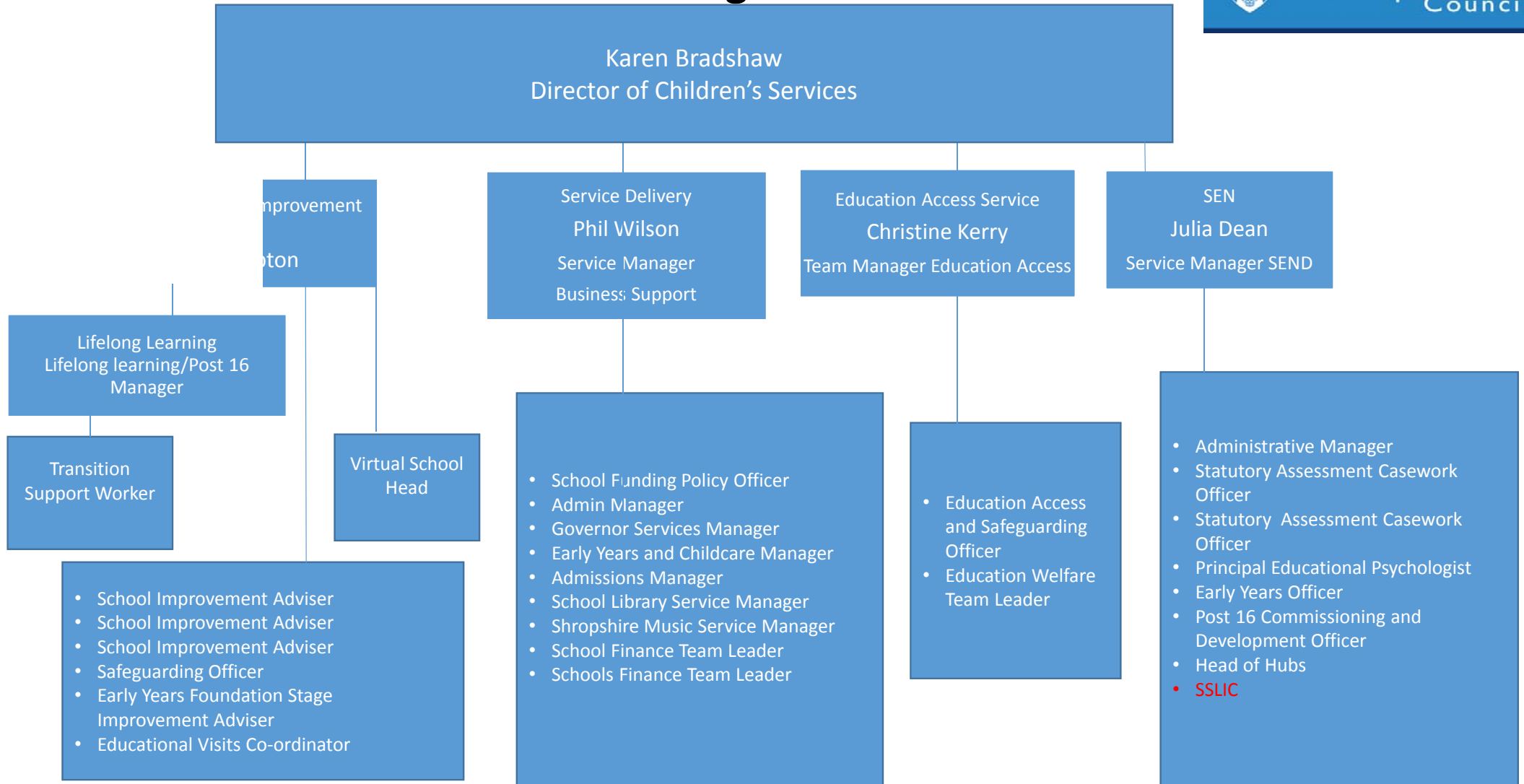


# Children's Services





# Learning and Skills



Head of Early Help, Partnerships & Commissioning  
Francean Doyle

Parenting  
Team -  
Parenting  
Strategy  
Coordinator  
Nadine Last

Early Help Managers  
North: Sharon Graham  
South: Jo Cox  
Central: Nina Kooner

Strengthening  
Families  
Coordinator  
Kay Smallbone

Targeted Youth  
Support

Early Help  
Change  
Project  
Manager  
Karen Ladd

Children's  
Services  
Commissioning  
-  
Commissioning  
Development  
Officer  
Marion Versluijs