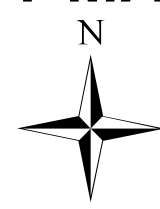


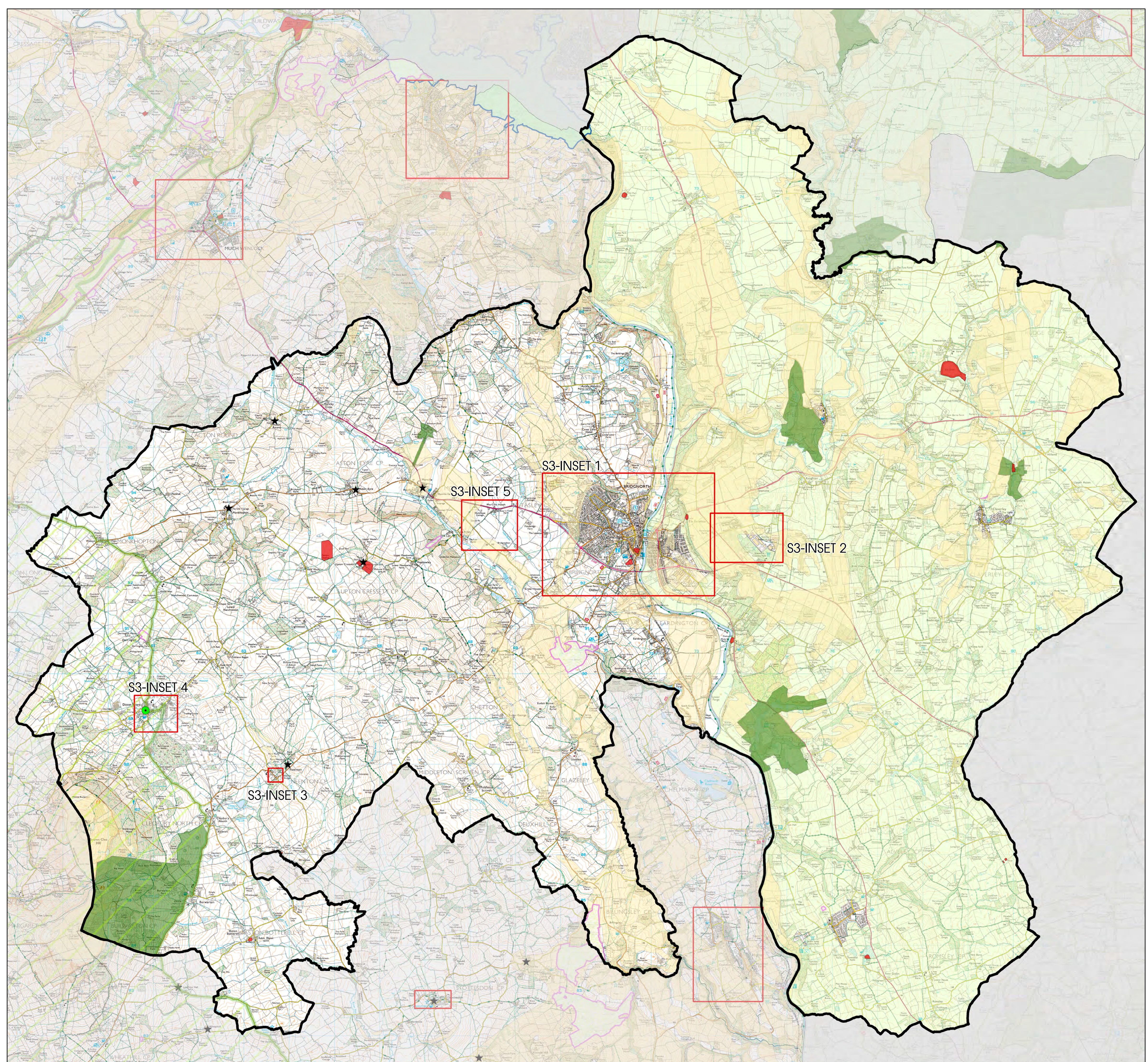
SHROPSHIRE COUNCIL POLICY MAP S3 Bridgnorth Area



Key

- ★ Community Cluster
- Community Hub
- Inset
- SSSi
- AONB
- World Heritage Site Buffer Zone
- Scheduled Ancient Monument
- Registered Parks
- Mineral Safeguarding Area
- Greenbelt Adopted July 2006

© Crown copyright and database rights 2014
Ordnance Survey 100049049

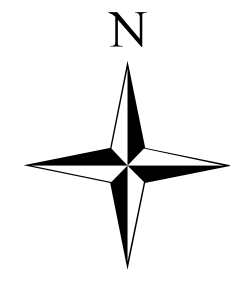


SHROPSHIRE COUNCIL POLICY MAP

Bridgnorth Area

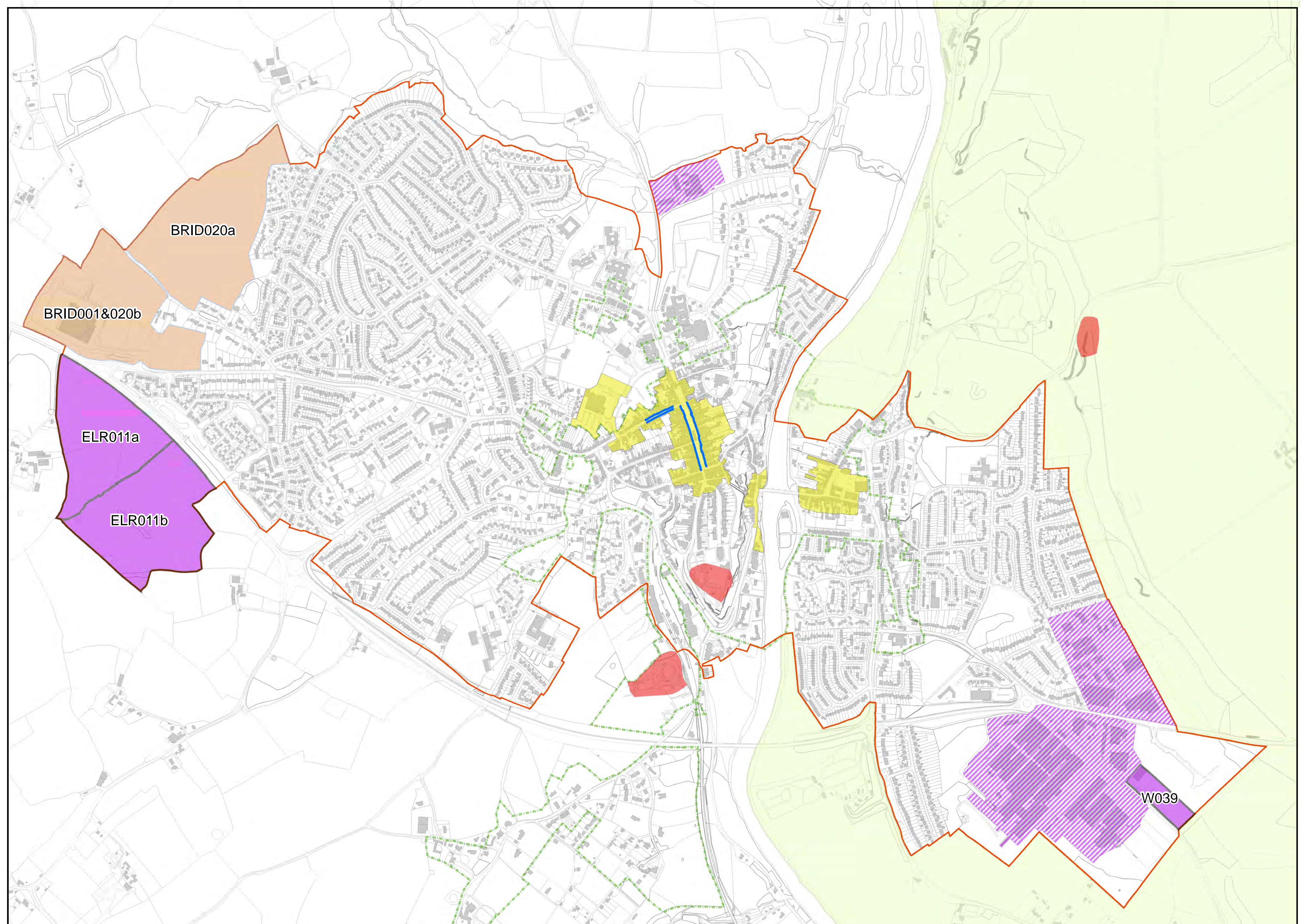
S3-INSET 1

Key

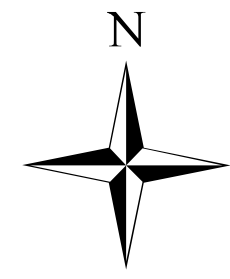


-  Housing
-  Employment
-  Protected Employment Area
-  Primary Shopping Area
-  Town Centre
-  Scheduled Ancient Monument
-  Development Boundary
-  Registered Parks
-  Greenbelt Adopted July 2006
-  Conservation Area

© Crown copyright and database rights 2014
Ordnance Survey 100049049



SHROPSHIRE COUNCIL POLICY MAP
Bridgnorth Area
S3-INSETS 2, 3, 4, 5.



Key

- Housing
- Conservation Area
- Protected Employment Area
- Development Boundary
- Mineral Site Extension
- Existing Mineral Site
- AONB

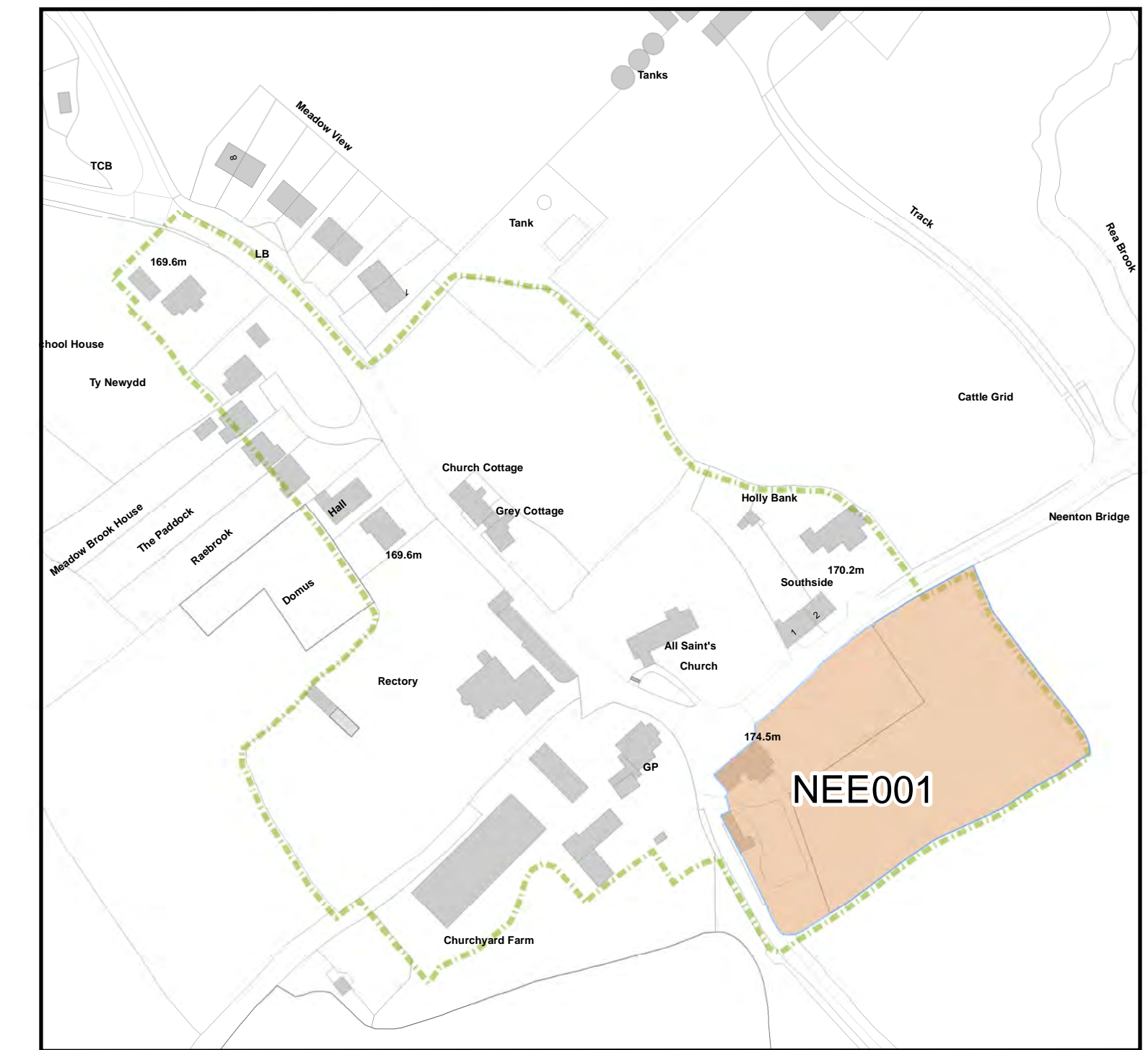
© Crown copyright and database rights 2014
 Ordnance Survey 100049049



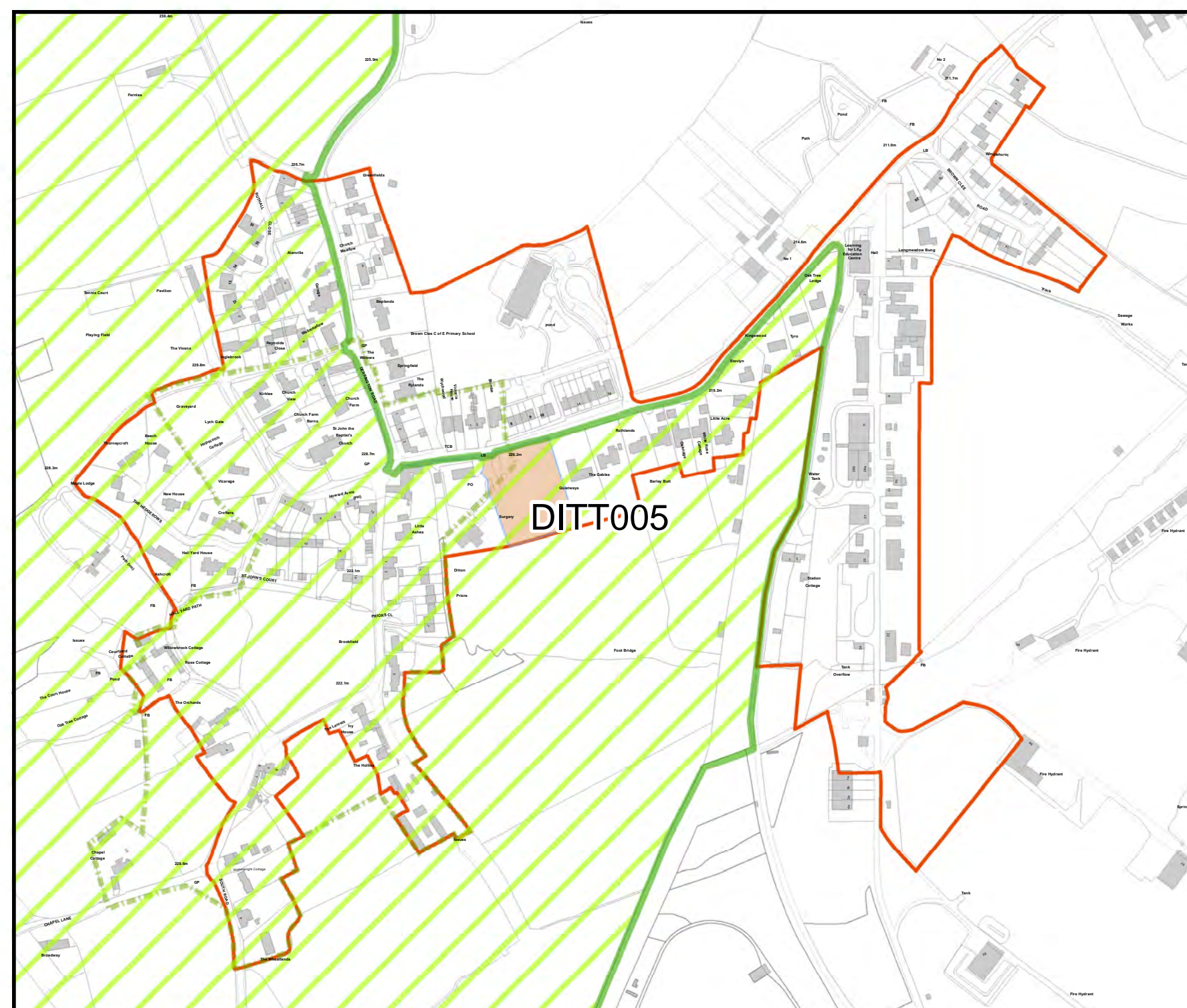
S3 Inset 2 The Hobbins & Stanmore Industrial Estate



S3 Inset 3 Neenton



S3 Inset 4 Ditton Priors



S3 Inset 5 Morville Minerals

