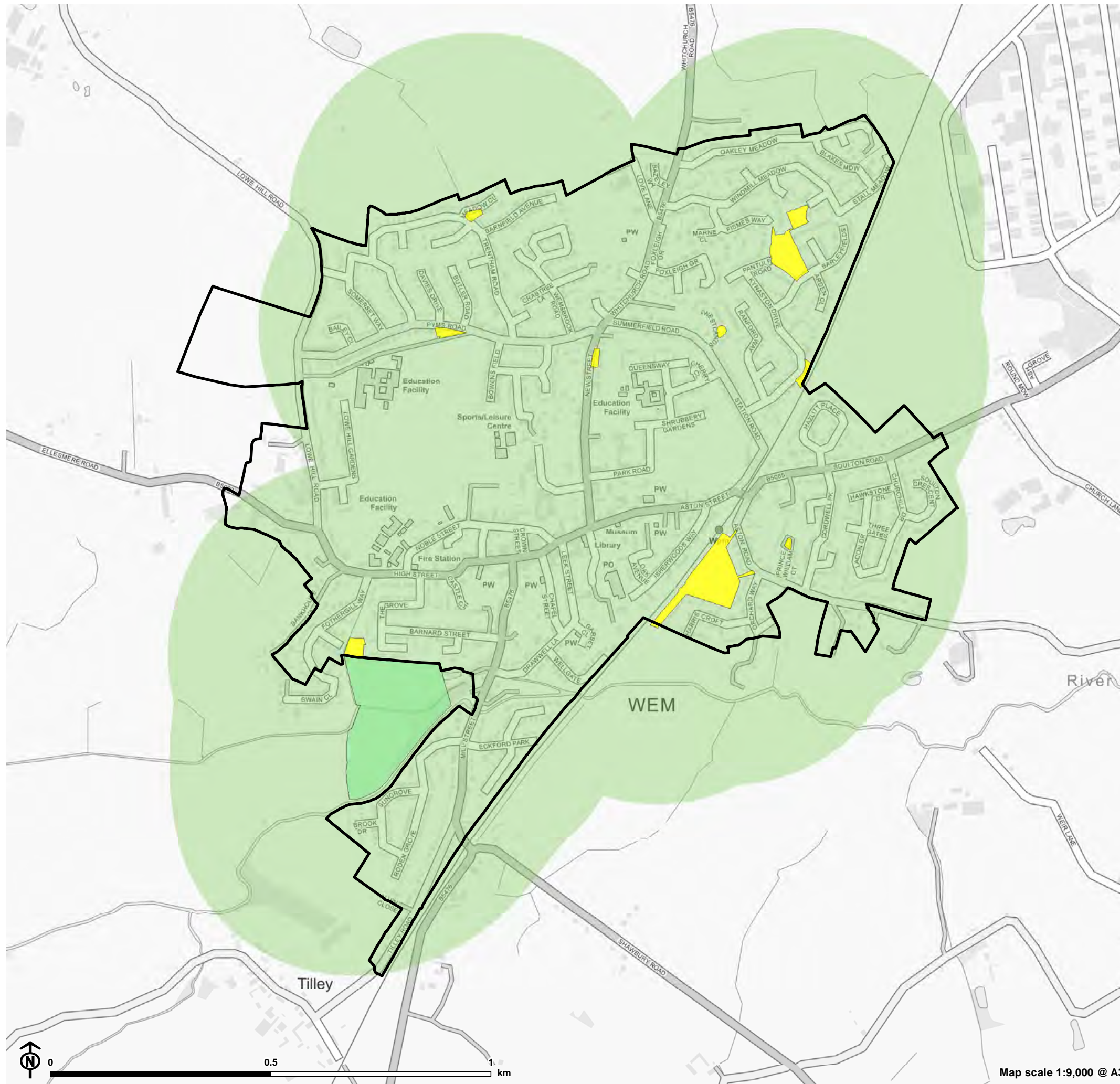
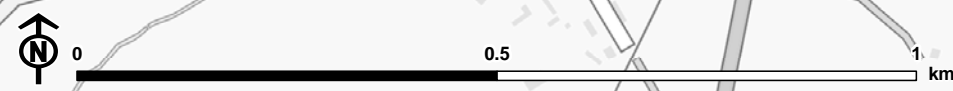


Figure 3.19: Local Open Space Access in Wem

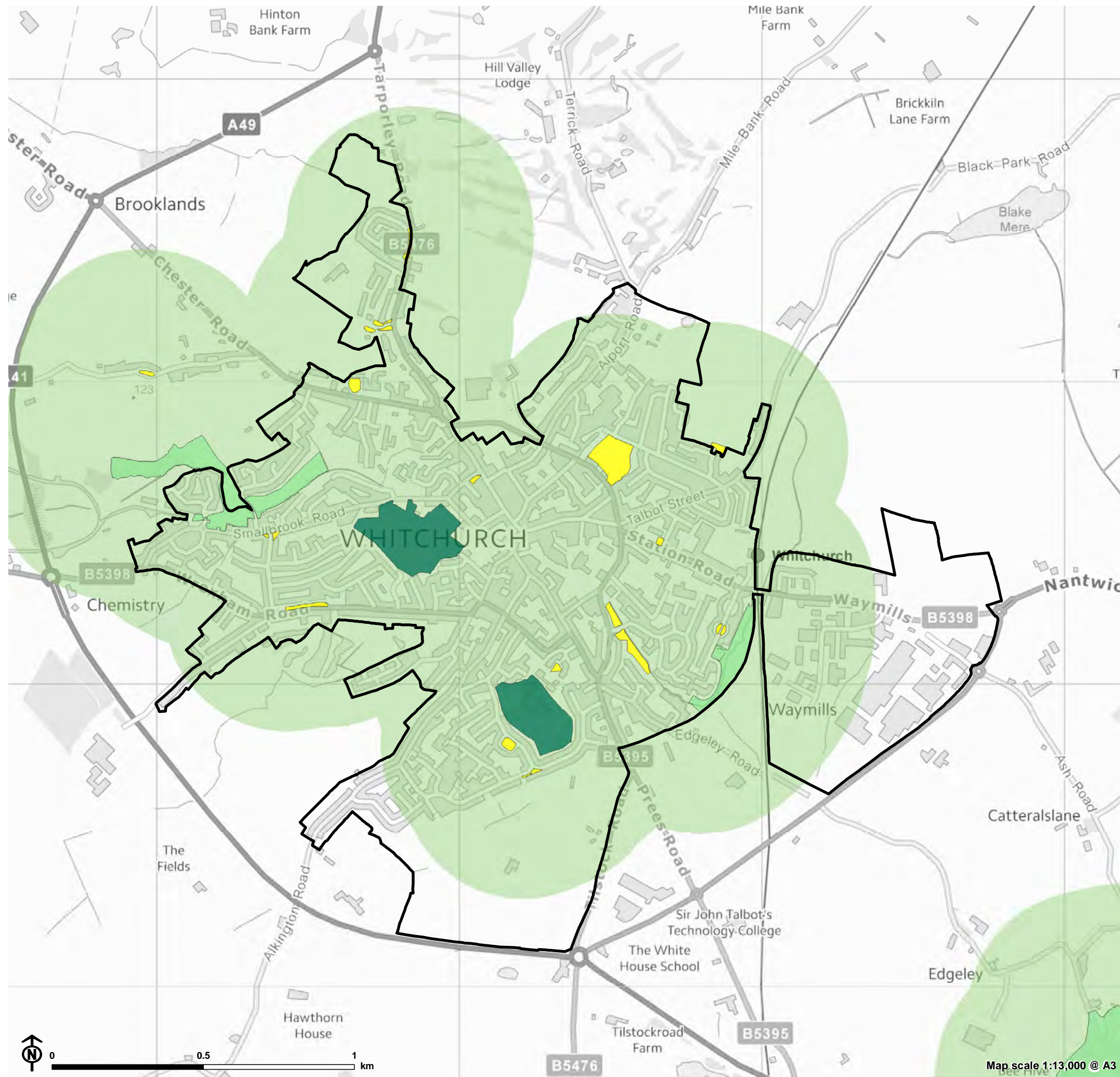


- Settlement
- Open space typology**
- Natural and Semi Natural Green Space
- Amenity Green Space
- 400m access buffer**
- Freely accessible to public



Map scale 1:9,000 @ A3

Figure 3.20: Local Open Space Access in Whitchurch

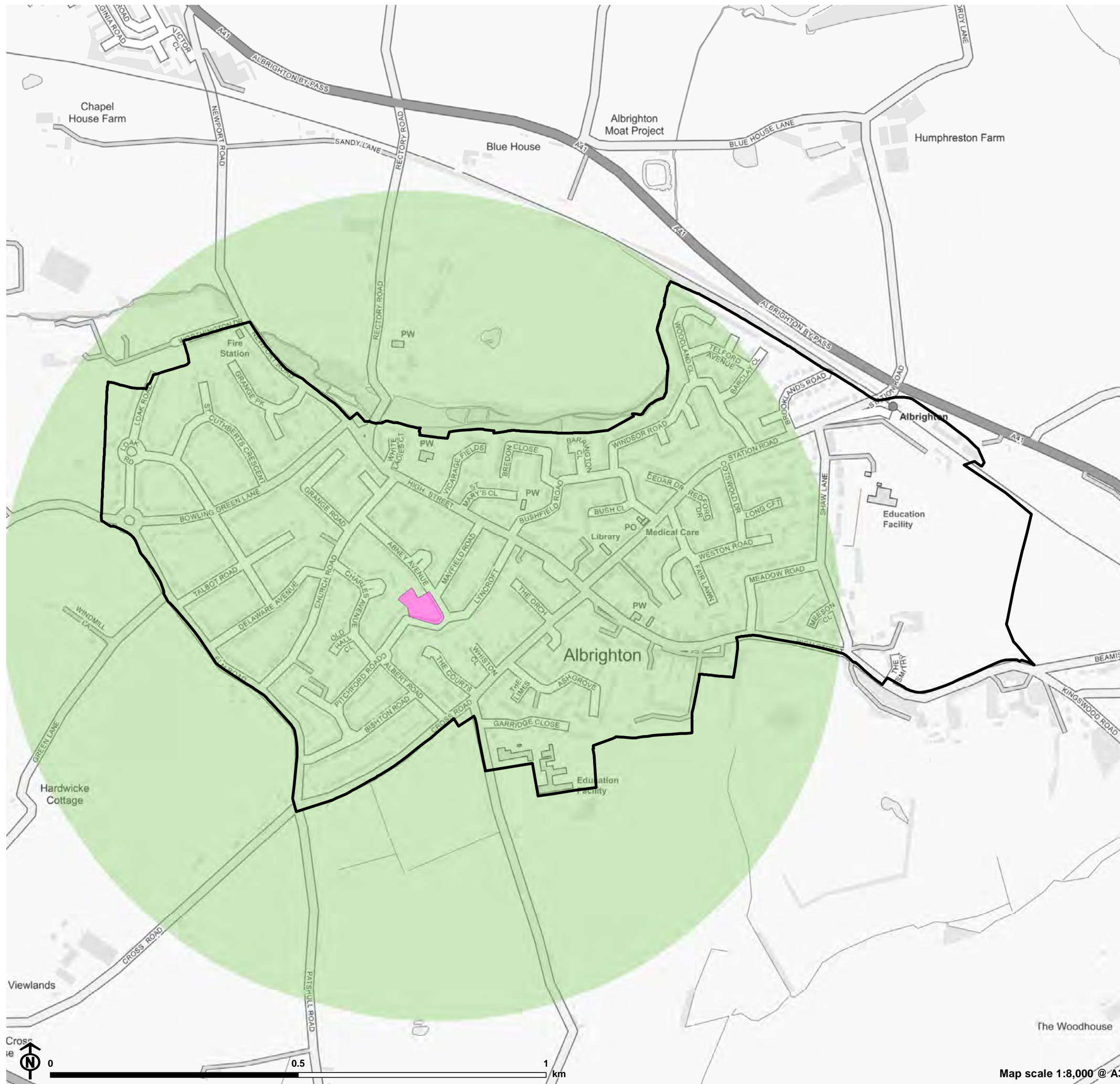


- Settlement
- Open space typology**
- Parks and Gardens
- Natural and Semi Natural Green Space
- Amenity Green Space
- 400m access buffer**
- Freely accessible to public
- Unknown

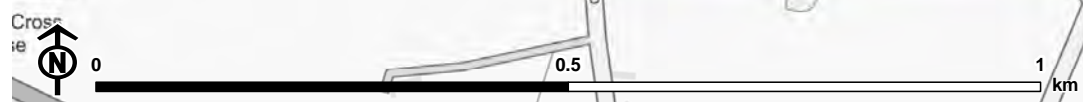


Map scale 1:13,000 @ A3

Figure 4.1: Provision for Children and Teenagers Access in Albrighton

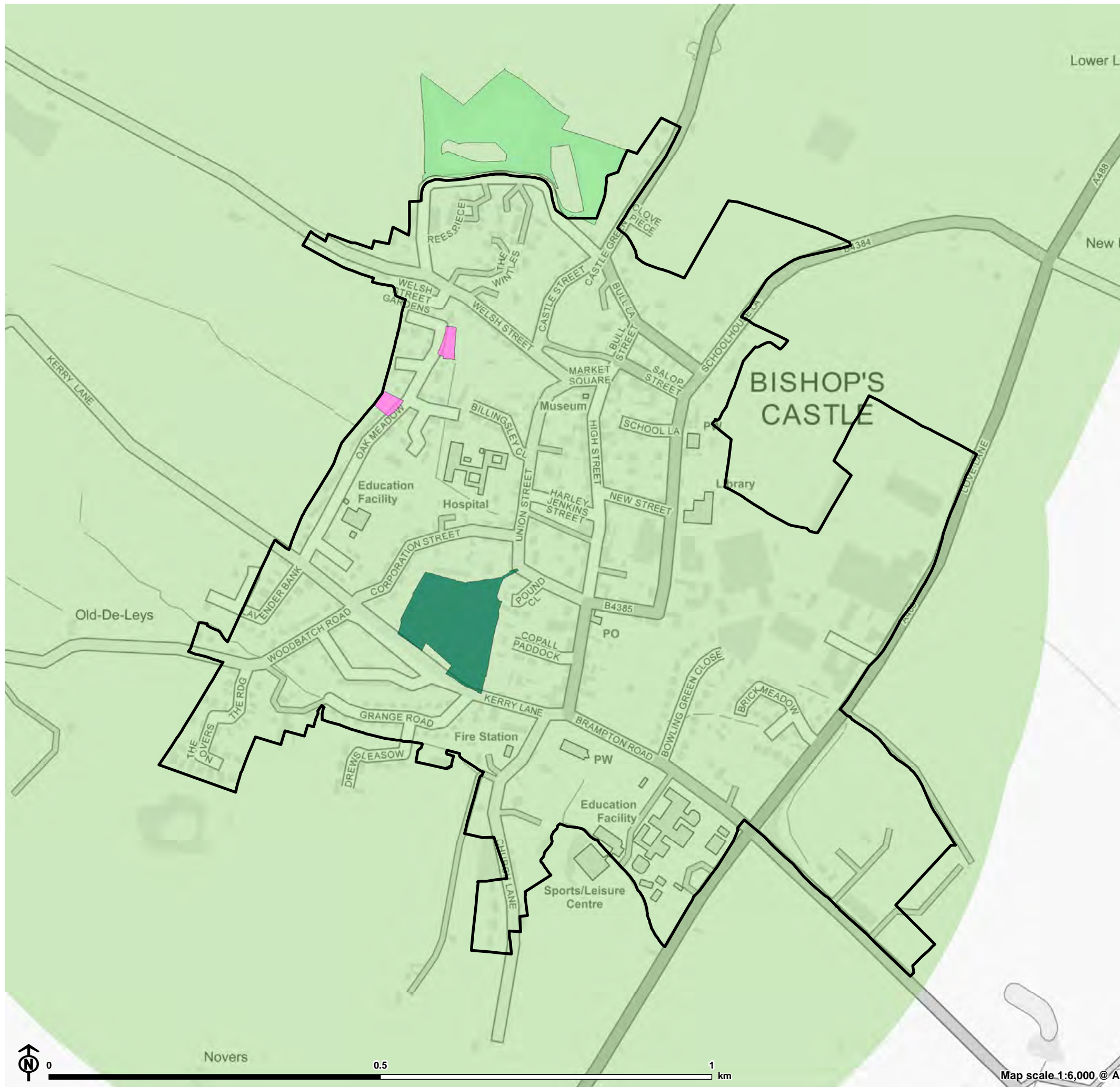


- Settlement
- Open space typology**
- Provision for Children and Teenagers
- 800m access buffer**
- Freely accessible to public

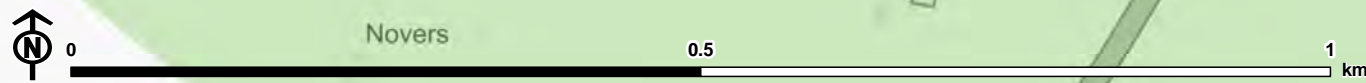


Map scale 1:8,000 @ A3

Figure 4.2: Provision for Children and Teenagers Access in Bishop's Castle

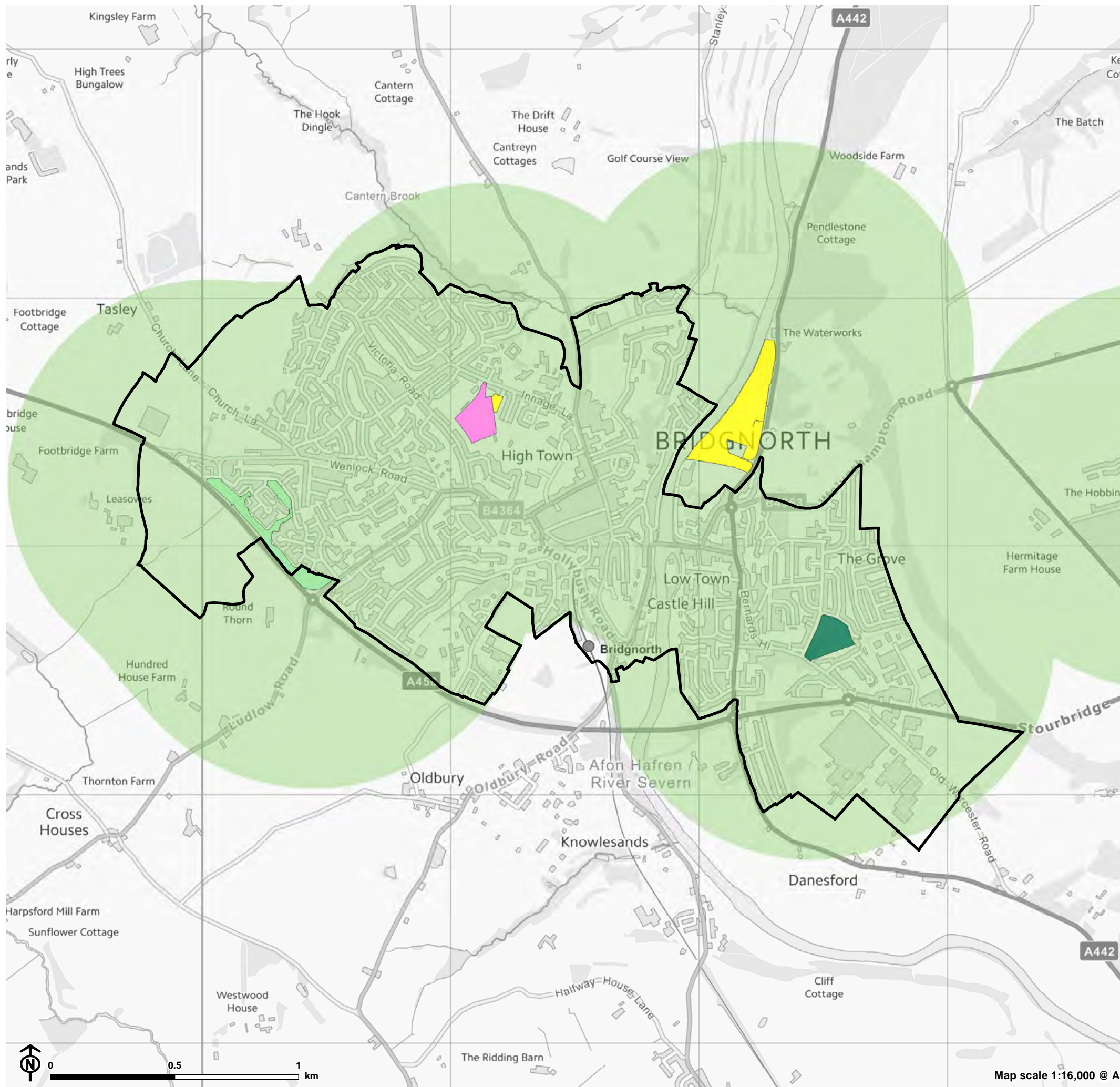


- Settlement
- Open space typology**
- Parks and Gardens
- Natural and Semi Natural Green Space
- Provision for Children and Teenagers
- 800m access buffer**
- Freely accessible to public

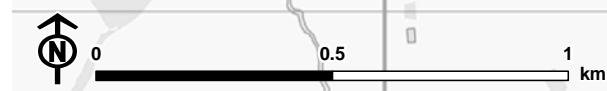


Map scale 1:6,000 @ A3

Figure 4.3: Provision for Children and Teenagers Access in Bridgnorth

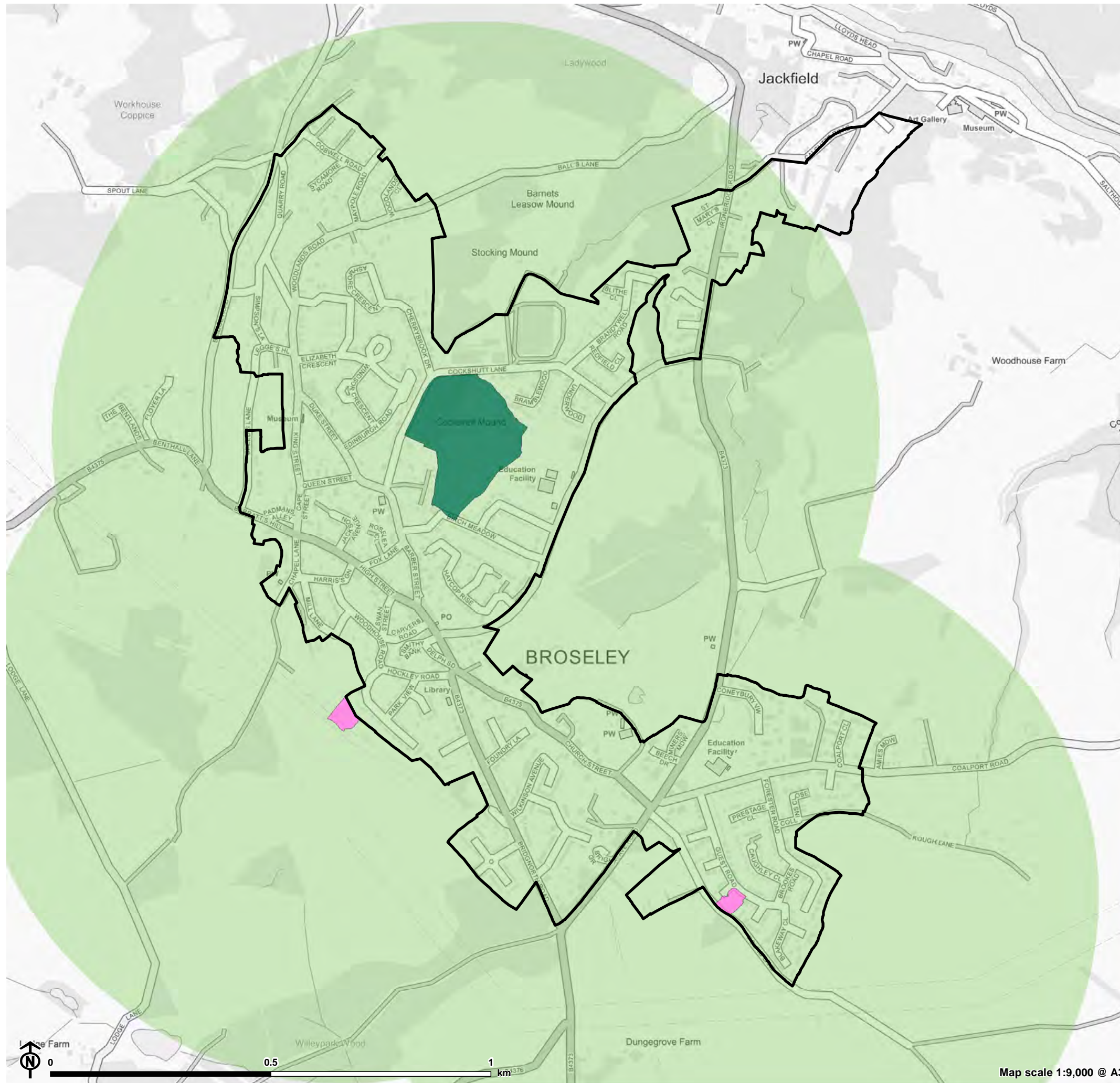


- Settlement
- Open space typology**
 - Parks and Gardens
 - Natural and Semi Natural Green Space
 - Amenity Green Space
 - Provision for Children and Teenagers
- 800m access buffer**
 - Freely accessible to public

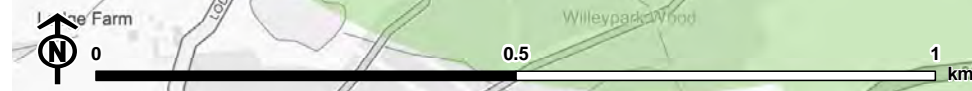


Map scale 1:16,000 @ A3

Figure 4.4: Provision for Children and Teenagers Access in Broseley

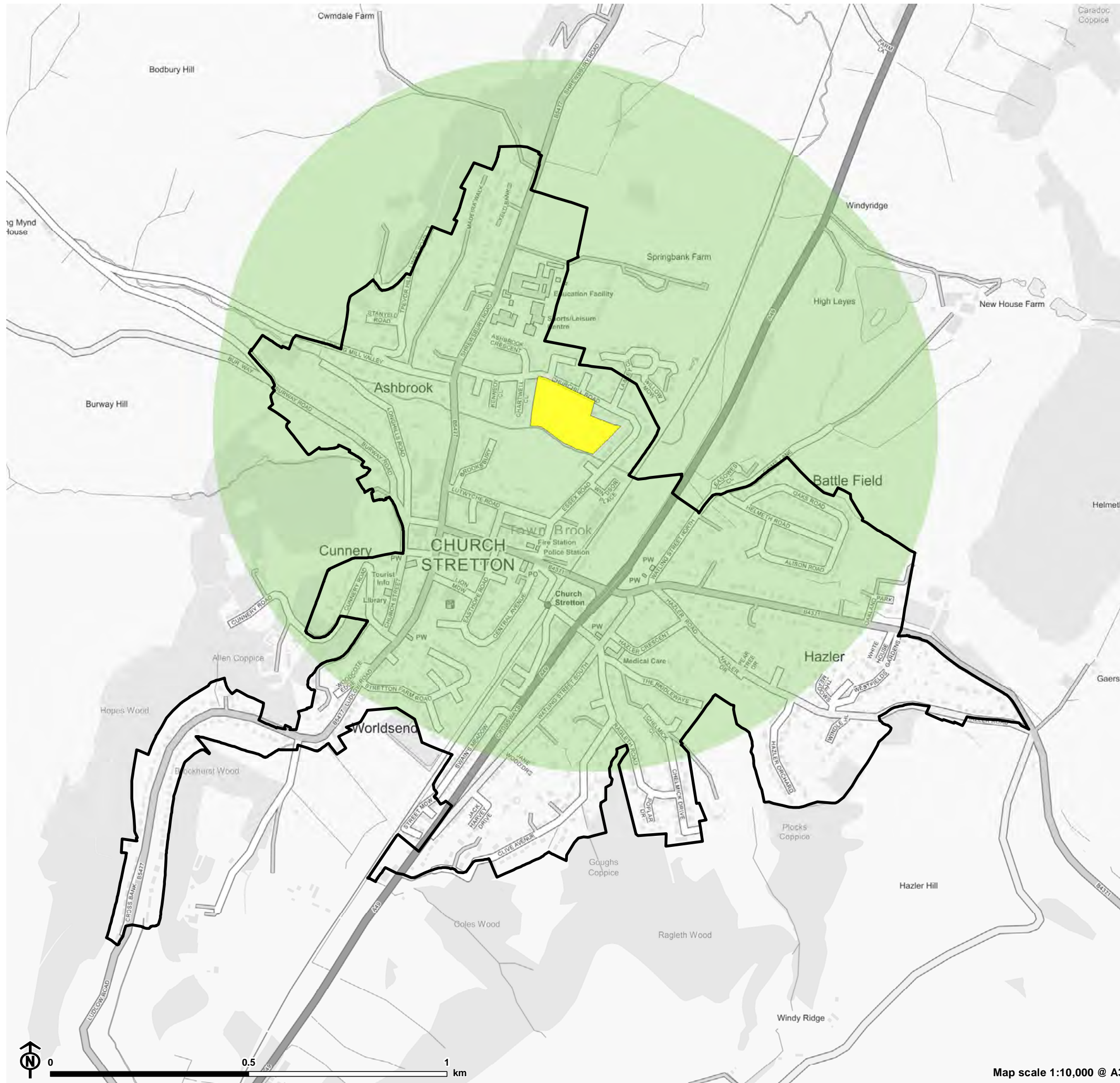


- Settlement
- Open space typology**
- Parks and Gardens
- Provision for Children and Teenagers
- 800m access buffer**
- Freely accessible to public



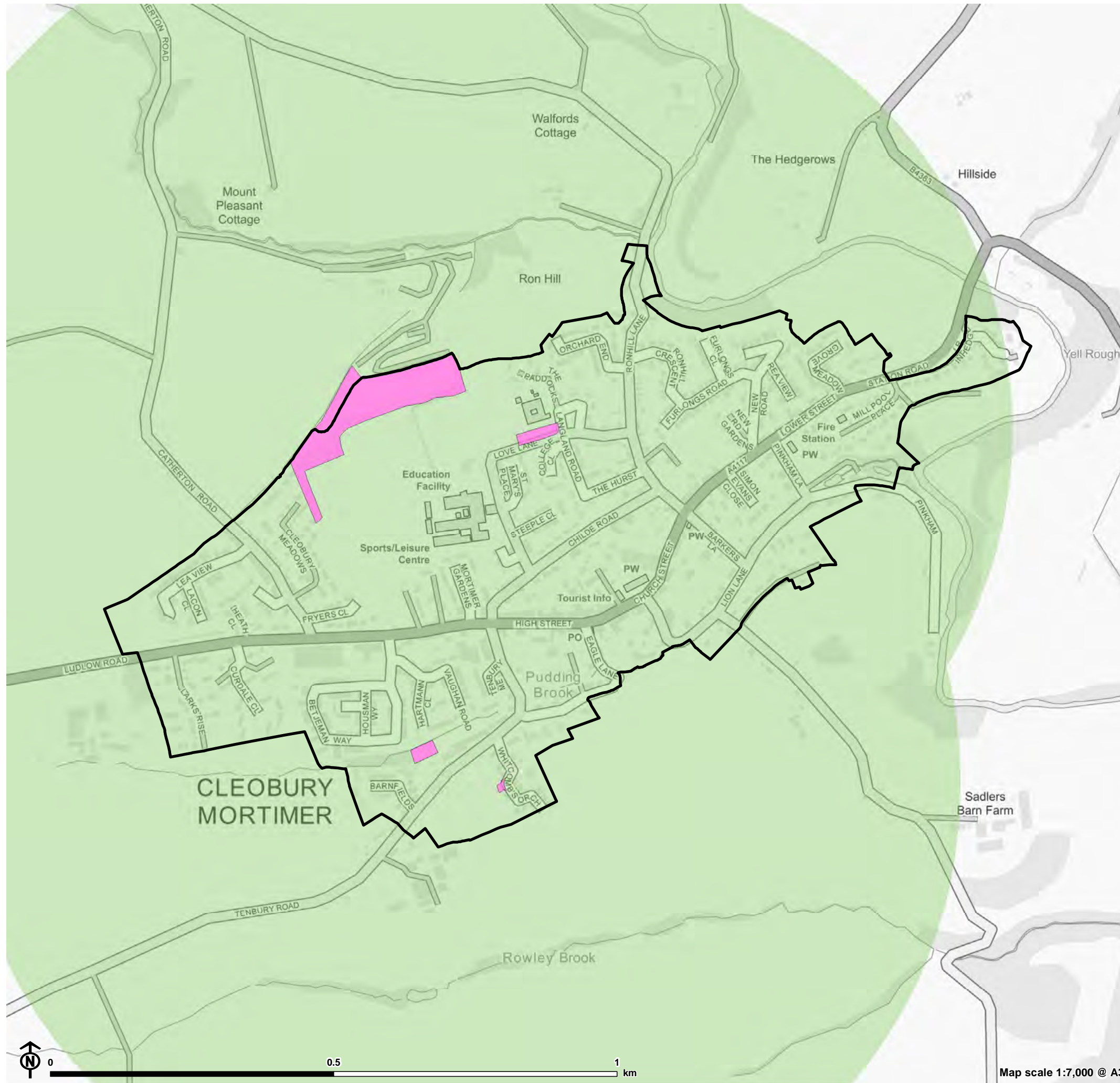
Map scale 1:9,000 @ A3

Figure 4.5: Provision for Children and Teenagers Access in Church Stretton

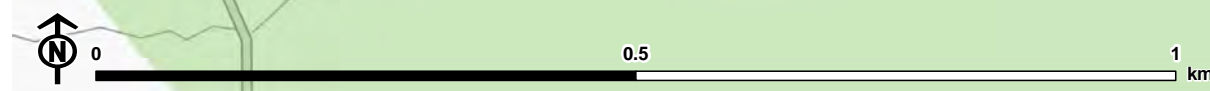


- Settlement
- Open space typology**
- Amenity Green Space
- 800m access buffer**
- Freely accessible to public

Figure 4.6: Provision for Children and Teenagers Access in Cleobury Mortimer



- Settlement
- Open space typology**
- Provision for Children and Teenagers
- 800m access buffer
- Freely accessible to public



Map scale 1:7,000 @ A3

Figure 4.7: Provision for Children and Teenagers Access in Clive Barracks at Tern Hill

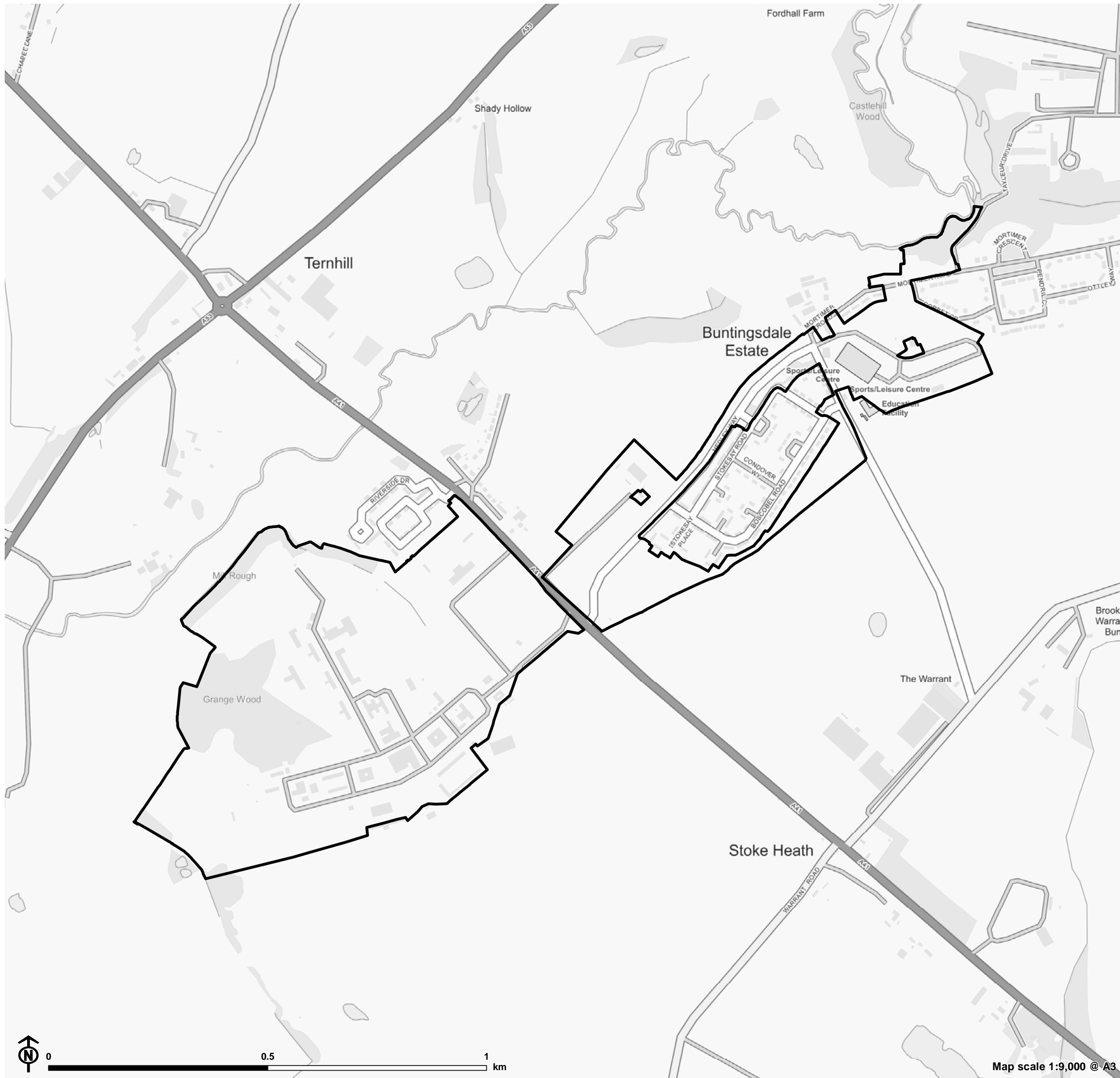
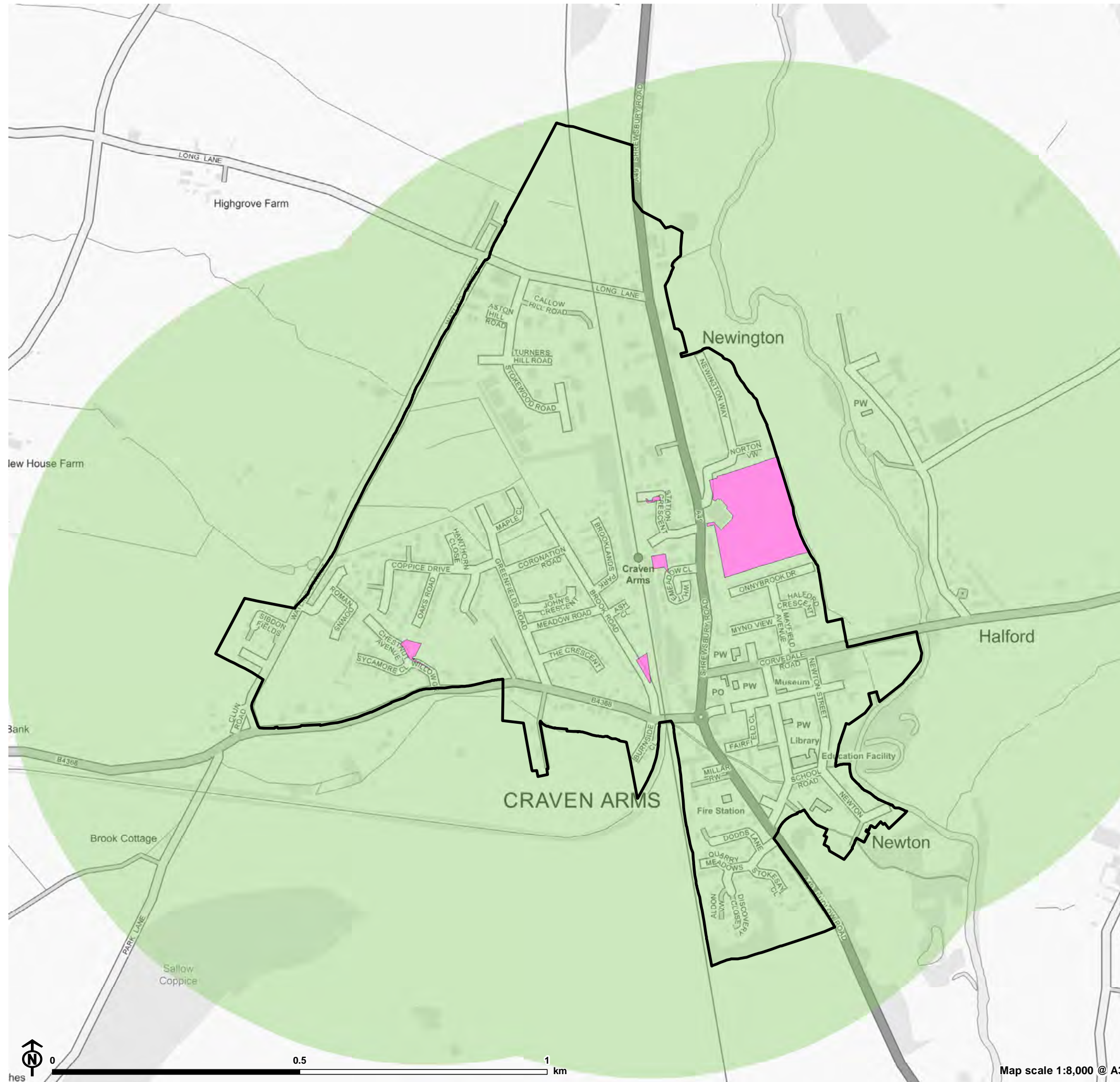
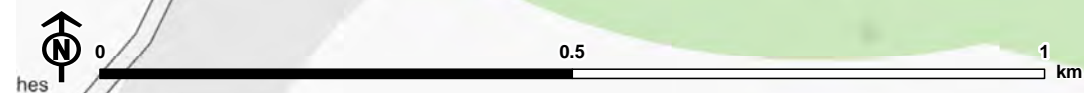


Figure 4.8: Provision for Children and Teenagers Access in Craven Arms

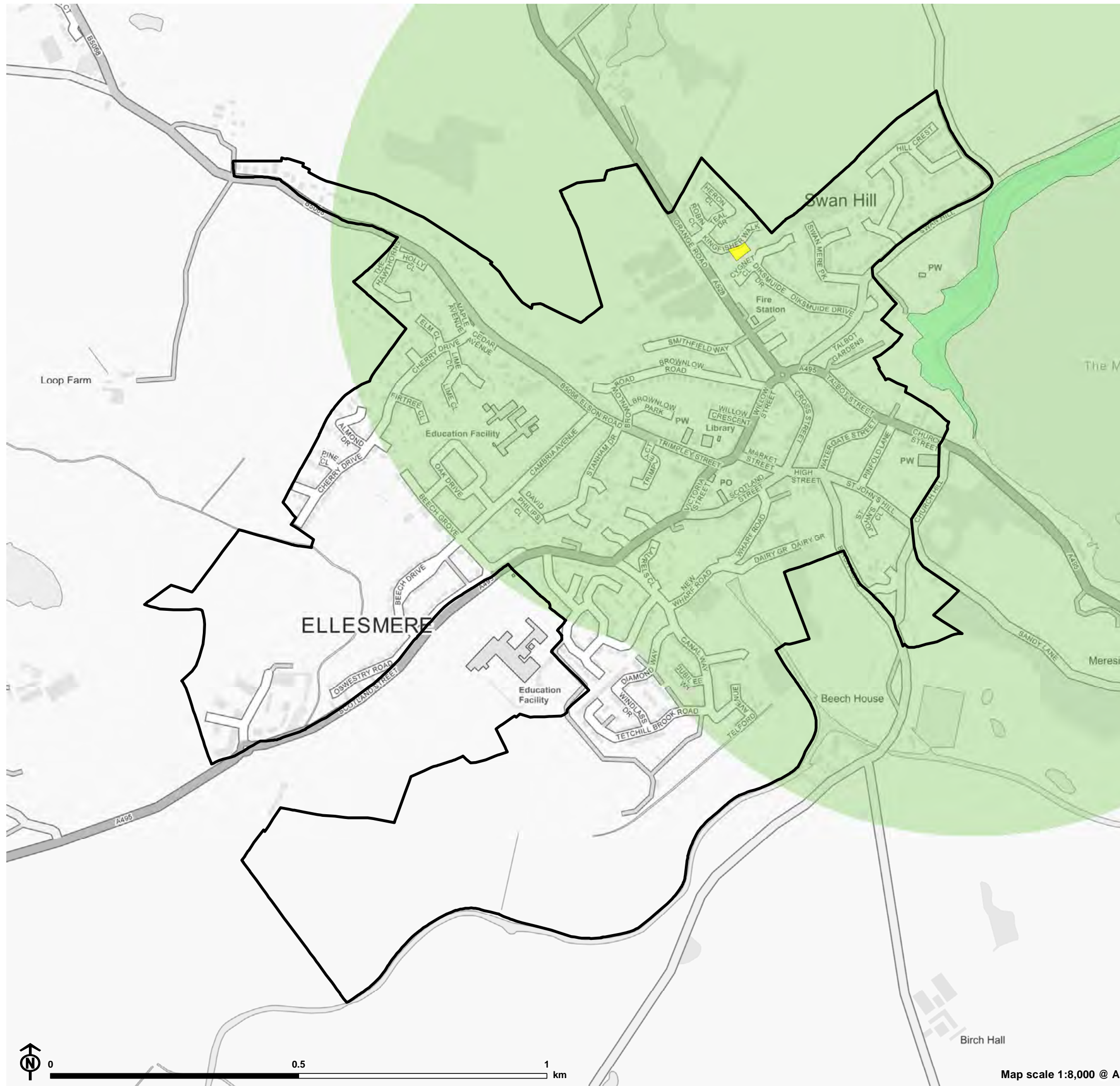


- Settlement
- Open space typology**
- Provision for Children and Teenagers
- 800m access buffer**
- Freely accessible to public



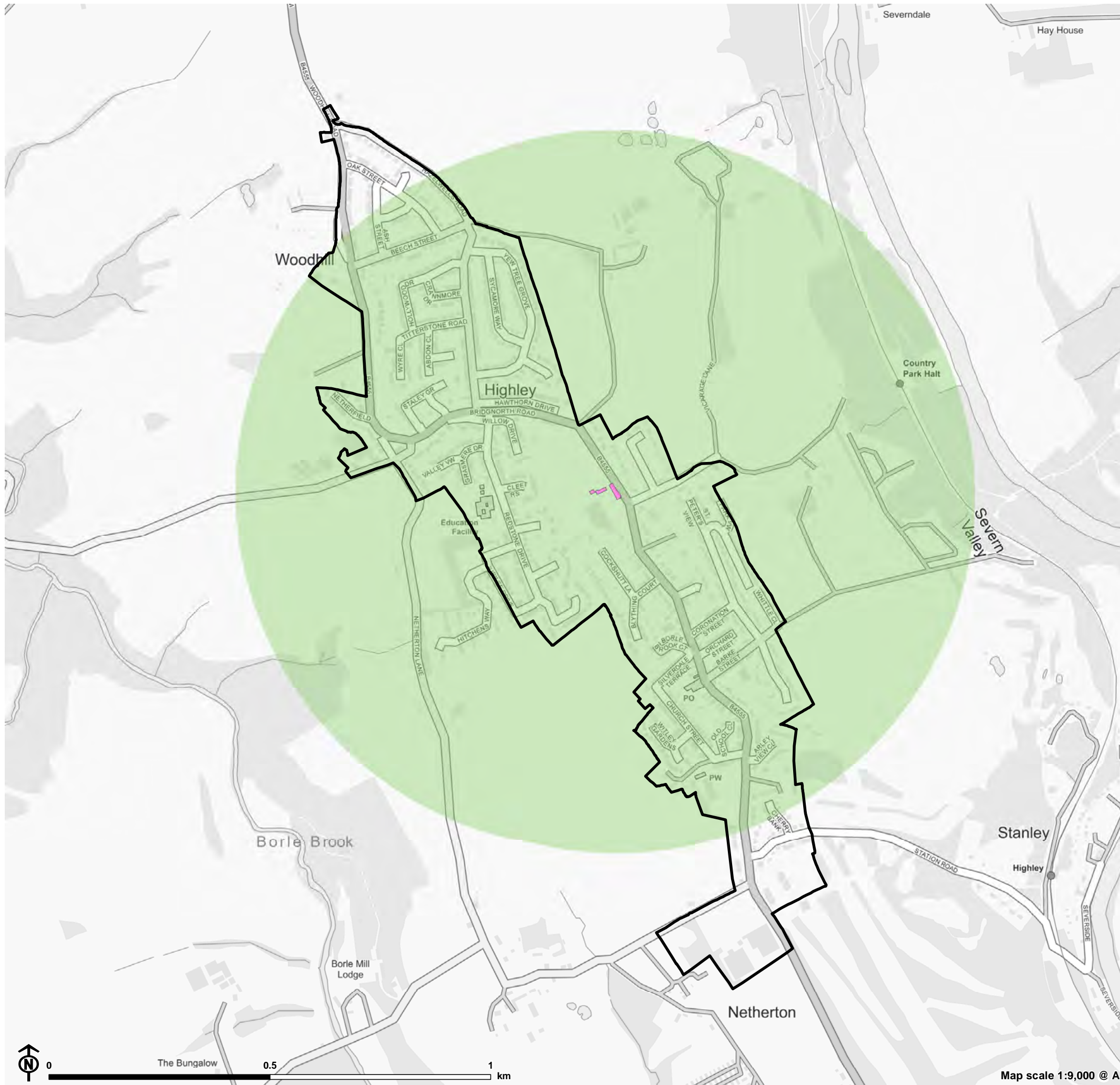
Map scale 1:8,000 @ A3

Figure 4.9: Provision for Children and Teenagers Access in Ellesmere

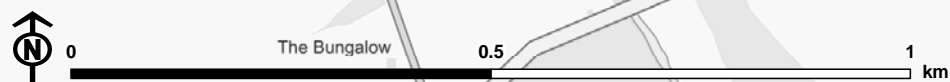


- Settlement
- Open space typology**
- Natural and Semi Natural Green Space
- Amenity Green Space
- 800m access buffer**
- Freely accessible to public

Figure 4.10: Provision for Children and Teenagers Access in Highley

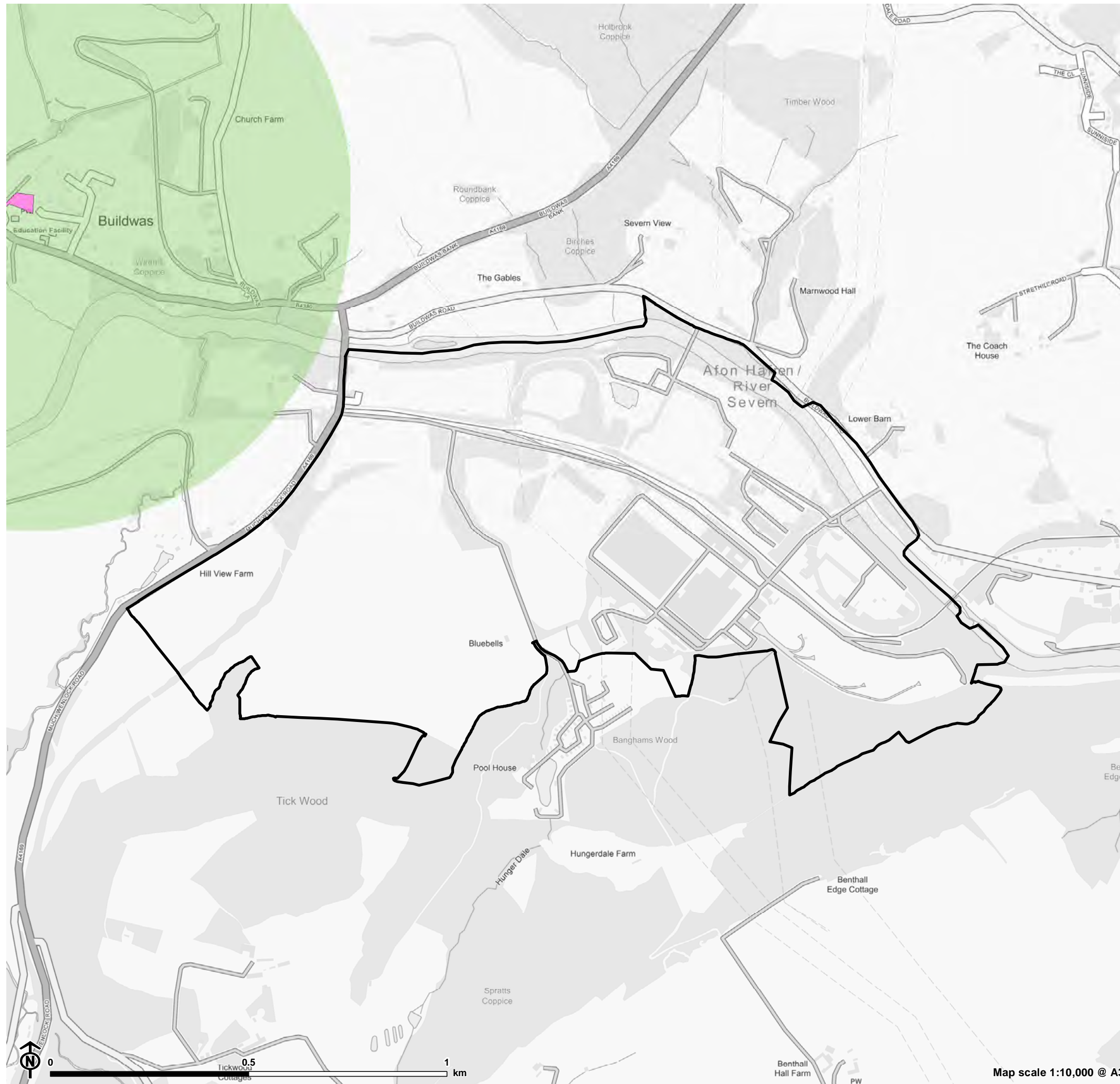


- Settlement
- Open space typology**
- Provision for Children and Teenagers
- 800m access buffer**
- Freely accessible to public

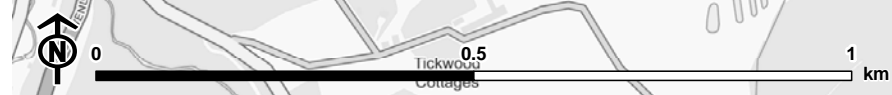


Map scale 1:9,000 @ A3

Figure 4.11: Provision for Children and Teenagers Access in Ironbridge Power Station



- Settlement
- Open space typology**
- Provision for Children and Teenagers
- 800m access buffer**
- Freely accessible to public



Map scale 1:10,000 @ A3