



Our School Development Plan 2022-24



Shropshire Virtual School is the Education Champion in the Local Authority for children and young people in care to Shropshire. We can also provide advice around education for Previously Looked-After Children and those Children who have a Social Worker. We work hard to ensure that our children and those leaving care have the opportunities they need to fulfil their potential and improve their life chances. Our team promotes education, achievement and wellbeing and we influence policy and practice that affects our learners. We advise and work closely with schools/settings and other professionals such as social workers, independent reviewing officers, health and foster carers to support our children to fulfil their potential. The Virtual School provides training to professionals on matters that are important for our children - and we aim to improve our pupils' access to services.

We also manage the Pupil Premium + budget and other Grants to target money towards the things our children need to be successful in their education, employment or training. It is important we hear their voice around the things that are important to them so we can act in their best interests. As we are part of the Corporate Parent for our children and young people in care, we are mindful to promote a way of working that asks the question “would this be good enough for my own child?”. A key part of our approach is that we promote high aspirations for all our learners, celebrating their achievements across a wide range of activities and as a service we aspire to be “a safe and reassuring pair of hands” providing “the right support in the right place at the right time”. This plan does not describe all the activities we undertake to support our children and young people, it shows our targeted areas for development in this period.

Our Plan is reviewed termly and will be refreshed in Summer 2023 for 2023-24 in order to be responsive to change.



Our school development plan



Leadership & Management

Our service will be fully resourced to meet the needs of our 3 'families' of children & young people - and our team members. As a school we will live up to our Values as "a safe and reassuring pair of hands" providing "the right support in the right place at the right time".

We will know how we are making a difference, using data well to inform our practice - and there will be robust data capture to support analysis, action and reporting so the school can strive to perform well on KPIs.

Our children & partners will know who we are, what we do, feel supported and feel that they have a voice in shaping our service offer.

We will develop our new Core and Enhanced Training Offers focusing on inclusion, recovery, resilience and our schools becoming attachment/trauma responsive. A Conference will be held for schools & partners to support this focus.

We will create the sense of being one school supporting three families, embracing remote first working whilst also having time together.



Our school development plan



- We will develop & deliver a high-quality training offer to schools with the aim of supporting recovery, resilience, transition and inclusion for our three 'families' of children and young people
- Shropshire Virtual School will become increasingly visible to stakeholders, with high-quality regular communications and social media presence/resources. We will enhance partnerships with stakeholders, increase integrated working & increasingly influence strategic outcomes at the LA
- Data tracking will be embedded in practice across Attainment & Progress, PEPs, CWSW, Post 16, Participation – and we will drive forward change ready relating to the new Attendance guidance. We will be able to tell how we make a difference and our Key Performance Indicators are in line with or better than National Averages
- We will develop resource & training to improve Speech & Language skills for our children – and there is impact on outcomes for children in the Early Years up to end of Key Stage 1. We will develop our home learning offer in line with the White Paper and engage Carers with this.



Our school development plan



- Our new Shropshire PEP will be launched successfully - and this will support driving up standards of Good Quality PEPs. The Post 16 PEP will be developed on to the LCS system.
- We will develop and deliver a robust Training Offer to Social Workers, Designated Safeguarding Leads & SENCOs to support promoting achievement and inclusion of CWSW – and we will develop robust integrated working to ensure education is a priority area in Child in Need and Child Protection Plans.
- We will develop robust tracking of data for CWSW, so this is established and embedded for high quality reporting and planning for strategic action
- We will make a strong positive contribution to strategic work with our Regional Adoption Agency (Together 4 Children), we will deepen our support offer for parents, promoting understanding of PP+ and how it can be used effectively. We will develop a clear & positive transition offer and process to support children moving from CLA to PLAC



Our school development plan



- We will develop an annual calendar of participation activities for each school holiday across CLA and PLAC families, including Celebration events, to support children positively engage in increasing numbers, including those living Out of Authority. We will develop a School Council so that our young people can be supported to have a voice about things that matter to them, supporting them to be heard and shape practice for CLA in the Local Authority.
- We will develop effective use of the Strengths and Difficulties Questionnaire and Social Emotional and Mental Health (SEMH) scales on our new PEP in relation to supporting positive mental health of our Shropshire Children in Care.
- We will build capacity in schools for supporting positive post 16 destination planning and our Post 16 Unaccompanied Asylum-Seeking Young People (UASYP) will have increased opportunities to access education through the year, in or out of county. Our young people will have new opportunities created for work experience in the 'family business'
- We will build our offer for children and young people making educational transitions, increasing resources and training to support schools/provisions to build capacity.



Jo Kelly
Virtual School Head Teacher



Anne Williams
Specialist Education Access Officer



Lorraine Griffiths
CIAG PA (Post 16)



Paula Edwards
Administrator



Lindsay Armstrong
Asst Head



Georgia Smith
Specialist Teacher



Lisa Peters
Specialist Teacher



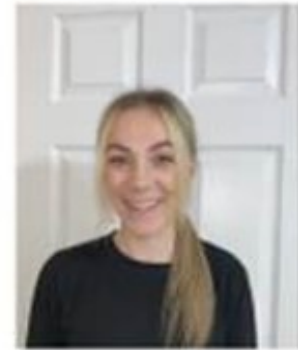
James Waller-Davies
Specialist Teacher



Adriana Coupe
Specialist Teacher



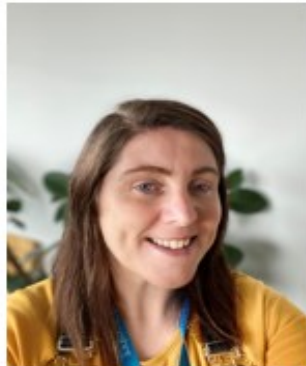
Amy Foulger
Education Advice & Support Officer



Beth Francis
Participation



Katherine Jones
Education Advice & Support Officer



Suzie Rawson
Post 16 EASO



Catherine Brown
Administrator



Our Virtual School Team