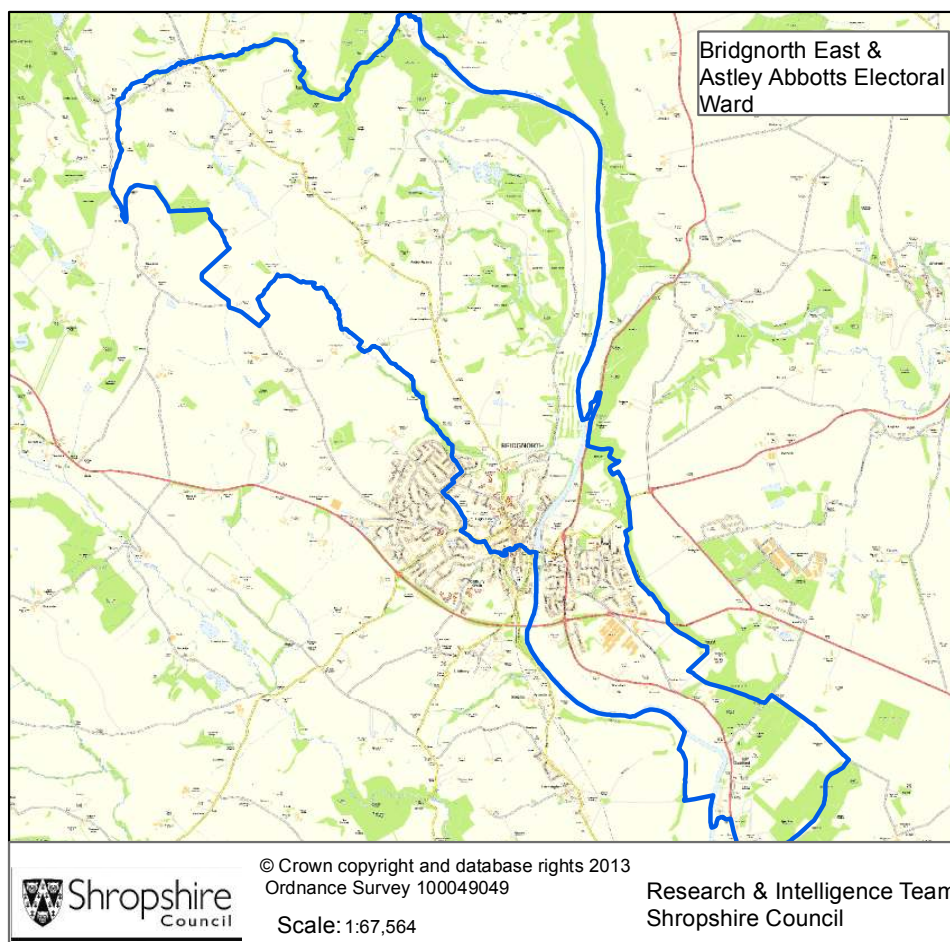


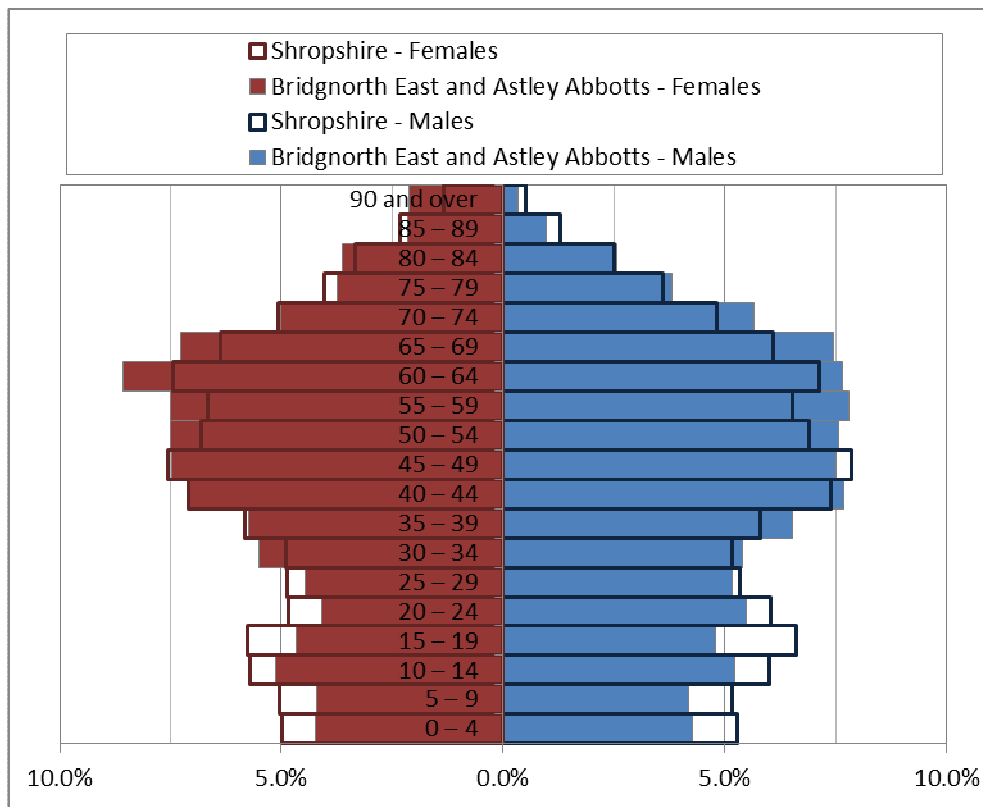
## Bridgnorth East and Astley Abbots



Key Facts:	Bridgnorth East and Astley Abbots Ward
Area:	1929.7 hectares (28th smallest Shropshire ward)
Population Density:	3.43 persons per hectare (37th least densely populated ward)
Total Population	6,614 (3,252 males, 3,362 females)
Average Age	47 years
Household Population:	6,486 (98.1%)
Households: Dwellings:	3,012 3,166
Communal Establishment no. / population	14 Communal Establishments 128 residents (1.9% of total population)

Source: 2011 Census, Office for National Statistics, © Crown Copyright 2014. Please note: Ward boundary changes in 2009 mean it is not possible to compare back over time.

## Population Age Structure



A population pyramid comparing the age structures of Shropshire and Bridgnorth East and Astley Abbots ward

Table: Population by five year age group (2011 Census)

	Total Population	% of Total Population			
		Bridgnorth East and Astley Abbots	Shropshire	West Midlands	England
All ages	6,614	100.0	100.0	100.0	100.0
0 – 4	281	4.2	5.1	6.3	6.3
5 – 9	277	4.2	5.1	5.8	5.6
10 – 14	342	5.2	5.9	6.1	5.8
15 – 19	313	4.7	6.2	6.6	6.3
20 – 24	315	4.8	5.4	6.8	6.8
25 – 29	318	4.8	5.1	6.5	6.9
30 – 34	360	5.4	5.0	6.1	6.6
35 – 39	405	6.1	5.8	6.4	6.7
40 – 44	488	7.4	7.2	7.3	7.3
45 – 49	495	7.5	7.7	7.2	7.3
50 – 54	498	7.5	6.9	6.3	6.4
55 – 59	505	7.6	6.6	5.7	5.7
60 – 64	537	8.1	7.3	6.0	6.0
65 – 69	486	7.3	6.2	5.0	4.7
70 – 74	353	5.3	4.9	4.0	3.9
75 – 79	250	3.8	3.8	3.2	3.1
80 – 84	205	3.1	2.9	2.4	2.4
85 – 89	104	1.6	1.8	1.5	1.5
90 Plus	82	1.2	0.9	0.7	0.8

### Population Age Structure

- Early years: 4.3% (281) of the population were aged 0 to 4 years in March 2011. This compares with 5.1% at County level, 6.3% regionally and 6.3% nationally.
- School age: 12.3% (816) of the population were aged 5 to 17 years in March 2011. This compares with 14.9% at County level, 15.8% regionally and 15.1% nationally.
- Working age: 61.0% (4,037) of the population were aged 18 to 64 years in March 2011. This compares with 59.3% at County level, 61.0% regionally and 62.3% nationally.
- Retirement age: 22.4% (1,480) of the population were aged 65 and over in March 2011. This compares with 20.7% at County level, 16.9% regionally and 16.3% nationally.
- Over 85 year olds: 2.8% (186) of the population were aged 85 and over in March 2011. This compares with 2.7% at County level, 2.2% regionally and 2.2% nationally.

### Diversity

- The 2011 Census showed Bridgnorth East and Astley Abbots ward had a black and minority ethnic group population of 118 (1.78%). The largest broad ethnic group is 'Asian' (within this the largest group is 'Indian'). For the first time, the 2011 Census showed the Ward had a gypsy population of 6.
- When asked about their religion 28.1% (1,857 people) identified themselves as having no religion or did not state it on the form. The majority of people (70.8%) identified themselves as Christian and 1.2% (77 people) identified themselves as having an alternative religion.
- The 2011 Census showed that 3 people could not speak English well and 1 person could not speak English at all.

### Car Ownership

- The 2011 Census showed that 501 households (16.6%) did not own a car and subsequently are reliant on other forms of transport such as public transport services. In total 4,147 cars were owned by households resident in the Ward.

## Health

### General Health

The 2011 Census asked three questions relating to health and the provision of unpaid care. The questions relate to whether people felt their general health was good, whether they looked after or gave help or support to other family members, friends, neighbours or others and lastly whether their day to day activities were limited because of a health problem or disability.

- At the time of the 2011 Census 45% people in Bridgnorth East and Astley Abbots ward said that they felt they were in 'Very Good Health'. This compares to 46% for Shropshire as a whole.
- Only 2% reported that they were in 'Very Bad Health'. This is slightly higher than the overall result for Shropshire (1%).

### Provision of Unpaid Care

The question asked "do you look after, or give any help or support to family members, friends, neighbours or others because of either; a long term physical or mental ill health/disability? Or because of problems related to old age?"

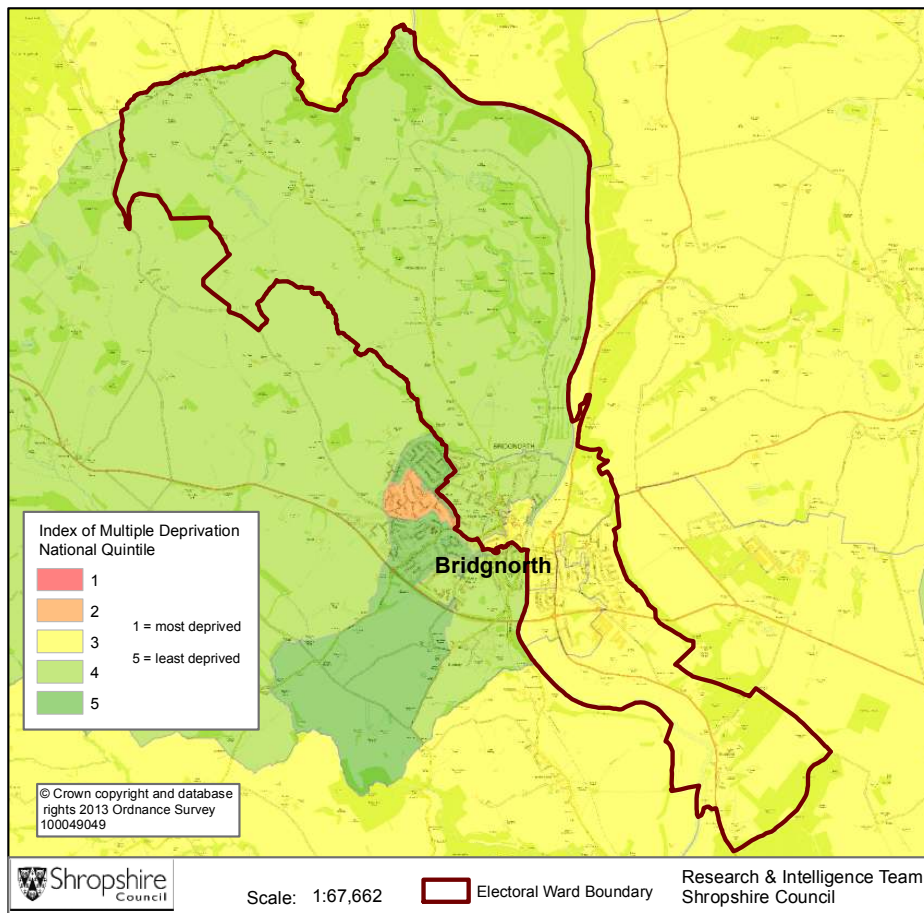
- At the time of the Census 8% said that they were providing 1 to 19 hours of unpaid care a week. This is slightly higher than the Shropshire figure of 7%.
- 1% said they provided between 20 and 49 hours of unpaid care. This is in line with the Shropshire figure of 1%.
- 2% said they provided over 50 hours of unpaid care. This is in line with the figure for Shropshire as a whole (2%) and the figure for England & Wales (2%).

### Long Term Illness or Disability

The Census asked "Are your day-to-day activities limited because of a health problem or disability which has lasted, or is expected to last, at least 12 months?"

- 9% said that their day-to-day activities were limited a lot due to a health problem or disability. This is slightly higher than the figure of 8% for Shropshire as a whole.
- The percentage who reported their day-to-day activities were limited a little was 10%. This is in line with the Shropshire figure of 10%.

## Index of Multiple Deprivation



Bridgnorth East and Astley Abbots Electoral Ward is made up of lower super output areas which fall within the 3<sup>rd</sup> or 4<sup>th</sup> quintile nationally in terms of the Overall Index of Multiple Deprivation.

Quintile 1 is the most deprived nationally and Quintile 5 the least deprived nationally.

*Source: IMD 2010, Department for Communities and Local Government, © Crown Copyright 2014*

## Housing

- There are 3,012 households in Bridgnorth East and Astley Abbots ward.
- The ward has 6,614 usual residents and covers an area of 1930 hectares.
- 1,138 households were owner occupiers (owned outright), this equates to 38% of all households. There were 965 households (32%) who owned their dwelling with a mortgage or loan.
- There were 466 households (15% of all households) privately renting from a landlord. There were also 49 households (2%) privately renting landlords classified as 'Other'.
- 219 households were renting social housing from the Council, totalling 7% of all households. There were also 113 households (4%) renting social housing from 'Other' sources.
- In Bridgnorth East and Astley Abbots ward there were 845 detached dwellings representing 27% of all dwellings. There are also 1,050 semi-detached and 867 terraced dwellings, equating to 33% and 27% respectively.
- 15% (453 household) of all households are one person pensioner households.
- 21.8% of households in the area had dependent children. The number of married couple households with dependent children was 395 and the number of cohabiting couples with dependent children was 108.
- There were 117 lone parent households, which equates to 3.9% of all households.

## **Planning Land Use Monitoring Data 2012-2013**

*Source: Shropshire Council, Planning Land Use Monitoring System, 2014*

### Housing

- During 2012-2013 there were 34 housing completions (gross) within the Bridgnorth East and Astley Abbots Ward. Included in this figure are 3 affordable housing units. During this time 0 dwellings were lost during development.
- At April 2013 there were 82 dwellings with planning permission outstanding, including 7 affordable houses.
- At April 2013, 0 proposed dwellings were part of the current Shropshire Council housing allocations. However, as part of the on-going preparation of the Site Allocations and Management of Development Plan (SAMDev) Plan, the Planning Policy team is now consulting on the 'Revised Preferred Options'.

### Employment

- During 2012-2013, 0.095 hectares of Class B employment land was completed within the Bridgnorth East and Astley Abbot Ward. The total completed gross floor space amounted to 906 square metres.
- At April 2013 there remained 5.245 hectares of Class B employment land outstanding with planning permission and 0.344 hectares of allocated employment land.

### Retail

- A total of 990 net square metres of retail floor space was completed in the Bridgnorth East and Astley Abbots ward during 2012-2013.
- At April 2013, 2,091 net square metres of retail floor space remained outstanding.

### Holiday Lets

- Within the Bridgnorth East and Astley Abbots Ward, 2 holiday lets were completed during 2012-2013.
- At April 2013, 4 holiday let units remain outstanding.

## Unemployment and Labour Market

### Unemployment

- At the time of the Census, there were 147 Bridgnorth East and Astley Abbots residents who were unemployed but available for work. This is 2.9% of the 16-74 year old population, compared to 3.3% for Shropshire.
- 42 young people (aged 16-24) were unemployed, plus a further 33 who were 50 to 74
- Long term unemployment is also an issue – 29.9% of all unemployed people were classed as long-term unemployed in 2011. This is the equivalent of 44 people.

### Labour Force

- 3,551 Bridgnorth East and Astley Abbots residents aged 16-74 are economically active.
- 29.2% of the Bridgnorth East and Astley Abbots population has level 4 or above qualifications compared with 27.5% in Shropshire and 27.4% in England.
- The number with no formal qualifications at all stands at 1345 people – at 23.8% of the population (aged over 16), this compares with the county average of 22.5%.
- 43.8% of the population work in standard occupation classifications 1-3 (managers, directors and senior officials, professional, associate professional and technical) and 17.8% work in standard occupation classifications 8 and 9 (process, plant and machine operatives and elementary occupations)

### Travel to Work (Census 2011)

- 12.6% of the population in Bridgnorth East and Astley Abbots are self-employed, and 4.81% work from home compared with 5.6% for Shropshire.
- The car is used as the main means of travel to work for 47.43%, while 1.54% use public transport.

### Crime and Anti-Social Behaviour

*Source: West Mercia Recorded Statistics, 2014*

- There were 109 crimes in Bridgnorth East and Astley Abbots ward in the period April to July 2013. The majority of these crimes occurred in the categories of theft and handling stolen goods (44.0%) criminal damage (10.1%), domestic burglary (0.0%), burglary other (14.7%), theft from a vehicle (8.3%) and violence against the person with injury (7.3%).
- The majority of crime occurred in the centre of Bridgnorth.
- There were 55 incidents of Anti-Social Behaviour (ASB) in the same period, the majority of these relate to nuisance. The highest number of incidents occurred within the same area experiencing the highest incidence of crime. Youth related ASB accounted for 45.5% of incidents and alcohol related 54.5%.

If you require any further information, or have any other research requests, please contact:

Intelligence & Research Team, Shropshire Council,  
Shirehall, Abbey Foregate, Shrewsbury, Shropshire, SY2 6ND

Email: [research@shropshire.gov.uk](mailto:research@shropshire.gov.uk)

Tel: 01743 252562

Web: [www.shropshire.gov.uk/facts-and-figures](http://www.shropshire.gov.uk/facts-and-figures)

Twitter: @ShropinFocus