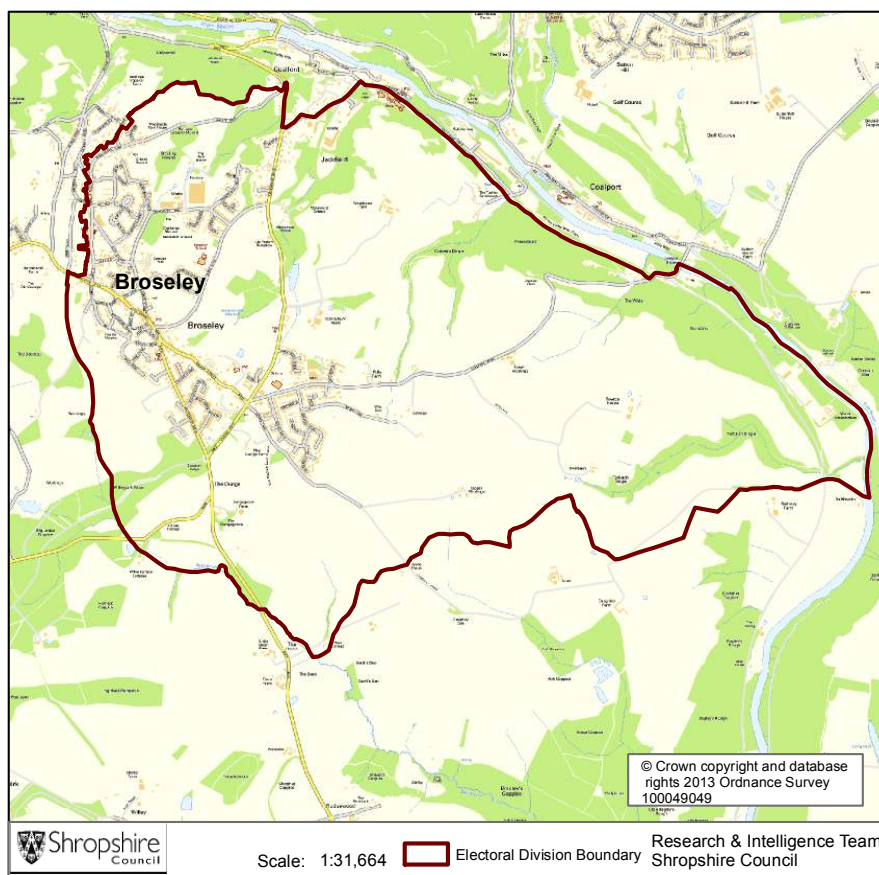


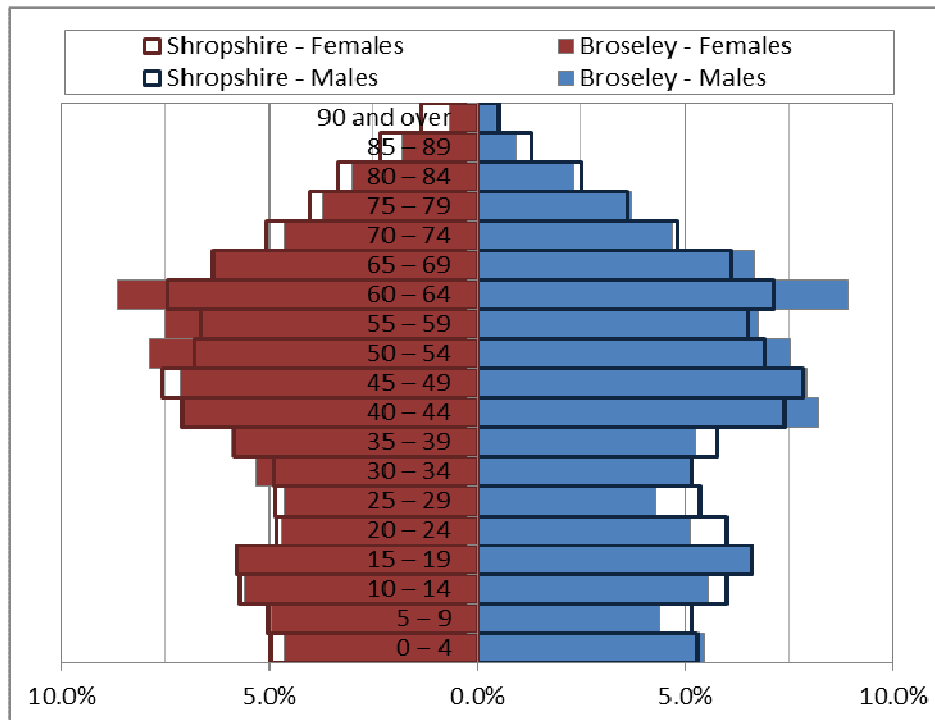
Broseley



Key Facts:	Broseley Ward
Area:	741.1 hectares (23rd smallest Shropshire ward)
Population Density:	6.65 persons per hectare (40th least densely populated ward)
Total Population	4,929 (2416 males, 2513 females)
Average Age	45 years
Household Population:	4,903 (99.5%)
Households: Dwellings:	2,139 2,233
Communal Establishment no. / population	5 Communal Establishments 26 residents (0.5% of total population)

Source: 2011 Census, Office for National Statistics, © Crown Copyright 2014. Please note: Ward boundary changes in 2009 mean it is not possible to compare back over time.

Population Age Structure



A population pyramid comparing the age structures of Shropshire and Broseley ward

Table: Population by five year age group (2011 Census)

	Total Population	% of Total Population			
		Broseley	Shropshire	West Midlands	England
All ages	4,929	100.0	100.0	100.0	100.0
0 – 4	249	5.1	5.1	6.3	6.3
5 – 9	231	4.7	5.1	5.8	5.6
10 – 14	275	5.6	5.9	6.1	5.8
15 – 19	305	6.2	6.2	6.6	6.3
20 – 24	242	4.9	5.4	6.8	6.8
25 – 29	221	4.5	5.1	6.5	6.9
30 – 34	259	5.3	5.0	6.1	6.6
35 – 39	275	5.6	5.8	6.4	6.7
40 – 44	377	7.6	7.2	7.3	7.3
45 – 49	371	7.5	7.7	7.2	7.3
50 – 54	380	7.7	6.9	6.3	6.4
55 – 59	352	7.1	6.6	5.7	5.7
60 – 64	432	8.8	7.3	6.0	6.0
65 – 69	320	6.5	6.2	5.0	4.7
70 – 74	230	4.7	4.9	4.0	3.9
75 – 79	183	3.7	3.8	3.2	3.1
80 – 84	131	2.7	2.9	2.4	2.4
85 – 89	68	1.4	1.8	1.5	1.5
90 Plus	28	0.6	0.9	0.7	0.8

Population Age Structure

- Early years: 5.0% (249) of the population were aged 0 to 4 years in March 2011. This compares with 5.1% at County level, 6.3% regionally and 6.3% nationally.
- School age: 14.4% (708) of the population were aged 5 to 17 years in March 2011. This compares with 14.9% at County level, 15.8% regionally and 15.1% nationally.
- Working age: 61.1% (3,012) of the population were aged 18 to 64 years in March 2011. This compares with 59.3% at County level, 61.0% regionally and 62.3% nationally.
- Retirement age: 19.5% (960) of the population were aged 65 and over in March 2011. This compares with 20.7% at County level, 16.9% regionally and 16.3% nationally.
- Over 85 year olds: 1.9% (96) of the population were aged 85 and over in March 2011. This compares with 2.7% at County level, 2.2% regionally and 2.2% nationally.

Diversity

- The 2011 Census showed Broseley ward had a black and minority ethnic group population of 44 (0.89%). The largest broad ethnic group is 'Mixed' (within this the largest group is 'White and Asian'). For the first time the 2011 Census showed the Ward had a gypsy population of 4.
- When asked about their religion 28.3% (1,396 people) identified themselves as having no religion or did not state it on the form. The majority of people (70.8%) identified themselves as Christian and 0.9% (42 people) identified themselves as having an alternative religion.
- The 2011 Census showed that 5 people could not speak English well and 2 people could not speak English at all.

Car Ownership

- The 2011 Census showed that 334 households (15.6%) did not own a car and subsequently are reliant on other forms of transport such as public transport services. In total 2,981 cars were owned by households resident in the ward.

Health

General Health

The 2011 Census asked three questions relating to health and the provision of unpaid care. The questions relate to whether people felt their general health was good, whether they looked after or gave help or support to other family members, friends, neighbours or others and lastly whether their day to day activities were limited because of a health problem or disability.

- At the time of the 2011 Census 41% people in Broseley ward said that they felt they were in 'Very Good Health'. This compares to 46% for Shropshire as a whole.
- Only 1% reported that they were in 'Very Bad Health'. This is in line with the overall result for Shropshire (1%).

Provision of Unpaid Care

The question asked "do you look after, or give any help or support to family members, friends, neighbours or others because of either; a long term physical or mental ill health/disability? Or because of problems related to old age?"

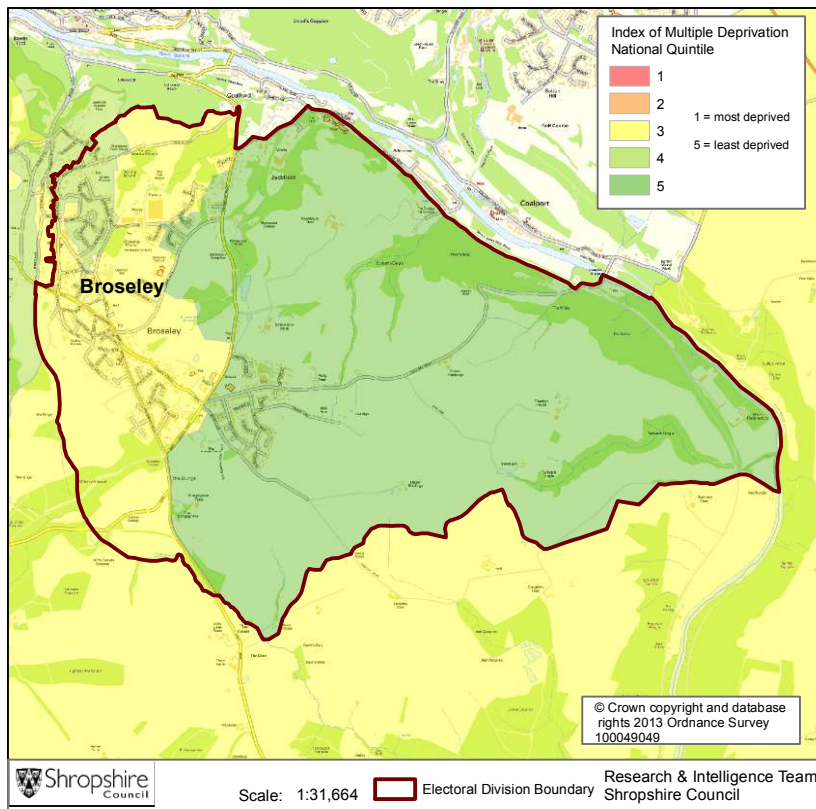
- At the time of the Census 8% said that they were providing 1 to 19 hours of unpaid care a week. This is slightly higher than the Shropshire figure of 7%.
- 2% said they provided between 20 and 49 hours of unpaid care. This compares to 1% for Shropshire as a whole.
- 3% said they provided over 50 hours of unpaid care. This is slightly higher than the figure for Shropshire as a whole (2%) and England & Wales (2%).

Long Term Illness or Disability

The Census asked "Are your day-to-day activities limited because of a health problem or disability which has lasted, or is expected to last, at least 12 months?"

- 11% said that their day-to-day activities were limited a lot due to a health problem or disability. This is higher than the figure of 8% for Shropshire as a whole and that of 9% for England and Wales.
- The percentage who reported their day-to-day activities were limited a little was 11%. This is slightly higher than the figure of 10% for Shropshire as a whole.

Index of Multiple Deprivation



The lower super output areas making up Broseley electoral ward fall within Quintiles 3, 4 and 5 nationally.

Quintile 1 is the most deprived nationally and Quintile 5 the least deprived nationally.

Source: IMD 2010, Department for Communities and Local Government, © Crown Copyright 2014

Housing

- There were 2,139 households in Broseley Ward.
- The ward had 4,929 usual residents and covers an area of 741 hectares.
- 778 households were owner occupiers (owned outright) equating to 36% of all households. There were 666 households (31%) who owned their home with a mortgage or loan.
- There were 210 households (10% of all households) that privately rented their home from a landlord. There were also 30 households (1% of all households) who privately rented from a landlord classified as 'Other'.
- 333 households were renting social housing from the Council totalling 16% of all households. There were also 74 households (3%) renting social housing from 'Other' sources.
- In Broseley Ward there were 767 detached dwellings representing 34% of all dwellings. There were also 850 semi-detached and 394 terraced dwellings, equating to 38% and 18% respectively.
- 13% of all households (288 households) are one person pensioner households.
- 26.9% of households in the area had dependent children. The number of married couple households with dependent children was 320 and the number of cohabiting couples with dependent children was 92.
- There were 134 lone parent households, which equates to 6.3% of all households.

Planning Land Use Monitoring Data 2012-2013

Source: Shropshire Council, Planning Land Use Monitoring System, 2014

Housing

- During 2012-2013 there were 3 housing completions (gross) within the Broseley ward. Included in this figure are 0 affordable housing units. During this time 0 dwellings were lost during development.
- At April 2013 there were 127 dwellings with planning permission outstanding, including 6 affordable houses.
- At April 2013, 0 proposed dwellings were part of the current Shropshire Council housing allocations. However, as part of the on-going preparation of the Site Allocations and Management of Development Plan (SAMDev) Plan, the Planning Policy team is now consulting on the 'Revised Preferred Options'.

Employment

- During 2012-2013, 0 hectares of Class B employment land was completed within the Broseley Ward. The total completed gross floor space amounted to 0 square metres.
- At April 2013 there remained 0 hectares of Class B employment land outstanding with planning permission and 0 hectares of allocated employment land.

Retail

- A total of 80 net square metres of retail floor space was completed in the Broseley ward during 2012-2013.
- At April 2013, 0 net square metres of retail floor space remained outstanding.

Holiday Lets

- Within the Broseley ward, 0 holiday lets were completed during 2012-2013.
- At April 2013, 3 holiday let units remain outstanding.

Unemployment and Labour Market

Unemployment

- At the time of the Census, there were 131 Broseley residents who were unemployed but available for work. This is 3.6% of the 16-74 year old population, compared to 3.3% for Shropshire.
- 34 young people (aged 16-24) were unemployed, plus a further 34 who were 50 to 74.
- Long term unemployment is also an issue – 40.5% of all unemployed people were classed as long-term unemployed in 2011. This is the equivalent of 53 people.

Labour Force

- 2537 Broseley residents aged 16-74 are economically active.
- 22.8% of the Broseley population has level 4 or above qualifications compared with 27.5% in Shropshire and 27.4% in England.
- The number with no formal qualifications at all stands at 1159 people – at 28.3% of the population (aged over 16), this compares with the county average of 22.5%.
- 35.4% of the population work in standard occupation classifications 1-3 (managers, directors and senior officials, professional, associate professional and technical) and 20.2% work in standard occupation classifications 8 and 9 (process, plant and machine operatives and elementary occupations)

Travel to Work (Census 2011)

- 10.1% of the population in Broseley are self-employed, and 3.09% work from home compared with 5.6% for Shropshire.
- The car is used as the main means of travel to work for 51.53%, while 1.6% uses public transport.

Crime and Anti-Social Behaviour April 2013 to July 2013

Source: West Mercia Recorded Statistics, 2014

- There were 49 crimes in Broseley ward in the period April to July 2013. The majority of these crimes occurred in the categories of theft and handling stolen goods (14.3%) criminal damage (18.4%), domestic burglary (14.3%), burglary other (14.3%), theft from a vehicle (4.1%) and violence against the person with injury (14.3%).
- The majority of crime occurred in the town centre.
- There were 16 incidents of Anti-Social Behaviour (ASB) in the same period, the majority of these related to nuisance. The highest number of incidents occurred within the area experiencing the highest incidence of crime. Youth related ASB accounted for 87.5% of incidents and alcohol related 12.5%.

If you require any further information, or have any other research requests, please contact:

Intelligence & Research Team, Shropshire Council,
Shirehall, Abbey Foregate, Shrewsbury, Shropshire, SY2 6ND

Email: research@shropshire.gov.uk

Tel: 01743 252562

Web: www.shropshire.gov.uk/facts-and-figures

Twitter: @ShropinFocus