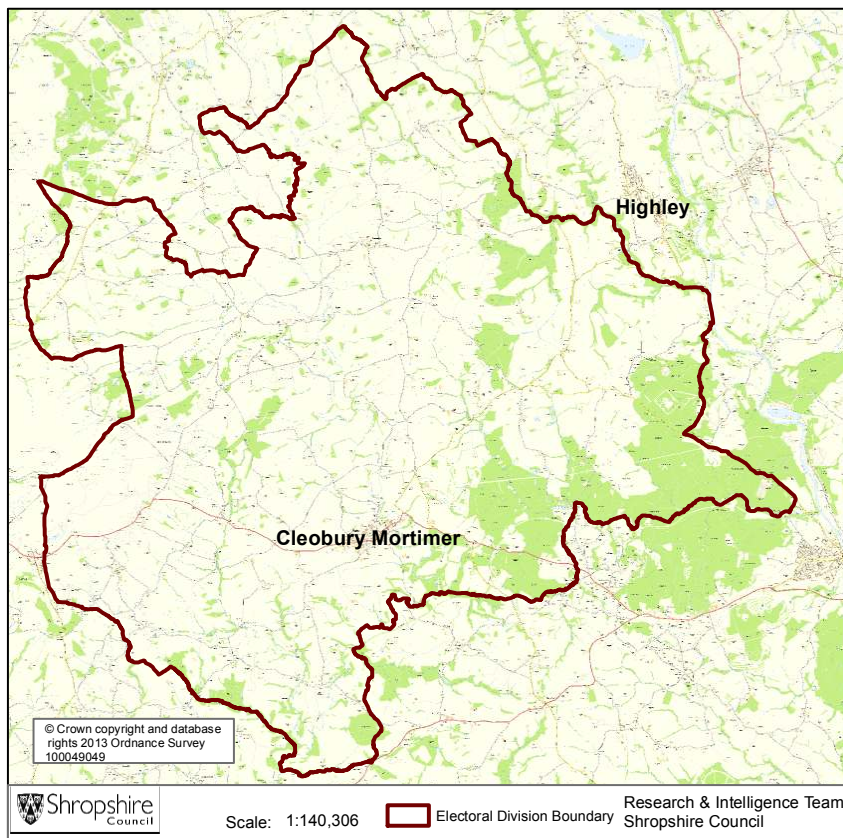


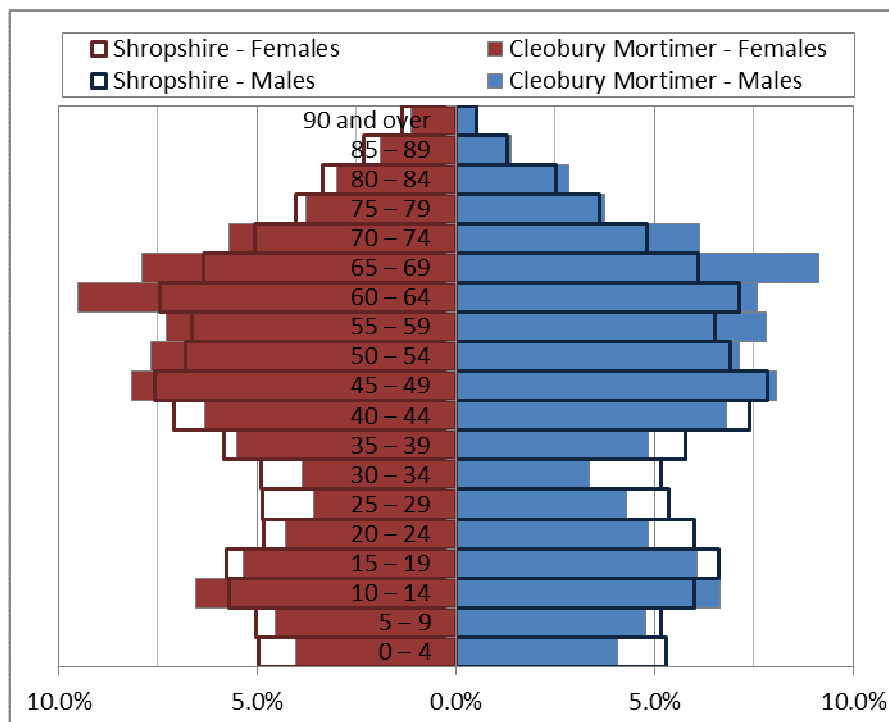
Cleobury Mortimer



Key Facts:	Cleobury Mortimer Ward
Area:	16,589.2 hectares (60th smallest Shropshire ward)
Population Density:	0.44 persons per hectare (11th least densely populated ward)
Total Population	7,226 (3,675 males, 3,551 females)
Average Age	48 years
Household Population:	7,075 (97.9%)
Households: Dwellings:	2,946 3,137
Communal Establishment no. / population	11 Communal Establishments 151 residents (2.1% of total population)

Source: 2011 Census, Office for National Statistics, © Crown Copyright 2014. Please note: Ward boundary changes in 2009 mean it is not possible to compare back over time.

Population Age Structure



A population pyramid comparing the age structures of Shropshire and Cleobury Mortimer ward

Table: Population by five year age group (2011 Census)

	Total Population	% of Total Population			
		Cleobury Mortimer	Shropshire	West Midlands	England
All ages	7,226	100.0	100.0	100.0	100.0
0 – 4	293	4.1	5.1	6.3	6.3
5 – 9	336	4.6	5.1	5.8	5.6
10 – 14	476	6.6	5.9	6.1	5.8
15 – 19	413	5.7	6.2	6.6	6.3
20 – 24	330	4.6	5.4	6.8	6.8
25 – 29	285	3.9	5.1	6.5	6.9
30 – 34	260	3.6	5.0	6.1	6.6
35 – 39	374	5.2	5.8	6.4	6.7
40 – 44	474	6.6	7.2	7.3	7.3
45 – 49	586	8.1	7.7	7.2	7.3
50 – 54	534	7.4	6.9	6.3	6.4
55 – 59	546	7.6	6.6	5.7	5.7
60 – 64	617	8.5	7.3	6.0	6.0
65 – 69	615	8.5	6.2	5.0	4.7
70 – 74	428	5.9	4.9	4.0	3.9
75 – 79	271	3.8	3.8	3.2	3.1
80 – 84	210	2.9	2.9	2.4	2.4
85 – 89	118	1.6	1.8	1.5	1.5
90 Plus	60	0.8	0.9	0.7	0.8

Population Age Structure

- Early years: 4.0% (293) of the population were aged 0 to 4 years in March 2011. This compares with 5.1% at County level, 6.3% regionally and 6.3% nationally.
- School age: 14.9% (1,080) of the population were aged 5 to 17 years in March 2011. This compares with 14.9% at County level, 15.8% regionally and 15.1% nationally.
- Working age: 57.4% (4,151) of the population were aged 18 to 64 years in March 2011. This compares with 59.3% at County level, 61.0% regionally and 62.3% nationally.
- Retirement age: 23.6% (1,702) of the population were aged 65 and over in March 2011. This compares with 20.7% at County level, 16.9% regionally and 16.3% nationally.
- Over 85 year olds: 2.5% (178) of the population were aged 85 and over in March 2011. This compares with 2.7% at County level, 2.2% regionally and 2.2% nationally.

Diversity

- The 2011 Census showed Cleobury Mortimer ward had a black and minority ethnic group population of 104 (1.44%). The largest broad ethnic group is 'Asian' (within this the largest group is 'Other Asian'). For the first time the 2011 Census showed the Ward has a gypsy population of 2.
- When asked about their religion 27.9% (2017 people) identified themselves as having no religion or did not state it on the form. The majority of people (71.0%) identified themselves as Christian and 1.1% (78 people) identified themselves as having an alternative religion.
- The 2011 Census showed that 15 people could not speak English well and 1 person could not speak English at all.

Car Ownership

- The 2011 Census showed that 242 households (8.2%) did not own a car and subsequently are reliant on other forms of transport such as public transport services. In total 5,076 cars were owned by households resident in the ward.

Health

General Health

The 2011 Census asked three questions relating to health and the provision of unpaid care. The questions relate to whether people felt their general health was good, whether they looked after or gave help or support to other family members, friends, neighbours or others and lastly whether their day to day activities were limited because of a health problem or disability.

- At the time of the 2011 Census 46% people in Cleobury Mortimer ward said that they felt they were in “Very Good Health”, this compares to 46% for Shropshire as a whole.
- Only 1% reported that they were in “Very Bad Health”, this is in line with the overall result for Shropshire (1%).

Provision of Unpaid Care

The question asked “do you look after, or give any help or support to family members, friends, neighbours or others because of either; a long term physical or mental ill health/disability? Or because of problems related to old age?”

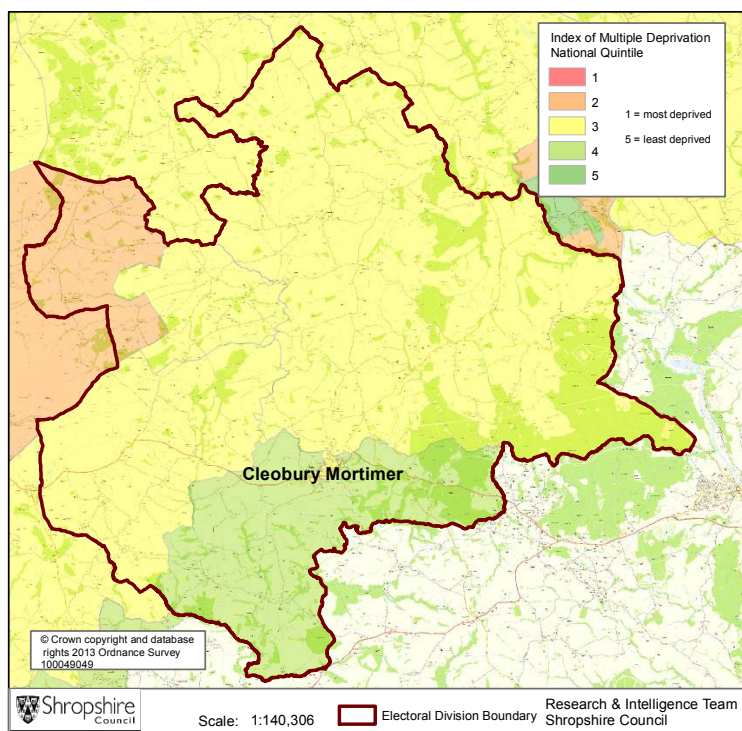
- At the time of the Census 8% said that they were providing 1 to 19 hours of unpaid care a week. This is slightly higher than the Shropshire figure of 7%.
- 2% said they provided between 20 and 49 hours of unpaid care. This compares to 1% for Shropshire as a whole.
- 3% said they provided over 50 hours of unpaid care. This is slightly higher than the figure for Shropshire as a whole (2%) and England & Wales (2%).

Long Term Illness or Disability

The Census asked “Are your day-to-day activities limited because of a health problem or disability which has lasted, or is expected to last, at least 12 months?”

- 9% said that their day-to-day activities were limited a lot due to a health problem or disability. This is slightly higher than the figure of 8% for Shropshire as a whole.
- The percentage who reported their day-to-day activities were limited a little was 10%. This is in line with the Shropshire figure of 10%.

Index of Multiple Deprivation



The lower super output areas making up Cleobury Mortimer electoral ward fall within Quintiles 3 and 4 nationally.

Quintile 1 is the most deprived nationally and Quintile 5 the least deprived nationally.

Source: IMD 2010, Department for Communities and Local Government, © Crown Copyright 2014

Housing

- There are 2,946 households in Cleobury Mortimer ward.
- The ward has 7,226 usual residents and covers an area of 16,589 hectares.
- 1,387 households were owner occupiers (owned outright), equating to 47% of all households. There were 803 households who owned their home with a mortgage or loan, as a percentage that totals 27%.
- 368 or 12% of all households were privately renting from a landlord. There were also 38 households (1%) renting privately from landlords classified as 'Other'.
- 45 households were renting social housing from the Council, totalling 2% of all households. There were also 218 households (7% of all households) renting social housing from 'Other' sources.
- In Cleobury Mortimer ward there were 1,637 detached dwellings, or 52% of all dwellings. There were also 748 semi-detached and 314 terraced dwellings, equating to 24% and 10% respectively.
- 11% of all households were one person pensioner households. This equates to 334 households.
- 26.0% of households in the area had dependent children. The number of married couple households with dependent children was 452 and the number of cohabiting couples with dependent children was 112.
- There were 129 lone parent households, which equates to 4.4% of all households.

Planning Land Use Monitoring Data 2012-2013

Source: Shropshire Council, Planning Land Use Monitoring System, 2014

Housing

- During 2012-2013 there were 46 housing completions (gross) within the Cleobury Mortimer ward. Included in this figure is 1 affordable housing unit. During this time 1 dwelling was lost during development.
- At April 2013 there were 102 dwellings with planning permission outstanding, including 11 affordable houses.
- At April 2013, 0 proposed dwellings were part of the current Shropshire Council housing allocations. However, as part of the on-going preparation of the Site Allocations and Management of Development Plan (SAMDev) Plan, the Planning Policy team is now consulting on the 'Revised Preferred Options'.

Employment

- During 2012-2013, 0.111 hectares of Class B employment land was completed within the Cleobury Mortimer ward. The total completed gross floor space amounted to 250 square metres.
- At April 2013 there remained 0.674 hectares of Class B employment land outstanding with planning permission and 0 hectares of allocated employment land.

Retail

- A total of 28 net square metres of retail floor space was completed in the Cleobury Mortimer ward during 2012-2013.
- At April 2013, 396 net square metres of retail floor space remained outstanding.

Holiday Lets

- Within the Cleobury Mortimer Ward, 2 holiday lets were completed during 2012-2013.
- At April 2013, 61 holiday let units remain outstanding

Unemployment and Labour Market

Unemployment

- At the time of the Census, there were 113 Cleobury Mortimer residents who were unemployed but available for work. This is 2.1% of the 16-74 year old population, compared to 3.3% for Shropshire.
- 26 young people (aged 16-24) were unemployed, plus a further 30 who were 50 to 74.
- Long term unemployment is also an issue – 41.6% of all unemployed people were classed as long-term unemployed in 2011. This is the equivalent of 47 people.

Labour Force

- 3665 Cleobury Mortimer residents aged 16-74 are economically active.
- 26.5% of the Cleobury Mortimer population has level 4 or above qualifications compared with 27.5% in Shropshire and 27.4% in England.
- The number with no formal qualifications at all stands at 1512 people – at 25.1% of the population (aged over 16), this compares with the county average of 22.5%.
- 40.2% of the population work in standard occupation classifications 1-3 (managers, directors and senior officials, professional, associate professional and technical) and 17.6% work in standard occupation classifications 8 and 9 (process, plant and machine operatives and elementary occupations)

Travel to Work (Census 2011)

- 17.6% of the population in Cleobury Mortimer are self-employed, and 9.32% work from home compared with 5.6% for Shropshire.
- The car is used as the main means of travel to work for 47.56%, while 1.49% use public transport.

Crime and Anti-Social Behaviour April to July 2013

Source: West Mercia Recorded Statistics, 2014

- There were 51 crimes in Cleobury Mortimer ward in the period April to July 2013. The majority of these crimes occurred in the categories of theft and handling stolen goods (19.6%) criminal damage (11.8%), domestic burglary (3.9%), burglary other (13.7%), theft from a vehicle (9.8%) and violence against the person with injury (13.7%).
- The majority of crime occurred in the centre of Cleobury Mortimer.
- There were 11 incidents of Anti-Social Behaviour (ASB) in the same period, the majority of these relate to nuisance. The highest number of incidents occurred in the area experiencing the highest incidence of crime. Youth related ASB accounted for 81.8% of incidents and alcohol related 18.2%.

If you require any further information, or have any other research requests, please contact:

Intelligence & Research Team, Shropshire Council,
Shirehall, Abbey Foregate, Shrewsbury, Shropshire, SY2 6ND

Email: research@shropshire.gov.uk

Tel: 01743 252562

Web: www.shropshire.gov.uk/facts-and-figures

Twitter: @ShropinFocus