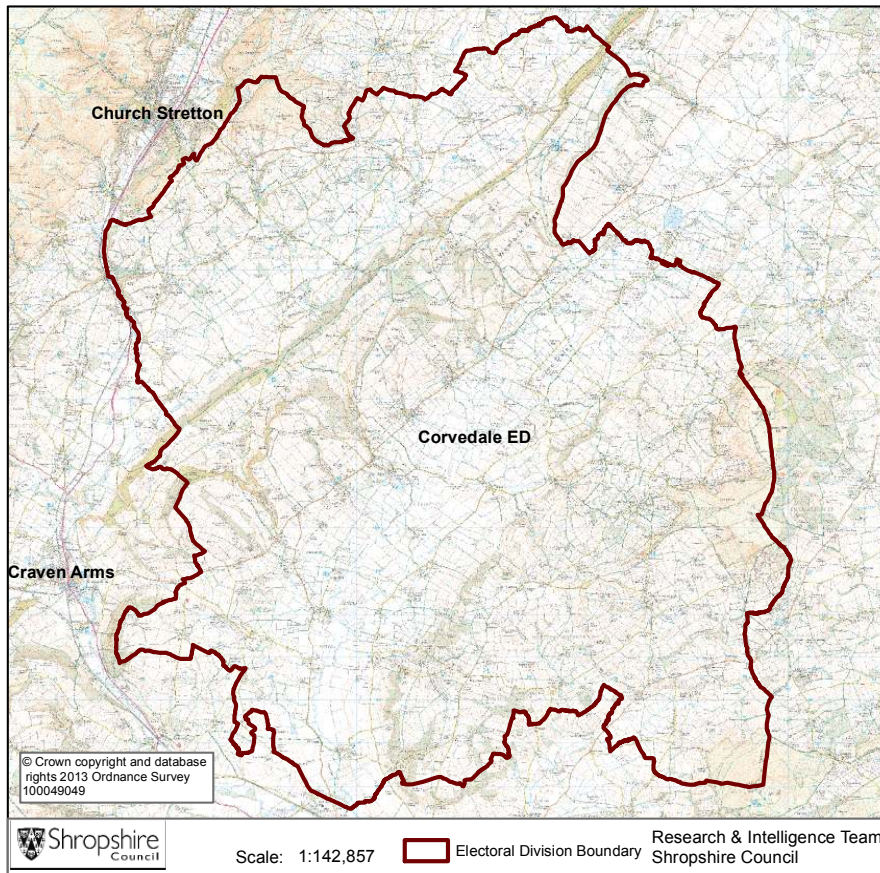


Corvedale



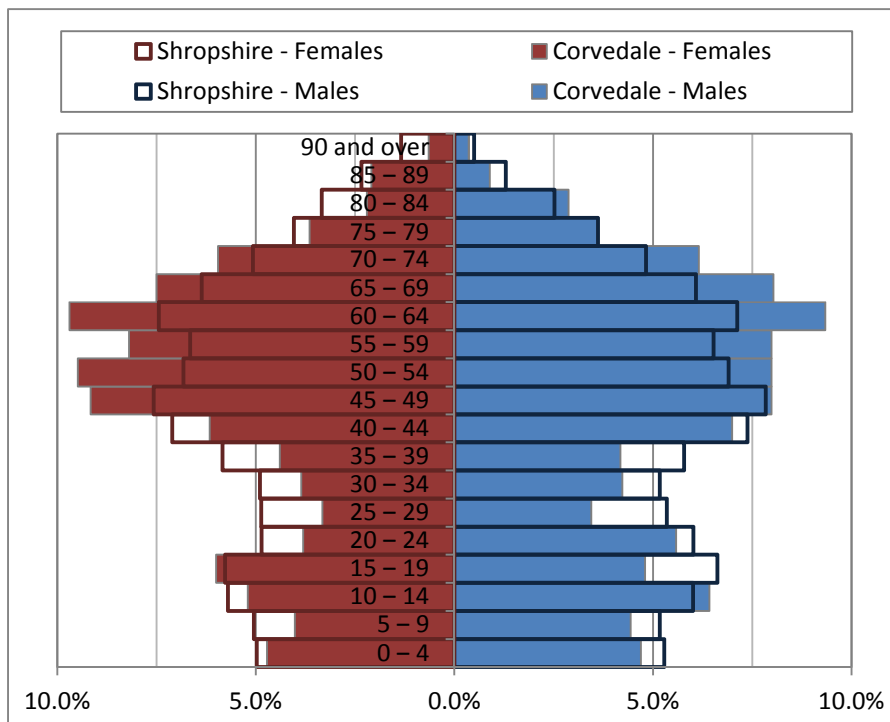
Population

Key Facts:	Corvedale Ward
Area:	19952.0 hectares (62nd smallest Shropshire ward)
Population Density:	0.19 persons per hectare (2nd least densely populated ward)
Total Population	3783 (1916 males, 1867 females)
Average Age	49 years
Household Population:	3746 (99.0%)
Households: Dwellings:	1544 1670
Communal Establishment no. / population	7 Communal Establishments 37 residents (1.0% of total population)

Source: 2011 Census, Office for National Statistics, © Crown Copyright 2014.

Please note: Ward boundary changes in 2009 mean it is not possible to compare over time.

Population Age Structure



A population pyramid comparing the age structures of Shropshire and Corvedale Ward

Table: Population by five year age group (2011 Census)

	Total Population	% of Total Population			
		Corvedale	Shropshire	West Midlands	England
All ages	3783	100.0	100.0	100.0	100.0
0 – 4	178	4.7	5.1	6.3	6.3
5 – 9	160	4.2	5.1	5.8	5.6
10 – 14	220	5.8	5.9	6.1	5.8
15 – 19	204	5.4	6.2	6.6	6.3
20 – 24	178	4.7	5.4	6.8	6.8
25 – 29	128	3.4	5.1	6.5	6.9
30 – 34	153	4.0	5.0	6.1	6.6
35 – 39	162	4.3	5.8	6.4	6.7
40 – 44	249	6.6	7.2	7.3	7.3
45 – 49	324	8.6	7.7	7.2	7.3
50 – 54	330	8.7	6.9	6.3	6.4
55 – 59	306	8.1	6.6	5.7	5.7
60 – 64	360	9.5	7.3	6.0	6.0
65 – 69	294	7.8	6.2	5.0	4.7
70 – 74	229	6.1	4.9	4.0	3.9
75 – 79	137	3.6	3.8	3.2	3.1
80 – 84	96	2.5	2.9	2.4	2.4
85 – 89	56	1.5	1.8	1.5	1.5
90 Plus	19	0.5	0.9	0.7	0.8

Population Age Structure

- Early years: 4.7% (178) of the population were aged 0 to 4 years in March 2011. This compares with 5.1% at County level, 6.3% regionally and 6.3% nationally.
- School age: 13.1% (496) of the population were aged 5 to 17 years in March 2011. This compares with 14.9% at County level, 15.8% regionally and 15.1% nationally.
- Working age: 60.2% (2278) of the population were aged 18 to 64 years in March 2011. This compares with 59.3% at County level, 61.0% regionally and 62.3% nationally.
- Retirement age: 22.0% (831) of the population were aged 65 and over in March 2011. This compares with 20.7% at County level, 16.9% regionally and 16.3% nationally.
- Over 85 year olds: 2.0% (75) of the population were aged 85 and over in March 2011. This compares with 2.7% at County level, 2.2% regionally and 2.2% nationally.

Diversity

- The 2011 Census showed Corvedale ward had a black and minority ethnic group population of 35 (0.93%). The largest broad ethnic group is 'Asian' (within this the largest group is 'Indian').
- When asked about their religion 29.9% (1130 people) identified themselves as having no religion or did not state it on the form. The majority of people (69.0%) identified themselves as Christian and 1.2% (44 people) identified themselves as having an alternative religion.
- The 2011 Census showed that 0 people could not speak English well and 0 people could not speak English at all.

Car Ownership

- The 2011 Census showed that 76 households (4.9%) did not own a car and subsequently are reliant on other forms of transport such as public services. In total 2985 cars are owned by households resident in the ward.

Health

General Health

The 2011 Census asked three questions relating to health and the provision of unpaid care. The questions relate to whether people felt their general health was good, whether they looked after or gave help or support to other family members, friends, neighbours or others and lastly whether their day to day activities were limited because of a health problem or disability.

- At the time of the 2011 Census 47% people in Corvedale Ward said that they felt they were in “Very Good Health” this compares to 46% for Shropshire as a whole.
- Only 1% reported that they were in “Very Bad Health” this is in line with the overall result for Shropshire (1%).

Provision of Unpaid Care

The question asked “do you look after, or give any help or support to family members, friends, neighbours or others because of either; a long term physical or mental ill health/disability? or because of problems related to old age?”

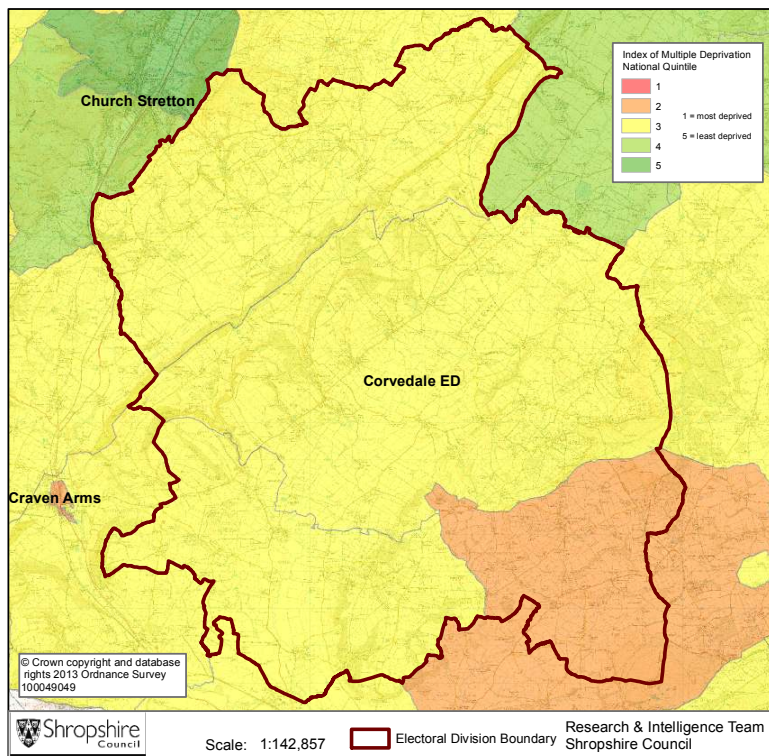
- At the time of the Census 9% said that they were providing 1 to 19 hours of unpaid care a week. This is slightly higher than the Shropshire figure of 7%.
- 1% said they provided between 20 and 49 hours of unpaid care. This is in line with the Shropshire figure of 1%.
- 3% said they provided over 50 hours of unpaid care. This is slightly higher than the figure for Shropshire as a whole (2%) and England & Wales (2%).

Long Term Illness or Disability

The Census asked “Are your day-to-day activities limited because of a health problem or disability which has lasted, or is expected to last, at least 12 months?”

- 6% said that their day-to-day activities were limited a lot due to a health problem or disability. This is less than the figure for Shropshire as a whole (8%)
- The percentage who reported their day-to-day activities were limited a little was 11%. This is slightly higher than the figure of 10% for Shropshire as a whole.

Index of Multiple Deprivation



The lower super output areas making up Corvedale Ward fall within 2 different quintiles nationally.

Source: IMD 2010, Department for Communities and Local Government, © Crown Copyright 2014

Housing

- There were 1544 households in Corvedale Ward.
- The ward had 3783 usual residents and covers an area of 19952 hectares.
- 730 households were owner occupiers (owned outright) equating to 47% of all households. There were 348 households (23%) who owned their home with a mortgage or loan.
- There were 261 households (17% of all households) that privately rented their home from a landlord. There were also 29 households (2% of all households) who privately rented from a landlord classified as 'Other'.
- 8 households were renting social housing from the Council totalling 1% of all households. There were also 88 households (6%) renting social housing from 'Other' sources.
- In Corvedale Ward there were 1150 detached dwellings representing 69% of all dwellings. There were also 371 semi-detached and 84 terraced dwellings equating to 22% and 5% respectively.
- 10% of all households (159 households) were one person pensioner households.
- 24.2% of households in the area had dependent children. The number of married couple households with dependent children was 242 and the number of cohabiting couples with dependent children was 53.
- There were 47 lone parent households, which equates to 3.0% of all households.

Planning Land Use Monitoring Data 2012-2013

Source: Shropshire Council, Planning Land Use Monitoring System, 2014

Housing

- During 2012-2013 there were 5 housing completions (gross) within the Corvedale Ward. Included in this figure are 2 affordable housing units. During this time 0 dwellings were lost during development.
- At April 2013 there were 45 dwellings with planning permission outstanding, including 7 affordable houses.
- At April 2013, 0 proposed dwellings were part of the current Shropshire Council housing allocations. However, as part of the on-going preparation of the Site Allocations and Management of Development Plan (SAMDev) Plan, the Planning Policy team is now consulting on the 'Revised Preferred Options'.

Employment

- During 2012-2013, 0 hectares of Class B employment land was completed within the Corvedale Ward. The total completed gross floor space amounted to 0 square metres.
- At April 2013 there remained 0.036 hectares of Class B employment land outstanding with planning permission and 0 hectares of allocated employment land.

Retail

- A total of 0 net square metres of retail floor space was completed in the Corvedale Ward during 2012-2013.
- At April 2013, 32 net square metres of retail floor space remain outstanding.

Holiday Lets

- Within the Corvedale Ward, 4 holiday lets were completed during 2012-2013.
- At April 2013, 22 holiday let units remain outstanding.

Unemployment and Labour Market

Unemployment

- At the time of the Census, there were 67 Corvedale residents who were unemployed but available for work. This is 2.3% of the 16-74 year old population, compared to 3.3% for Shropshire.
- 18 young people (aged 16-24) were unemployed, plus a further 23 who were 50 to 74.
- Long term unemployment is also an issue – 41.8% of all unemployed people were classed as long-term unemployed in 2011. This is the equivalent of 28 people.

Labour Force

- 2045 Corvedale residents aged 16-74 are economically active.
- 34.8% of the Corvedale population has level 4 or above qualifications compared with 27.5% in Shropshire and 27.4% in England.
- The number with no formal qualifications at all stands at 594 people – at 18.7% of the population (aged over 16), this compares with the county average of 22.5%.
- 41.6% of the population work in standard occupation classifications 1-3 (managers, directors and senior officials, professional, associate professional and technical) and 13.9% work in standard occupation classifications 8 and 9 (process, plant and machine operatives and elementary occupations)

Travel to Work (Census 2011)

- 25.5% of the population in Corvedale are self-employed, and 13.4% work from home compared with 5.6% for Shropshire.
- The car is used as the main means of travel to work for 45.3%, while 1.15% use public transport.

Crime and Anti-Social Behaviour April to July 2013

Source: West Mercia Recorded Statistics, 2014

- There were 26 crimes in Corvedale ED ward area in the period April to July 2013. The majority of these crimes occurred in the categories of theft and handling stolen goods (26.9%) criminal damage (7.7%), domestic burglary (7.7%), burglary other (19.2%), theft from a vehicle (7.7%) and violence against the person with injury (11.5%).
- There was 1 incident of Anti-Social Behaviour (ASB) in the same period, which related to nuisance and was alcohol related.

If you require any further information, or have any other research requests, please contact:

Intelligence & Research Team,
Shropshire Council,
Shirehall,
Abbey Foregate,
Shrewsbury,
Shropshire
SY2 6ND

Tel: 01743 252562
Email: research@shropshire.gov.uk
Web: www.shropshire.gov.uk/facts-and-figures
Twitter: @ShropinFocus