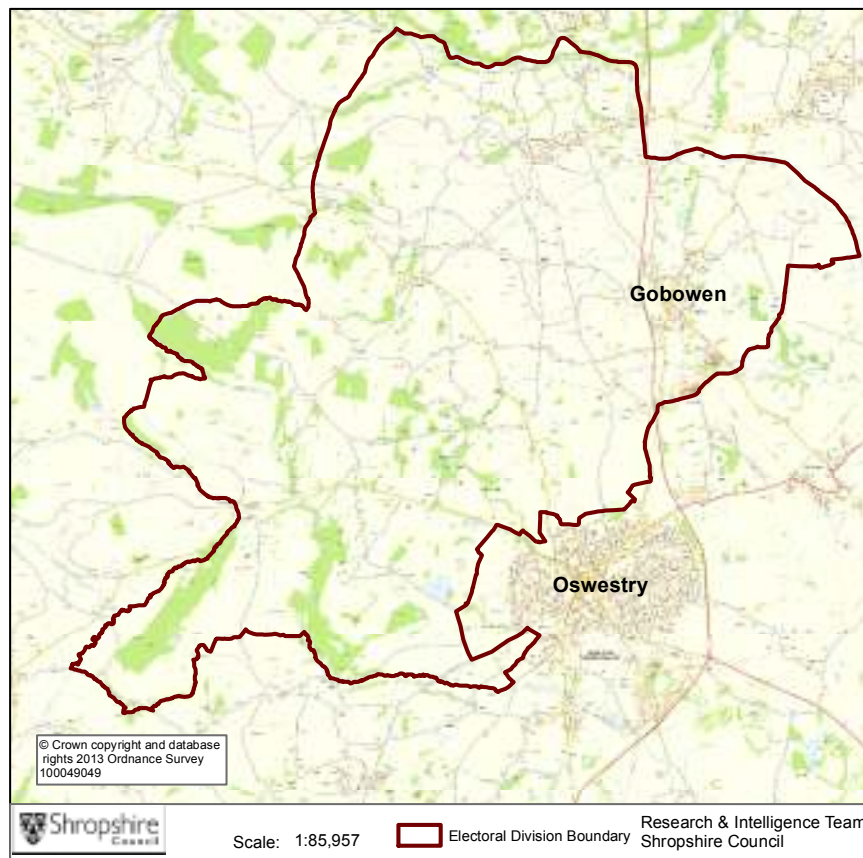


## Gobowen, Selattyn and Weston Rhyn

Profile Updated September 2013

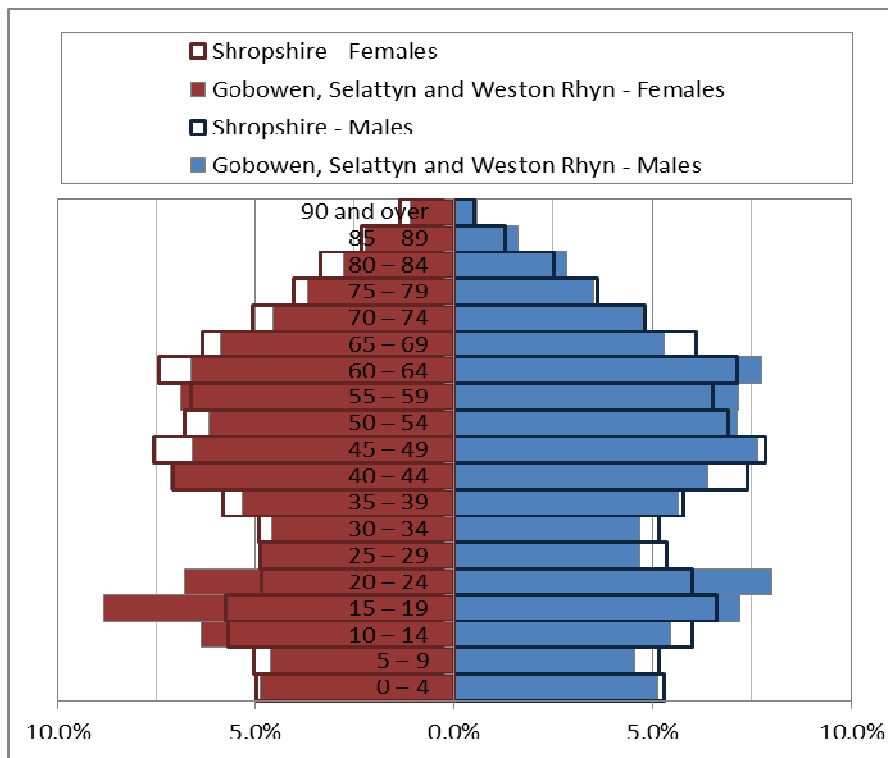


### Population

| Key Facts:                              | Gobowen, Selattyn and Weston Rhyn Ward                                 |
|---|--|
| Area:                                   | 4,224.8 hectares (35th smallest Shropshire ward)                       |
| Population Density:                     | 1.63 persons per hectare (35th least densely populated ward)           |
| Total Population                        | 6,866 (3291 males, 3,575 females)                                      |
| Average Age                             | 43 years   |
| Household Population:                   | 6,264 (91.2%)  |
| Households:<br>Dwellings:               | 2,672<br>2,803   |
| Communal Establishment no. / population | 13 Communal Establishments<br>602 residents (8.8% of total population) |

Source: 2011 Census, Office for National Statistics, © Crown Copyright 2014.  
Please note: Ward boundary changes in 2009 mean it is not possible to compare over time.

## Population Age Structure



A population pyramid comparing the age structures of Shropshire and Gobowen, Selattyn and Weston Rhyn Ward

Table: Population by five year age group (2011 Census)

|          | Total Population | % of Total Population             |            |               |         |
|----------|------------------|-----------------------------------|------------|---------------|---------|
|          |                  | Gobowen, Selattyn and Weston Rhyn | Shropshire | West Midlands | England |
| All ages | 6,866            | 100.0                             | 100.0      | 100.0         | 100.0   |
| 0 – 4    | 343              | 5.0                               | 5.1        | 6.3           | 6.3     |
| 5 – 9    | 315              | 4.6                               | 5.1        | 5.8           | 5.6     |
| 10 – 14  | 407              | 5.9                               | 5.9        | 6.1           | 5.8     |
| 15 – 19  | 553              | 8.1                               | 6.2        | 6.6           | 6.3     |
| 20 – 24  | 506              | 7.4                               | 5.4        | 6.8           | 6.8     |
| 25 – 29  | 329              | 4.8                               | 5.1        | 6.5           | 6.9     |
| 30 – 34  | 318              | 4.6                               | 5.0        | 6.1           | 6.6     |
| 35 – 39  | 376              | 5.5                               | 5.8        | 6.4           | 6.7     |
| 40 – 44  | 466              | 6.8                               | 7.2        | 7.3           | 7.3     |
| 45 – 49  | 488              | 7.1                               | 7.7        | 7.2           | 7.3     |
| 50 – 54  | 456              | 6.6                               | 6.9        | 6.3           | 6.4     |
| 55 – 59  | 483              | 7.0                               | 6.6        | 5.7           | 5.7     |
| 60 – 64  | 493              | 7.2                               | 7.3        | 6.0           | 6.0     |
| 65 – 69  | 385              | 5.6                               | 6.2        | 5.0           | 4.7     |
| 70 – 74  | 318              | 4.6                               | 4.9        | 4.0           | 3.9     |
| 75 – 79  | 247              | 3.6                               | 3.8        | 3.2           | 3.1     |
| 80 – 84  | 192              | 2.8                               | 2.9        | 2.4           | 2.4     |
| 85 – 89  | 133              | 1.9                               | 1.8        | 1.5           | 1.5     |
| 90 Plus  | 58               | 0.8                               | 0.9        | 0.7           | 0.8     |

### Population Age Structure

- Early years: 5.0% (343) of the population were aged 0 to 4 years in March 2011. This compares with 5.1% at County level, 6.3% regionally and 6.3% nationally.
- School age: 15.6% (1,068) of the population were aged 5 to 17 years in March 2011. This compares with 14.9% at County level, 15.8% regionally and 15.1% nationally.
- Working age: 60.0% (4,122) of the population were aged 18 to 64 years in March 2011. This compares with 59.3% at County level, 61.0% regionally and 62.3% nationally.
- Retirement age: 19.4% (1333) of the population were aged 65 and over in March 2011. This compares with 20.7% at County level, 16.9% regionally and 16.3% nationally.
- Over 85 year olds: 2.8% (191) of the population were aged 85 and over in March 2011. This compares with 2.7% at County level, 2.2% regionally and 2.2% nationally.

### Diversity

- The 2011 Census showed Gobowen, Selattyn and Weston Rhyn ward had a black and minority ethnic group population of 148 (2.16%). The largest broad ethnic group is 'Asian' (within this the largest group is 'Chinese'). For the first time the 2011 Census showed the Ward has a gypsy population of 4.
- When asked about their religion 33.0% (2263 people) identified themselves as having no religion or did not state it on the form. The majority of people (66.1%) identified themselves as Christian and 0.9% (64 people) identified themselves as having an alternative religion.
- The 2011 Census showed that 15 people could not speak English well and 1 person could not speak English at all.

### Car Ownership

- The 2011 Census showed that 429 households (16.1%) did not own a car and subsequently were reliant on other forms of transport such as public transport services. In total 3,851 cars are owned by households resident in the ward

## Health

### General Health

The 2011 Census asked three questions relating to health and the provision of unpaid care. The questions relate to whether people felt their general health was good, whether they looked after or gave help or support to other family members, friends, neighbours or others and lastly whether their day to day activities were limited because of a health problem or disability.

- At the time of the 2011 Census 45% people in Gobowen, Selattyn and Weston Rhyn Ward said that they felt they were in “Very Good Health”. This compares to 46% for Shropshire as a whole.
- Only 2% reported that they were in “Very Bad Health”. This is slightly higher than the overall result for Shropshire (1%).

### Provision of Unpaid Care

The question asked “do you look after, or give any help or support to family members, friends, neighbours or others because of either; a long term physical or mental ill health/disability? Or because of problems related to old age?”

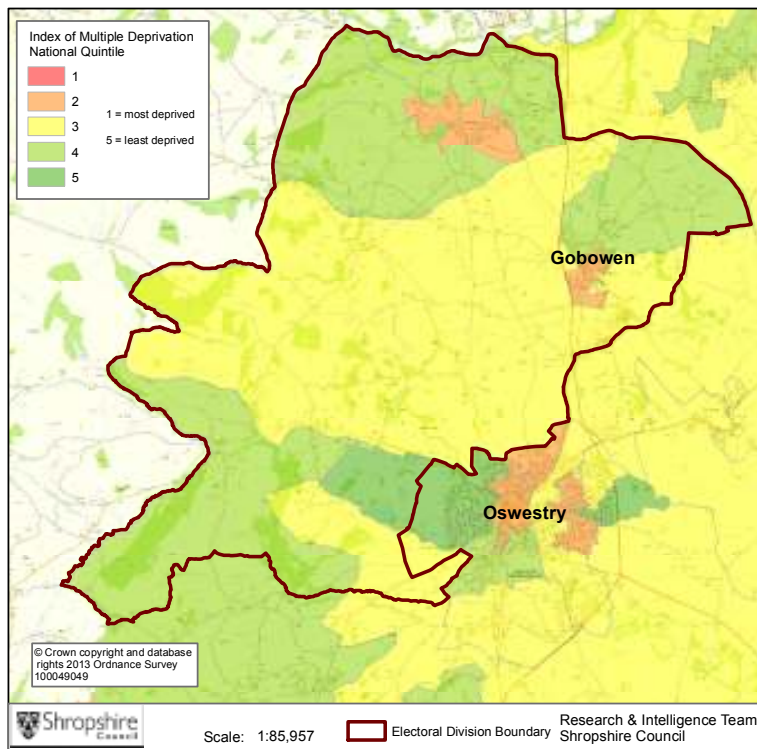
- At the time of the Census 7% said that they were providing 1 to 19 hours of unpaid care a week. This is in line with the Shropshire figure of 7%.
- 2% said they provided between 20 and 49 hours of unpaid care. This compares to 1% for Shropshire as a whole.
- 3% said they provided over 50 hours of unpaid care. This is slightly higher than the figure for Shropshire as a whole (2%) and England & Wales (2%).

### Long Term Illness or Disability

The Census asked “Are your day-to-day activities limited because of a health problem or disability which has lasted, or is expected to last, at least 12 months?”

- 12% said that their day-to-day activities were limited a lot due to a health problem or disability. This is higher than the figure of 8% for Shropshire as a whole and that of 9% for England and Wales.
- The percentage who reported their day-to-day activities were limited a little was 12%. This is slightly higher than the figure of 10% for Shropshire as a whole.

## Index of Multiple Deprivation



The lower super output areas making up Gobowen, Selattyn and Weston Rhyn Ward fall within 4 different quintiles nationally.

## Housing

- There were 2672 households in Gobowen, Selattyn and Weston Rhyn Ward.
- The ward had 6866 usual residents and covers an area of 4225 hectares.
- 1044 households were owner occupiers (owned outright) equating to 39% of all households. There were 864 households (32%) who owned their home with a mortgage or loan.
- There were 219 households (8% of all households) that privately rented their home from a landlord. There were also 28 households (1% of all households) who privately rented from a landlord classified as 'Other'.
- 357 households were renting social housing from the Council totalling 13% of all households. There were also 83 households (3%) renting social housing from 'Other' sources.
- In Gobowen, Selattyn and Weston Rhyn Ward there were 1177 detached dwellings representing 42% of all dwellings. There were also 1061 semi-detached and 377 terraced dwellings equating to 38% and 13% respectively.
- 14% of all households (386 households) were one person pensioner households.
- 26.3% of households in the area had dependent children. The number of married couple households with dependent children was 397 and the number of cohabiting couples with dependent children was 119.
- There were 128 lone parent households, which equates to 4.8% of all households.

## **Planning Land Use Monitoring Data 2012-2013**

### Housing

- During 2012-2013 there were 16 housing completions (gross) within the Gobowen, Selattyn and Weston Rhyn ward. Included in this figure is 1 affordable housing unit. During this time 0 dwellings were lost during development.
- At April 2013 there were 178 dwellings with planning permission outstanding, including 40 affordable houses.
- At April 2013, 95 proposed dwellings were part of the current Shropshire Council housing allocations. However, as part of the on-going preparation of the Site Allocations and Management of Development Plan (SAMDev) Plan, the Planning Policy team is now consulting on the 'Revised Preferred Options'.

### Employment

- During 2012-2013, 0 hectares of Class B employment land were completed within the Gobowen, Selattyn and Weston Rhyn ward. The total completed gross floor space amounted to 0 square metres.
- At April 2013 there remained 0.661 hectares of Class B employment land outstanding with planning permission and 0 hectares of allocated employment land.

### Retail

- A total of 0 net square metres of retail floor space were completed in the Gobowen, Selattyn and Weston Rhyn ward during 2012-2013.
- At April 2013, 236 net square metres of retail floor space remained outstanding.

### Holiday Lets

- Within the Gobowen, Selattyn and Weston Rhyn ward, 4 holiday lets were completed during 2012-2013.
- At April 2013, 14 holiday let units remain outstanding.

## **Unemployment and Labour Market**

### **Unemployment**

- At the time of the Census, there were 195 Gobowen, Selattyn and Weston Rhyn residents who were unemployed but available for work. This is 3.8% of the 16-74 year old population, compared to 3.3% for Shropshire.
- 65 young people (aged 16-24) were unemployed, plus a further 41 who were 50 to 74
- Long term unemployment is also an issue – 33.3% of all unemployed people were classed as long-term unemployed in 2011. This is the equivalent of 65 people.

### **Labour Force**

- 3,318 Gobowen, Selattyn and Weston Rhyn residents aged 16-74 are economically active.
- 23.4% of the Gobowen, Selattyn and Weston Rhyn population has level 4 or above qualifications compared with 27.5% in Shropshire and 27.4% in England.
- The number with no formal qualifications at all stands at 1487 people – at 26.1% of the population (aged over 16), this compares with the county average of 22.5%.
- 35.6% of the population work in standard occupation classifications 1-3 (managers, directors and senior officials, professional, associate professional and technical) and 20.3% work in standard occupation classifications 8 and 9 (process, plant and machine operatives and elementary occupations).

### **Travel to Work (Census 2011)**

- 10.0% of the population in Gobowen, Selattyn and Weston Rhyn are self-employed, and 3.58% work from home compared with 5.6% for Shropshire.
- The car is used as the main means of travel to work for 48.42%, while 2.32% use public transport.

## **Crime and Anti-Social Behaviour April to July 2013**

- There were 61 crimes in Gobowen, Selattyn and Weston Rhyn ward in the period April to July 2013. The majority of these crimes occurred in the categories of theft and handling stolen goods (32.8%) criminal damage (13.1%), domestic burglary (6.6%), burglary other (4.9%), theft from a vehicle (9.8%) and violence against the person with injury (8.2%).
- There were 15 incidents of Anti-Social Behaviour (ASB) in the same period, the majority of these relate to nuisance. The highest number of incidents occurred within the same area experiencing the highest incidence of crime. Youth related ASB accounted for (73.3%) and alcohol related (26.7%).

If you require any further information, or have any other research requests, please contact:

Intelligence & Research Team, Shropshire Council,  
Shirehall, Abbey Foregate,  
Shrewsbury, Shropshire  
SY2 6ND

Tel: 01743 252562

Email: [research@shropshire.gov.uk](mailto:research@shropshire.gov.uk)

Web: [www.shropshire.gov.uk/facts-and-figures](http://www.shropshire.gov.uk/facts-and-figures)

Twitter: @ShropinFocus