

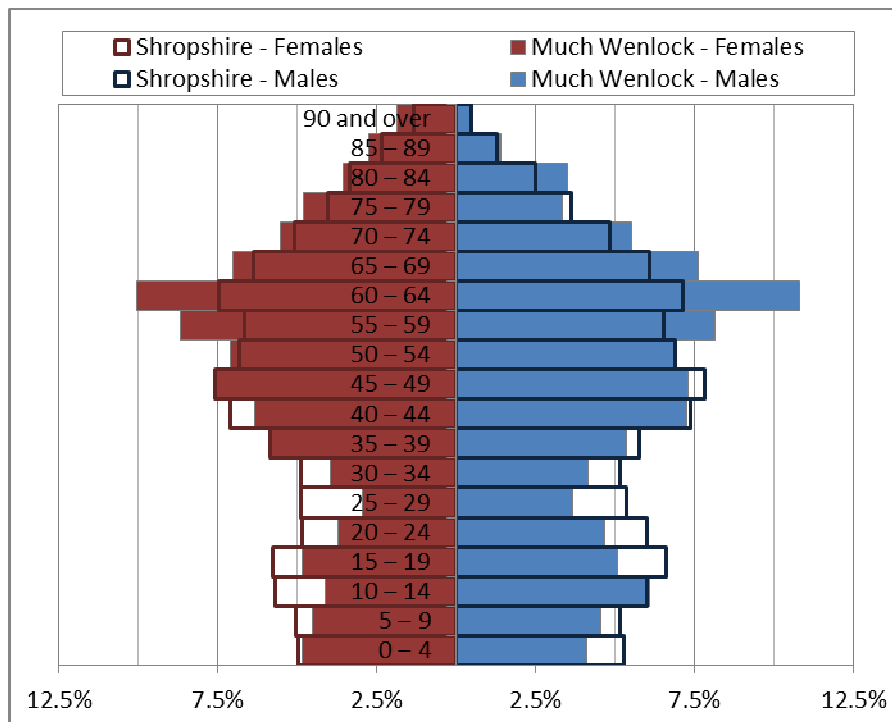
Much Wenlock



Key Facts:	Much Wenlock Ward
Area:	8,213.7 hectares (48th smallest Shropshire ward)
Population Density:	0.49 persons per hectare (14th least densely populated ward)
Total Population	3,988 (1,904 males, 2,084 females)
Average Age	49 years
Household Population:	3,923 (98.4%)
Households: Dwellings:	1,729 1,826
Communal Establishment no. / population	9 Communal Establishments 65 residents (1.6% of total population)

Source: 2011 Census, Office for National Statistics, © Crown Copyright 2014. Please note: Ward boundary changes in 2009 mean it is not possible to compare back over time.

Population Age Structure



A population pyramid comparing the age structures of Shropshire and Much Wenlock ward

Table: Population by five year age group (2011 Census)

	Total Population	% of Total Population			
		Much Wenlock	Shropshire	West Midlands	England
All ages	3,988	100.0	100.0	100.0	100.0
0 – 4	179	4.5	5.1	6.3	6.3
5 – 9	181	4.5	5.1	5.8	5.6
10 – 14	202	5.1	5.9	6.1	5.8
15 – 19	198	5.0	6.2	6.6	6.3
20 – 24	166	4.2	5.4	6.8	6.8
25 – 29	131	3.3	5.1	6.5	6.9
30 – 34	161	4.0	5.0	6.1	6.6
35 – 39	224	5.6	5.8	6.4	6.7
40 – 44	270	6.8	7.2	7.3	7.3
45 – 49	298	7.5	7.7	7.2	7.3
50 – 54	279	7.0	6.9	6.3	6.4
55 – 59	336	8.4	6.6	5.7	5.7
60 – 64	415	10.4	7.3	6.0	6.0
65 – 69	291	7.3	6.2	5.0	4.7
70 – 74	220	5.5	4.9	4.0	3.9
75 – 79	164	4.1	3.8	3.2	3.1
80 – 84	141	3.5	2.9	2.4	2.4
85 – 89	84	2.1	1.8	1.5	1.5
90 Plus	48	1.2	0.9	0.7	0.8

Population Age Structure

- Early years: 4.5% (179) of the population were aged 0 to 4 years in March 2011. This compares with 5.1% at County level, 6.3% regionally and 6.3% nationally.
- School age: 12.9% (516) of the population were aged 5 to 17 years in March 2011. This compares with 14.9% at County level, 15.8% regionally and 15.1% nationally.
- Working age: 58.8% (2,345) of the population were aged 18 to 64 years in March 2011. This compares with 59.3% at County level, 61.0% regionally and 62.3% nationally.
- Retirement age: 23.8% (948) of the population were aged 65 and over in March 2011. This compares with 20.7% at County level, 16.9% regionally and 16.3% nationally.
- Over 85 year olds: 3.3% (132) of the population were aged 85 and over in March 2011. This compares with 2.7% at County level, 2.2% regionally and 2.2% nationally.

Diversity

- The 2011 Census showed Much Wenlock ward had a black and minority ethnic group population of 32 (0.80%). The largest broad ethnic group is 'Mixed' (within this the largest group is 'White and Black Caribbean'). For the first time the 2011 Census showed the Ward had a gypsy population of 2.
- When asked about their religion 31.6% (1261 people) identified themselves as having no religion or did not state it on the form. The majority of people (67.6%) identified themselves as Christian and 0.8% (32 people) identified themselves as having an alternative religion.
- The 2011 Census showed that no-one could not speak English well or at all.

Car Ownership

- The 2011 Census showed that 200 households (11.6%) did not own a car and subsequently were reliant on other forms of transport such as public transport services. In total 2,714 cars were owned by households resident in the ward.

Health

General Health

The 2011 Census asked three questions relating to health and the provision of unpaid care. The questions relate to whether people felt their general health was good, whether they looked after or gave help or support to other family members, friends, neighbours or others and lastly whether their day to day activities were limited because of a health problem or disability.

- At the time of the 2011 Census 47% people in Much Wenlock ward said that they felt they were in 'Very Good Health'. This compares to 46% for Shropshire as a whole.
- Only 1% reported that they were in 'Very Bad Health'. This is in line with the overall result for Shropshire (1%).

Provision of Unpaid Care

The question asked "do you look after, or give any help or support to family members, friends, neighbours or others because of either; a long term physical or mental ill health/disability? Or because of problems related to old age?"

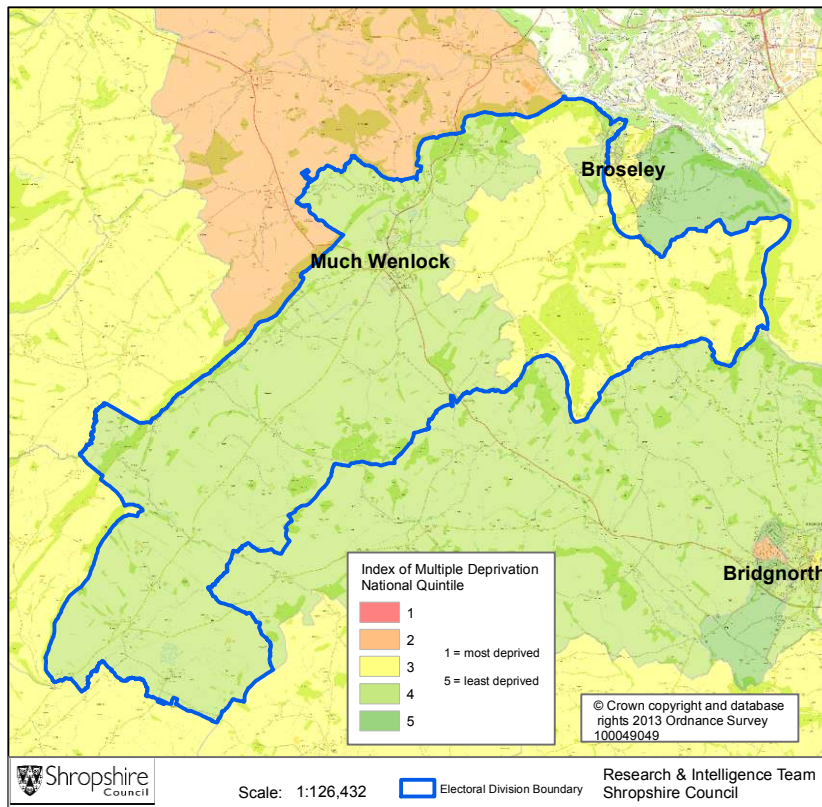
- At the time of the Census 9% said that they were providing 1 to 19 hours of unpaid care a week. This is slightly higher than the Shropshire figure of 7%.
- 1% said they provided between 20 and 49 hours of unpaid care. This is in line with the Shropshire figure of 1%.
- 2% said they provided over 50 hours of unpaid care. This is in line with the figure for Shropshire as a whole (2%) and the figure for England & Wales (2%).

Long Term Illness or Disability

The Census asked "Are your day-to-day activities limited because of a health problem or disability which has lasted, or is expected to last, at least 12 months?"

- 8% said that their day-to-day activities were limited a lot due to a health problem or disability. This is in line with the figure of 8% for Shropshire as a whole.
- The percentage who reported their day-to-day activities were limited a little was 11%. This is slightly higher than the figure of 10% for Shropshire as a whole.

Index of Multiple Deprivation



Much Wenlock Electoral Ward is made up of lower super output areas which fall within the 3rd or 4th quintile nationally in terms of the Overall Index of Multiple Deprivation.

Quintile 1 is the most deprived nationally and Quintile 5 the least deprived nationally.

Source: IMD 2010, Department for Communities and Local Government, © Crown Copyright 2014

Housing

- There were 1,729 households in Much Wenlock ward.
- The ward had 3,988 usual residents and covers an area of 8,214 hectares.
- 684 households were owner occupiers (owned outright) representing 40% of all households. There were 423 households (24% of all households) who owned their home with a mortgage or loan.
- There were 318 households who privately rented from a landlord (18% of all households.) There were also 32 households (2%) who privately rented from landlords classified as 'Other'.
- 166 households were renting social housing from the Council, totalling 10% of all households. There were also 60 households (3% of all households) renting social housing from 'Other' sources.
- In Much Wenlock ward there were 904 detached dwellings, or 50% of all dwellings. There are also 472 semi-detached and 294 terraced dwellings, equating to 26% and 16% respectively.
- 16% of all households are one person pensioner households. This equates to 278 households.
- 23.5% of households in the area had dependent children. The number of married couple households with dependent children was 239 and the number of cohabiting couples with dependent children was 62.
- There were 77 lone parent households, which equates to 4.5% of all households.

Planning Land Use Monitoring Data 2012-2013

Source: Shropshire Council, Planning Land Use Monitoring System, 2014

Housing

- During 2012-2013 there were 25 housing completions (gross) within the Much Wenlock ward. Included in this figure are 0 affordable housing units. During this time 1 dwelling was lost during development.
- At April 2013 there were 70 dwellings with planning permission outstanding, including 18 affordable houses.
- At April 2013, 0 proposed dwellings were part of the current Shropshire Council housing allocations. However, as part of the on-going preparation of the Site Allocations and Management of Development Plan (SAMDev) Plan, the Planning Policy team is now consulting on the 'Revised Preferred Options'.

Employment

- During 2012-2013, 0 hectares of Class B employment land was completed within the Much Wenlock ward. The total completed gross floor space amounted to 0 square metres.
- At April 2013 there remained 0.591 hectares of Class B employment land outstanding with planning permission and 1.659 hectares of allocated employment land.

Retail

- A total of 0 net square metres of retail floor space was completed in the Much Wenlock Ward during 2012-2013.
- At April 2013, 170 net square metres of retail floor space remained outstanding.

Holiday Lets

- Within the Much Wenlock ward, 2 holiday lets were completed during 2012-2013.
- At April 2013, 10 holiday let units remain outstanding.

Unemployment and Labour Market

Unemployment

- At the time of the Census, there were 96 Much Wenlock residents who were unemployed but available for work. This is 3.3% of the 16-74 year old population, compared to 3.3% for Shropshire.
- 25 young people (aged 16-24) were unemployed, plus a further 25 who were 50 to 74.
- Long term unemployment is also an issue – 32.3% of all unemployed people were classed as long-term unemployed in 2011. This is the equivalent of 31 people.

Labour Force

- 2043 Much Wenlock residents aged 16-74 are economically active.
- 35.0% of the Much Wenlock population has level 4 or above qualifications compared with 27.5% in Shropshire and 27.4% in England.
- The number with no formal qualifications at all stands at 706 people – at 20.9% of the population (aged over 16), this compares with the county average of 22.5%.
- 43.6% of the population work in standard occupation classifications 1-3 (managers, directors and senior officials, professional, associate professional and technical) and 15.3% work in standard occupation classifications 8 and 9 (process, plant and machine operatives and elementary occupations)

Travel to Work (Census 2011)

- 16.5% of the population in Much Wenlock are self-employed, and 7.46% work from home compared with 5.6% for Shropshire.
- The car is used as the main means of travel to work for 48.74%, while 1.09% use public transport.

Crime and Anti-Social Behaviour

Source: West Mercia Recorded Statistics, 2014

- There were 46 crimes in Much Wenlock ward in the period April to July 2013. The majority of these crimes occurred in the categories of theft and handling stolen goods (13.0%) criminal damage (17.4%), domestic burglary (4.3%), burglary other (39.1%), theft from a vehicle (6.5%) and violence against the person with injury (2.2%).
- The majority of crime occurred in the centre of Much Wenlock.
- There were 7 incidents of Anti-Social Behaviour (ASB) in the same period, the majority of these relate to nuisance. The highest number of incidents occurred within the area experiencing the highest area incidence of crime. Youth related ASB accounted for 57.1% of incidents and alcohol related 42.9%.

If you require any further information, or have any other research requests, please contact:

Intelligence & Research Team, Shropshire Council,
Shirehall, Abbey Foregate, Shrewsbury, Shropshire, SY2 6ND

Email: research@shropshire.gov.uk

Tel: 01743 252562

Web: www.shropshire.gov.uk/facts-and-figures

Twitter: @ShropinFocus