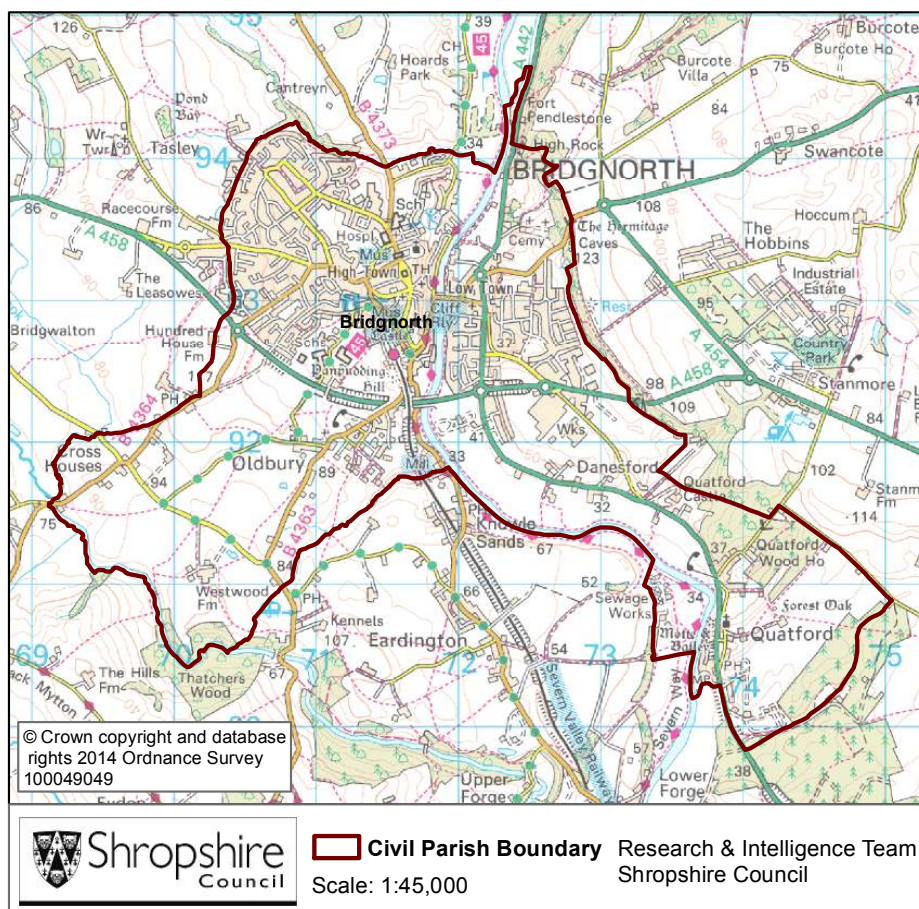


Bridgnorth Parish



Key Facts:	Bridgnorth Parish
Area:	1068.8 hectares
Population Density:	11.30 persons per hectare
Total Population	12079 (5927 males, 6152 females)
Household Population:	11906 (98.6%)
Households: Dwellings:	5501 5760
Communal Establishment no. / population	15 Communal Establishments 173 residents (1.4% of total population)

Source: 2011 Census, Office for National Statistics, © Crown Copyright 2014.

Population Age Structure

Table: Population by five year age group (2011 Census)

	Total Population	% of Total Population			
		Bridgnorth	Shropshire	West Midlands	England
All ages	12079	100.0	100.0	100.0	100.0
0 – 4	516	4.3	5.1	6.3	6.3
5 – 9	565	4.7	5.1	5.8	5.6
10 – 14	634	5.2	5.9	6.1	5.8
15 – 19	616	5.1	6.2	6.6	6.3
20 – 24	537	4.4	5.4	6.8	6.8
25 – 29	596	4.9	5.1	6.5	6.9
30 – 34	633	5.2	5.0	6.1	6.6
35 – 39	777	6.4	5.8	6.4	6.7
40 – 44	894	7.4	7.2	7.3	7.3
45 – 49	877	7.3	7.7	7.2	7.3
50 – 54	816	6.8	6.9	6.3	6.4
55 – 59	851	7.0	6.6	5.7	5.7
60 – 64	969	8.0	7.3	6.0	6.0
65 – 69	857	7.1	6.2	5.0	4.7
70 – 74	677	5.6	4.9	4.0	3.9
75 – 79	486	4.0	3.8	3.2	3.1
80 – 84	396	3.3	2.9	2.4	2.4
85 – 89	233	1.9	1.8	1.5	1.5
90 Plus	149	1.2	0.9	0.7	0.8

Population Age Structure

- Early years: 4.3% (516 children) of the population were aged 0 to 4 years in March 2011. This compares with 5.1% at County level, 6.3% regionally and 6.3% nationally.
- School age: 13.2% (1600 children) of the population were aged 5 to 17 years in March 2011. This compares with 14.9% at County level, 15.8% regionally and 15.1% nationally.
- Working age: 59.3% (7165 people) of the population were aged 18 to 64 years in March 2011. This compares with 59.3% at County level, 61.0% regionally and 62.3% nationally.
- Retirement age: 23.2% (2798 people) of the population were aged 65 and over in March 2011. This compares with 20.7% at County level, 16.9% regionally and 16.3% nationally.
- Over 85 year olds: 3.2% (382) of the population were aged 85 and over in March 2011. This compares with 2.7% at County level, 2.2% regionally and 2.2% nationally.

Diversity

- The 2011 Census showed Bridgnorth Parish had a black and minority ethnic group population of 187 (1.55%). The largest broad ethnic group is 'Asian' (within this the largest group is 'Chinese'). For the first time the 2011 Census showed Bridgnorth Parish had a gypsy population of 9.
- When asked about their religion 27.6% (3330 people) identified themselves as having no religion or did not state it on the form. The majority of people (71.5%) identified themselves as Christian and 0.9% (113 people) identified themselves as having an alternative religion.
- The 2011 Census showed that 9 people could not speak English well and 4 people could not speak English at all.

Car Ownership

- The 2011 Census showed that 985 households (17.9%) did not own a car and subsequently are reliant on other forms of transport such as public transport services. In total 7330 cars are owned by households resident in the parish area.

Health

General Health

The 2011 Census asked three questions relating to health and the provision of unpaid care. The questions relate to whether people felt their general health was good, whether they looked after or gave help or support to other family members, friends, neighbours or others and lastly whether their day to day activities were limited because of a health problem or disability.

- At the time of the 2011 Census 45% of people in Bridgnorth said that they felt they were in “Very Good Health”, this compares to 46% for Shropshire as a whole.
- 1.4% reported that they were in “Very Bad Health”. This is slightly higher than the overall result for Shropshire (1%).

Provision of Unpaid Care

The question asked “do you look after, or give any help or support to family members, friends, neighbours or others because of either; a long term physical or mental ill health/disability? or because of problems related to old age?”

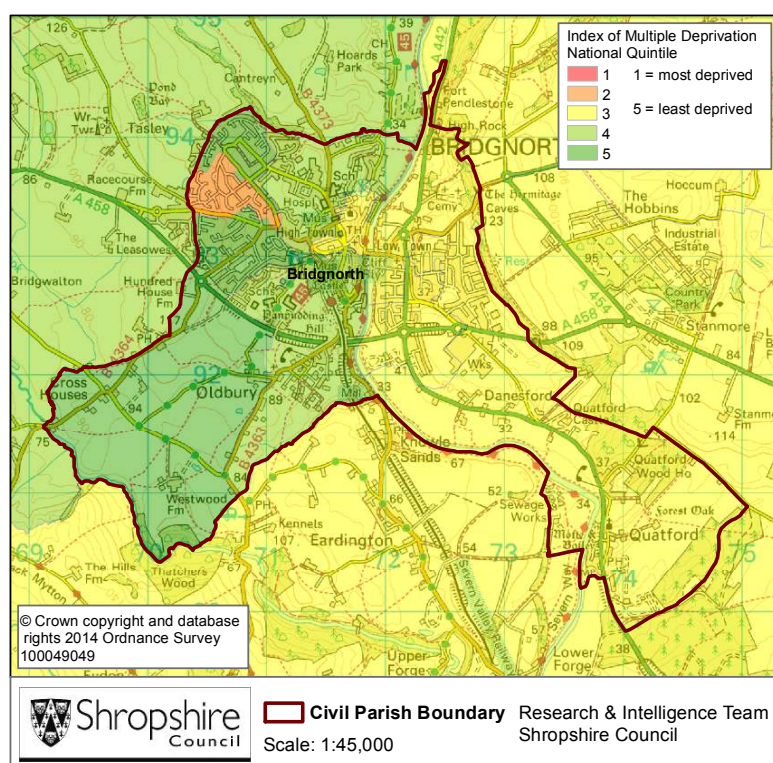
- At the time of the Census 8% said that they were providing 1 to 19 hours of unpaid care a week. This is slightly higher than the Shropshire figure of 7%.
- 1% said they provided between 20 and 49 hours per unpaid care. This is in line with the Shropshire figure of 1%.
- 2% said they provided over 50 hours of unpaid care. This is in line with the figure for Shropshire as a whole (2%) and the figure for England & Wales (2%).

Long Term Illness or Disability

The Census asked “Are your day-to-day activities limited a lot due to a health problem or disability which has lasted, or is expected to last, at least 12 months?”

- 9% said that their day-to-day activities limited a lot due to a health problem or disability. This is slightly higher than the figure of 8% for Shropshire as a whole.
- The percentage who reported their day-to-day activities were limited a little was 10%. This is in line with the Shropshire figure of 10%.

Index of Multiple Deprivation



The lower super output areas that cover Bridgnorth Parish fall within Quintiles 2-5 nationally.

Quintile 1 is the most deprived nationally and Quintile 5 the least deprived nationally.

Source: IMD 2010, Department for Communities and Local Government, © Crown Copyright 2014

Housing Data:

- There were 5501 households in Bridgnorth at the time of the 2011 Census.
- The parish had 12079 usual residents and covers an area of 1069 hectares.
- 2162 households were owner occupiers (owned outright) equating to 39.3% of all households. There were 1748 households (31.8%) who owned their home with a mortgage or loan.
- There were 739 households (13.4% of all households) that privately rented their home from a landlord. There were also 82 households (1.5% of all households) who privately rented from a landlord classified as 'Other'.
- 480 households were renting social housing from the Council totalling 8.7% of all households. There were also 176 households (3.2%) renting social housing from 'Other' sources.
- In Bridgnorth there were 1643 detached dwellings representing 28.5% of all dwellings. There were also 1973 semi-detached and 1266 terraced dwellings equating to 34.2% and 22.0% respectively.
- 15.9% of all households were one person pensioner households.
- 22.6% of households in the area had dependent children. The number of married couple households with dependent children was 769 and the number of cohabiting couples with dependent children was 184.
- There were 228 lone parent households (with dependent children), which equates to 4.1% of all households.

Planning Land Use Monitoring Data for Bridgnorth, 2012-2013

Source: Shropshire Council, Planning Land Use Monitoring System, 2014

Housing

- During 2012-2013 there were 36 housing completions (gross) within the Bridgnorth Parish. Included in this figure are 3 affordable housing units. During this time 0 dwellings were lost during development.
- At April 2013 there were 154 dwellings with planning permission outstanding, including 6 affordable houses.
- At April 2013, 0 proposed dwellings were part of the current Shropshire Council housing allocations. However, as part of the on-going preparation of the Site Allocations and Management of Development Plan (SAMDev) Plan, the Planning Policy team is now consulting on the 'Revised Preferred Options'.

Employment

- During 2012-2013, 0.171 hectares of Class B employment land was completed within the Bridgnorth Parish. The total completed gross floor space amounted to 1146 square metres.
- At April 2013 there remained 5.275 hectares of Class B employment land outstanding with planning permission and 0.344 hectares of allocated employment land.

Retail

- A total of 1291 net square metres of retail floor space was completed in the Bridgnorth Parish during 2012-2013.
- At April 2013, 2091 net square metres of retail floor space remain outstanding.

Holiday Lets

- Within the Bridgnorth Parish, 2 holiday lets were completed during 2012-2013.
- At April 2013, 0 holiday let units remain outstanding.

Unemployment and Labour Market

Unemployment

- At the time of the Census, there were 261 residents who were unemployed but available for work. This is 2.9% of the 16-74 year old population, compared to 3.3% for Shropshire.
- 72 young people (aged 16-24) were unemployed, plus a further 67 who were 50 to 74.
- Long term unemployment is also an issue – 37.16% of all unemployed people were classed as long-term unemployed in 2011. This is the equivalent of 97 people.

Labour Force

- 6280 Bridgnorth residents aged 16-74 are economically active.
- 28.2% of the Bridgnorth population has level 4 or above qualifications compared with 27.5% in Shropshire and 27.4% in England.
- The number with no formal qualifications at all stands at 2492 people – at 24.3% of the population (aged over 16), this compares with the county average of 22.5%.
- 42.0% of the population work in standard occupation classifications 1-3 (managers, directors and senior officials, professional, associate professional and technical) and 18.9% work in standard occupation classifications 8 and 9 (process, plant and machine operatives and elementary occupations).

Travel to Work (Census 2011)

- 11.6% of the population in Bridgnorth are self-employed, and 4.2% work from home compared with 5.6% for Shropshire.
- The car is used as the main means of travel to work for 47.5%, while 1.6% use public transport.

If you require any further information, or have any other research requests, please contact:

Intelligence & Research Team, Shropshire Council,
Shirehall, Abbey Foregate, Shrewsbury, Shropshire, SY2 6ND

Email: research@shropshire.gov.uk

Tel: 01743 252562

Web: www.shropshire.gov.uk/facts-and-figures

Twitter: @ShropinFocus