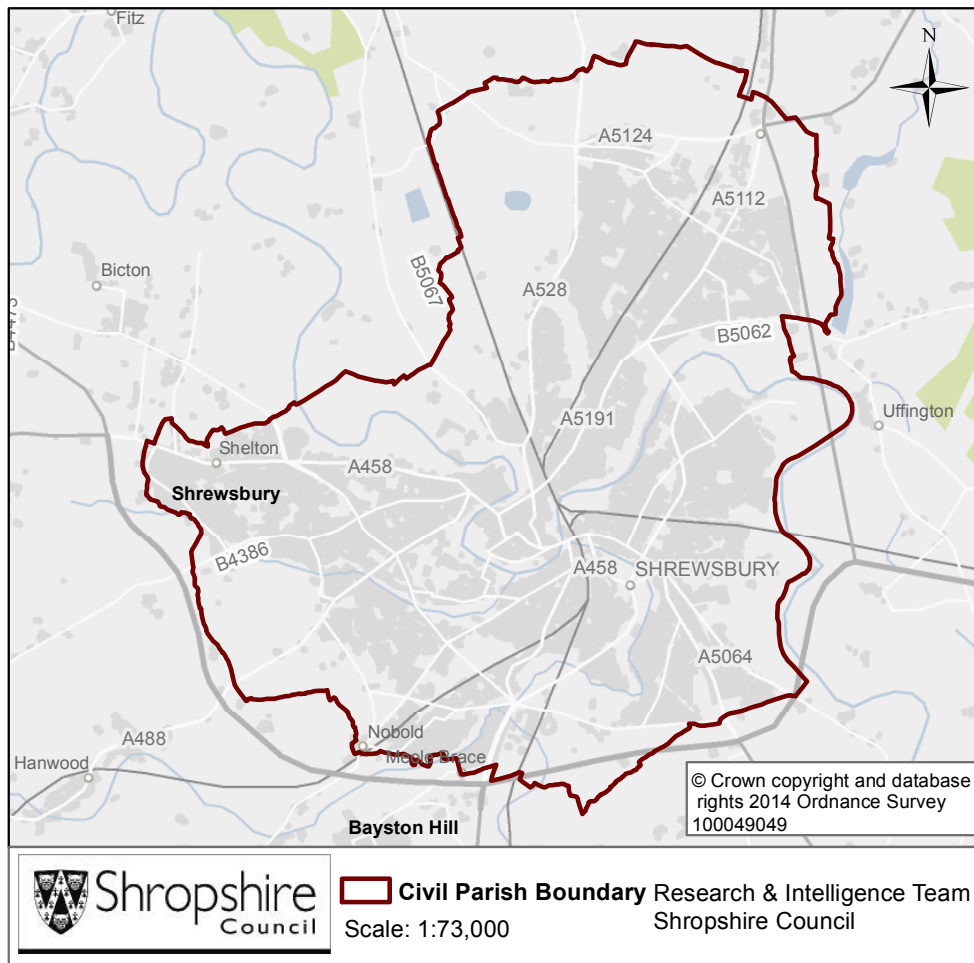


Shrewsbury Parish



Key Facts:	Shrewsbury Parish
Area:	3799.6 hectares
Population Density:	18.90 persons per hectare
Total Population	71715 (35434 males, 36281 females)
Household Population:	69929 (97.5%)
Households: Dwellings:	31135 32145
Communal Establishment no. / population	75 Communal Establishments 1786 residents (2.5% of total population)

Source: 2011 Census, Office for National Statistics, © Crown Copyright 2014.

Population Age Structure

Table: Population by five year age group (2011 Census)

	Total Population	% of Total Population			
		Shrewsbury	Shropshire	West Midlands	England
All ages	71715	100.0	100.0	100.0	100.0
0 – 4	4187	5.8	5.1	6.3	6.3
5 – 9	3823	5.3	5.1	5.8	5.6
10 – 14	4139	5.8	5.9	6.1	5.8
15 – 19	4467	6.2	6.2	6.6	6.3
20 – 24	4408	6.1	5.4	6.8	6.8
25 – 29	4613	6.4	5.1	6.5	6.9
30 – 34	4386	6.1	5.0	6.1	6.6
35 – 39	4646	6.5	5.8	6.4	6.7
40 – 44	5216	7.3	7.2	7.3	7.3
45 – 49	5405	7.5	7.7	7.2	7.3
50 – 54	4758	6.6	6.9	6.3	6.4
55 – 59	4289	6.0	6.6	5.7	5.7
60 – 64	4395	6.1	7.3	6.0	6.0
65 – 69	3623	5.1	6.2	5.0	4.7
70 – 74	3035	4.2	4.9	4.0	3.9
75 – 79	2394	3.3	3.8	3.2	3.1
80 – 84	1942	2.7	2.9	2.4	2.4
85 – 89	1301	1.8	1.8	1.5	1.5
90 Plus	688	1.0	0.9	0.7	0.8

Population Age Structure

- Early years: 5.8% (4187 children) of the population were aged 0 to 4 years in March 2011. This compares with 5.1% at County level, 6.3% regionally and 6.3% nationally.
- School age: 15.2% (10871 children) of the population were aged 5 to 17 years in March 2011. This compares with 14.9% at County level, 15.8% regionally and 15.1% nationally.
- Working age: 60.9% (43674 people) of the population were aged 18 to 64 years in March 2011. This compares with 59.3% at County level, 61.0% regionally and 62.3% nationally.
- Retirement age: 18.1% (12983 people) of the population were aged 65 and over in March 2011. This compares with 20.7% at County level, 16.9% regionally and 16.3% nationally.
- Over 85 year olds: 2.8% (1989) of the population were aged 85 and over in March 2011. This compares with 2.7% at County level, 2.2% regionally and 2.2% nationally.

Diversity

- The 2011 Census showed Shrewsbury Parish had a black and minority ethnic group population of 2142 (2.99%). The largest broad ethnic group is 'Asian' (within this the largest group is 'Other Asian'). For the first time the 2011 Census showed Shrewsbury Parish had a gypsy population of 45.
- When asked about their religion 35.3% (25326 people) identified themselves as having no religion or did not state it on the form. The majority of people (63.1%) identified themselves as Christian and 1.6% (1150 people) identified themselves as having an alternative religion.
- The 2011 Census showed that 251 people could not speak English well and 53 people could not speak English at all.

Car Ownership

- The 2011 Census showed that 6961 households (22.4%) did not own a car and subsequently are reliant on other forms of transport such as public transport services. In total 36541 cars are owned by households resident in the parish area.

Health

General Health

The 2011 Census asked three questions relating to health and the provision of unpaid care. The questions relate to whether people felt their general health was good, whether they looked after or gave help or support to other family members, friends, neighbours or others and lastly whether their day to day activities were limited because of a health problem or disability.

- At the time of the 2011 Census 47% of people in Shrewsbury said that they felt they were in “Very Good Health”, this compares to 46% for Shropshire as a whole.
- 1.1% reported that they were in “Very Bad Health”. This is slightly higher than the overall result for Shropshire (1%).

Provision of Unpaid Care

The question asked “do you look after, or give any help or support to family members, friends, neighbours or others because of either; a long term physical or mental ill health/disability? or because of problems related to old age?”

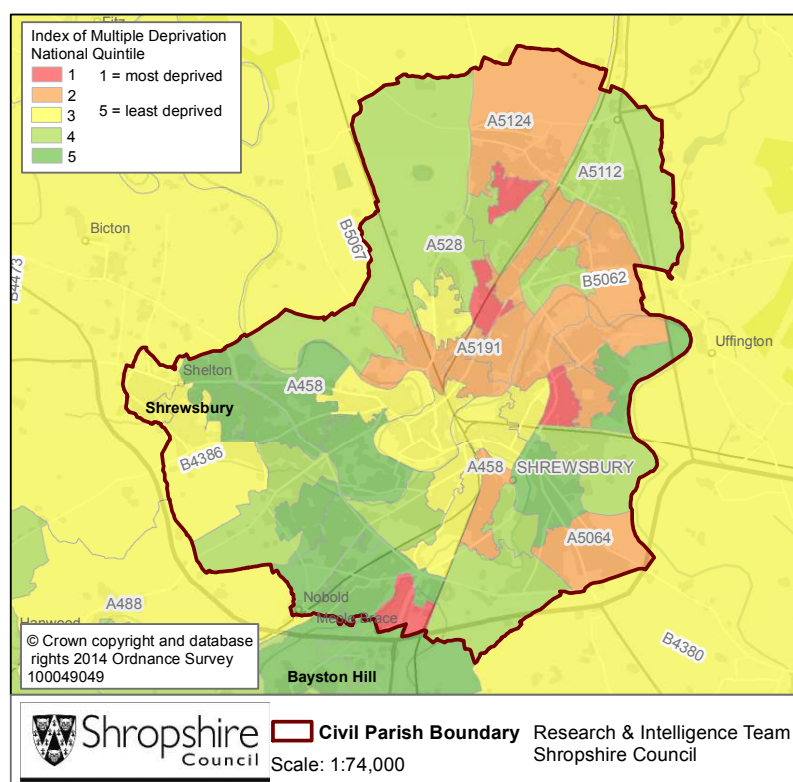
- At the time of the Census 7% said that they were providing 1 to 19 hours of unpaid care a week. This is in line with the Shropshire figure of 7%.
- 1% said they provided between 20 and 49 hours per unpaid care. This is in line with the Shropshire figure of 1%.
- 2% said they provided over 50 hours of unpaid care. This is in line with the figure for Shropshire as a whole (2%) and the figure for England & Wales (2%).

Long Term Illness or Disability

The Census asked “Are your day-to-day activities limited a lot due to a health problem or disability which has lasted, or is expected to last, at least 12 months?”

- 8% said that their day-to-day activities limited a lot due to a health problem or disability. This is in line with the figure for Shropshire of 8%.
- The percentage who reported their day-to-day activities were limited a little was 10%. This is in line with the Shropshire figure of 10%.

Index of Multiple Deprivation



The lower super output areas that cover Shrewsbury Parish fall within Quintiles 1-5 nationally.

Quintile 1 is the most deprived nationally and Quintile 5 the least deprived nationally.

Source: IMD 2010, Department for Communities and Local Government, © Crown Copyright 2014

Housing Data:

- There were 31135 households in Shrewsbury at the time of the 2011 Census.
- The parish had 71715 usual residents and covers an area of 3800 hectares.
- 10390 households were owner occupiers (owned outright) equating to 33.4% of all households. There were 10377 households (33.3%) who owned their home with a mortgage or loan.
- There were 4346 households (14.0% of all households) that privately rented their home from a landlord. There were also 434 households (1.4% of all households) who privately rented from a landlord classified as 'Other'.
- 1421 households were renting social housing from the Council totalling 4.6% of all households. There were also 3594 households (11.5%) renting social housing from 'Other' sources.
- In Shrewsbury there were 7090 detached dwellings representing 22.0% of all dwellings. There were also 12612 semi-detached and 7753 terraced dwellings equating to 39.2% and 24.1% respectively.
- 14.0% of all households were one person pensioner households.
- 27.2% of households in the area had dependent children. The number of married couple households with dependent children was 4347 and the number of cohabiting couples with dependent children was 1506.
- There were 2089 lone parent households (with dependent children), which equates to 6.7% of all households.

Planning Land Use Monitoring Data for Shrewsbury, 2012-2013

Source: Shropshire Council, Planning Land Use Monitoring System, 2014

Housing

- During 2012-2013 there were 249 housing completions (gross) within the Shrewsbury Parish. Included in this figure are 35 affordable housing units. During this time 4 dwellings were lost during development.
- At April 2013 there were 975 dwellings with planning permission outstanding, including 175 affordable houses.
- At April 2013, 130 proposed dwellings were part of the current Shropshire Council housing allocations. However, as part of the on-going preparation of the Site Allocations and Management of Development Plan (SAMDev) Plan, the Planning Policy team is now consulting on the 'Revised Preferred Options'.

Employment

- During 2012-2013, 1.392 hectares of Class B employment land was completed within the Shrewsbury Parish. The total completed gross floor space amounted to 5170 square metres.
- At April 2013 there remained 18.031 hectares of Class B employment land outstanding with planning permission and 5.435 hectares of allocated employment land.

Retail

- A total of 1738 net square metres of retail floor space was completed in the Shrewsbury Parish during 2012-2013.
- At April 2013, 21544 net square metres of retail floor space remain outstanding.

Holiday Lets

- Within the Shrewsbury Parish, 0 holiday lets were completed during 2012-2013.
- At April 2013, 3 holiday let units remain outstanding.

Unemployment and Labour Market

Unemployment

- At the time of the Census, there were 1970 residents who were unemployed but available for work. This is 3.8% of the 16-74 year old population, compared to 3.3% for Shropshire.
- 578 young people (aged 16-24) were unemployed, plus a further 368 who were 50 to 74.
- Long term unemployment is also an issue – 39.29% of all unemployed people were classed as long-term unemployed in 2011. This is the equivalent of 774 people.

Labour Force

- 38208 Shrewsbury residents aged 16-74 are economically active.
- 28.2% of the Shrewsbury population has level 4 or above qualifications compared with 27.5% in Shropshire and 27.4% in England.
- The number with no formal qualifications at all stands at 12199 people – at 20.8% of the population (aged over 16), this compares with the county average of 22.5%.
- 38.4% of the population work in standard occupation classifications 1-3 (managers, directors and senior officials, professional, associate professional and technical) and 18.7% work in standard occupation classifications 8 and 9 (process, plant and machine operatives and elementary occupations).

Travel to Work (Census 2011)

- 8.6% of the population in Shrewsbury are self-employed, and 3.1% work from home compared with 5.6% for Shropshire.
- The car is used as the main means of travel to work for 45.3%, while 3.7% use public transport.

If you require any further information, or have any other research requests, please contact:

Intelligence & Research Team, Shropshire Council,
Shirehall, Abbey Foregate, Shrewsbury, Shropshire, SY2 6ND

Email: research@shropshire.gov.uk

Tel: 01743 252562

Web: www.shropshire.gov.uk/facts-and-figures

Twitter: @ShropinFocus