

Safer Shropshire Multi Agency Domestic Abuse Strategy 2015-2017

Contents

| | |
|--|----|
| Foreword: Councillor Karen Calder..... | 3 |
| Introduction..... | 4 |
| Shropshire Countywide Domestic Abuse Forum..... | 5 |
| Governance and Accountability..... | 6 |
| Vision..... | 7 |
| Definition..... | 8 |
| Executive Summary..... | 9 |
| Key Facts and Figures – National Context..... | 10 |
| Key Facts and Figures – Shropshire Context..... | 11 |
| Key Achievements 2012-2014: Awareness..... | 12 |
| Key Achievements 2012-2014: Programmes..... | 13 |
| Key Messages 2015-2017..... | 14 |
| Action Plan | |
| Objective 1: Prevention..... | 15 |
| Objective 2: Preparation..... | 16 |
| Objective 3: Provision..... | 17 |
| Objective 4: Protection..... | 18 |
| Objective 5: Partnership..... | 19 |
| Glossary..... | 20 |
| Glossary, continued..... | 21 |
| References..... | 22 |
| Appendix 1: Training Matrix..... | 23 |
| Appendix 2: Training Matrix, Explained..... | 24 |
| Appendix 3: Domestic Abuse Forum Structure..... | 25 |
| Appendix 4: Delivery Plan 2015-2017 - Prevention..... | 26 |
| Appendix 5: Delivery Plan 2015-2017 - Preparation..... | 27 |
| Appendix 6: Delivery Plan 2015-2017 - Provision..... | 28 |
| Appendix 7: Delivery Plan 2015-2017 - Protection..... | 29 |
| Appendix 8: Delivery Plan 2015-2017 - Partnership..... | 30 |
| Map of Shropshire and partner logos..... | 31 |

Foreword: Councillor Karen Calder

Before you read this strategy I want you to think about the following:

- Between 2012 to 2013 it is estimated that around 1.2 million women suffered domestic abuse and over 330,000 women were sexually assaulted (ONS);
- 1 in 4 women experience domestic violence over their lifetimes;
- On average, a woman is assaulted 35 times before her first call to the police;
- Between April 2012 and March 2013 in Shropshire 131 cases were referred to the Multi-Agency Risk Assessment Conferences (MARACs), 29 of these were repeat cases.

This is unacceptable and has to stop.

Domestic abuse can have a devastating, and long term, effect on the lives of victims (male and female), their children and the communities in which they live. It ruins lives, breaks apart families and has an impact across generations. Domestic Abuse is a complex issue and its far-reaching

effects require a co-ordinated and integrated multi-agency response. The purpose of this document is to set out our strategic approach and provide a robust framework from which to make the most effective use of our collective resources.

The Shropshire Countywide Domestic Abuse Forum, part of the Safer Stronger Communities Partnership, has developed the Domestic Abuse Strategy which includes a strong focus on early intervention, protection and support for victims and their families, and changing the behaviour and attitudes of actual and potential perpetrators with the aim of preventing abuse happening in the first place.

I am proud to present Shropshire's Domestic Abuse Strategy 2015-17 on behalf of the partners across the County who work to protect and support those affected by it.

Councillor Karen Calder
Portfolio Holder Public Health
Shropshire Council

Introduction

Tackling Domestic Abuse is a priority for key agencies and organisations across Shropshire.

It is the Shropshire Countywide Domestic Abuse Forum's responsibility to encourage these agencies and organisations to work in partnership in order to create an environment where domestic violence and abuse is not tolerated and to reduce the impact on victims in Shropshire. The Forum will assist in developing and coordinating services to meet the needs of victims, assist in dealing with abusers and in developing interventions which promote awareness, prevent abuse and protect victims and survivors.

Partnership working is essential to developing effective and safe services for victims, it is accepted that no single agency can address this problem in isolation.

The key priority for the Forum is to develop and implement the Shropshire Domestic Abuse Strategy on a three yearly basis, reviewing each Strategy annually. This Strategy links to other key local, regional and national strategies, including the Crime Reduction and Community Safety Strategy, Police & Crime Plan and the Violence Against Women & Girls Action

Plan, as well other organisation's strategies and other guidance and programmes, for example: NICE (National Institute for Health & Care Excellence) guidance on Domestic Violence and Abuse and the expanded National Troubled Families Programme which now includes a specific criteria for victims and perpetrators of domestic abuse.

The purpose of this document is to set out what Shropshire intends to do over the next three years 2015-2017 in order to tackle domestic abuse within our communities.

This means that, as a partnership, we must tackle both the causes and effects. This includes an emphasis on prevention, including education and awareness-raising which would assist in increasing reporting of domestic abuse incidents and assist in changing harmful attitudes which contribute towards domestic abuse within our communities.

This also includes protection and support for victims and their families, and changing the attitudes and behaviour of perpetrators with the aim of preventing abuse happening in the first place and reducing repeat victimisation.

***'No one shall be held in slavery or servitude.'* Declaration Of Human Rights**

Shropshire Countywide Domestic Abuse Forum

The Shropshire Countywide Domestic Abuse Forum consists of a wide range of statutory, non-statutory and voluntary sector agencies and organisations operating across Shropshire, including Shropshire Council (Public Health, Housing, Children Services and Education), West Mercia Police, Probation, Community Rehabilitation Company, specialist domestic abuse service providers, including IDVA (Independent Domestic Violence Advisor) Service, outreach and refuge, Victim Support and Healthcare professionals.

All members of the Forum recognise:

- That domestic abuse is unacceptable in our community. All individuals whatever their age have the right to live their lives free from abuse and violence and the threat of abuse and violence.
- That domestic abuse happens regardless of age, race, sexual orientation, gender identity, disability, class, HIV status, nationality, and marital status, religious or political beliefs. However, these factors mean that victim/survivors may face a multiplicity of discrimination.
- That while the majority of victims/survivors are woman, men can also experience domestic abuse and services should therefore be appropriate to a range of needs.
- That a whole range of behaviours can constitute abuse, including physical, psychological, sexual, financial and emotional abuse.
- That children also experience abuse directly, or as witnesses, and therefore abuse in the home must be specifically addressed within responses around child

protection, and children's needs must be addressed within responses around domestic abuse.

- That all services should be offered in a non-judgemental manner and aim to maximise choices.
- That mutual respect, trust, professionalism and a desire for sensitive and appropriate service delivery are essential to a multi-agency approach.
- That members of the Forum are accountable to their respective organisation/group.
- That confidentiality is of paramount importance to ensure safety.
- That effective multi-agency consultation on policy and practice has a vital role in service delivery, and agencies represented on the Forum will give a high priority to such consultation.
- That the Forum has sub-groups, which meet regularly throughout the year (DA Training Strategy, Task & Finish for DA Strategy, White Ribbon Group). Other sub-groups may be established by the Forum in order to progress specific areas of the Forum's work. Subgroups will meet as appropriate and report back to Forum meetings.

A full definition of Domestic Violence and Abuse can be found on the Freedom Shropshire Website - www.freedomshropshire.org.uk and [The Home Office Website](http://www.homeoffice.gov.uk).

Governance and Accountability

The Shropshire Countywide Domestic Abuse Forum meets quarterly and has been established to deliver the objectives contained within the Shropshire Domestic Abuse Strategy and the Crime Reduction, Community Safety and Drug and Alcohol Strategy. The focus of the strategies is to build on and compliment the existing inter-agency response to dealing with domestic abuse to develop multi-agency training and awareness of domestic violence and to respond swiftly and effectively to those at greatest risk from domestic violence.

The Shropshire Countywide Domestic Abuse Forum is accountable to the Safer Stronger Communities Partnership Board. The Safer Stronger Communities Partnership is the Community Safety Partnership (CSP) in Shropshire. Community Safety Partnerships, formerly Crime and Disorder Partnerships (CDRPS) were established under the Crime and Disorder Act 1988. Section 17 imposes a duty on local authorities and the Police to: 'without prejudice to any other obligation imposed upon it – exercise its function with due regard to the need to do all it reasonably can to prevent crime and disorder in its area.'

The Community Safety Partnership's targets in terms of reducing crime, Anti-Social Behaviour, fear of crime and substance misuse are set out in the Community Safety Partnership Plans drawn up under the terms of the legislation and guidance.

The Shropshire Countywide Domestic Abuse Forum Structure is provided in Appendix 3 and the Terms of Reference, Minutes of meetings and other useful information about the Forum and events can be found on the [Freedom Shropshire Website](#).

"Any incident or pattern of incidents of controlling, coercive, threatening behaviour, violence or abuse between those aged 16 or over who are, or have been, intimate partners or family members regardless of gender or sexuality."

'All human beings are born free and equal in dignity and rights.' Declaration Of Human Rights

Vision

Where there is no vision, the people perish... Proverbs 29 v 18

The strategy's vision focuses on meeting the needs of all victims who experience abuse through the development of more equitable, accessible and effective services; and on working towards the development of a community in which domestic violence and abuse is unacceptable and will not be tolerated. The ultimate goal is to put in place all practicable measures towards the elimination of domestic violence and abuse.

The strategy is provided on behalf of the Shropshire Countywide Domestic Abuse Forum (SCDAF) in consultation with the local domestic abuse forums, MARAC (Multi Agency Risk Assessment Conference) members and a number of domestic abuse survivors from Shropshire.

The strategy sets out the commitment of all the partner agencies to adopt a consistent and long-term approach to the prevention of domestic violence and an effective response where it occurs.

'Everyone is entitled to all the rights and freedoms set forth in this Declaration.' Declaration Of Human Rights

Overall Aims

The overall aims of the strategy are:

- To improve services and support for all victims of domestic violence and abuse.
- To develop and deliver a high quality, coordinated multi-agency response to domestic violence and abuse.
- To further increase and develop awareness generally about domestic violence and abuse and the measures in place to help the victims.
- To educate children and young people and the wider general public that domestic violence and abuse is wrong and is unacceptable and to enable them to make informed choices.
- To hold perpetrators/abusers accountable and provide effective interventions for their behaviour.

'Everyone has the right to life, liberty and security of person.' Declaration Of Human Rights

Definition

What is domestic abuse?

Domestic Abuse can involve a range of behaviours, which are abusive and which would not necessarily be classed as violent.

The new definition of domestic violence and abuse as defined by the Government from 1st April 2013 is:

'Any incident or pattern of incidents of controlling, coercive or threatening behaviour, violence or abuse between those aged 16 or over who are or have been intimate partners or family members regardless of gender or sexuality.'

This violence or abuse can be:

- Psychological
- Physical
- Sexual
- Financial
- Emotional

Controlling behaviour is a range of acts designed to make a person subordinate and or dependent by isolating them from

resources or support, exploiting their resources and capacities for personal gain, depriving them of the means needed for independence, resistance and escape and regulating their everyday behaviour.

Coercive behaviour is an act of or a pattern of acts of assault, threats, humiliation and intimidation or other abuse that is used to harm, punish or frighten their victim.

This definition, which is not a legal definition, includes so called 'honour' based violence, female genital mutilation (FGM) and forced marriage.

Both men and women can be victims of domestic violence; however women are more likely to experience repeated and severe forms of violence.

Domestic violence is quite common, affecting one in four women during their lifetime.

Domestic violence takes place in all types of relationships, including lesbian, gay, bisexual and transgender relationships. It can also involve other family members, including children.

Executive Summary

Domestic Abuse – Overview Shropshire

Since the austerity measures were introduced by the Coalition Government the Public Sector has seen a reduction in resources - both staffing and funding - which has had an impact on how services are delivered. Crime Reduction and Community Safety projects and initiatives have not been immune from the cuts and this has affected areas such as domestic abuse.

In the latest figures from 2012 to 2013 published by the Office of National Statistics it is estimated that around 1.2 million women suffered domestic abuse and over 330,000 women were sexually assaulted. The Government has identified domestic abuse as a priority and launched initiatives such as 'Clare's Law' and Domestic Violence Protection Orders aimed at raising awareness of domestic abuse, and the impact it has on the lives of individuals and families.

But the recession has combined with strains that are contributing factors to domestic abuse, and a shrinking of the services available to those experiencing domestic abuse. This has included cuts to police and the criminal justice system, cuts to charities working on domestic abuse that are funded by local government and wider cuts that contribute to the reduction in provisions for those affected by domestic abuse, predominantly women and children.

Against the backdrop of reducing services and resources Shropshire, agencies are still working to provide support and help.

Multi Agency Risk Assessment Conferences (MARAC) continue to offer help and support to victims suffering domestic abuse; Independent Domestic Violence Advisors offer help and support to victims and their families; the Refuges in the North and South of the County still help victims fleeing their homes and abusive relationships; Sanctuary Scheme which undertakes 'target hardening' on properties of victims to ensure that they can remain in their homes and remain safe. Other agencies continue to work in partnership to help those in abusive relationships.

***'No one shall be subjected to torture or to cruel, inhuman or degrading treatment or punishment.'* Declaration Of Human Rights**

Key Facts and Figures – National Context

Domestic abuse affects all communities regardless of gender, age, race, religion, sexual orientation, ability, social or economic position.

In 2012/13, there were over 2 million adults who experienced domestic abuse, that was 1.2 million female and 700,000 male victims of domestic abuse in England and Wales. Data from the Crime Survey for England and Wales suggests that 30 per cent of women and 16.3 per cent of men in England and Wales will experience domestic violence in their lifetime.

The National and International context of domestic violence and abuse reveals some harrowing facts and figures, in particular for woman and yet research also shows that domestic violence continues to be chronically underreported to service providers:

- 1 in 4 women experience domestic violence over their lifetimes and between 6-10% of women suffer domestic violence in a given year (Council of Europe, 2002)
- 45% of UK women have experienced some form of domestic violence, sexual assault or stalking.
- Several global surveys suggest that half of all women who die from homicide are killed by their current or former husbands or partners.
- Domestic violence in the UK is estimated to cost victims, services and the state a total of around £23 billion a year.
- Women aged 15-44 are more at risk from rape and domestic violence than from cancer, motor accidents, war and malaria, according to World Bank data.

- Around 85% of forced marriage victims are women in the UK.
- 2 women are killed every week in England and Wales by a current or former partner (Homicide e Statistics, 1998)
- Every minute police in the UK receive a domestic assistance call – yet only 35% of domestic violence incidents are reported to the police (Stanko, 2000 & Home Office, 2002)

Although, both men and women, whether in a same-sex or heterosexual relationships, experience domestic abuse, the research clearly shows that women are more likely to experience physical injury and serious injury.

However, the research shows that 94% of abuse victims find the mental cruelty more painful to endure than physical violence (White Ribbon campaign UK). The White Ribbon campaign in the UK have made it their mission to raise awareness of psychological abuse and the symptoms often shown by victims.

These may include:

- Becoming withdrawn, depressed or anxious.
- Suffering a drop in self-esteem.
- Regularly checking in with their partner to report their whereabouts and what they are doing.
- Receiving harassing phone calls from their partner.
- Talking about their partner's temper, jealousy or possessiveness.

Key Facts and Figures – Shropshire Context

One in every four women will experience domestic violence in her lifetime

Based on the fact that one in four women are likely to experience domestic violence and with a population figure of 121,900 for women over 16, in Shropshire, some 30,475 women will experience domestic violence during their lifetime. ('Review of Domestic Violence Provision in Shropshire 2009').

"Annually over 12,000 women will have experienced some form of physical and/ or psychological abuse..." (The Shropshire Domestic Violence Strategy 2006-2009)

National research estimates that domestic violence costs place a per capita 'tax' of some £143.00 per head of population, based on costs in 2005. In Shropshire this equates to £43.8 million total population cost. (Population figure of 306,100 – Census 2011)

By using national research and local population data it is possible to estimate some of the costs of domestic violence within the local authority, for example:

If only 25% (588) of the victims in Shropshire in 2008–2009 made 3 visits to their GP because of injuries arising from domestic violence, it would cost the health service some £59,388.00

If only 15% (352) of all the victims in Shropshire in 2008-2009 experienced a common assault as a result of domestic

violence the costs for the agencies involved will be £75,680.00.

If only 2% (47) of all the victims in Shropshire in 2008-2009 were wounded as a result of domestic violence the costs to the Police, CPS, Courts, Probation Service, Prisons and Criminal Injuries Compensation is in the region of £113,834.00

The long term effects of domestic abuse; the emotional, mental and psychological impact for victims and their families are more difficult to measure.

Key Achievements 2012-2014: Awareness

Campaigns and Events

The Shropshire Countywide Domestic Abuse Forum participated in local and national campaigns throughout the last three years, supporting in particular campaigns from the national charities: Refuge and Women's Aid and the Home Office campaign; 'This is abuse' to tackle teenage domestic abuse. The Forum has increased support annually for the White Ribbon campaign, encouraging the people of Shropshire to pledge their support, providing ribbons to all and in 2014 promoting the enrolment of male White Ribbon ambassadors. The campaign is about men standing up against violence against women.

Key partners from the Shropshire Countywide Domestic Abuse Forum provided Annual Networking Events which both promoted domestic abuse services and raised awareness of domestic abuse. These events were as follows:

November 2012 – White Ribbon Networking Event –South Shropshire Forums

September 2013 – SEEDS Shropshire Launch Event

November 2013 – Refuge, South Shropshire Domestic Violence Services & West Mercia Women's Aid – The Hidden Crime Conference.

November 2014 – Safeguarding Conference-SSCB
Compromised Parenting Conference

Survivor Forum – SEEDS Shropshire

The development of a Survivor Forum in Shropshire in June 2012 has proved significant in raising awareness and improving domestic abuse training. As partners agree, hearing from the victim transforms their understanding of the issues and has given professionals a deeper knowledge in informing their practice. It was the Central Shropshire Domestic Abuse Forum which assisted primarily in creating SEEDS Shropshire, providing resources, staffing and funding.

SEEDS Shropshire which stands for Survivors Empowering and Educating Domestic Abuse Services is a means by which survivors have their voices heard by those planning and providing domestic abuse services. The overall aim is to improve services by learning from survivors experiences. SEEDS members are involved in training, raising awareness, giving presentations, participating in consultation events and conducting research amongst survivors.

Helping to improve services for men, women and children affected by Domestic Abuse & Violence across Shropshire.

Key Achievements 2012-2014: Programmes

Programmes across Shropshire

Agencies and organisations working across Shropshire have continued to work in partnership to enable women to understand the impact domestic abuse may have had on them, and their children, and support families to make positive changes in their lives.

The Freedom Programme has been delivered for many years in Shropshire by different partners and in the last three years, support for victims has increased with the introduction to the county of three further programmes:

Power to Change – this programme aims to help victims & survivors understand the impact the abuse has had on their confidence and self-esteem. It helps them consider healthy boundaries and begin to deal with the emotional impact of domestic abuse. Participants will end the programme being able to practise assertiveness skills and be able to process positively feelings of guilt, fear and anger.

Parenting through Domestic Abuse - this programme helps survivors to recognise how children may have been affected by domestic abuse and how to support their children to cope with their experiences. Participants will end the programme with strategies in place for rebuilding or reinforcing a healthy relationship with their children.

Recovery Toolkit – this programme is offered to survivors of domestic abuse once they are ready to move forward with their lives. The programme recognises that survivors say the

hardest part of recovery is to deal with the psychological distress caused by the abuse. Participants are encouraged to recognise how they have coped with this distress and learn to improve their psychological wellbeing by developing positive lifestyle coping strategies, set positive and healthy boundaries and rebuild self-esteem and confidence.

We all need a helping hand

Key Messages 2015-2017

- **Domestic Abuse is unacceptable and will not be tolerated.**
- The Strategy focuses on meeting the needs of **ALL** victims of domestic abuse.
- The ultimate goal is to put in place all practical measures towards the **elimination of domestic violence and abuse.**
- The Strategy sets out the commitment of all the partner agencies to adopt a **consistent and long term approach to the prevention of domestic violence and an effective response when it occurs.**

The Aims of the Strategy:

- **Improve services and support** for all victims of domestic abuse.
- Develop and deliver a **high quality, coordinated response** to domestic abuse.
- **Increase awareness** generally about domestic violence and abuse and measures in place to help victims.
- **Educate children and young people** and wider general public that domestic violence and **abuse is unacceptable.**
- **Hold abusers accountable** and **provide effective interventions** for their behaviour.

Tackling Domestic Abuse is a priority for key agencies and organisations across Shropshire

The Action Plan:

- *Agencies and organisations will work proactively in partnership across Shropshire to stop domestic abuse happening in the first place, and where the abuse has occurred, to prevent the abuse from escalating in order to reduce harm and repeat victimisation.*
- *The Shropshire County Wide Domestic Abuse Forum recognises the importance of the role of training in working towards the elimination of domestic abuse.*
- *Effective management of resources across all agencies and organisations is critical to ensure the safety, protection and wellbeing of all victims and children whatever the risk identified.*
- *The Shropshire Countywide Domestic Abuse Forum will support key partners in driving forward a holistic plan to work with perpetrators to reduce risk and prevent domestic abuse recurring.*
- *Domestic Violence and abuse is a complex social problem requiring a partnership response to both the causes and effects.*

Action Plan: Prevention

Objective 1 : Improve Prevention

This means working proactively in partnership across Shropshire to stop domestic abuse happening in the first place, and where abuse has occurred, to prevent the abuse from escalating in order to reduce the harm and repeat victimisation.

This will be achieved by raising awareness of domestic abuse across Shropshire. One of the key campaigns for partners in Shropshire has been the White Ribbon campaign which encourages people across the county to make the following pledge:



'I pledge never to commit, condone, or remain silent about men's violence against women in all its forms.'

In addition, over the last three years, the Shropshire Countywide Domestic Abuse Forum has provided the Freedom Shropshire website which has been designed to enable people who live, and work, in Shropshire to access relevant and up to date information on domestic abuse.

The Forum will continue to support and develop this website and promote international, national, regional and local events and campaigns in order to raise awareness of domestic abuse.

What we will do

- We will develop an effective and targeted communication plan.
- We will review the available resources, including leaflets and posters and develop information and publicity materials for Multi Agency Risk Assessment Conference (MARAC), Specialist Domestic Violence Court (SDVC).
- We will make arrangements for the distribution, and display of relevant and up to date information in public buildings and other suitable venues.
- We will facilitate Annual Networking Events which both promote domestic abuse services in Shropshire and raise awareness of domestic abuse particularly among young people.
- We will produce monthly newsletters and provide regular weekly news updates on the Freedom Shropshire website in order to keep professionals, and members of the public, fully informed of any developments or initiatives to tackle domestic abuse.
- We will raise awareness across Shropshire by utilising materials and publicity from national campaigns, and work in partnership with specific campaigns and programmes.

Action Plan: Preparation

Objective 2 : Increase Education

The Shropshire Countywide Domestic Abuse Forum recognises the importance of the role of training in working towards the elimination of domestic abuse.

In Shropshire, the multi-agency domestic abuse training, including both the basic awareness day and the course relating to the impact on children, has been delivered annually by Joint Training and Shropshire Safeguarding Children Board (SSCB) respectively.

In addition, a basic awareness E-learning course has been made available through the SSCB. It is this training that the Forum will seek to encourage partners to utilise amongst staff in agencies and organisations across Shropshire.

These courses will continue to be provided and these, and any subsequent courses, will be reviewed continually by the Shropshire Countywide Domestic Abuse Forum, to ensure they are up to date and relevant. (The training matrix is at appendix 1).

There are different types of domestic abuse, including emotional, psychological, physical, sexual and financial abuse. The Shropshire Countywide Domestic Abuse Forum will seek to educate professionals, in all forms of domestic violence and abuse, including FGM, Honour Based Violence, Forced Marriage and Stalking.

What we will do

- We will commission the delivery of the 2 Day Freedom Programme for Professionals Domestic Abuse Multi Agency Training and review training needs in line with the Domestic Abuse Training Strategy.
- We will encourage partners to provide basic domestic abuse awareness training for all staff and, if possible, to make it mandatory.
- We will develop a stand-alone MARAC Training course for professionals across Shropshire and equip services with an increased knowledge and understanding of domestic abuse risk assessments, encouraging professionals to use the DASH (Domestic Abuse Stalking and Harassment) Domestic Abuse Risk Indicator Checklist.
- We will support and develop training on domestic violence and abuse for health and social care professionals.
- We will encourage and support the development of corporate strategies in order to support employees who experience domestic abuse.
- We will work to change social attitudes and beliefs which have a negative impact in communities, and promote programmes and projects that aim to develop healthy relationships.

Action Plan: Provision

Objective 3 : Improve Health and Wellbeing of Survivors

Effective management of resources across all agencies and organisations is critical to ensure the safety, protection and wellbeing of all victims and children whatever the level of risk identified. This means not only organising resources so that partners effectively ensure victims' safety and protection, but also by providing the right level of specialist support services for victims which are accessible, effective and resourced at the appropriate levels.

It is well documented that victims are not always aware that they are in abusive relationships and the research shows that women experience as many as 35 assaults before they will call the Police. By working together, partners will seek to increase the reporting of domestic violence and abuse in order that victims and families have access to appropriate services at the earliest opportunity.

Often victims don't know they are being abused.

What we will do

- We will coordinate the Quality Assurance of programmes delivered by partners in Shropshire.
- We will seek funds for both dedicated domestic abuse outreach services and a specialist domestic abuse counselling service for all victims in Shropshire.
- We will review the evidence and investigate the need for support for parents who are abused by their children.
- We will work with partners in order to retain specialist domestic violence accommodation, and continue to monitor and support the development of the IDVA Service, particularly in both the Hospital and the Courts, as well as continuing support at MARAC.
- We will review services and agency responses to young people experiencing domestic abuse and find ways to offer appropriate and accessible support.
- We will encourage partners to routinely make enquires with the families that engage their services about whether they are experiencing domestic abuse.
- We will provide the appropriate specialist support for DA victims who are affected by substance misuse and or mental health issues.
- We will undertake analysis of data on male victims of domestic abuse and we will review support for diverse and minority groups, including LGBT, ethnic groups and older people, in particular at MARAC and develop DV services for these groups as appropriate.

Action Plan: Protection

Objective 4 : Working with perpetrators

In the Domestic Abuse Strategy 2012-2014, partners agreed to consider the development of a Voluntary Perpetrator Programme in Shropshire. The agreed action was:

'To undertake a feasibility study for a voluntary perpetrator's programme in Shropshire, the findings of which will be presented to the County Forum.'

The study found that there was a gap in the service for non-convicted perpetrators of domestic abuse. Since November 2013, partners in Shropshire, and across West Mercia have been working together to provide a suitable Voluntary Perpetrator Programme.

The Shropshire Countywide Domestic Abuse Forum will support key partners in driving forward a holistic plan to work with perpetrators to reduce the risk and prevent domestic abuse from recurring.

What we will do

- We will continue to explore the development of evidence based perpetrator programmes for adult male non-convicted perpetrators and seek funding to deliver a programme across Shropshire and the West Mercia region.
- We will develop holistic interventions for perpetrators of domestic abuse, reviewing the provision for all their needs.
- We will further explore the development of evidence based perpetrator programmes or other appropriate interventions for young people, female perpetrators and perpetrators in same-sex relationships.
- We will work together to take further action to stop known and serial domestic violence perpetrators from re-offending by reviewing, monitoring and improving frontline responses and gathering information from partners.
- We will increase our knowledge and understanding of domestic abuse by reviewing current research and case studies in order to provide accurate responses to the cause of the problem of domestic abuse, utilising data for example from the [Domestic Abuse Research Group](#).

Action Plan: Partnership

Objective 5 : Improve Partnership working

Domestic Violence and abuse is a complex social problem and harms not only local communities but also the rest of society. The damage caused by domestic abuse to victims, children, other family members, friends, neighbours and the wider community are the responsibility of all agencies with a role to play in the areas of health, social care and crime.

Domestic Abuse damages families and the development and education of our children; it affects businesses and employers and increases the demand for housing. Over the years, research has shown that partnership working is the only way to reduce domestic abuse. There has been significant progress made in tackling domestic violence in recent years, particularly through partnership efforts such as the specialist courts and the Multi Agency Risk Assessment Conferences (MARAC). Co-ordinated Action Against Domestic Abuse (CAADA) has stated:

'At the heart of a MARAC is the working assumption that no single agency or individual can see the complete picture of the life of a victim, but all may have insights that are crucial to their safety'.

What we will do

- We will support local forums in raising awareness locally and providing relevant and up to date information for professionals across Shropshire.
- We will refresh partners' and Magistrates' awareness of the SDVC protocols and seek to work with the Crime Prosecution Service (CPS) and courts to improve justice outcome for victims.
- We will continue to respond to lessons learnt from Domestic Homicide Reviews (DHR) across the country, reviewing cases and sharing this information.
- We will work with SEEDS Shropshire to gain wider engagement from survivors in hearing their views and perspectives in responding to domestic abuse.
- We will monitor the MARAC and work on developments highlighted in Self Assessments.
- We will continue to develop a Coordinated Community Response to domestic abuse as outlined in the Model: www.ccrm.org.uk

Glossary

CAADA - Co-ordinated Action Against Domestic Abuse

CAADA is a national charity supporting a strong multi-agency response to domestic abuse. Its work focuses on saving lives and public money. CAADA provides practical help to support professionals and organisations working with domestic abuse victims. The aim is to protect the highest risk victims and their children – those at risk of murder or serious harm.

Clare's Law – the Domestic Violence Disclosure Scheme

This scheme is designed to provide victims with information that may protect them from an abusive situation before it ends in tragedy. The scheme allows the police to disclose information about a partner's previous history of domestic violence or violent acts. The Domestic Violence Disclosure Scheme is named after Clare Wood who was brutally murdered in 2009 by her former partner George Appleton, who had a record of violence against women.

Coercive control

This is a term and concept developed by Evan Stark which seeks to explain the range of tactics used by perpetrators and the impact of those on victims. It highlights the on-going nature of the behaviour and the extent to which the actions of the perpetrator control the victim through isolation, intimidation, degradation and micro-regulation of everyday life. Crucially it sets out such abuse can be psychological as well as physical. Coercive control is explicitly covered by the definition of domestic abuse.

DASH – Domestic Abuse, Stalking and Harassment

DASH is a risk identification, assessment and management model adopted by UK police forces and partner agencies in 2009. The aim of the DASH assessment is to help front-line practitioners identify high risk cases of domestic abuse, stalking and so-called honour-based violence.

DHR -Domestic Homicide Review

Local areas are expected to undertake a multi-agency review following a domestic homicide. The process aims to assist all those involved, to identify the lessons that can be learned from homicides where a person is killed as a result of domestic violence, with a view to preventing future homicides and violence.

DVPO – Domestic Violence Protection Order

Domestic violence protection orders are a new power that fills a gap in providing protection to victims by enabling the police and magistrates to put in place protection in the immediate aftermath of a domestic violence incident. With DVPOs, a perpetrator can be banned with immediate effect from returning to a residence and from having contact with the victim for up to 28 days, allowing the victim time to consider their options and get the support they need.

FGM –Female Genital Mutilation

Female genital mutilation (sometimes referred to as female circumcision) refers to procedures that intentionally alter or cause injury to the female genital organs for non-medical reasons. The practice is illegal in the UK.

Glossary, continued

Forced Marriage

Forced marriage is when you face physical pressure to marry (eg threats, physical violence or sexual violence) or emotional and psychological pressure (eg if you're made to feel like you're bringing shame on your family). Forced marriage is illegal in England and Wales.

Honour based violence

Honour based violence is a violent crime or incident which may have been committed to protect or defend the honour of the family or community. It is often linked to family members or acquaintances who mistakenly believe someone has brought shame to their family or community by doing something that is not in keeping with the traditional beliefs of their culture.

IDVA – Independent Domestic Violence Advisor

Independent domestic violence advisers or advocates (IDVAs) are trained specialists who provide a service to victims at high risk of harm from intimate partners, ex-partners or family members, with the aim of securing their safety and the safety of their children. Serving as a victim's primary point of contact, IDVAs normally work with their clients from the point of crisis, to assess the level of risk, discuss the range of suitable options and develop safety plans.

MARAC - Multi-Agency Risk Assessment Conference

The MARAC, which stands for Multi-Agency Risk Assessment Conference, is a meeting between representatives from different organisations in Shropshire to discuss the safety,

health and wellbeing of people experiencing domestic abuse, and to provide a safety plan for them and their children. The MARAC is a coordinated response to domestic abuse where professionals share information, obtain a clearer picture and are then able to provide the right help to make the victim and children safer and reduce the risk of further abuse.

SDVC –Specialist Domestic Violence Court

A Specialist Domestic Violence Court (SDVC) forms part of a combined approach to tackling domestic violence by the police, the Crown Prosecution Service (CPS), District Judges, magistrates, courts and probation, together with specialist support services for victims. This approach situates the court and the criminal justice system as part of a community-wide response to domestic violence.

References

Home Office (2014) Call to End Violence Against Women and Girls: Action Plan

Merida Associates, Polly Goodwin, Ruth Wilson, Karen Garry, Review of Domestic Violence Provision in Shropshire October 2009

Merida Associates, Shropshire Multi-Agency Risk Assessment Conferences (MARAC) Qualitative research findings April 2010

Shropshire Safer Stronger Communities Partnership, Crime Reduction, Community Safety and Drug & Alcohol Strategy 2014-2017

Shropshire Domestic Violence Forum, Shropshire Domestic Violence Strategy Action Plan 2008-2011

Shropshire Domestic Violence Strategy Group, Shropshire Domestic Violence Strategy 2006-2009

Shropshire Domestic Abuse Strategy 2012-2014

Home Office (2013) Domestic Homicide Reviews – Common Themes identified as Lessons to be learned

NICE public health guidance 50 –Domestic Violence and abuse: how health services, social care and the organisations they work with can respond effectively Feb 2014

Warwickshire Police and West Mercia Police Domestic Abuse Strategy 2014-2017

HMIC 2014 West Mercia Police's approach to tackling domestic abuse

Standing Together Against Domestic Violence – A Guide to Effective Domestic Violence Partnerships May 2011

Listening and learning – Improving support for victims in West Mercia – Victim Support

Police and Crime Plan 2013-2017 – West Mercia Police

Shropshire Domestic Abuse Services – We all need a helping hand in life leaflet

Appendix 1: Training Matrix

Specialist Training

Accredited Training
National & local
learning DHR

Targeted Training

- SSCB Domestic Abuse – ‘Impacts on children’
 - Domestic Abuse – Joint Training
- Recommended for staff who have frequent contact with service users and can refer to specialist services. This may include those with decision making responsibilities.

Universal Training

- SSCB E-Learning – Kwango basic Domestic Abuse Package
- MARAC Training

Recommended for staff who have infrequent contact with service users, who will refer to targeted services and have no safeguarding decision making responsibilities. Or An introduction to the topic of domestic abuse, followed by Targeted Training, see above.

Appendix 2: Training Matrix, Explained

Universal Training – All staff

This training maybe delivered in a variety of ways;

- SSCB Domestic Abuse E-Learning module (2 hours introduction session)
- Induction – Single agency Training (2 hours session)
- Approved Raising Awareness Training (½ day training)

Recommended frequency; Every three years.

Recommended for all staff that have infrequent contact with service users and no decision making responsibilities. For those staff who sign post to further services. Or an introduction to the topic of domestic abuse, followed by targeted training. For example; Leisure Staff, Environmental Health Officers, Receptionists, Maintenance Workers, Fire safety Officers, Police.

Targeted Training – Specific staff

This training will be delivered face to face and may include;

- SSCB Domestic Abuse - 'Impacts on Children' (1 full day training)
- Domestic Abuse Raising Awareness – Shropshire Council (1 full day training)
- Working with male victims – Respect (1 full days training)
- Assessment and Safety Planning (TBC)
- Approved Domestic Abuse Training (TBC)

- Learning from National and Local Domestic Homicide or Serious Case Reviews

Recommended frequency; Every three years.

Recommended for specific staff who need skills to identify, respond, assess and refer services users to domestic abuse services. For example; Supported Housing Officers, Children's Centre, Midwife, Health Visitors, A & E staff, Specialist Police Officers, Social Workers.

Specialist Training – Specialist Domestic Abuse Workers

This Training maybe delivered single or multi-agency and may include;

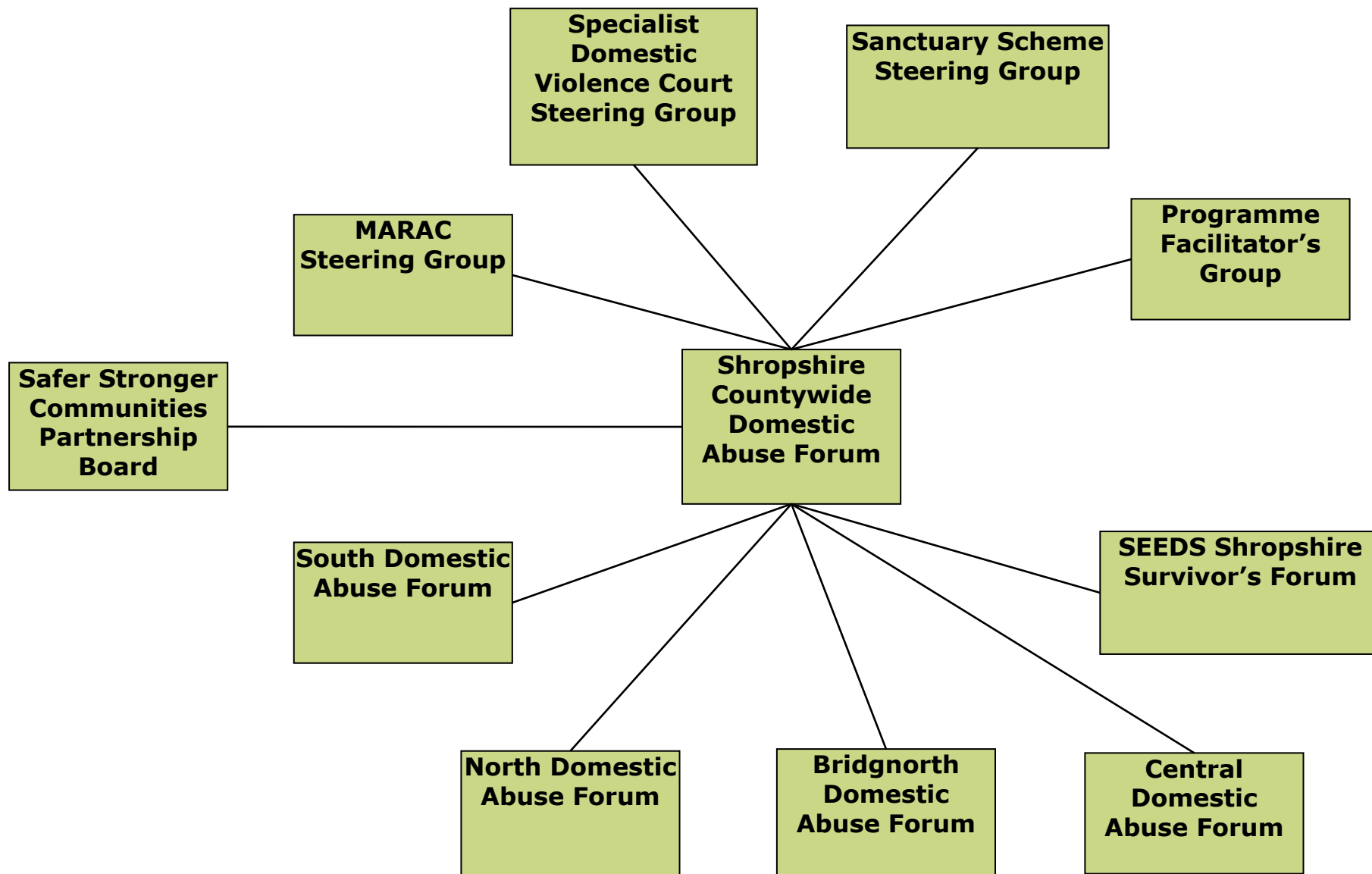
- Accredited Programmes (For example Respect 6 days training)
- Working with children who have experienced domestic abuse (2 days)
- Working with perpetrators of Domestic Abuse (2 days)

Consideration should be given to the Training of Managers in these settings to ensure they have the skills required to manage, supervise and support their staff;

- Supervision Training
- Vicarious Trauma

Recommended frequency; Recommended for those staff working with domestic abuse on a regular basis. For example; IDVA's, DV Outreach Workers, Refuge Workers, Social workers, Specialist Police Officers, Domestic Abuse Champions.

Appendix 3: Domestic Abuse Forum Structure



Appendix 4: Delivery Plan 2015-2017 - Prevention

| Actions | Outcomes | Owners | Update Annually | Links to Other Plans |
|---|---|---|----------------------|--|
| Prevention - Objective 1 - Improve Prevention | | | | |
| Through a Communication Plan and the distribution of relevant information, Annual Networking Events and Newsletters, raise awareness of services available to victims across Shropshire | <p>Increase awareness of support for victims;</p> <p>Increase the reporting of domestic abuse;</p> <p>Reduce the number of victims.</p> | Public Health; Shropshire Countywide Domestic Abuse Forum; North, Central, South Domestic Abuse Forums; SEEDS Shropshire; Freedom Shropshire Team | 2015 2016 2017 | Shropshire Crime Reduction, Community Safety and Drug & Alcohol Strategy 2014 - 2017; West Mercia Police and Crime Plan; West Mercia and Warwickshire Police Domestic Abuse Strategy; Violence Against Women and Girls Action Plan |

Appendix 5: Delivery Plan 2015-2017 - Preparation

| Actions | Outcomes | Owners | Update Annually | Links to Other Plans |
|--|---|---|----------------------|--|
| Preparation - Objective 2 - Increase Education | | | | |
| Review current training and commission future training; develop MARAC & DASH training; develop training for Health Professionals | <p>Improve and develop professionals ability to identify & deal with domestic abuse;</p> <p>Reduce the number of victims.</p> | Shropshire Countywide Domestic Abuse Forum; SSCB; MARAC; Joint Training | 2015 2016 2017 | Shropshire Crime Reduction, Community Safety and Drug & Alcohol Strategy 2014 - 2017; West Mercia Police and Crime Plan; West Mercia and Warwickshire Police Domestic Abuse Strategy; Violence Against Women and Girls Action Plan |

Appendix 6: Delivery Plan 2015-2017 - Provision

| Actions | Outcomes | Owners | Update Annually | Links to Other Plans |
|---|---|--|----------------------|---|
| Provision - Objective 3 - Improve Health & Wellbeing of Survivors | | | | |
| Co-ordinate quality assurance programmes; Support outreach and counselling services Investigate parent abuse Support accommodation & IDVA service; Review services for young people; Encourage routine enquiry; Provide support for complex needs; Review support for diverse communities | Ensure that abuse victims receive consistent service through improved short and long term support and service provision; Improve support for victims, children and young people; Increase the reporting of domestic abuse incidents | Surestart Children's Centres; South Shropshire Domestic Violence Services; AXIS; West Mercia Police; IDVA Service; SSCB; DAAT; CMHT; West Mercia Women's Aid; Refuge; Shropshire Countywide Domestic Abuse Forum; Safer Stronger Communities Partnership Board | 2015 2016 2017 | Shropshire Crime Reduction, Community Safety and Drug & Alcohol Strategy 2014 - 2017; West Mercia Police and Crime Plan; Shropshire Children, Young People, and Families Plan 2014 Refresh; West Mercia and Warwickshire Police Domestic Abuse Strategy; Violence Against Women and Girls Action Plan |

Appendix 7: Delivery Plan 2015-2017 - Protection

| Actions | Outcomes | Owners | Update Annually | Links to Other Plans |
|---|--|---|----------------------|---|
| Protection - Objective 4 - Working with Perpetrators | | | | |
| Develop a Voluntary Perpetrator programme for men; explore programmes for other perpetrators and through partnership working stop serial perpetrators | In 2015 – 16 establish a baseline for the number of perpetrators completing the perpetrators programme; Reduce repeat incidents by the same perpetrator | Shropshire Countywide Domestic Abuse Forum; SSCB; Safer Stronger Communities Partnership Board; Police & Crime Commissioner | 2015 2016 2017 | Shropshire Crime Reduction, Community Safety and Drug & Alcohol Strategy 2014 - 2017; West Mercia Police and Crime Plan; Shropshire Children, Young People, and Families Plan 2014 Refresh; West Mercia and Warwickshire Police Domestic Abuse Strategy; Violence Against Women and Girls Action Plan |

Appendix 8: Delivery Plan 2015-2017 - Partnership

| Actions | Outcomes | Owners | Update Annually | Links to Other Plans |
|---|---|--|-------------------------------|---|
| Partnership - Objective 5 - Improve Partnership Working | | | | |
| Support local Domestic Abuse forums; improve support for victims through SEEDS Shropshire; monitor & develop MARAC; and work with the Courts and CPS. | <p>Reduce serious injury and/or death linked to domestic abuse;</p> <p>Increase engagement with survivors;</p> <p>Reduce repeat victimisation</p> | <p>North, Central, South Domestic Abuse Forums; SEEDS Shropshire; MARAC; Safer Stronger Communities Partnership Board; Courts; CPS; Refuge; West Mercia Women's Aid; South Shropshire Domestic Violence Services; West Mercia Police</p> | <p>2015 2016 2017</p> | <p>Shropshire Crime Reduction, Community Safety and Drug & Alcohol Strategy 2014 - 2017; West Mercia Police and Crime Plan; West Mercia and Warwickshire Police Domestic Abuse Strategy; Violence Against Women and Girls Action Plan</p> |

Map of Shropshire and partner logos



Population of Shropshire:
306,100 (2011 Census)

Page 31

