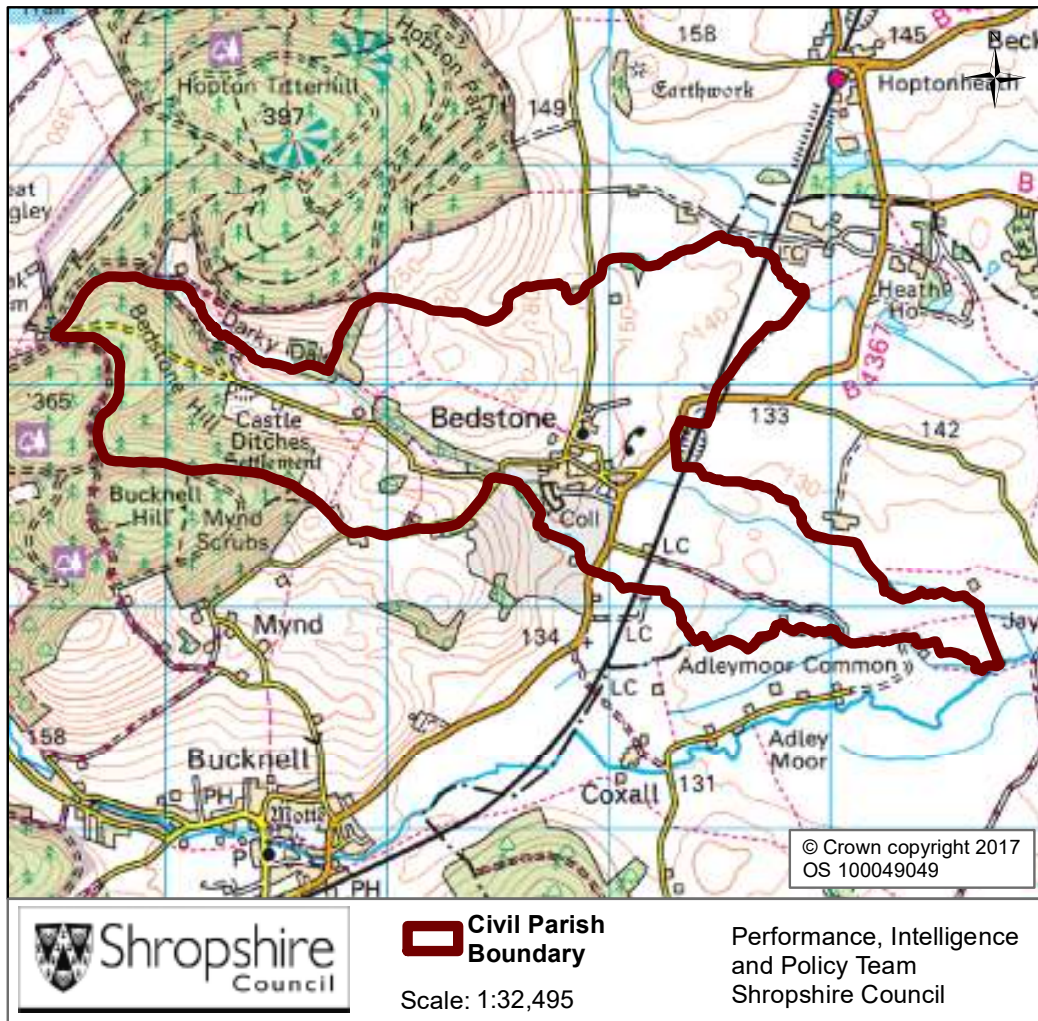


Bedstone Parish



Population

Key Facts:	Bedstone Parish
Area:	1366.7 hectares
Population Density:	0.20 persons per hectare
Total Population	272 (157 males, 115 females)
Household Population:	179 (65.8%)
Households: Dwellings:	74 77
Communal Establishment no. / population	1 Communal Establishments 93 residents (34.2% of total population)

Source: 2011 Census, National Statistics.

Please note: Ward boundary changes in 2009 mean it is not possible to compare over time.

	Total Population	% of Total Population			
		Bedstone	Shropshire	West Midlands	England
All ages	272	100.0	100.0	100.0	100.0
0 – 4	6	2.2	5.1	6.3	6.3
5 – 9	18	6.6	5.1	5.8	5.6
10 – 14	39	14.3	5.9	6.1	5.8
15 – 19	73	26.8	6.2	6.6	6.3
20 – 24	7	2.6	5.4	6.8	6.8
25 – 29	8	2.9	5.1	6.5	6.9
30 – 34	7	2.6	5.0	6.1	6.6
35 – 39	4	1.5	5.8	6.4	6.7
40 – 44	13	4.8	7.2	7.3	7.3
45 – 49	18	6.6	7.7	7.2	7.3
50 – 54	8	2.9	6.9	6.3	6.4
55 – 59	23	8.5	6.6	5.7	5.7
60 – 64	15	5.5	7.3	6.0	6.0
65 – 69	6	2.2	6.2	5.0	4.7
70 – 74	11	4.0	4.9	4.0	3.9
75 – 79	9	3.3	3.8	3.2	3.1
80 – 84	3	1.1	2.9	2.4	2.4
85 – 89	2	0.7	1.8	1.5	1.5
90 Plus	2	0.7	0.9	0.7	0.8

Diversity

- The 2011 Census showed Bedstone Parish had a black and minority ethnic group population of 30 (11.03%). The largest broad ethnic group is 'Asian' (within this the largest group is 'Chinese').
- When asked about their religion 40.4% (110 people) identified themselves as having no religion or did not state it on the form. The majority of people (56.3%) identified themselves as Christian and 3.3% (9 people) identified themselves as having an alternative religion.
- The 2011 Census showed that 5 people could not speak English well, there were no people who could not speak English at all.

Population Age Structure

- Early years: 2.2% (6 children) of the population were aged 0 to 4 years in March 2011. This compares with 5.1% at County level, 6.3% regionally and 6.3% nationally.
- School age: 40.4% (110 children) of the population were aged 5 to 17 years in March 2011. This compares with 14.9% at County level, 15.8% regionally and 15.1% nationally.

- Working age: 45.2% (123 people) of the population were aged 18 to 64 years in March 2011. This compares with 59.3% at County level, 61.0% regionally and 62.3% nationally.
- Retirement age: 12.1% (33 people) of the population were aged 65 and over in March 2011. This compares with 20.7% at County level, 16.9% regionally and 16.3% nationally.
- Over 85 year olds: 1.5% (4) of the population were aged 85 and over in March 2011. This compares with 2.7% at County level, 2.2% regionally and 2.2% nationally.

Car Ownership

- The 2011 Census showed that 2 households (2.7%) did not own a car and subsequently are reliant on other forms of transport such as public transport services. In total 126 cars are owned by households resident in the place plan area.

General Health

The 2011 Census asked three questions relating to health and the provision of unpaid care. The questions relate to whether people felt their general health was good, whether they looked after or gave help or support to other family members, friends, neighbours or others and lastly whether their day to day activities were limited because of a health problem or disability.

At the time of the 2011 Census 57% of people in Bedstone said that they felt they were in "Very Good Health", this compares to 46% for Shropshire as a whole.

Nobody reported that they were in very bad health.

Provision of Unpaid Care

The question asked "do you look after, or give any help or support to family members, friends, neighbours or others because of either; a long term physical or mental ill health/disability? or because of problems related to old age?"

At the time of the Census 4% said that they were providing 1 to 19 hours of unpaid care a week. This is less than the Shropshire figure of 7%.

Nobody identified themselves as providing 20 to 49 hours of care.

2% said they provided over 50 hours of unpaid care. This is in line with the figure for Shropshire as a whole (2%) and the figure for England & Wales (2%).

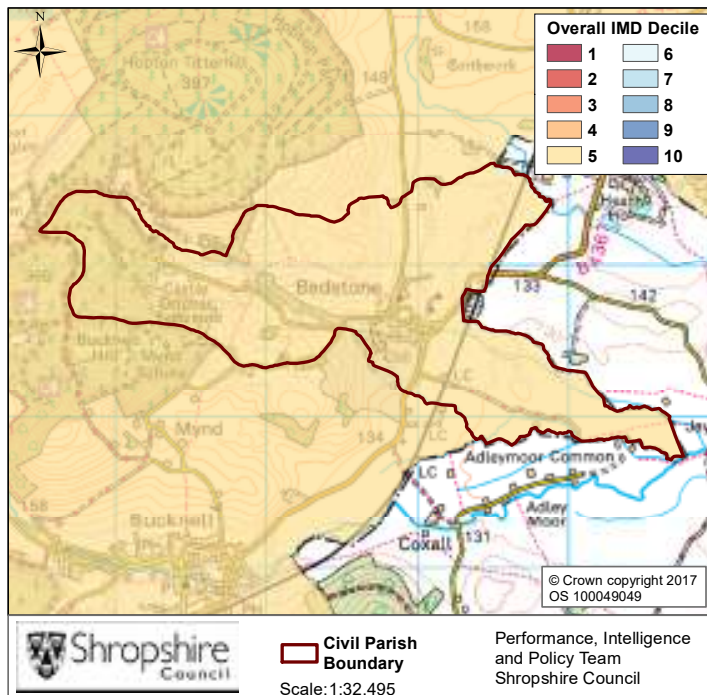
Long Term Illness or Disability

The Census asked "Are your day-to-day activities limited a lot due to a health problem or disability which has lasted, or is expected to last, at least 12 months?"

4% said that their day-to-day activities limited a lot due to a health problem or disability. This is less than the County figure of 8%.

The percentage who reported their day-to-day activities were limited a little was 8%. This is less than the figure of 10% for Shropshire as a whole.

Index of Multiple Deprivation



The lower super output area that covers Bedstone Parish falls within Percentile 5 nationally.

Percentile 1 is the most deprived nationally and Percentile 10 the least deprived nationally.

Source: IMD 2015, Department for Communities and Local Government, © Crown Copyright 2017

Housing Data:

- There were 74 households in Bedstone at the time of the 2011 Census.
- The parish had 272 usual residents and covers an area of 1367 hectares.
- 29 households were owner occupiers (owned outright) equating to 39.2% of all households. There were 15 households (20.3%) who owned their home with a mortgage or loan.
- There were 16 households (21.6% of all households) that privately rented their home from a landlord. There were also 2 households (2.7% of all households) who privately rented from a landlord classified as 'Other'.
- There were no households renting social housing from the Council. There were 4 households (5.4%) renting social housing from 'Other' sources.
- In Bedstone there were 46 detached dwellings representing 59.7% of all dwellings. There were also 20 semi-detached and 9 terraced dwellings equating to 26.0% and 11.7% respectively.
- 18.9% of all households were one person pensioner households.
- 28.4% of households in the area had dependent children. The number of married couple households with dependent children was 14 and the number of cohabiting couples with dependent children was 3.
- There were 4 lone parent households (with dependent children), which equates to 5.4% of all households.

Unemployment and Labour Market

Unemployment

- At the time of the Census, there were 2 residents who were unemployed but available for work. This is 1.1% of the 16-74 year old population, compared to 3.3% for Shropshire.
- There were no young people (aged 16-24) who were unemployed, there was one person aged 50 to 74 who was unemployed.
- 50.0% of all unemployed people were classed as long-term unemployed in 2011. This is the equivalent of 1 people.

Labour Force

- 91 Bedstone residents aged 16-74 are economically active.
- 36.1% of the Bedstone population has level 4 or above qualifications compared with 27.5% in Shropshire and 27.4% in England.
- The number with no formal qualifications at all stands at 27 people – at 13.9% of the population (aged over 16), this compares with the county average of 22.5%.
- 52.2% of the population work in standard occupation classifications 1-3 (managers, directors and senior officials, professional, associate professional and technical) and 11.4% work in standard occupation classifications 8 and 9 (process, plant and machine operatives and elementary occupations).

Travel to Work (Census 2011)

- 17.4% of the population in Bedstone are self-employed, and 11.8% work from home compared with 5.6% for Shropshire.
- The car is used as the main means of travel to work for 27.0%, while 1.7% use public transport.