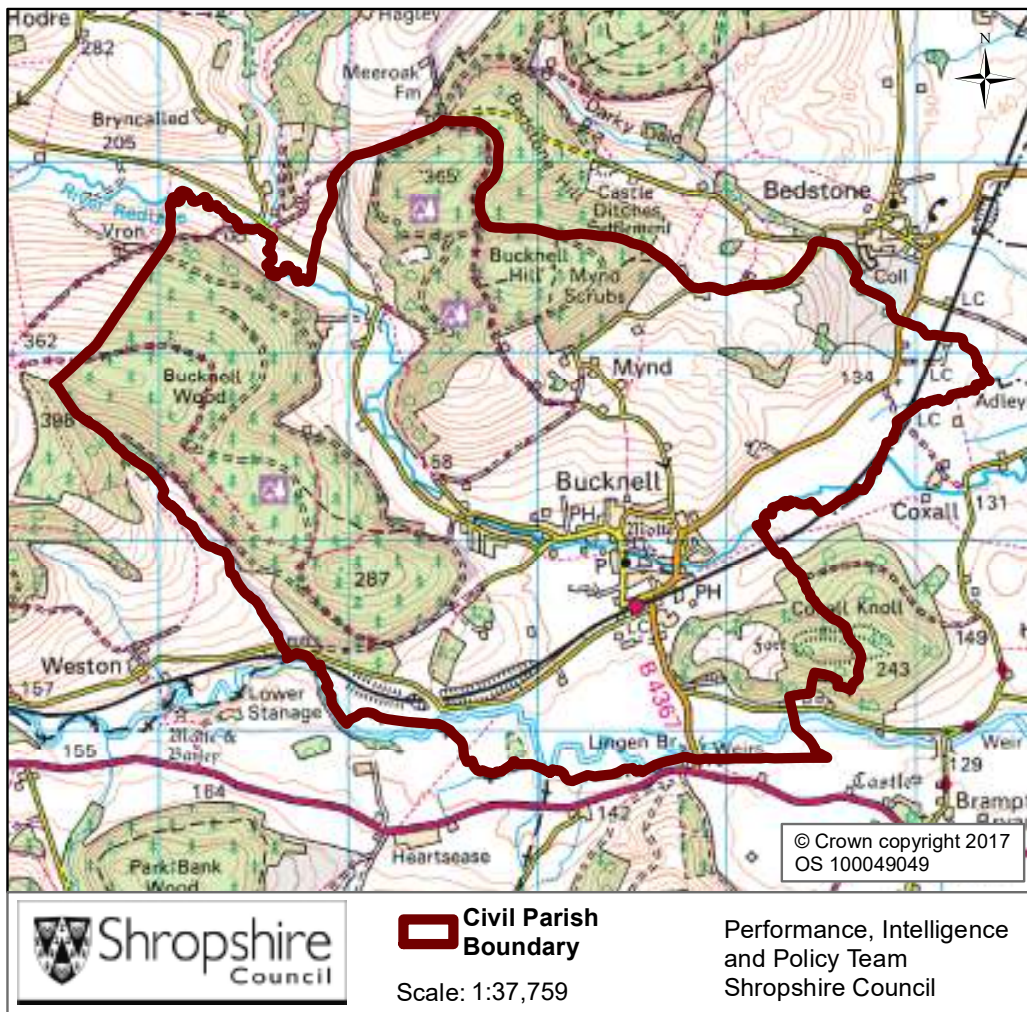


Bucknell Parish



Population

Key Facts:	Bucknell Parish
Area:	989.1 hectares
Population Density:	0.70 persons per hectare
Total Population	717 (357 males, 360 females)
Household Population:	717 (100.0%)
Households:	343
Dwellings:	366
Communal Establishment no. / population	1 Communal Establishments 0 residents (0.0% of total population)

Source: 2011 Census, National Statistics.

Please note: Ward boundary changes in 2009 mean it is not possible to compare over time.

	Total Population	% of Total Population			
		Bucknell	Shropshire	West Midlands	England
All ages	717	100.0	100.0	100.0	100.0
0 – 4	20	2.8	5.1	6.3	6.3
5 – 9	37	5.2	5.1	5.8	5.6
10 – 14	42	5.9	5.9	6.1	5.8
15 – 19	29	4.0	6.2	6.6	6.3
20 – 24	26	3.6	5.4	6.8	6.8
25 – 29	18	2.5	5.1	6.5	6.9
30 – 34	17	2.4	5.0	6.1	6.6
35 – 39	33	4.6	5.8	6.4	6.7
40 – 44	33	4.6	7.2	7.3	7.3
45 – 49	65	9.1	7.7	7.2	7.3
50 – 54	55	7.7	6.9	6.3	6.4
55 – 59	57	7.9	6.6	5.7	5.7
60 – 64	64	8.9	7.3	6.0	6.0
65 – 69	58	8.1	6.2	5.0	4.7
70 – 74	41	5.7	4.9	4.0	3.9
75 – 79	52	7.3	3.8	3.2	3.1
80 – 84	35	4.9	2.9	2.4	2.4
85 – 89	21	2.9	1.8	1.5	1.5
90 Plus	14	2.0	0.9	0.7	0.8

Diversity

- The 2011 Census showed Bucknell Parish had a black and minority ethnic group population of 3 (0.42%). The largest broad ethnic group is 'Mixed' (within this the largest group is 'White and Black African').
- When asked about their religion 26.1% (187 people) identified themselves as having no religion or did not state it on the form. The majority of people (73.5%) identified themselves as Christian and 0.4% (3 people) identified themselves as having an alternative religion.
- The 2011 Census showed that there were no people in the parish who could not speak English well and no people who could not speak English at all.

Population Age Structure

- Early years: 2.8% (20 children) of the population were aged 0 to 4 years in March 2011. This compares with 5.1% at County level, 6.3% regionally and 6.3% nationally.
- School age: 13.9% (100 children) of the population were aged 5 to 17 years in March 2011. This compares with 14.9% at County level, 15.8% regionally and 15.1% nationally.

- Working age: 52.4% (376 people) of the population were aged 18 to 64 years in March 2011. This compares with 59.3% at County level, 61.0% regionally and 62.3% nationally.
- Retirement age: 30.8% (221 people) of the population were aged 65 and over in March 2011. This compares with 20.7% at County level, 16.9% regionally and 16.3% nationally.
- Over 85 year olds: 4.9% (35) of the population were aged 85 and over in March 2011. This compares with 2.7% at County level, 2.2% regionally and 2.2% nationally.

Car Ownership

- The 2011 Census showed that 29 households (8.5%) did not own a car and subsequently are reliant on other forms of transport such as public transport services. In total 513 cars are owned by households resident in the place plan area.

General Health

The 2011 Census asked three questions relating to health and the provision of unpaid care. The questions relate to whether people felt their general health was good, whether they looked after or gave help or support to other family members, friends, neighbours or others and lastly whether their day to day activities were limited because of a health problem or disability.

At the time of the 2011 Census 38% of people in Bucknell said that they felt they were in “Very Good Health”, this compares to 46% for Shropshire as a whole.

1.6% reported that they were in “Very Bad Health”. This is slightly higher than the overall result for Shropshire (1%).

Provision of Unpaid Care

The question asked “do you look after, or give any help or support to family members, friends, neighbours or others because of either; a long term physical or mental ill health/disability? or because of problems related to old age?”

At the time of the Census 8% said that they were providing 1 to 19 hours of unpaid care a week. This is slightly higher than the Shropshire figure of 7%.

2% said they provided between 20 and 49 hours per unpaid care. This is slightly higher than the Shropshire figure of 1%.

4% said they provided over 50 hours of unpaid care. This is slightly higher than the figure for Shropshire as a whole (2%) and England & Wales (2%).

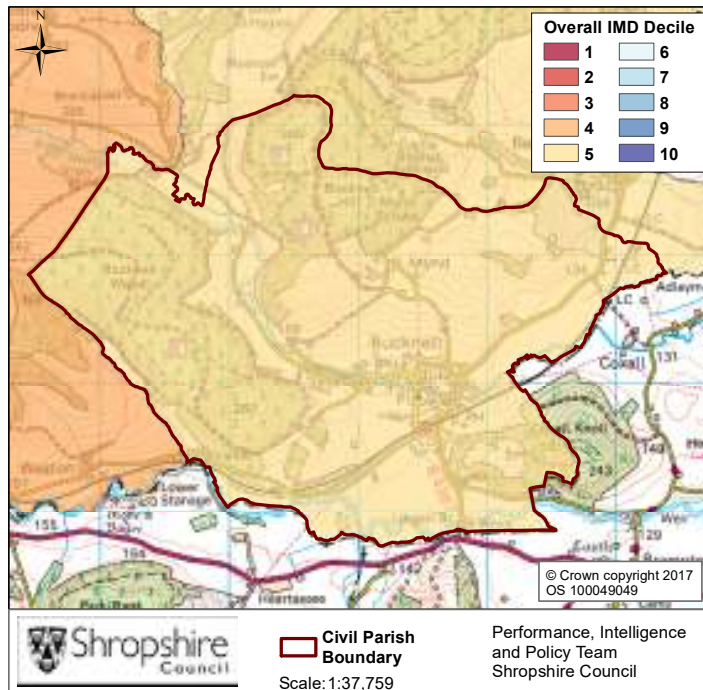
Long Term Illness or Disability

The Census asked “Are your day-to-day activities limited a lot due to a health problem or disability which has lasted, or is expected to last, at least 12 months?”

10% said that their day-to-day activities limited a lot due to a health problem or disability. This is higher than the figure for Shropshire as a whole and that of 9% for England and Wales.

The percentage who reported their day-to-day activities were limited a little was 15%. This is slightly higher than the figure of 10% for Shropshire as a whole.

Index of Multiple Deprivation



The lower super output area that covers Bucknell Parish falls within Percentile 5 nationally.

Percentile 1 is the most deprived nationally and Percentile 10 the least deprived nationally.

Source: IMD 2015, Department for Communities and Local Government, © Crown Copyright 2017

Housing Data:

- There were 343 households in Bucknell at the time of the 2011 Census.
- The parish had 717 usual residents and covers an area of 989 hectares.
- 188 households were owner occupiers (owned outright) equating to 54.8% of all households. There were 56 households (16.3%) who owned their home with a mortgage or loan.
- There were 26 households (7.6% of all households) that privately rented their home from a landlord. There were also 3 households (0.9% of all households) who privately rented from a landlord classified as 'Other'.
- 3 households were renting social housing from the Council totalling 0.9% of all households. There were also 47 households (13.7%) renting social housing from 'Other' sources.
- In Bucknell there were 227 detached dwellings representing 62.0% of all dwellings. There were also 86 semi-detached and 42 terraced dwellings equating to 23.5% and 11.5% respectively.
- 21.9% of all households were one person pensioner households.
- 18.9% of households in the area had dependent children. The number of married couple households with dependent children was 42 and the number of cohabiting couples with dependent children was 13.
- There were 6 lone parent households (with dependent children), which equates to 1.7% of all households.

Unemployment and Labour Market

Unemployment

- At the time of the Census, there were 3 residents who were unemployed but available for work. This is 0.6% of the 16-74 year old population, compared to 3.3% for Shropshire.
- No young people (aged 16-24) were unemployed, 2 who were aged 50 to 74 were unemployed.
- 66.6% of all unemployed people were classed as long-term unemployed in 2011. This is the equivalent of 2 people.

Labour Force

- 310 Bucknell residents aged 16-74 are economically active.
- 26.1% of the Bucknell population has level 4 or above qualifications compared with 27.5% in Shropshire and 27.4% in England.
- The number with no formal qualifications at all stands at 161 people – at 26.3% of the population (aged over 16), this compares with the county average of 22.5%.
- 28.8% of the population work in standard occupation classifications 1-3 (managers, directors and senior officials, professional, associate professional and technical) and 22.2% work in standard occupation classifications 8 and 9 (process, plant and machine operatives and elementary occupations).

Travel to Work (Census 2011)

- 16.3% of the population in Bucknell are self-employed, and 8.4% work from home compared with 5.6% for Shropshire.
- The car is used as the main means of travel to work for 46.5%, while 1.0% use public transport.