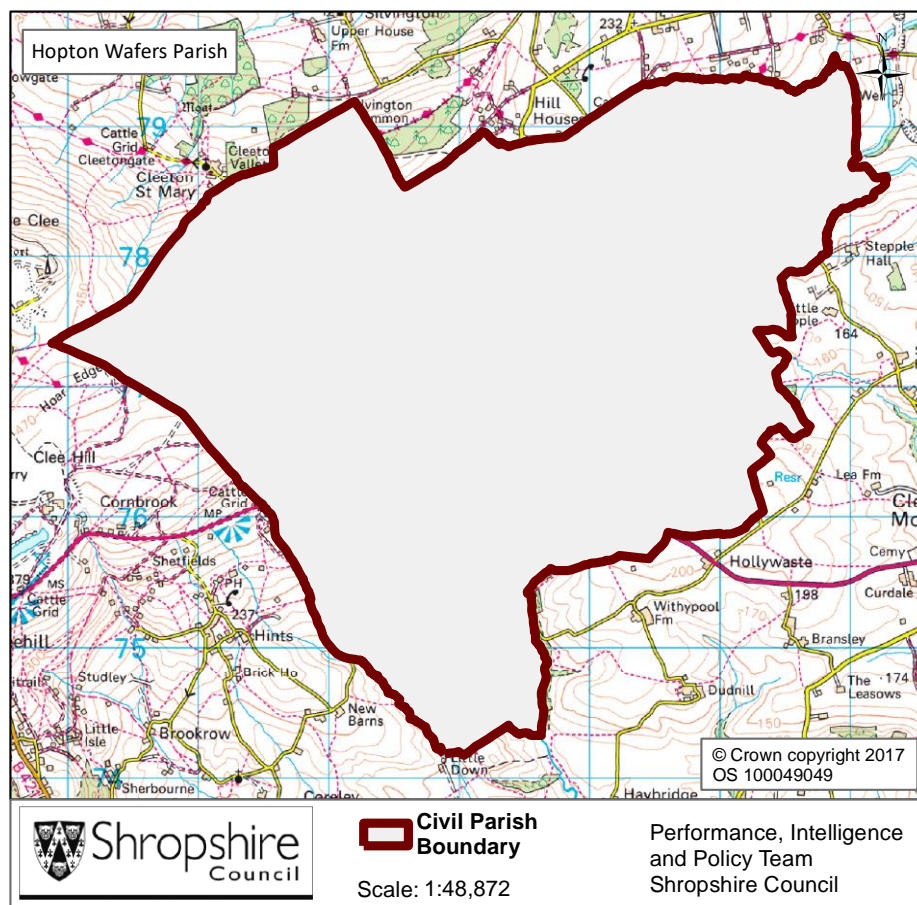


## Hopton Wafers Parish



### Population

Key Facts:	Hopton Wafers Parish
Area:	1777.2 hectares
Population Density:	0.40 persons per hectare
Total Population	753 (379 males, 374 females)
Household Population:	720 (95.6%)
Households: Dwellings:	319 340
Communal Establishment no. / population	2 Communal Establishments 33 residents (4.4% of total population)

Source: 2011 Census, National Statistics.

Please note: Ward boundary changes in 2009 mean it is not possible to compare over time.

## Population Age Structure

- Early years: 2.1% (16 children) of the population were aged 0 to 4 years in March 2011. This compares with 5.1% at County level, 6.3% regionally and 6.3% nationally.
- School age: 11.7% (88 children) of the population were aged 5 to 17 years in March 2011. This compares with 14.9% at County level, 15.8% regionally and 15.1% nationally.
- Working age: 53.4% (402 people) of the population were aged 18 to 64 years in March 2011. This compares with 59.3% at County level, 61.0% regionally and 62.3% nationally.
- Retirement age: 32.8% (247 people) of the population were aged 65 and over in March 2011. This compares with 20.7% at County level, 16.9% regionally and 16.3% nationally.
- Over 85 year olds: 5.6% (42) of the population were aged 85 and over in March 2011. This compares with 2.7% at County level, 2.2% regionally and 2.2% nationally.

	Total Population	% of Total Population			
		Hopton Wafers	Shropshire	West Midlands	England
All ages	753	100.0	100.0	100.0	100.0
0 – 4	16	2.1	5.1	6.3	6.3
5 – 9	28	3.7	5.1	5.8	5.6
10 – 14	36	4.8	5.9	6.1	5.8
15 – 19	35	4.6	6.2	6.6	6.3
20 – 24	18	2.4	5.4	6.8	6.8
25 – 29	27	3.6	5.1	6.5	6.9
30 – 34	24	3.2	5.0	6.1	6.6
35 – 39	31	4.1	5.8	6.4	6.7
40 – 44	48	6.4	7.2	7.3	7.3
45 – 49	45	6.0	7.7	7.2	7.3
50 – 54	47	6.2	6.9	6.3	6.4
55 – 59	80	10.6	6.6	5.7	5.7
60 – 64	71	9.4	7.3	6.0	6.0
65 – 69	62	8.2	6.2	5.0	4.7
70 – 74	58	7.7	4.9	4.0	3.9
75 – 79	49	6.5	3.8	3.2	3.1
80 – 84	36	4.8	2.9	2.4	2.4
85 – 89	26	3.5	1.8	1.5	1.5
90 Plus	16	2.1	0.9	0.7	0.8

Source: 2011 Census, National Statistics.

Please note: Ward boundary changes in 2009 mean it is not possible to compare over time

### Diversity

- The 2011 Census showed Hopton Wafers Parish had a black and minority ethnic group population of 8 (1.06%). The largest broad ethnic group is 'Asian' (within this the largest group is 'Other Asian').
- When asked about their religion 23.4% (176 people) identified themselves as having no religion or did not state it on the form. The majority of people (76.1%) identified themselves as Christian and 0.5% (4 people) identified themselves as having an alternative religion.
- The 2011 Census showed that 0 people could not speak English well and 0 people could not speak English at all.

### Car Ownership

- The 2011 Census showed that 19 households (6.0%) did not own a car and subsequently are reliant on other forms of transport such as public transport services. In total 568 cars are owned by households resident in the place plan area.

## **Hopton Wafers Parish**

### **General Health**

The 2011 Census asked three questions relating to health and the provision of unpaid care. The questions relate to whether people felt their general health was good, whether they looked after or gave help or support to other family members, friends, neighbours or others and lastly whether their day to day activities were limited because of a health problem or disability.

At the time of the 2011 Census 40% of people in Hopton Wafers said that they felt they were in "Very Good Health", this compares to 46% for Shropshire as a whole.

1.8% reported that they were in "Very Bad Health". This is slightly higher than the overall result for Shropshire (1%).

### **Provision of Unpaid Care**

The question asked "do you look after, or give any help or support to family members, friends, neighbours or others because of either; a long term physical or mental ill health/disability? or because of problems related to old age?"

At the time of the Census 9% said that they were providing 1 to 19 hours of unpaid care a week. This is slightly higher than the Shropshire figure of 7%.

1% said they provided between 20 and 49 hours per unpaid care. This is in line with the Shropshire figure of 1%.

3% said they provided over 50 hours of unpaid care. This is slightly higher than the figure for Shropshire as a whole (2%) and England & Wales (2%).

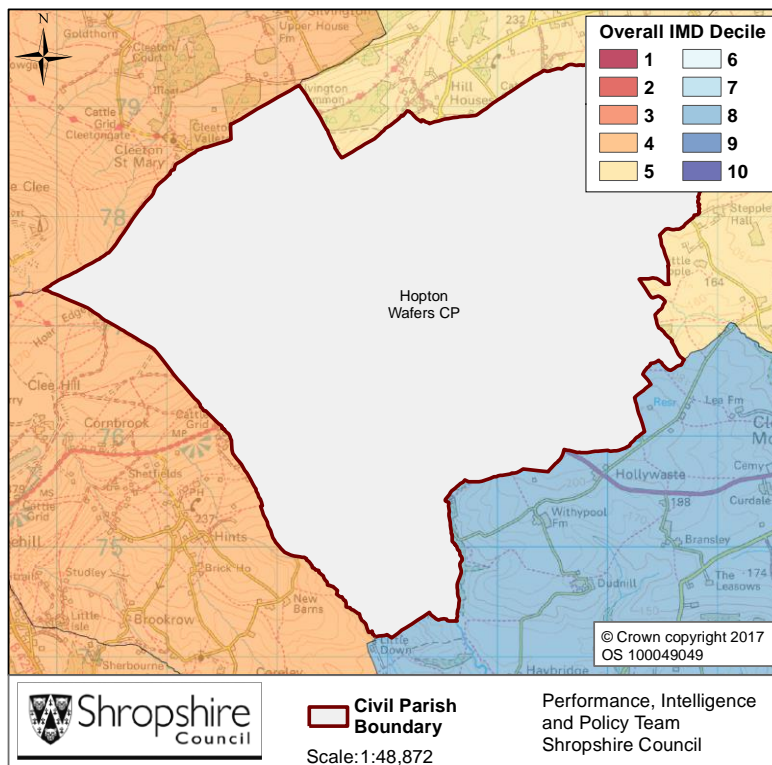
### **Long Term Illness or Disability**

The Census asked "Are your day-to-day activities limited a lot due to a health problem or disability which has lasted, or is expected to last, at least 12 months?"

13% said that their day-to-day activities limited a lot due to a health problem or disability. This is higher than the figure for Shropshire as a whole and that of 9% for England and Wales.

The percentage who reported their day-to-day activities were limited a little was 12%. This is slightly higher than the figure of 10% for Shropshire as a whole.

## Index of Multiple Deprivation



The lower super output areas that cover Hopton Wafers Parish fall within Decile 3 nationally.

Decile 1 is the most deprived nationally and Decile 10 the least deprived nationally.

*Source: IMD 2015, Department for Communities and Local Government, © Crown Copyright 2017*

### Housing Data:

- There were 319 households in Hopton Wafers at the time of the 2011 Census.
- The parish had 753 usual residents and covers an area of 1777 hectares.
- 179 households were owner occupiers (owned outright) equating to 56.1% of all households. There were 94 households (29.5%) who owned their home with a mortgage or loan.
- There were 31 households (9.7% of all households) that privately rented their home from a landlord. There were also 2 households (0.6% of all households) who privately rented from a landlord classified as 'Other'.
- 0 households were renting social housing from the Council totalling 0.0% of all households. There were 4 households (1.3%) renting social housing from 'Other' sources.
- In Hopton Wafers there were 215 detached dwellings representing 63.2% of all dwellings. There were also 44 semi-detached and 14 terraced dwellings equating to 12.9% and 4.1% respectively.
- 12.2% of all households were one person pensioner households.
- 20.0% of households in the area had dependent children. The number of married couple households with dependent children was 40 and the number of cohabiting couples with dependent children was 8.
- There were 8 lone parent households (with dependent children), which equates to 2.5% of all households..

## **Unemployment and Labour Market**

### Unemployment

- At the time of the Census, there were 6 residents who were unemployed but available for work. This is 1.1% of the 16-74 year old population, compared to 3.3% for Shropshire.
- 2 young people (aged 16-24) were unemployed, plus a further 1 who were 50 to 74.
- Long term unemployment is also an issue – 66.67% of all unemployed people were classed as long-term unemployed in 2011. This is the equivalent of 4 people.

### Labour Force

- 354 Hopton Wafers residents aged 16-74 are economically active.
- 26.8% of the Hopton Wafers population has level 4 or above qualifications compared with 27.5% in Shropshire and 27.4% in England.
- The number with no formal qualifications at all stands at 206 people – at 30.8% of the population (aged over 16), this compares with the county average of 22.5%.
- 43.1% of the population work in standard occupation classifications 1-3 (managers, directors and senior officials, professional, associate professional and technical) and 14.5% work in standard occupation classifications 8 and 9 (process, plant and machine operatives and elementary occupations).

### Travel to Work (Census 2011)

- 18.5% of the population in Hopton Wafers are self-employed, and 10.7% work from home compared with 5.6% for Shropshire.
- The car is used as the main means of travel to work for 45.7%, while 2.4% use public transport.