



# **Place Plan for Albrighton & surrounding area**

**2015/2016**

# CONTENTS

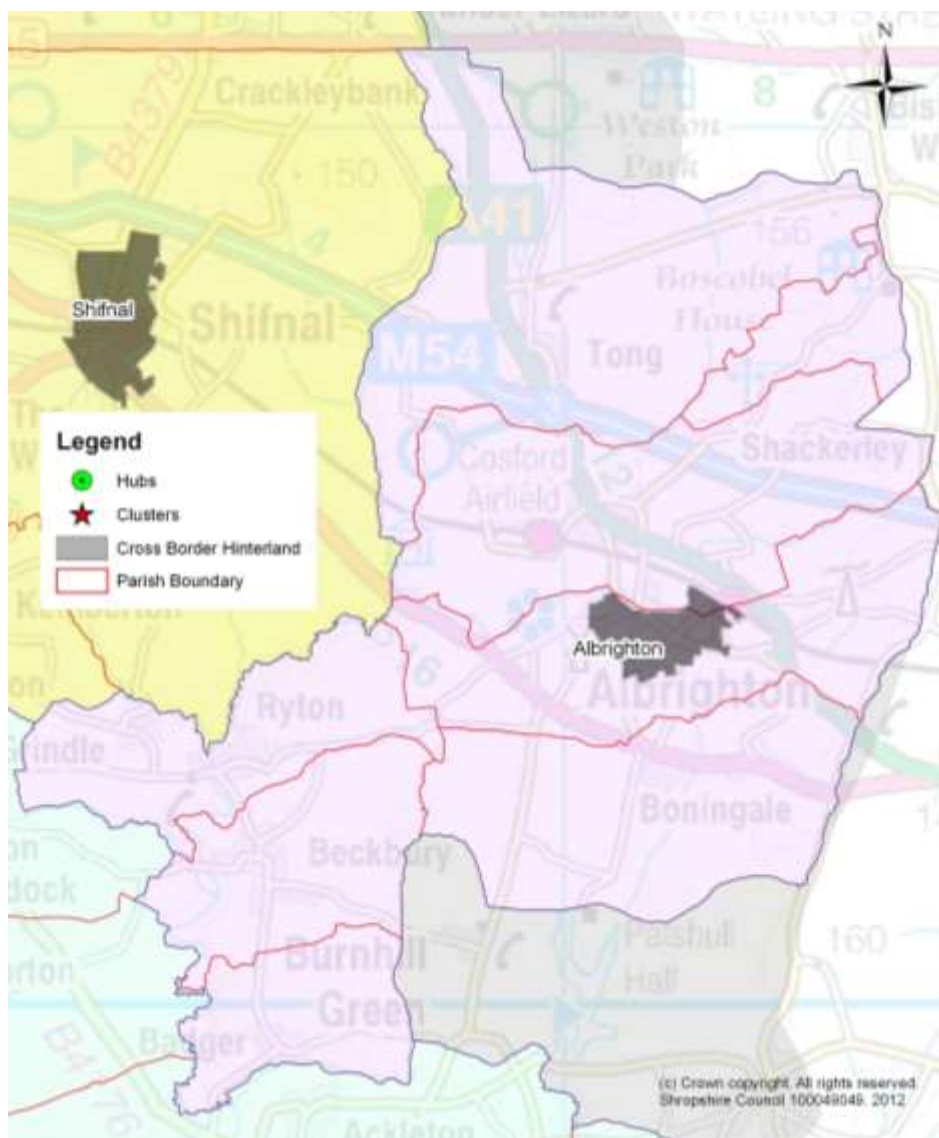
CONTENTS .....	1
1. INTRODUCTION .....	2
1.1 What is this document? .....	2
1.2 What are Place Plans? .....	2
1.3 How are the Place Plans used? .....	3
1.4 How are the Place Plans structured? .....	3
1.5 Place Plan links to planning and locality commissioning .....	4
1.6 Supporting Shropshire’s economic growth and the strategic priorities of the...4 Marches LEP	
2. COMMUNITY LED PLANNING IN ALBRIGHTON AREA .....	6
2.1 Albrighton Place Plan Area.....	6
2.2 Summary of community priorities within Albrighton Town .....	6
2.3 Summary of community priorities within the surrounding area .....	8
3. DEVELOPMENT AND ASSOCIATED INFRASTRUCTURE REQUIREMENTS.....	10
3.1 Vision to guide development in the Albrighton Place Plan Area.....	10
3.2 Associated Infrastructure Requirements.....	11
Albrighton Town – Development related infrastructure requirements ....	12
Rural Hinterland – Development related infrastructure requirements ....	16
4. WIDER INVESTMENT PRIORITIES IN ALBRIGHTON PLACE PLAN AREA.....	24
Albrighton Town – Wider investment priorities .....	24
Rural Hinterland – Wider investment priorities .....	31
APPENDIX A: COMMUNITY ENGAGEMENT AND CONSULTATION FOR ALBRIGHTON PLACE PLAN AREA .....	39
Community Led Plans .....	39
Neighbourhood Plan ‘Light’ .....	40
Local Joint Committee.....	40
Other Community Consultations .....	41
APPENDIX B: ALBRIGHTON PROFILE.....	45
Social and Demographic.....	45
The Economy.....	45
Households and Housing .....	47
Transport and Infrastructure.....	47
Natural and historic environment .....	48
Further information about Albrighton available online: .....	48

# 1. INTRODUCTION

## 1.1 What is this document?

- 1.1.1 This document is the *Albrighton and surrounding area Place Plan*. It summarises and prioritises the local infrastructure needs which are required to support the sustainable development of the area; and identifies the wider investment needs to assist delivery of the community's vision and aspirations.
- 1.1.2 The area covered within this plan is identified within the Figure below.

Albrighton and surrounding area Place Plan



## 1.2 What are Place Plans?

- 1.2.1 The Place Plans are aimed at ensuring the delivery of sustainable places in Shropshire. They recognise that sustainability is based on many different factors and that what is needed to make and maintain a sustainable community in one place may differ in another. As such, the Place Plans list the priorities, needs and aspirations on a place by place basis for each of Shropshire's communities.

- 1.2.2 There are 18 Place Plans in Shropshire. Each Place Plan is based around one of Shropshire's 18 main towns and its wider hinterland, which comprises Community Hubs, Community Clusters and rural parishes within the surrounding countryside (Rural Hinterland).
- 1.2.3 The Place Plans are 'live' documents that are informed by an 'annual conversation' with Town and Parish Councils, infrastructure and service providers. As such, the Place Plans provide an up to date record of infrastructure and investment needs within an area and those priorities which should assist in providing a focus for delivery in the year ahead.

### **1.3 How are the Place Plans used?**

- 1.3.1 The Place Plans provide an important evidence base to:
- **Support delivery of Shropshire's Local Plan-** *ensuring new development is supported by the necessary infrastructure, including identifying requirements for development contributions.*
  - **Assist in informing planning decisions-** *forming a material consideration for planning applications.*
  - **Coordinate actions and inform difficult decisions-** *where future resources should be targeted, by Shropshire Council and partner organisations.*
  - **Inform local partnership working-** *ensuring an agreed set of local priorities.*
  - **Assist with external funding bids-** *providing evidence of local investment needs and priorities*
  - **Provide transparency to local communities-** *identifying where local investment is being targeted.*

### **1.4 How are the Place Plans structured?**

- 1.4.1 Each Place Plan consist of five key sections, these are:

#### **1. Introduction**

The role of Place Plans and the communities covered within the Development Priorities.

#### **2. Community led planning within the Place Plan area**

Summary of the community vision and priorities within the Place Plan area identified through community led plans and wider consultation work with the local community.

#### **3. Development and associated infrastructure requirements**

Summary of the development plan for the area, as identified in Shropshire's Local Plan and the associated infrastructure needs and priorities required to ensure this growth is sustainable, including a plan of how these may be delivered.

#### **4. Wider investment priorities within the Place Plan area**

Summary of the identified investment needs and priorities required to support the wider sustainability of communities within the Place Plan area.

#### **5. Place Plan Profile**

Summary of key data for the Place Plan area, to provide background context to the locality and assist in informing future decision making on infrastructure and investment priorities. This is provided in Appendix B.

## **1.5 Place Plan links to planning and locality commissioning**

### **Planning**

- 1.5.1 The Place Plans form part of Shropshire's Local Plan, outlining the infrastructure requirements which are needed to support the level and location of development, as outlined in Shropshire's adopted Core Strategy and the Site Allocations and Management of Development (SAMDev) Plan.
- 1.5.2 As Shropshire's Local Plan seeks to link new development to the provision of local community benefits, many of the policies within the Core Strategy and SAMDev Plan refer to the need to consider the local aspirations set out within the Place Plans. As such, the Place Plans are an important material consideration for planning applications.
- 1.5.3 In addition, the Place Plans provide the framework for the targeted use of developer contributions, including design, S106 and CIL. In particular, the infrastructure priorities identified within the Place Plans informs the content of the CIL Regulation 123 List, which sets out those infrastructure needs which will be delivered through the use of CIL.

*Please Note: The CIL Regulation 123 List is updated annually, and infrastructure not included within this list, can still benefit from CIL funds in the future.*

### **Locality Commissioning**

- 1.5.4 Shropshire Council is committed to locality commissioning whereby there is a strong focus on working with local communities to find out what is important to them and ensuring local services are targeted appropriately. The Place Plans are central to Shropshire's locality commissioning approach, as they provide the local evidence base of investment needs and priorities.

## **1.6 Supporting Shropshire's economic growth and the strategic priorities of the Marches LEP**

- 1.6.1 The Marches Local Enterprise Partnership includes a number of priorities to drive strategic economic growth in Shropshire. The Place Plans help to support delivery of the LEP's economic growth priorities which are:

**Supporting Business** - We will create an exceptional business support environment for aspiring growth businesses through access to finance and incentives to innovate. We will promote the Marches as a business investment location

**Physical Infrastructure** - We will provide a compelling business investment offer with a progressive planning framework and infrastructure fit for tomorrow's business needs. This priority will include supporting the environment.

**Skills Investment** - We will support employers to develop themselves and their workforce and to provide employment opportunities for young people.

**Low Carbon Economy** - We will drive the transition to a high value, low carbon economy, maximising the opportunity in new technologies, reducing environmental costs to business and recognising our environment as an economic asset.

**Social Inclusion** - We will support socially excluded and marginalised groups by removing barriers to their participation in activities that will improve their economic well-being.

- 1.6.2 The needs at a local level for fostering enterprise, business start-up, business competitiveness and expansion, investor development, inward investment, key account management and high growth business sector development is supported through a package of free business support, a wide range of financial incentives and the provision of economic infrastructure such as business parks, industrial estates and small and medium sized work-shops and incubator office space. Information is available from Shropshire Council's Business and Enterprise Team.

#### **Assisted Area status**

- 1.6.3 Parts of Albrighton are within an Assisted Area. Assisted areas are places where the government can offer additional financial support to businesses under EU state aid rules, known as regional aid. Assisted Areas is a state aid that can be used to support the economic development of certain disadvantaged areas within the EU. Increased levels of regional investment aid may be granted to small and medium sized enterprises located within the disadvantaged areas. The current Assisted Areas map and geography came into effect on 1 July 2014 and will remain until 31 December 2020.

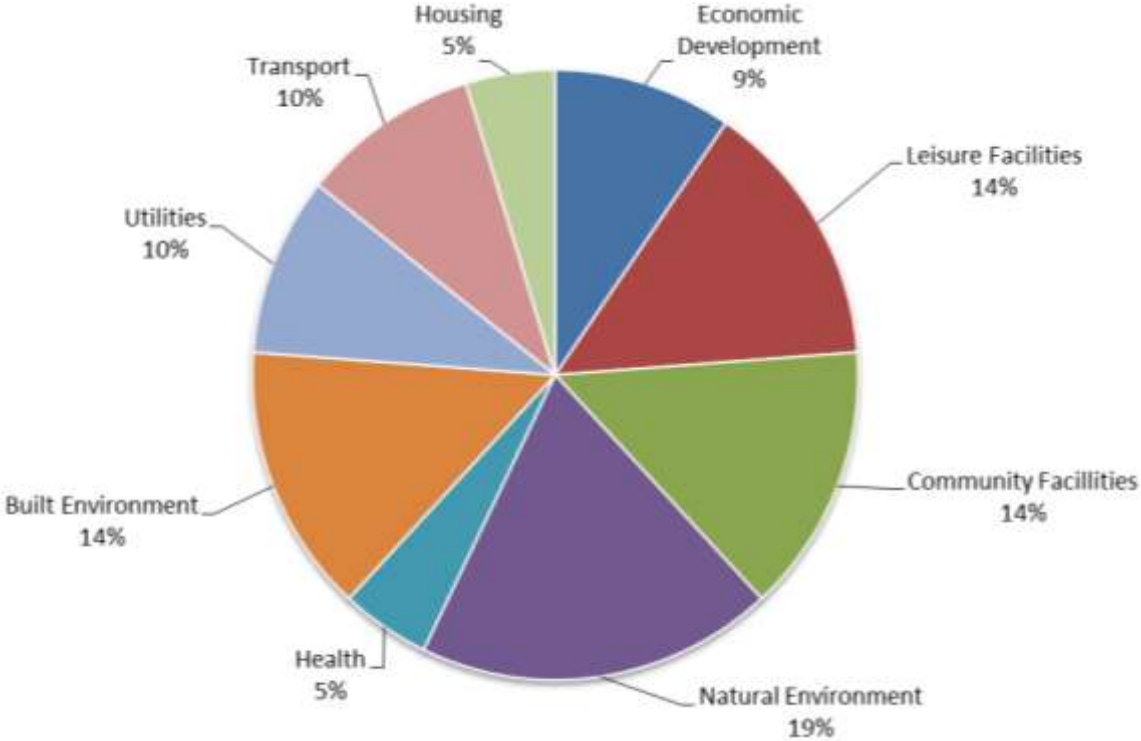
# 2. COMMUNITY LED PLANNING IN ALBRIGHTON AREA

## 2.1 Albrighton Place Plan Area

- 2.1.1 A number of community led plans have been developed for local communities within the Albrighton Place Plan area. These provide a key source of information when considering infrastructure and investment needs within an area and as such are an important basis for the Place Plans.
- 2.1.2 Appendix A provides detailed information on the community’s needs and priorities identified through the various community led plans; Local Joint Committees; and other community consultations that have occurred within the Place Plan area.
- 2.1.3 However, to provide a broad understanding of the areas of interest, the below overview summarises those community priorities and key areas of interest set out in detail in Appendix A. This summary has been split between:
  - Albrighton Town; and
  - Surrounding Area (including Hubs, Clusters and rural parishes).

## 2.2 Summary of community priorities within Albrighton Town

Summary of community priorities - by type, identified through community consultation in Albrighton (as identified in Appendix A).



2.2.1 The above summary can be broken down into the following key headlines:

### **Health & Well-being**

- Provision of a replacement GP surgery on the edge of Albrighton as an exception to normal Green Belt policies, in order to provide for the community's needs and improve social sustainability of Albrighton.

### **Economy & Tourism**

- Albrighton village centre (as defined), will be supported by a presumption in favour of retail proposals and against changes of use from use class A1 (Shops), A2 (Finance/Professional Services), A3 (Restaurants/Cafes) or A4 (Drinking Establishments).
- Within the primary shopping area, proposals for a change of use from use class A1 (Shops), A2 (Finance/Professional Services), A3 (Restaurants/Cafes) or A4 (Drinking Establishments) at ground floor level to Class A5 (Hot Food Take-Aways) will be strongly resisted where the proportion of units in A5 use exceeds 10%.
- Shopfront signage within the primary shopping area should be in sympathy with the upper storeys of the buildings and adjoining facades, with use of traditional materials.

### **Development**

- Large-scale new development should seek to include footpaths and cycleways to link with the existing parts of the village.
- Any development proposals which provide additional employment will be supported, subject to the other policies in this plan and in the SAMDev DPD.
- Provision of additional employment land should be considered as part of any potential review of Green Belt boundaries within the Development Plan.
- New buildings should, wherever possible and appropriate, respect and reflect the character of the buildings around them. New buildings should seek to use similar architectural features to nearby older buildings.

### **Environment**

- Subject to Highways Authority requirements, new pedestrian crossings will be sited at appropriate locations along the High Street.
- Development is encouraged to preserve and, if possible extend the hedgerow network.
- Developments are encouraged to plant native species of trees.
- Development that adversely affects the environment of the Village Green area of the High Street or the ponds and streams in Albrighton will be strongly resisted.
- Wherever possible, new development should allow views out of the village to the surrounding countryside.
- New developments should include the provision of open spaces that reflect the 'village green' character of the older parts of Albrighton.
- Proposals to provide further off-street car parking for public use close to the High Street will be considered favourably.

### **Children & Young People**

- Local Equipped Areas for Play and Neighbourhood Equipped Areas for Play.
- Youth shelters and a Multi-Use Games Area (MUGA).

## Heritage

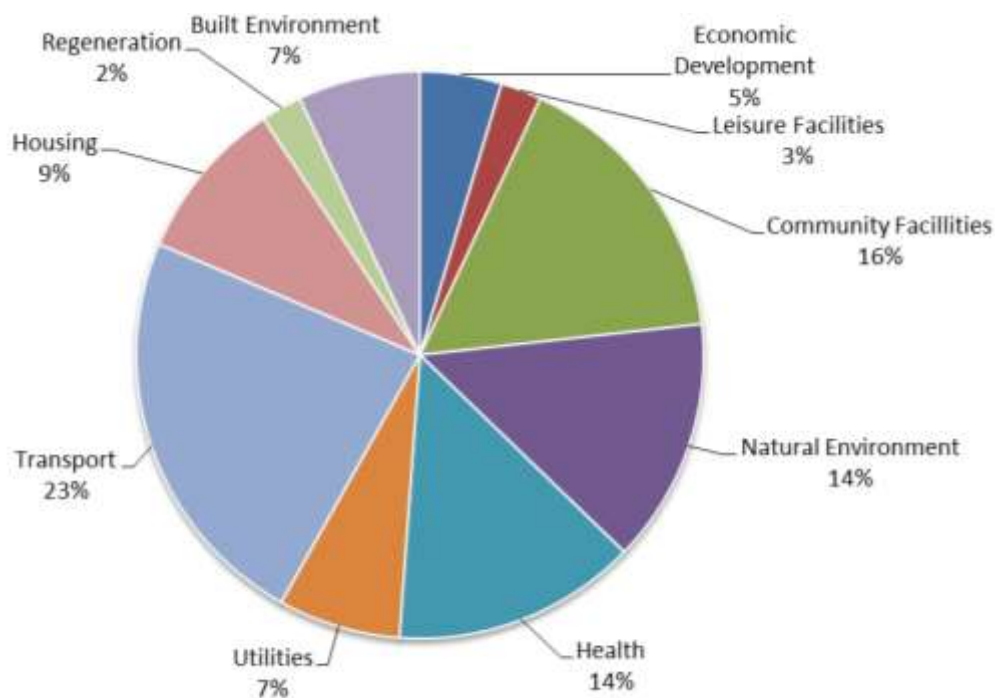
- Development should recognise and respect distinctive and historic settlement patterns.
- New buildings should be in keeping with the present pattern of the village.

## Culture, Sport & Leisure

- Leisure centre/sports hall – minimum four badminton court size, ideally able to incorporate meeting space for youth groups and nursery provision.
- Adult football pitch.

### 2.3 Summary of community priorities within the surrounding area

Summary of community priorities - by type, identified through community consultation in Albrighton surrounding area (as identified in Appendix A).



2.2.2 The above summary can be broken down into the following key headlines:

## Health & Well-being

- Waste.
- Road safety, speeding and HGVs.
- Police and community safety.
- Streetscene and litter – Keep Britain Tidy pilot scheme.
- Traffic management for events.
- Correct use of byways and footpaths.
- The re-opening of the operating theatre at Bridgnorth Hospital.

## Economy

- Local businesses should be supported by measures to encourage tourism and particularly overnight visitors, including an increase in local hotel capacity and improvements to the character of the area including measures to limit the number of hot food takeaways.

## **Infrastructure**

- Community and Road Safety.
- Community Identity and Communication.
- Traffic management for events.
- Specific reference should be made to Cosford and the provision of land enabling the training centre to expand.
- Improvements to direct rail services, and major trunk road routes in the county, such as the A41, A5 and A49.
- Small scale development in small villages.

## **Environment**

- Appearance of the Parish
- Affordable housing.
- Knotweed in the river.
- Preservation of the existing environment.
- Surface drainage of flood water.
- Affordable housing.

## **Life**

- Improved community spirit.
- Need for a new children's playground.
- Broadband.
- Gas supply.

### 3. DEVELOPMENT AND ASSOCIATED INFRASTRUCTURE REQUIREMENTS

#### 3.1 Vision to guide development in the Albrighton Place Plan Area

3.1.1 Shropshire’s Core Strategy (March 2011) sets out the strategic vision and objectives to guide development and growth for the period 2006-2026. This includes a vision for *Albrighton (Policy CS3)* and the surrounding *Hubs, Clusters (Policy CS4)* and *Rural Hinterland (Policy CS5)*, as follows:

**ALBRIGHTON TOWN (Core Strategy Policy CS3)**

*Albrighton will have development to meet local needs, respecting their location in the Green Belt. No changes will be made to Green Belt boundaries. Some of the development to meet the needs of returning military personnel will be accommodated in Albrighton, if required.*

**COMMUNITY HUBS (Core Strategy Policy CS4)**

*Community Hubs will have development that helps to rebalance rural communities by providing facilities, economic development or housing for local needs that is of a scale appropriate to the settlement.*

**COMMUNITY CLUSTERS (Core Strategy Policy CS4)**

*Community Clusters are comprised of two or more smaller settlements, where the combined settlements offer a range of services contributing to a sustainable community. Community Clusters will have development that helps to rebalance rural communities by providing facilities, economic development or housing for local needs that is of a scale appropriate to the settlement.*

**RURAL HINTERLAND (CORE STRATEGY POLICY CS5)**

*New development will be strictly controlled in accordance with national planning policies protecting the countryside and Green Belt. Subject to further controls over development that apply to the Green Belt, development proposals on appropriate sites which maintain and enhance countryside vitality and character will be permitted where they improve the sustainability of rural communities by bringing local economic and community benefits.*

3.1.2 Within the Albrighton Place Plan area, there are currently no Community Hubs and Cluster Settlements. Therefore, all remaining settlements within the Place Plan area form part of the Rural Hinterland.

3.1.3 Detailed proposals to deliver the strategic vision within the Core Strategy are contained within the Site Allocations and Management of Development (SAMDev) document which together with the Core Strategy forms Shropshire’s Local Plan for 2006-2026. The SAMDev Plan sets out the following detailed development policies for the Albrighton Place Plan area:

Settlement	Housing guideline	Employment guideline	Allocations
<b>Market Town</b>			
Albrighton	250 dwellings	0 hectares	<ul style="list-style-type: none"> <li>• Land at White Acres (20 dwellings)</li> <li>• Land east of Shaw Lane (180 dwellings).</li> <li>• There are no employment sites allocated.</li> </ul>

## 3.2 **Associated Infrastructure Requirements**

3.2.1 To ensure new development is sustainable, it is important that it is supported by the necessary infrastructure.

3.2.2 The below table details the infrastructure requirements which have been identified as needed to support the level and location of development for the Albrighton Place Plan, as set out above. These infrastructure requirements have been identified through:

- Annual Place Plan ‘conversation’ with Town and Parish Councils and Shropshire Council elected Members
- Annual Place Plan ‘conversation’ with local infrastructure and service providers.
- Discussions with stakeholders regarding specific development sites

3.2.3 Whilst it is important that the Place Plan sets out all known infrastructure requirements, it is vital that these are prioritised in order to provide a focus for delivery. Core Strategy Policy CS9 (Infrastructure Contributions) provides the framework for prioritising infrastructure requirements, as follows:

- 1. Critical Infrastructure:** the essentials without which development cannot take place, such as utilities, water management and safe access.
- 2. Priority Infrastructure:** that which has been identified by the community as a particular priority at that point in time.
- 3. Key Infrastructure:** all other infrastructure not included in the previous two categories.

3.2.4 The below table also sets out the recommended mechanism for delivery, taking into account the roles and responsibilities of delivery partners and the regulations governing the use of different funding streams, including developer contributions.

3.2.5 However, whilst the Place Plan provide a framework for delivery, enabling the coordination of resources around an agreed set of priorities, it is important to recognise that not all the infrastructure items listed below may be deliverable at a particular point in time.

3.2.6 For infrastructure items to be delivered through the use of CIL funding (in full or part), it would usually be identified within the annual CIL Regulation 123 List.

# Albrighton Town – Development related infrastructure requirements

Infrastructure Requirement	Level of Priority	Delivery Partner(s)	Timing of Delivery	Potential Cost / Funds Secured	Potential Funding		Notes
					Wider Sources	Developer Contributions	
<b>ALBRIGHTON TOWN AND PARISH</b>							
<b>HOUSING AND COHESIVE, SUSTAINABLE COMMUNITIES</b>							
Affordable housing provision	PRIORITY	Shropshire Council, Homes and Communities Agency, Registered Providers	Ongoing	N/A	N/A	Section 106	Within Shropshire, it is the Council's aspiration that all developments contribute to a sustainable mix of dwelling types, sizes and tenures. This will be either through on-site provision or payment of a sum to be used for provision of affordable housing.
<b>ECONOMIC INVESTMENT AND OPPORTUNITY</b>							
Facilitation of ICT/broadband technologies	KEY	Shropshire Council, Private sector delivery partner, Town and Parish Councils 'Commercial Infrastructure Providers'		Initially £16.4 million. £8.2million secured from BDUK. £8.2 million secured from Shropshire Council.		CIL (Local)	The Connecting Shropshire aims to provide a minimum of 2 Mbps to all of Shropshire and as much superfast broadband as possible. The project will deliver to those communities that are not going to get either basic broadband or superfast broadband under the private sector rollout. This is a community priority for many towns, villages and rural areas of Shropshire.
<b>SOCIAL AND COMMUNITY INFRASTRUCTURE</b>							
Review of primary school places to ensure sufficient provision	PRIORITY	Shropshire Council	N/A	N/A	N/A	N/A	An updated assessment of the effect on primary school places locally has been made, based on estimated annual levels of housing with delivery spread evenly over the remaining plan period. This currently indicates that capacity will exist in the town overall to meet the demand. It should be noted that, should decisions on the future use of Cosford result in a significant number of additional school age children, school place requirement will need to be revisited
Review of secondary school places to	PRIORITY	Shropshire Council	N/A	N/A	N/A	N/A	An updated assessment of the effect on school places locally has been made based

Infrastructure Requirement	Level of Priority	Delivery Partner(s)	Timing of Delivery	Potential Cost / Funds Secured	Potential Funding		Notes
					Wider Sources	Developer Contributions	
ensure sufficient provision							on proposed levels of development with delivery spread evenly over the Plan period. This currently suggests that capacity will exist to meet the demand in the town, with the displacement of out-of-area pupils over time. However, some accommodation may be required on a short-term basis whilst this trend evens out.
Provision of replacement GP Surgery	PRIORITY	NHS England, Through the Door to Healthy Living	2012-2015		NHS funding	CIL (Local)	GP surgery is a priority for replacement due to capacity/quality. Draft proposal has been submitted to the NHS for additional funding. Potential to integrate a healthy living centre type provision in any new health premises. The Council's Extended Schools Team has identified the potential for joint working between children's centres, healthy schools work at schools (HENRY- Health Exercise Nutrition for the Really Young) and other local and national health improvement needs and objectives to make best use of resources. Young parents in Cosford area have already expressed an interest in a Young Parents Group which could be accommodated at the surgery.
On-site open space provision and maintenance to meet site design requirements and standards.	PRIORITY	Developers, Shropshire Council	Dependent on development	N/A		On-site design, Section 106	On-site design standards are identified within the Open Space Interim Planning Guidance (IPG) (Jan 2012) and Policy MD2 of the SAMDev Plan (not yet adopted).
Provision and maintenance of facilities and equipment for sport, recreation and leisure. This includes but is not limited to: <ul style="list-style-type: none"> <li>Outdoor sports facilities.</li> <li>Recreational</li> </ul>	PRIORITY	Shropshire Council, Town and Parish Councils	Dependent on development	N/A	Sport England, Fields in Trust	Neighbourhood Fund, CIL (Local)	Provision to meet assessed need. The Playing Pitch Strategy (PPS) has identified that Albrighton should have at least one playing pitch. Albrighton has a playing pitch with community use however the PPS has identified that improvements are needed to the quality of this pitch. The Parish Council has identified the need to: <ul style="list-style-type: none"> <li>Investigate the potential for shared use of community and sports amenities of</li> </ul>

Infrastructure Requirement	Level of Priority	Delivery Partner(s)	Timing of Delivery	Potential Cost / Funds Secured	Potential Funding		Notes
					Wider Sources	Developer Contributions	
facilities for children. • Allotments.							Birchfield School. • Secure changing facilities for sports activities. • Review of existing available outdoor play equipment, sandpits and picnic areas. • Maintain village greens.
Support Albrighton Flyer- community transport scheme	PRIORITY	Shropshire Council				CIL (Local)	Identified community priority. Locally run transport scheme which is vital to the community, especially its older residents.
<b>ENVIRONMENT AND CLIMATE CHANGE</b>							
Assessment of local flood risk	PRIORITY	Shropshire Council, Environment Agency, Severn Trent Water	Ongoing	c£30,000	Flood Defence Grant in Aid	CIL (Local)	The Local Flood Risk Management Strategy has identified that a number of properties in Albrighton may be at risk of flooding.
Production of Operational Flood Response Plan	PRIORITY	Shropshire Council, Environment Agency, Severn Trent Water	Ongoing	£5,000		Section 106	In accordance with the Local Flood Risk Management Strategy the operational flood response plans, produced from condition surveys of the land drainage systems, will flag who is responsible for the maintenance of the systems which serve communities. The aim is to promote community awareness of these drainage systems such that communities can be more resilient.
<b>TRANSPORT AND ACCESSIBILITY</b>							
Junction capacity, sustainability and safety improvements, where necessary, to facilitate specific development sites	CRITICAL	Shropshire Council				Section 106	To be determined as part of particular development proposals, as part of the planning application process
Local highway improvements, including speed and safety, public realm enhancements and sustainable travel	PRIORITY	Shropshire Council				CIL (Local)	
Additional access and	PRIORITY	Shropshire				CIL (Local)	Identified community priority. Preservation

Infrastructure Requirement	Level of Priority	Delivery Partner(s)	Timing of Delivery	Potential Cost / Funds Secured	Potential Funding		Notes
					Wider Sources	Developer Contributions	
car parking improvements at the station		Council					and enhancement of the temporary access ramp at Albrighton station with accompanying engineering work to the highway to make the exit from the ramp safe.
Resurfacing and possible extension of The Crown Car Park	PRIORITY	Parish Council				Neighbourhood Fund	Identified community priority.

## Rural Hinterland – Development related infrastructure requirements

Infrastructure Requirement	Level of Priority	Delivery Partner(s)	Timing of Delivery	Potential Cost / Funds Secured	Potential Funding		Notes
					Wider Sources	Developer Contributions	
<b>BADGER PARISH</b>							
<b>HOUSING AND COHESIVE, SUSTAINABLE COMMUNITIES</b>							
<b>ECONOMIC INVESTMENT AND OPPORTUNITY</b>							
Facilitation of ICT/broadband technologies	PRIORITY	Shropshire Council, Private sector delivery partner, Town and Parish Councils		Initially £16.4 million. £8.2million secured from BDUK. £8.2 million secured from Shropshire Council.		CIL (Local)	The Connecting Shropshire aims to provide a minimum of 2 Mbps to all of Shropshire and as much superfast broadband as possible. The project will deliver to those communities that are not going to get either basic broadband or superfast broadband under the private sector rollout. This is a community priority for many towns, villages and rural areas of Shropshire. Council wishes to express concern that due to poor reception, the facilitation of broadband technology is becoming an acute community priority.
<b>SOCIAL AND COMMUNITY INFRASTRUCTURE</b>							
On-site open space provision and maintenance to meet site design requirements and standards.	PRIORITY	Developers, Shropshire Council	Dependent on development	N/A		On-site design, Section 106	On-site design standards are identified within the Open Space Interim Planning Guidance (IPG) (Jan 2012) and the Natural Environment Supplementary Planning Document (SPD) (to be completed).
Provision and maintenance of facilities and equipment for sport, recreation and leisure. This includes but is not limited to: <ul style="list-style-type: none"> <li>Outdoor sports facilities.</li> <li>Recreational</li> </ul>	PRIORITY	Shropshire Council, Town and Parish Councils	Dependent on development	N/A	Sport England, Fields in Trust	Neighbourhood Fund, CIL (Local)	Provision to meet assessed need.

Infrastructure Requirement	Level of Priority	Delivery Partner(s)	Timing of Delivery	Potential Cost / Funds Secured	Potential Funding		Notes
					Wider Sources	Developer Contributions	
facilities for children. • Allotments.							
<b>ENVIRONMENT AND CLIMATE CHANGE</b>							
<b>TRANSPORT AND ACCESSIBILITY</b>							

Infrastructure Requirement	Level of Priority	Delivery Partner(s)	Timing of Delivery	Potential Cost / Funds Secured	Potential Funding		Notes
					Wider Sources	Developer Contributions	
<b>BECKBURY PARISH</b>							
<b>HOUSING AND COHESIVE, SUSTAINABLE COMMUNITIES</b>							
<b>ECONOMIC INVESTMENT AND OPPORTUNITY</b>							
Facilitation of ICT/broadband technologies	KEY	Shropshire Council, Private sector delivery partner, Town and Parish Councils		Initially £16.4 million. £8.2million secured from BDUK. £8.2 million secured from Shropshire Council.		CIL (Local)	The Connecting Shropshire aims to provide a minimum of 2 Mbps to all of Shropshire and as much superfast broadband as possible. The project will deliver to those communities that are not going to get either basic broadband or superfast broadband under the private sector rollout. This is a community priority for many towns, villages and rural areas of Shropshire.
<b>SOCIAL AND COMMUNITY INFRASTRUCTURE</b>							
On-site open space provision and maintenance to meet site design requirements and standards.	PRIORITY	Developers, Shropshire Council	Dependent on development	N/A		On-site design, Section 106	On-site design standards are identified within the Open Space Interim Planning Guidance (IPG) (Jan 2012) and the Natural Environment Supplementary Planning Document (SPD) (to be completed).
Provision and maintenance of facilities and equipment for sport,	PRIORITY	Shropshire Council, Town and Parish Councils	Dependent on development	N/A	Sport England, Fields in Trust	Neighbourhood Fund, CIL (Local)	Provision to meet assessed need.

Infrastructure Requirement	Level of Priority	Delivery Partner(s)	Timing of Delivery	Potential Cost / Funds Secured	Potential Funding		Notes
					Wider Sources	Developer Contributions	
recreation and leisure. This includes but is not limited to: <ul style="list-style-type: none"> <li>Outdoor sports facilities.</li> <li>Recreational facilities for children.</li> <li>Allotments.</li> </ul>							
<b>ENVIRONMENT AND CLIMATE CHANGE</b>							
Surface water drainage	KEY	Developers, Shropshire Council				On-site design	The Parish Council has identified a potential issue of maintaining adequate surface water drainage in the Parish.
Mains Gas Supply	KEY	Local gas provider					The Parish Council has identified a potential issue around the lack of access to mains gas in the Parish.
<b>TRANSPORT AND ACCESSIBILITY</b>							
Improved road access to village	KEY	Shropshire Council, Developers				Neighbourhood Fund, CIL (Local)	The Parish Council has identified a need to improve road access to the village. Further assessment work required.
Car parking facilities	KEY	Shropshire Council, Beckbury Parish Council, Developers				Neighbourhood Fund, CIL (Local)	The Parish Council has identified inadequate parking as an issue.

Infrastructure Requirement	Level of Priority	Delivery Partner(s)	Timing of Delivery	Potential Cost / Funds Secured	Potential Funding		Notes
					Wider Sources	Developer Contributions	
<b>BOSCOBEL PARISH</b>							
<b>HOUSING AND COHESIVE, SUSTAINABLE COMMUNITIES</b>							
<b>ECONOMIC INVESTMENT AND OPPORTUNITY</b>							
Facilitation of ICT/broadband	KEY	Shropshire		Initially £16.4		CIL (Local)	The Connecting Shropshire aims to provide a minimum of 2 Mbps to all of Shropshire and

Infrastructure Requirement	Level of Priority	Delivery Partner(s)	Timing of Delivery	Potential Cost / Funds Secured	Potential Funding		Notes
					Wider Sources	Developer Contributions	
technologies		Council, Private sector delivery partner, Town and Parish Councils		million. £8.2million secured from BDUK. £8.2 million secured from Shropshire Council.			as much superfast broadband as possible. The project will deliver to those communities that are not going to get either basic broadband or superfast broadband under the private sector rollout. This is a community priority for many towns, villages and rural areas of Shropshire.
<b>SOCIAL AND COMMUNITY INFRASTRUCTURE</b>							
On-site open space provision and maintenance to meet site design requirements and standards.	PRIORITY	Developers, Shropshire Council	Dependent on development	N/A		On-site design, Section 106	On-site design standards are identified within the Open Space Interim Planning Guidance (IPG) (Jan 2012) and the Natural Environment Supplementary Planning Document (SPD) (to be completed).
Provision and maintenance of facilities and equipment for sport, recreation and leisure. This includes but is not limited to: <ul style="list-style-type: none"> <li>• Outdoor sports facilities.</li> <li>• Recreational facilities for children.</li> <li>• Allotments.</li> </ul>	PRIORITY	Shropshire Council, Town and Parish Councils	Dependent on development	N/A	Sport England, Fields in Trust	Neighbourhood Fund, CIL (Local)	Provision to meet assessed need.
<b>ENVIRONMENT AND CLIMATE CHANGE</b>							
<b>TRANSPORT AND ACCESSIBILITY</b>							

Infrastructure Requirement	Level of Priority	Delivery Partner(s)	Timing of Delivery	Potential Cost / Funds Secured	Potential Funding		Notes
					Wider Sources	Developer Contributions	
<b>DONINGTON PARISH</b>							
<b>HOUSING AND COHESIVE, SUSTAINABLE COMMUNITIES</b>							
<b>ECONOMIC INVESTMENT AND OPPORTUNITY</b>							
Facilitation of ICT/broadband technologies	KEY	Shropshire Council, Private sector delivery partner, Town and Parish Councils		Initially £16.4 million. £8.2million secured from BDUK. £8.2 million secured from Shropshire Council.		CIL (Local)	The Connecting Shropshire aims to provide a minimum of 2 Mbps to all of Shropshire and as much superfast broadband as possible. The project will deliver to those communities that are not going to get either basic broadband or superfast broadband under the private sector rollout. This is a community priority for many towns, villages and rural areas of Shropshire.
<b>SOCIAL AND COMMUNITY INFRASTRUCTURE</b>							
On-site open space provision and maintenance to meet site design requirements and standards.	PRIORITY	Developers, Shropshire Council	Dependent on development	N/A		On-site design, Section 106	On-site design standards are identified within the Open Space Interim Planning Guidance (IPG) (Jan 2012) and the Natural Environment Supplementary Planning Document (SPD) (to be completed).
Provision and maintenance of facilities and equipment for sport, recreation and leisure. This includes but is not limited to: <ul style="list-style-type: none"> <li>• Outdoor sports facilities.</li> <li>• Recreational facilities for children.</li> <li>• Allotments.</li> </ul>	PRIORITY	Shropshire Council, Town and Parish Councils	Dependent on development	N/A	Sport England, Fields in Trust	Neighbourhood Fund, CIL (Local)	Provision to meet assessed need.
<b>ENVIRONMENT AND CLIMATE CHANGE</b>							

Infrastructure Requirement	Level of Priority	Delivery Partner(s)	Timing of Delivery	Potential Cost / Funds Secured	Potential Funding		Notes
					Wider Sources	Developer Contributions	
<b>TRANSPORT AND ACCESSIBILITY</b>							
Infrastructure Requirement	Level of Priority	Delivery Partner(s)	Timing of Delivery	Potential Cost / Funds Secured	Potential Funding		Notes
					Wider Sources	Developer Contributions	
<b>RYTON AND GRINDLE PARISH</b>							
<b>HOUSING AND COHESIVE, SUSTAINABLE COMMUNITIES</b>							
<b>ECONOMIC INVESTMENT AND OPPORTUNITY</b>							
Facilitation of ICT/broadband technologies	KEY	Shropshire Council, Private sector delivery partner, Town and Parish Councils		Initially £16.4 million. £8.2million secured from BDUK. £8.2 million secured from Shropshire Council.		CIL (Local)	The Connecting Shropshire aims to provide a minimum of 2 Mbps to all of Shropshire and as much superfast broadband as possible. The project will deliver to those communities that are not going to get either basic broadband or superfast broadband under the private sector rollout. This is a community priority for many towns, villages and rural areas of Shropshire.
<b>SOCIAL AND COMMUNITY INFRASTRUCTURE</b>							
On-site open space provision and maintenance to meet site design requirements and standards.	PRIORITY	Developers, Shropshire Council	Dependent on development	N/A		On-site design, Section 106	On-site design standards are identified within the Open Space Interim Planning Guidance (IPG) (Jan 2012) and the Natural Environment Supplementary Planning Document (SPD) (to be completed).
Provision and maintenance of facilities and equipment for sport, recreation and leisure. This includes but is not limited to: • Outdoor sports facilities. • Recreational facilities for children.	PRIORITY	Shropshire Council, Town and Parish Councils	Dependent on development	N/A	Sport England, Fields in Trust	Neighbourhood Fund, CIL (Local)	Provision to meet assessed need.

Infrastructure Requirement	Level of Priority	Delivery Partner(s)	Timing of Delivery	Potential Cost / Funds Secured	Potential Funding		Notes
					Wider Sources	Developer Contributions	
• Allotments.							
<b>ENVIRONMENT AND CLIMATE CHANGE</b>							
<b>TRANSPORT AND ACCESSIBILITY</b>							
Highway improvements	KEY	Shropshire Council Ryton and Grindle Parish Council				CIL (Local)	Identified community priority. To include: <ul style="list-style-type: none"> <li>• Resurfacing where appropriate</li> <li>• Drainage improvements</li> </ul>

Infrastructure Requirement	Level of Priority	Delivery Partner(s)	Timing of Delivery	Potential Cost / Funds Secured	Potential Funding		Notes
					Wider Sources	Developer Contributions	
<b>TONG PARISH</b>							
<b>HOUSING AND COHESIVE, SUSTAINABLE COMMUNITIES</b>							
<b>ECONOMIC INVESTMENT AND OPPORTUNITY</b>							
Facilitation of ICT/broadband technologies	KEY	Shropshire Council, Private sector delivery partner, Town and Parish Councils		Initially £16.4 million. £8.2million secured from BDUK. £8.2 million secured from Shropshire Council.		CIL (Local)	The Connecting Shropshire aims to provide a minimum of 2 Mbps to all of Shropshire and as much superfast broadband as possible. The project will deliver to those communities that are not going to get either basic broadband or superfast broadband under the private sector rollout. This is a community priority for many towns, villages and rural areas of Shropshire.
<b>SOCIAL AND COMMUNITY INFRASTRUCTURE</b>							
On-site open space provision and maintenance to meet site design requirements and standards.	PRIORITY	Developers, Shropshire Council	Dependent on development	N/A		On-site design, Section 106	On-site design standards are identified within the Open Space Interim Planning Guidance (IPG) (Jan 2012) and the Natural Environment Supplementary Planning Document (SPD) (to be completed).
Provision and maintenance of	PRIORITY	Shropshire Council,	Dependent on	N/A	Sport England,	Neighbourhood Fund,	Provision to meet assessed need.

facilities and equipment for sport, recreation and leisure. This includes but is not limited to:		Town and Parish Councils	development		Fields in Trust	CIL (Local)	
<ul style="list-style-type: none"> <li>• Outdoor sports facilities.</li> <li>• Recreational facilities for children.</li> <li>• Allotments.</li> </ul>							
<b>ENVIRONMENT AND CLIMATE CHANGE</b>							
Improved Rubbish and Recycling Facilities	KEY	Tong Parish Council, Shropshire Council					The Parish Council has identified the need for: <ul style="list-style-type: none"> <li>• Weekly collections</li> <li>• Recycling facilities locally</li> <li>• Skips/lorries for the collection of bulky items on a planned basis</li> </ul>
<b>TRANSPORT AND ACCESSIBILITY</b>							
Local highway improvements, traffic management, parking provision and speed and safety enhancements	KEY	Shropshire Council, Tong Parish Council, Albrighton Road Safety Group, West Mercia Police				CIL (Local)	The Parish Council has identified: <ul style="list-style-type: none"> <li>• The need for a 30mph speed limit in Tong and Tong Norton.</li> <li>• A Parish wide traffic policy.</li> </ul>
Parking Improvements	KEY	Shropshire Council, Tong Parish Council, Bradford Estate			Shropshire Council Parish funds Bradford Estate	Neighbourhood Fund, CIL (Local)	The Parish Council has identified the need for suitable parking in Tong and also to discourage people from parking in areas which cause traffic problems.

## 4. WIDER INVESTMENT PRIORITIES IN ALBRIGHTON PLACE PLAN AREA

- 4.1 In addition to the infrastructure considered vital for the achievement of the vision for Albrighton and consequently the Shropshire Development Strategy, there is also a significant range of wider investment priorities that have been identified for Albrighton, which would support the wider sustainability of the communities within the Place Plan area.
- 4.2 The table below sets out these investment priorities which would support the wider sustainability of the communities within the Place Plan area.

### Albrighton Town – Wider investment priorities

Investment Requirement	Level of Priority	Delivery Partner(s)	Timing of Delivery	Potential Cost / Funds Secured	Potential Funding		Notes
					Wider Sources	Developer Contributions	
<b>ALBRIGHTON TOWN AND PARISH</b>							
<b>HOUSING AND COHESIVE, SUSTAINABLE COMMUNITIES</b>							
Housing for vulnerable people	Key	Shropshire Council, Homes and Communities Agency, Registered Providers, Specialist Care Providers, Voluntary Sector, local communities, schools and colleges, West Mercia	Ongoing	Varies from scheme to scheme	Homes and Communities Agency, Shropshire Council capital programme		Includes provision to support sustainable independent living for vulnerable people including: <ul style="list-style-type: none"> <li>• sustainable living at home</li> <li>• access to work</li> <li>• education and training and community inclusion</li> </ul> Integrated preventative service provision with a <i>pathway</i> approach to access and retain accommodation. Target groups include: older people, young people, people with learning disabilities, mental health needs, people at risk of homelessness or domestic violence, gypsies and travellers, offenders, substance misusers etc.

Investment Requirement	Level of Priority	Delivery Partner(s)	Timing of Delivery	Potential Cost / Funds Secured	Potential Funding		Notes
					Wider Sources	Developer Contributions	
		Police					
Improving and adapting existing housing- includes regeneration	KEY	Shropshire Council, Shropshire Towns and Rural Housing Registered Providers, Home owners, Keep Shropshire Warm, Developers, Shropshire Home Improvement Agency, Schools, Sure Start Children's Centres	Ongoing	Scheme dependent*	Private sector funding		Includes: Energy efficiency to reduce carbon emissions and tackle fuel poverty; Upgrading social housing to meet the Decent Homes standard; and Adaptations to meet changing needs, including disabled facilities grants.  Shropshire Council works with the Shropshire branch of the National Landlord's Association to encourage improvements to privately rented housing focusing on issues such as fuel efficiency, tenancy agreements, local housing allowance, invisible ink security marking, condensation problems and legislation. The 'Decent Homes' standard has been reached on all ST&RH managed Council housing stock.  The Disabled Facilities Grant for aids and adaptations is available to a maximum of £30,000 for each application based on means testing following an assessment process.
Aids and adaptations for social housing tenants	KEY	Shropshire Council Shropshire Towns and Rural Housing	Ongoing		Shropshire Council		Shropshire Towns and Rural Housing manage the Council's housing stock and the procedures for aids and adaptations of Council properties. Procedures are in place for applications by tenants for minor and major adaptation requirements.
Bringing empty homes back into use- includes affordable housing provision	KEY	Shropshire Council, Registered Providers, Property Owners, local communities, voluntary sector	2015-2017	Scheme dependent	Empty Homes: New Homes Bonus	Section 106	During the period of 2010-2013 the figures for empty homes returned to use through Shropshire Council involvement across the County were: 2010/11 – 65; Year 2 2011/12 – 94; 2012/13 – 74.  £250,000 funding in 2015/16. A new Empty Homes Strategy covering the period 2014-17 has been adopted covering all of Shropshire. Empty homes action zones have been

Investment Requirement	Level of Priority	Delivery Partner(s)	Timing of Delivery	Potential Cost / Funds Secured	Potential Funding		Notes
					Wider Sources	Developer Contributions	
		agencies, schools and colleges					designated in Market Drayton and Oswestry.
Extra Care Housing	KEY	Shropshire Council, Registered Providers, Care Providers, Voluntary Sector, Local Communities	2012-2015	Scheme dependent	Developer led.		Locations to be determined. To include Market Town and Rural Area provision. Funding proposals being developed. Extra Care Housing provision targeted towards older people, especially frail older people, with planned provision for respite facilities and housing for people with disabilities.
Regeneration of Sheldon Court	PRIORITY	Shropshire Council, Shropshire Housing Group, Sevenside Housing		c£7million (for complete regeneration)	Shropshire Council		Conversion of existing one bedroom accommodation at Sheldon Court to two bedroom accommodation is supported by Albrighton Parish Council.
Council tenants and community involvement	KEY	Shropshire Council, Citizens Advice Bureau	Ongoing	c£9,000	Shropshire Council		The Council's remaining housing stock is managed by Shropshire Towns and Rural Housing who have a Working in Neighbourhoods Strategy. ST&RH have two Areas Panels for tenant involvement in decision making (they cover Oswestry and Bridgnorth areas).
<b>ECONOMIC INVESTMENT AND OPPORTUNITY</b>							
New Employment Opportunities	KEY	Shropshire Council, Albrighton Parish Council, MoD			Developer led		There is a need for more employment opportunities, including opportunities for returning servicemen and women. The Parish Council identifies: <ul style="list-style-type: none"> <li>• The area of light industry on Cross Road is capable of expanding and would contribute to a sustainable balance of employment</li> <li>• The Cosford base has potential to be incorporated in the High Technology Corridor which Albrighton lies within.</li> </ul>

Investment Requirement	Level of Priority	Delivery Partner(s)	Timing of Delivery	Potential Cost / Funds Secured	Potential Funding		Notes
					Wider Sources	Developer Contributions	
							<p>Potential to reuse some of the current specialist buildings on the site for engineering/technology based employment and capitalise on close proximity to Wolverhampton University Priorslee campus in Telford.</p> <ul style="list-style-type: none"> <li>• Potential future for the Cosford site will need to be considered should the RAF re-locate.</li> <li>• Expand employment uses at Shifnal service station</li> </ul> <p>Shropshire Council's Extended Schools Team has identified opportunities for employment in the childcare sector. Additional need has been recognised, including in relation to service families. Potential of child minding as small business opportunity.</p> <p>Parts of the Albrighton area are Assisted Areas. Assisted areas are places where the government can offer additional financial support to businesses under EU state aid rules, known as regional aid.</p>
Railway station improvements	KEY						Including bringing the derelict buildings back into use, to create an attractive gateway into the town.
<b>SOCIAL AND COMMUNITY INFRASTRUCTURE</b>							
Review of Children's Centre services	PRIORITY	Shropshire Council	Dependent upon developers' timescales	Dependent upon extent and location of development	Private sector financed	Neighbourhood Fund, CIL (Local)	<p>A children's centre is defined by law as a place or group of places:</p> <ul style="list-style-type: none"> <li>• Managed by, or on behalf of, an English local authority, with a view to securing that early childhood services are made available in an integrated manner through which early childhood services are made available – either by provision of services on site, or by the provision of advice and assistance in gaining access to services elsewhere</li> </ul>

Investment Requirement	Level of Priority	Delivery Partner(s)	Timing of Delivery	Potential Cost / Funds Secured	Potential Funding		Notes
					Wider Sources	Developer Contributions	
							<ul style="list-style-type: none"> <li>• At which (some) activities for young children are provided on site.</li> </ul> <p>Children's Centre services are delivered throughout Shropshire. Residential development creates the following impact on children's centres:</p> <ul style="list-style-type: none"> <li>• A higher volume of parents and carers accessing provision in what tend to be relatively small spaces, resulting in the potential of further investment required to increase space.</li> <li>• Where the children's centre services are delivered in part of an existing school building, increasing demand for school places can result in conversion of this space back into a Primary School.</li> </ul> <p>Facilities must therefore be reviewed and sufficient provision made available to support expected development.</p> <p>Within Albrighton there is a Children's Centre in a refurbished wing of Albrighton Primary School.</p>
Refurbishment of the Village Hall	KEY	Albrighton Village Hall Trust, Albrighton Parish Council		£200,000 Funding Secured: £45,000	Market Towns, Albrighton Village Hall Trust.	Neighbourhood Fund	The Parish Council has identified a need for the refurbishment and redesigning of Albrighton Red House main hall and frontage to allow better flexibility for users
Improved leisure facilities	KEY	Shropshire Council, Albrighton Parish Council, MoD, Albrighton Primary School, Youth Service and other VCS youth organisations	Aspirational		Shropshire Council capital programme	Neighbourhood Fund	The Parish Council identifies the sports facilities on the Cosford base which had public access until the IRA threat some years ago. Access to them would address under provision of sports facilities for civilians. The MoD have advised that the facilities at Cosford are already in use by a number of local clubs. The clubs need to be licensed to pay a fee and for insurance purposes. Therefore, whilst the sports facilities on the site are not fully open to the public on an individual basis, civilians are able to use the facilities if they are affiliated with the local

Investment Requirement	Level of Priority	Delivery Partner(s)	Timing of Delivery	Potential Cost / Funds Secured	Potential Funding		Notes
					Wider Sources	Developer Contributions	
							clubs which utilise them.
Redevelopment of Abney Avenue play area	PRIORITY	Albrighton Parish Council		£60,000 Funding Secured £60,000	Community Open Spaces, Awards for All	Neighbourhood Fund	Redevelopment of the play area to include new equipment and a new fence.
Establishment of a Public Toilet at an appropriate site in the Village Centre	KEY					Neighbourhood Fund	Albrighton Parish Council have identified this as an infrastructure requirement
<b>ENVIRONMENT AND CLIMATE CHANGE</b>							
Improvements to the streetscene	KEY	Albrighton Parish Council, Shropshire Council				Neighbourhood Fund	The Parish Council has identified the need for improvements to the streetscene, particularly in relation to: <ul style="list-style-type: none"> <li>• Excessive weed growth on footways</li> <li>• Unkempt appearance of lamp standards, bollards and other street furniture</li> <li>• Dog fouling</li> </ul> Historic Environment have identified the following: <ul style="list-style-type: none"> <li>• Survey to establish where modern railings should be replaced with more traditional design, plus condition survey of existing historic railings and program of repair where necessary.</li> <li>• Identify opportunities to improve visual amenity of the village centre through landscaping.</li> </ul>
Urban Landscape Character Assessment	KEY	Shropshire Council	Aspirational	c£1,500		Neighbourhood Fund	Assessment of Albrighton.
Survey of important views in and out of Albrighton.	KEY	Shropshire Council	Ongoing			Neighbourhood Fund	Fundamental/ important views in and out of the village to be surveyed. Introduce accessible public areas such as walkways, promenades, seating facilities.
Production of list of Locally Important	KEY	Shropshire Council,	Ongoing			Neighbourhood Fund	Local Listing Initiatives supported by English Heritage. Undertake public consultation

Investment Requirement	Level of Priority	Delivery Partner(s)	Timing of Delivery	Potential Cost / Funds Secured	Potential Funding		Notes
					Wider Sources	Developer Contributions	
Buildings.		Albrighton Parish Council, Civic Society, English Heritage					exercise to create list of 'Buildings of Local Architectural or Historic Interest' (non-statutory list) List would identify local heritage assets that are valued by local community but not statutorily listed that would be afforded some degree of protection in the planning system. Involves survey work, preparation of report to Cabinet, publication of list, promotion of list.
White Ladies	KEY	Shropshire Council, English Heritage	Ongoing				Identified as heritage at risk.
Shropshire Community Archaeological Fund	KEY					Neighbourhood Fund	Opportunity for the development of a fund in support of targeted community-led archaeology projects.
Community Tree Scheme	KEY	Shropshire Council, Developers	Ongoing	c£2640 per ha planted with tree whips, c£260 per new street tree. Funding Secured: £5,000 to be shared throughout the council and provision of 10,000 trees	Shropshire Council Highways, Maelar Forest Nurseries, Whitchurch		Run an extensive Community Tree Scheme to provide opportunities to enhance the natural environment of the area. Costs include planting, stakes, tree guards and watering to establish trees over first 3 years.
Management of the Donington and Albrighton Local Nature Reserve	KEY	Shropshire Council, Telford and Wrekin Council		Funding Secured: £50,000	Community Open Spaces Grant		Management of the Local Nature Reserve as a resource for local communities
<b>TRANSPORT AND ACCESSIBILITY</b>							
Various rights of way improvements to create new circular walks - removal of stiles and replacement of gates	KEY	Shropshire Council	2011-2026	£5,590.00	LTP funding	Neighbourhood Fund	Replacing 13 existing stiles with gates for easier access improvements to the Rights of Way network. Creation and enhancement of routes to create new circular walks and promotion of 'health walks' and support to Albrighton Walking for

Investment Requirement	Level of Priority	Delivery Partner(s)	Timing of Delivery	Potential Cost / Funds Secured	Potential Funding		Notes
					Wider Sources	Developer Contributions	
to ensure easier access for all and to support 'Active Market Town' and sustainable transport initiatives.							Health scheme and Parish Paths Partnership. The Council's Extended Schools Team has identified the need to tie in with 'Healthy Living' work in schools, preschool settings and youth organisations. There is an opportunity for young people and families to participate in planning the design of new routes.
Installation of historic finger posts, waymarkers, milestones, mileposts and street signs.	KEY	Shropshire Council	Ongoing			Neighbourhood Fund	Survey of existing conditions and research into lost features. Repair or reinstate where necessary.
Improvement of car parks	KEY	Shropshire Council	Ongoing			Neighbourhood Fund	Identify opportunities to improve the visual amenity of car parks in the historic village centre. Increase provision of wayfinding signs and landscaping.
Maintenance of village green roads	Key	Albrighton Parish Council, Identified owners	Ongoing			Neighbourhood Fund	The Parish Council has identified the need for improved maintenance of village green roads, subject to clarification on the ownership and attendant legal responsibilities.

## Rural Hinterland – Wider investment priorities

Investment Requirement	Level of Priority	Delivery Partner(s)	Timing of Delivery	Potential Cost/ Funds Secured	Potential Funding		Notes
					Wider Sources	Developer Contributions	

Investment Requirement	Level of Priority	Delivery Partner(s)	Timing of Delivery	Potential Cost/ Funds Secured	Potential Funding		Notes
					Wider Sources	Developer Contributions	
<b>BADGER</b>							
<b>HOUSING AND COHESIVE, SUSTAINABLE COMMUNITIES</b>							
<b>ECONOMIC INVESTMENT AND OPPORTUNITY</b>							
<b>SOCIAL AND COMMUNITY INFRASTRUCTURE</b>							
<b>ENVIRONMENT AND CLIMATE CHANGE</b>							
Community Tree Scheme	KEY	Shropshire Council, Developers	Ongoing	c£2640 per ha planted with tree whips. c£260 per new street tree. Funding Secured: £5,000 to be shared throughout the Council and provision of 10,000 trees.	Shropshire Council Highways, Maelar Forest Nurseries, Whitchurch	Neighbourhood Fund	Run an extensive Community Tree Scheme to provide opportunities to enhance the natural environment of the area. Costs include planting, stakes, tree guards and watering to establish trees over first 3 years.
<b>TRANSPORT AND ACCESSIBILITY</b>							

Infrastructure Requirement	Level of Priority	Delivery Partner(s)	Timing of Delivery	Potential Cost / Funds Secured	Potential Funding		Notes
					Wider Sources	Developer Contributions	

Infrastructure Requirement	Level of Priority	Delivery Partner(s)	Timing of Delivery	Potential Cost / Funds Secured	Potential Funding		Notes
					Wider Sources	Developer Contributions	
<b>BECKBURY</b>							
<b>HOUSING AND COHESIVE, SUSTAINABLE COMMUNITIES</b>							
<b>ECONOMIC INVESTMENT AND OPPORTUNITY</b>							
<b>SOCIAL AND COMMUNITY INFRASTRUCTURE</b>							
<b>ENVIRONMENT AND CLIMATE CHANGE</b>							
Community Tree Scheme	KEY	Shropshire Council, Developers	Ongoing	c£2640 per ha planted with tree whips. c£260 per new street tree. Funding Secured: £5,000 to be shared throughout the Council and provision of 10,000 trees.	Shropshire Council Highways, Maelar Forest Nurseries, Whitchurch	Neighbourhood Fund	Run an extensive Community Tree Scheme to provide opportunities to enhance the natural environment of the area. Costs include planting, stakes, tree guards and watering to establish trees over first 3 years.
<b>TRANSPORT AND ACCESSIBILITY</b>							

Infrastructure Requirement	Level of Priority	Delivery Partner(s)	Timing of Delivery	Potential Cost / Funds Secured	Potential Funding		Notes
					Wider Sources	Developer Contributions	
<b>BOSCOBEL</b>							
<b>HOUSING AND COHESIVE, SUSTAINABLE COMMUNITIES</b>							
<b>ECONOMIC INVESTMENT AND OPPORTUNITY</b>							
<b>SOCIAL AND COMMUNITY INFRASTRUCTURE</b>							
<b>ENVIRONMENT AND CLIMATE CHANGE</b>							
Community Tree Scheme	KEY	Shropshire Council, Developers	Ongoing	c£2640 per ha planted with tree whips. c£260 per new street tree. Funding Secured: £5,000 to be shared throughout the Council and provision of 10,000 trees.	Shropshire Council Highways, Maelar Forest Nurseries, Whitchurch	Neighbourhood Fund	Run an extensive Community Tree Scheme to provide opportunities to enhance the natural environment of the area. Costs include planting, stakes, tree guards and watering to establish trees over first 3 years.
St Leonard's Priory	KEY	Parochial Church Council			HLF		Identified as heritage at risk. Established community interest, near English Heritage property. Vulnerable to vandalism and opportunities for improved maintenance.
<b>TRANSPORT AND ACCESSIBILITY</b>							

Infrastructure Requirement	Level of Priority	Delivery Partner(s)	Timing of Delivery	Potential Cost / Funds Secured	Potential Funding		Notes
					Wider Sources	Developer Contributions	
<b>DONINGTON</b>							
<b>HOUSING AND COHESIVE, SUSTAINABLE COMMUNITIES</b>							
<b>ECONOMIC INVESTMENT AND OPPORTUNITY</b>							
<b>SOCIAL AND COMMUNITY INFRASTRUCTURE</b>							
<b>ENVIRONMENT AND CLIMATE CHANGE</b>							
Community Tree Scheme	KEY	Shropshire Council, Developers	Ongoing	c£2640 per ha planted with tree whips. c£260 per new street tree. Funding Secured: £5,000 to be shared throughout the Council and provision of 10,000 trees.	Shropshire Council Highways, Maelar Forest Nurseries, Whitchurch	Neighbourhood Fund	Run an extensive Community Tree Scheme to provide opportunities to enhance the natural environment of the area. Costs include planting, stakes, tree guards and watering to establish trees over first 3 years.
<b>TRANSPORT AND ACCESSIBILITY</b>							

Infrastructure	Level of	Delivery	Timing of	Potential Cost /	Potential Funding	Notes
----------------	----------	----------	-----------	------------------	-------------------	-------

Requirement	Priority	Partner(s)	Delivery	Funds Secured	Wider Sources	Developer Contributions	
<b>RYTON AND GRINDLE</b>							
<b>HOUSING AND COHESIVE, SUSTAINABLE COMMUNITIES</b>							
<b>ECONOMIC INVESTMENT AND OPPORTUNITY</b>							
<b>SOCIAL AND COMMUNITY INFRASTRUCTURE</b>							
Improvements to St Andrews Church	KEY	St Andrews Church, Ryton and Grindle Parish Council				Neighbourhood Fund	Identified community priority. Supporting Friends of St Andrews Church Ryton and Grindle to undertake essential repairs.
<b>ENVIRONMENT AND CLIMATE CHANGE</b>							
Community Tree Scheme	KEY	Shropshire Council, Developers	Ongoing	c£2640 per ha planted with tree whips. c£260 per new street tree. Funding Secured: £5,000 to be shared throughout the Council and provision of 10,000 trees.	Shropshire Council Highways, Maelar Forest Nurseries, Whitchurch	Neighbourhood Fund	Run an extensive Community Tree Scheme to provide opportunities to enhance the natural environment of the area. Costs include planting, stakes, tree guards and watering to establish trees over first 3 years.
<b>TRANSPORT AND ACCESSIBILITY</b>							

Infrastructure Requirement	Level of Priority	Delivery Partner(s)	Timing of Delivery	Potential Cost / Funds Secured	Potential Funding		Notes
					Wider Sources	Developer Contributions	

Infrastructure Requirement	Level of Priority	Delivery Partner(s)	Timing of Delivery	Potential Cost / Funds Secured	Potential Funding		Notes
					Wider Sources	Developer Contributions	
<b>TONG</b>							
<b>HOUSING AND COHESIVE, SUSTAINABLE COMMUNITIES</b>							
<b>ECONOMIC INVESTMENT AND OPPORTUNITY</b>							
<b>SOCIAL AND COMMUNITY INFRASTRUCTURE</b>							
Church repairs and maintenance	KEY	Tong Parish Council, Tong Parochial Church Council, English Heritage, Lichfield Diocese				Neighbourhood Fund	The Parish Council has identified the need to repair and maintain the Church.
Restart the Neighbourhood Watch scheme	KEY	Tong Parish Council, West Mercia Police, Albrighton Neighbourhood Watch, Rural Watch	To be determined following consultation by West Mercia Police with the Parish Council.				The Parish Council has identified the need to support action to make the Parish safer and restart Neighbourhood Watch schemes. The Albrighton Local Policing Team will work with the Parish Council to action these request.
Improved Parish communication	KEY	Tong Parish Council					The Parish Council has identified the need to establish a Parish website.
<b>ENVIRONMENT AND CLIMATE CHANGE</b>							
Community Tree Scheme	KEY	Shropshire Council, Developers	Ongoing	c£2640 per ha planted with tree whips. c£260 per new street tree. Funding Secured: £5,000 to be shared throughout the Council and	Shropshire Council Highways, Maelar Forest Nurseries, Whitchurch	Neighbourhood Fund	Run an extensive Community Tree Scheme to provide opportunities to enhance the natural environment of the area. Costs include planting, stakes, tree guards and watering to establish trees over first 3 years.

Infrastructure Requirement	Level of Priority	Delivery Partner(s)	Timing of Delivery	Potential Cost / Funds Secured	Potential Funding		Notes
					Wider Sources	Developer Contributions	
				provision of 10,000 trees.			
Scheduled Litter Picks	KEY	Tong Parish Council, Shropshire Council, People Against Litter, Tong Tidy Group					The Parish Council has identified the need for regular litter collections
Castle Hill motte and bailey castle	KEY				Higher Level Stewardship		Identified as heritage at risk. Opportunities for improved interpretation.
<b>TRANSPORT AND ACCESSIBILITY</b>							

# APPENDIX A: COMMUNITY ENGAGEMENT AND CONSULTATION FOR ALBRIGHTON PLACE PLAN AREA

## *Community Led Plans*

### *Albrighton and Donington with Boscobel Parish Plan (2004)*

Donington with Boscobel Parish Council have a joint Parish Plan with Albrighton. Therefore please refer to the identified community needs and priorities listed in the Albrighton' section of the Place Plan (section 2.3).

### *Tong Parish Plan (2009)*

The following have been taken from the Tong Parish Plan as identified community needs and priorities:

- Traffic and reducing the speed of vehicles
- Litter collection and fly-tipping
- Improved community spirit
- Rubbish collection and recycling
- Parking problems
- Retaining rural atmosphere
- Road and pavement repairs
- Church repairs and maintenance
- Security
- Additional housing
- Improved bus service
- Need for a new children's playground
- Maintaining and improving the Millennium Pond
- Improvements to The Bell
- No through road in Tong
- Street lighting
- Employment opportunities
- Broadband
- Gas supply
- Sewage system

### *Badger Parish*

An open meeting regarding the development of a Parish Plan took place in May 2011, further updates will be provided in due course.

### *Boningale Parish*

No Parish Plan currently exists. However, Boningale have contributed towards the Albrighton Neighbourhood Plan 'Light'.

### *Beckbury Parish*

No Parish Plan currently exists. The Parish Council have expressed an interest in developing a Parish Plan.

### *Ryton and Grindle Parish*

The Parish Council adopted its Parish Plan in August 2011, and is being reviewed in 2013. The three key themes identified are:

- Appearance of the Parish
- Community and Road Safety
- Community Identity and Communication

## ***Neighbourhood Plan 'Light'***

A Neighbourhood Plan 'Light' has been prepared for the parishes of Albrighton, Donington with Boscobel and Boningale. The Plan has been prepared by Albrighton Parish Council with support from Shropshire Council through its neighbourhood planning front-runner programme. The Plan has utilised the community-led planning route advocated by Shropshire Council. The Plan has been adopted by Shropshire Council and will be treated as a material planning consideration in assessing proposals. More information on this can be viewed here

[www.shropshire.gov.uk/committee.nsf/0/17529E40C0C2204480257BE900413C4F/\\$file/15%20Albrighton%20Neighbourhood%20Plan%20Light.pdf](http://www.shropshire.gov.uk/committee.nsf/0/17529E40C0C2204480257BE900413C4F/$file/15%20Albrighton%20Neighbourhood%20Plan%20Light.pdf)

The following have been taken from the 2013 Albrighton Neighbourhood Plan 'Light' as identified community needs and priorities:

- Health and Community care
- Leisure facilities, including sports hall and football pitch
- Retail service eg shops and drinking establishments
- Resisting unwanted retail eg hot takeaways
- Appropriate signage in primary shopping area
- Use of traditional materials for sign written titles
- Further parking for public
- More pedestrian crossings along the High Street
- Preserve and extend hedgerows
- Tree planting
- Resist any development which would adversely affect the natural environment of the area.
- Developments to be in-keeping with the current pattern of the village
- Variety of housing styles
- New streets to not follow any straight or grid-iron patterns
- Open spaces to be included in any new developments
- New developments (where possible) to have views out to the countryside
- Pathways and cycle paths to be included with large-scale developments
- Architecture of new buildings to reflect the current architecture
- Additional employment

This plan was finalised in 2013 and plans are underway for a review to be undertaken.

## ***Local Joint Committee***

Albrighton, Boningale, Donington with Boscobel and Tong are located within the Albrighton and Cosford Local Joint Committee Area. The following needs and priorities have been raised by the local community as part of Local Joint Committee meetings:

*Albrighton Area Local Joint Committee:*

- Road safety, speeding and HGVs
- Waste

The LJC is also exploring with Shropshire Council the opportunities/timeframe for a local parking survey for Albrighton, given conflicting local opinions about the need for more/less/the same parking capacity from local residents and shopkeepers.

Beckbury, Badger and Ryton and Grindle are located within the Bridgnorth, Worfield, Alveley and Claverley Local Joint Committee Area. The following needs and priorities have been raised by the local community as part of Local Joint Committee meetings:

*Bridgnorth, Worfield, Alveley and Claverley Local Joint Committee*

- Road safety, speeding and HGVs
- Police and community safety
- Streetscene and litter – Keep Britain Tidy pilot Scheme
- Traffic management for events
- The re-opening of the operating theatre at Bridgnorth Hospital
- Knotweed in the river
- Correct use of Byways and footpaths.

### ***Other Community Consultations***

#### **Local Development Framework Core Strategy – Issues and Options Consultation (January-March 2009)**

*Albrighton Parish Council representations on the Core Strategy*

(Representation reference no CORESTRATEGY004888/00001/002)

- The potential for tourism to play a greater role in the County economy
- The so-called 'technology corridor' should not be allowed to become a Wolverhampton-Telford dumbbell, but be used to attract firms to a wider area to the north and south of the M54, including, Shifnal and Albrighton.

#### **Local Development Framework Core Strategy - Policy Directions Consultation (August-October 2009)**

*Albrighton Parish Council representations on the Core Strategy*

(Representation reference no CORESTRATEGY004888/00002/003)

- Improvements in both, particularly railway links to Birmingham and London, and trunk road improvements to the A5, A49 and A41.
- The recent announcement that Telford A&E etc functions will probably be transferred to Shrewsbury, and that ultimately, there will be only one major hospital for the whole of Shropshire is of great concern.

*Boningale Parish Council representations on the Core Strategy*

(Representation reference no CORESTRATEGY 002328/00001/010)

- Affordable housing should be encouraged in smaller communities and villages, but will require market-led housing
- Specific reference should be made to Cosford and the provision of land enabling the training centre to expand.

*Donington with Boscobel Parish Council representations on the Core Strategy*

(Representation reference no CORESTRATEGY 002362/00001/003)

- Providing more affordable homes and local job opportunities as a key priority.
- Improvements to direct rail services, and major trunk road routes in the county, such as the A41, A5 and A49.

*Tong Parish Council representations on the Core Strategy*

(Representation reference no CORESTRATEGY 002448/00001/001)

- Small scale development in small villages.

#### **Local Development Framework Core Strategy- Final Plan Publication (February- March 2010)**

*Albrighton Parish Council representations on the Core Strategy*

(Representation reference no:

CORESTRATEGY/09RSUB/002306/00004/008)

- Albrighton is experiencing a problem of empty shops.
- Police office is too small and in a location that is virtually invisible to local residents.
- Railway stations at Albrighton and Cosford are badly in need of improvement and in particular, provision of sufficient parking facilities. London Midland and Network Rail intend to carry out some improvement works but some contribution from Shropshire Council would be welcome.
- Reference to affordable housing is needed.
- A site is needed for a surgery, even if in the Green Belt.
- There is a serious shortage of sports and leisure facilities in the area which are well below what could reasonably be expected for a settlement of Albrighton's size.
- More good quality local overnight visitor accommodation.
- Housing development to meet the accommodation needs of service personnel.
- Lack of car parking facilities.
- Limited sewage plant capacity.
- Limitations on the capacity of local schools.
- Suitable employment opportunities within the boundary of the existing Cosford site.

**Local Development Framework Site Allocations and Management of Development DPD (SAMDev) – Issues and Options Consultation (April-June 2010)**

*Albrighton Parish Council representations on the SAMDev*

(Representation reference no SAMDEV DPD/04IOP/004888/00004)

- Retention of the village status and feel.
- Increase car parking provision close to the centre of Albrighton.
- A revitalised health centre near the village centre.
- Improvements to the railway station.
- Public open space.
- Indoor sports facilities.
- Substantial additional housing may require extension to one of the two primary schools.
- Minor sewage work extensions may be required.
- Affordable housing.
- Sheltered housing for the elderly.
- Open space.
- Indoor sports facilities.
- Increased local employment opportunities.
- Support for tourism including increased hotel accommodation.

*Beckbury Parish Council representations on the SAMDev*

(Representation reference no SAMDEV DPD/04IOP/002319/00001)

- Improvements to roads including the lanes surrounding Beckbury, which are badly maintained
- Improved parking provision
- Surface drainage of flood water

*Badger Parish Council representations on the SAMDev*

(Representation reference no SAMDEV DPD/04IOP/002315/00001)

- Current drainage system and road infrastructure does not lend itself to new housing or employment expansion
- Preservation of the existing environment

*Donington with Boscobel Parish Council representations on the SAMDev*  
(Representation reference no SAMDEV DPD/04IOP/002362/00002)

- Local businesses should be supported by measures to encourage tourism and particularly overnight visitors, including an increase in local hotel capacity and improvements to the character of the area including measures to limit the number of hot food takeaways.
- Housing needs up to 2026 should primarily address requirements for future development of Cosford site and difficult to specify numbers until which units will occupy site and when. Depending on the number of personnel.

### **Investing in Shropshire's Future- Local Infrastructure and Investment Workshop with Albrighton Parish Council (20<sup>th</sup> September 2010)**

- The RAF and the Defence College of Aeronautical Engineering (DCAE) may move to St. Athan in South Wales in 2014 subject to the Defence Review. An army brigade from Germany is moving in about 2018. The four year gap is felt to be disastrous as many services would close during the time and may not re-establish when the Army arrives.
- Closure of Cosford would impact on local schools, as would the increase in places when the army arrives. Civilian jobs at Cosford are also affected.
- Shropshire Council must feed the concerns into the Defence Review and explore with the MoD what should occur in the intervening period between when the RAF moves out and prior to when the Army move in.
- There are fifteen business premises currently empty in the village.
- Car parking in the centre of Albrighton is problematic including a lack of short stay parking. Parking pressures will increase with future development. Various sites could alleviate the problem including the Catholic Church car park.
- Cross Road site for a new medical centre, is in the green belt but is close to a concentration of elderly residents.
- There is no dedicated youth club facility or multi-use games facility.
- The cricket club is too far away for children to walk and needs to be located more centrally.

### **Albrighton Community Toolkit Event – 9<sup>th</sup> March 2011**

The following activities, facilities, services and infrastructure were considered to be the most important community assets by the event attendees:

Activities:

- Sports activities
- Youth groups and clubs
- Walking and rambling activities

Facilities:

- Parking
- Youth shelter or pod
- Community centre/village hall

Services:

- Shops
- Banking
- Police/emergency services

Infrastructure:

- Regular public transport
- Job opportunities
- Housing opportunities
- Walking and cycling networks

The following points were raised by members of the community as ideas for projects to revitalise the town:

*New and existing facilities:*

- Sports centre/swimming pool
- Make the Red House the real centre of the village
- Village Hall Improvement

Full information and feedback from the Albrighton Toolkit event is available at:  
<http://www.shropshire.gov.uk/factsfigures.nsf/open/C6BE79E370240015802577760045C7C5>



## APPENDIX B: ALBRIGHTON PROFILE

### ***Social and Demographic***

*Source: 2011 Census, Office for National Statistics, © Crown Copyright 2015.*

- In 2011, there were 7,764 residents in the Albrighton Place Plan Area, a decrease of -11.8% since 2001. Over the same period the population of Shropshire Unitary Authority increased by 8.1%.
- Albrighton Place Plan Area had a larger working age (18 to 64) population (60.3%) than the Shropshire average (59.3%). The Place Plan Area also had a slightly larger retirement age population (65 and over) of 21.0%, compared to 20.7% in Shropshire.
- In the Place Plan Area in 2011, there were 2,209 families. 22 families (1.0%) were concealed families, a slightly lower proportion than in Shropshire (1.3%).
- 97.8% of residents (7,347 residents) aged 3 and over spoke English as their main language, a slightly lower proportion than the Shropshire average (97.9%). The most spoken languages apart from English included Arabic (71), Polish (13) and Lithuanian (12). Over two-fifths (46.1%) of Shropshire residents (aged 3+) who spoke Arabic as their main language lived in Albrighton Place Plan Area. Of the 165 residents (aged 3+) who said that English was not their main language, 13 people could not speak English well and 2 people could not speak English at all.
- The 2011 Census showed that the Place Plan Area had a Black and Minority Ethnic Group (BME) population of 219 (2.8%), a larger proportion of residents than in Shropshire (2.0%). The largest broad BME group was Asian/Asian British (77 people, or 1.0%). The largest individual BME group was Arab (65 people, or 0.8%).
- There were 5 communal establishments in the Place Plan Area. 704 people lived in the communal establishments, of which 683 were residents. More than three-fifths of people living in communal establishments were aged between 20 to 24 (436 people or 61.9%).

### ***The Economy***

*Source: 2011 Census, Office for National Statistics, © Crown Copyright 2015.*

- 4,303 people (or 66.5% of the 16+ population) in the Place Plan Area were economically active, compared to 63.5% in Shropshire.

- Just over a quarter of all usual residents aged 16+ (25.2%) were retired, compared with 25.4% in Shropshire. A smaller proportion in the Place Plan Area were unemployed but available to work compared to Shropshire (2.3% and 3.3% respectively).
- Just over a tenth of all usual residents (10.6%) provided some form of unpaid care, compared with 11.2% in Shropshire. In total 180 residents in the Place Plan Area (2.3%) provided 50 or more hours of unpaid care a week, including 1 young person (0-15 years old) and 80 people of retirement age (65+).
- A larger proportion of residents aged 16+ had Level 4 and above qualifications, e.g. a degree, higher degree or higher level NVQ, compared to the Shropshire average (28.6% and 27.5% respectively). A smaller proportion of residents aged 16+ had no qualifications (18.6%) compared to Shropshire (22.5%).
- Over half (52.2%) of the population aged 16+ and in employment the week before the 2011 Census worked in standard occupation classifications 1-3 (managers, directors and senior officials, professional, associate professional and technical), a significantly higher proportion than in Shropshire (38.8%).
- More than two-fifths of people (16+) in employment the week before the Census travelled 10km or more to work (41.2%), compared with 35.1% in Shropshire.

## **Households and Housing**

*Source: 2011 Census, Office for National Statistics, © Crown Copyright 2015.*

- In 2011, there were 3,134 dwellings, including 2,990 household spaces with at least one usual resident. 145 household spaces had no usual residents. At 4.6%, this was slightly higher than the Shropshire average (4.4%).
- There were a larger proportion of semi-detached households (41.4%) than detached households (35.7%) in Albrighton Place Plan Area. In Shropshire, this was reversed, with 33.4% semi-detached households compared to 39.5% detached households.
- The average household size in the Place Plan Area was 2.4 people per household, a slightly higher average than in Shropshire (2.3). The average number of bedrooms per household (3.0) was also higher than the Shropshire average (2.9).
- Albrighton Place Plan Area had a larger proportion of older, childless households than the Shropshire average. 18.8% of households had either one working age adult (aged 16-64) and one adult aged 65+ with no children or two adults aged 65+ with no children compared to 16.7% in Shropshire. Furthermore, one person households (65+) accounted for 15.7% of all households, compared to 13.9% in Shropshire.
- Looking at the age of Household Reference Persons in Albrighton Place Plan Area (a person selected to represent a whole household in statistics), there were slightly more HRPs aged 35 to 54 (36.4% compared to 36.8% in Shropshire) than there were HRPs aged 65 and over (36.1% compared to 31.6% in Shropshire).

## **Transport and Infrastructure**

*Source unless stated: 2011 Census, Office for National Statistics, © Crown Copyright 2015.*

- A lower proportion of households (13.5%) were without a car or a van compared with the Shropshire average (15.8%). Households were more likely to have multiple forms of personal transport: 43.8% of households owned 2 or more cars or vans, compared with 42.0% in Shropshire.
- A smaller proportion of the working age population (16-74) travelled to work either as drivers or passengers in a car or van (43.0%), compared to 47.5% in Shropshire.
- However, residents were more likely to travel to their work on foot (15.1% compared to 8.9% in Shropshire), by bicycle (5.3% compared to 2.0% in Shropshire) or by train (2.1% compared to 0.8% in Shropshire).
- Between 2012-13, there were 87,842 entries and exits to Albrighton Railway Station (Source: Estimates of Station Usage 2012-13, collated by Steer Davies Gleave on behalf of the Office of Rail Regulation, © Copyright 2014).

- Between 2012-13, there were 66,556 entries and exits to Cosford Railway Station (Source: Estimates of Station Usage 2012-13, collated by Steer Davies Gleave on behalf of the Office of Rail Regulation, © Copyright 2014).

### ***Natural and historic environment***

- There are several conservation areas in the Place Plan area, including Albrighton, Albrighton (Station Road) and Albrighton and Donington.
- There are also a number of Listed Buildings, including Churchyard Cross south of the South Porch of the Church of St Mary Magdalene, Church of St Mary Magdalene and Shrewsbury Arms – High Street, as well as Scheduled Monuments, including Churchyard Cross, St Mary Magdalene’s Church.
- The Albrighton Walk, a short-distance walking route, passes through the area (<http://www.shropshirewalking.co.uk/>).
- Several cycle routes pass through Albrighton (<http://www.travelshropshire.co.uk/cycle/cycle-routes/market-town-cycle-rides.aspx>).
- The Donington and Albrighton Local Nature Reserve covers approximately 5.4 hectares. The Nature Reserve is also the only sizeable area of public open space which is available for members of the local communities to use. Most of the Reserve is accessible on well laid out footpaths, with wheelchair access also available. (<http://www.dalnr.org/>)

### ***Further information about Albrighton available online:***

- Shropshire Council Facts and Figures: [www.shropshire.gov.uk/facts-and-figures/](http://www.shropshire.gov.uk/facts-and-figures/)
- UK National Statistics: [www.ons.gov.uk/ons/index.html](http://www.ons.gov.uk/ons/index.html) or [www.statistics.gov.uk/hub/index.html](http://www.statistics.gov.uk/hub/index.html)
- Nomis Profiles (Labour Market statistics): [www.nomisweb.co.uk/](http://www.nomisweb.co.uk/)