



# **Place Plan for Cleobury Mortimer & surrounding area**

**2015/2016**

# CONTENTS

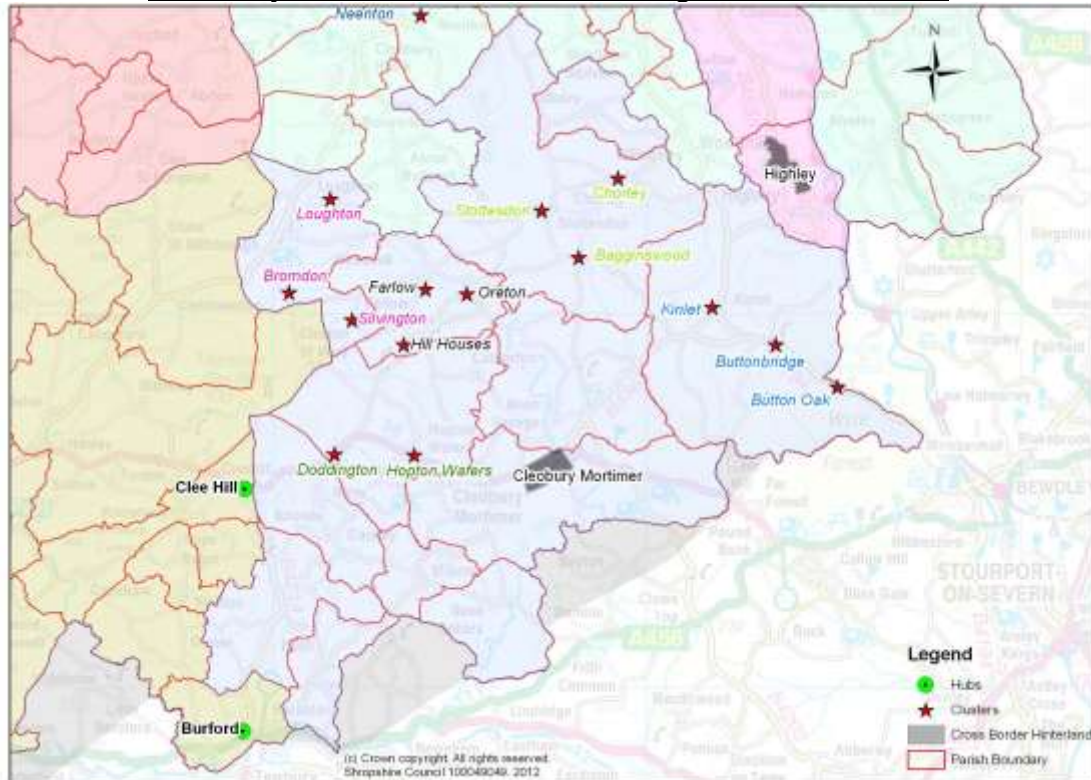
1. INTRODUCTION .....	2
1.1 What is this document? .....	2
1.2 What are Place Plans? .....	2
1.3 How are the Place Plans used? .....	3
1.4 How are the Place Plans structured?.....	3
1.5 Place Plan links to planning and locality commissioning .....	3
2. COMMUNITY LED PLANNING IN THE CLEOBURY MORTIMER AREA.....	6
2.1 Cleobury Mortimer Place Plan Area.....	6
2.2 Summary of community priorities within Cleobury Mortimer Town .....	6
2.3 Summary of community priorities within the surrounding area.....	8
3. DEVELOPMENT AND ASSOCIATED INFRASTRUCTURE REQUIREMENTS .....	10
3.1 Vision to guide development in the Cleobury Mortimer Place Plan Area .....	11
3.2 Associated Infrastructure Requirements.....	12
Cleobury Mortimer Town – Development related infrastructure requirements.....	14
Community Clusters – Development related infrastructure requirements..	18
Rural Hinterland – Development related infrastructure requirements .....	29
4. WIDER INVESTMENT PRIORITIES IN CLEOBURY MORTIMER PLACE PLAN AREA .....	35
Cleobury Mortimer Town - Wider investment priorities .....	35
Community Clusters – Wider investment priorities .....	41
Rural Hinterland – Wider investment priorities.....	50
APPENDIX A: COMMUNITY ENGAGEMENT AND CONSULTATION FOR CLEOBURY MORTIMER PLACE PLAN AREA .....	
Community Led Plans .....	56
Local Joint Committee .....	59
Other Community Consultations.....	59
APPENDIX B: CLEOBURY MARKET TOWN PROFILE .....	63
Social & Demographic Characteristics .....	63
Business.....	63
Housing and Households .....	64
Deprivation .....	<b>Error! Bookmark not defined.</b>
Transport & Infrastructure .....	65
Natural and historic environment.....	65
Information about Cleobury Mortimer available online: .....	65

# 1. INTRODUCTION

## 1.1 What is this document?

- 1.1.1 This document is the *Cleobury Mortimer and surrounding area Place Plan*. It summarises and prioritises the local infrastructure needs which are required to support the sustainable development of the area; and identifies the wider investment needs to assist delivery of the community's vision and aspirations.
- 1.1.2 The area covered within this plan is identified within the Figure below.

Cleobury Mortimer and surrounding area Place Plan



## 1.2 What are Place Plans?

- 1.2.1 The Place Plans are aimed at ensuring the delivery of sustainable places in Shropshire. They recognise that sustainability is based on many different factors and that what is needed to make and maintain a sustainable community in one place may differ in another. As such, the Place Plans list the priorities, needs and aspirations on a place by place basis for each of Shropshire's communities.
- 1.2.2 There are 18 Place Plans in Shropshire. Each Place Plan is based around one of Shropshire's 18 main towns and its wider hinterland, which comprises Community Hubs, Community Clusters and rural parishes within the surrounding countryside (Rural Hinterland).
- 1.2.3 The Place Plans are 'live' documents that are informed by an 'annual conversation' with Town and Parish Councils, infrastructure and service providers. As such, the Place Plans provide an up to date record of infrastructure and investment needs within an area and those priorities which should assist in providing a focus for delivery in the year ahead.

### **1.3 How are the Place Plans used?**

- 1.3.1 The Place Plans provide an important evidence base to:
- **Support delivery of Shropshire's Local Plan-** *ensuring new development is supported by the necessary infrastructure, including identifying requirements for development contributions.*
  - **Assist in informing planning decisions-** *forming a material consideration for planning applications.*
  - **Coordinate actions and inform difficult decisions-** *where future resources should be targeted, by Shropshire Council and partner organisations.*
  - **Inform local partnership working** – *ensuring an agreed set of local priorities.*
  - **Assist with external funding bids-** *providing evidence of local investment needs and priorities*
  - **Provide transparency to local communities-** *identifying where local investment is being targeted.*

### **1.4 How are the Place Plans structured?**

- 1.4.1 Each Place Plan consist of five key sections, these are:

#### **1. Introduction**

The role of Place Plans and the communities covered within the Development Priorities.

#### **2. Community led planning within the Place Plan area**

Summary of the community vision and priorities within the Place Plan area identified through community led plans and wider consultation work with the local community.

#### **3. Development and associated infrastructure requirements**

Summary of the development plan for the area, as identified in Shropshire's Local Plan and the associated infrastructure needs and priorities required to ensure this growth is sustainable, including a plan of how these may be delivered.

#### **4. Wider investment priorities within the Place Plan area**

Summary of the identified investment needs and priorities required to support the wider sustainability of communities within the Place Plan area.

#### **5. Place Plan Profile**

Summary of key data for the Place Plan area, to provide background context to the locality and assist in informing future decision making on infrastructure and investment priorities. This is provided in Appendix B.

### **1.5 Place Plan links to planning and locality commissioning**

#### **Planning**

- 1.5.1 The Place Plans form part of Shropshire's Local Plan, outlining the infrastructure requirements which are needed to support the level and location of development, as outlined in Shropshire's adopted Core Strategy and the Site Allocations and Management of Development (SAMDev) Plan.

- 1.5.2 As Shropshire's Local Plan seeks to link new development to the provision of local community benefits, many of the policies within the Core Strategy and SAMDev Plan refer to the need to consider the local aspirations set out within the Place Plans. As such, the Place Plans are an important material consideration for planning applications.
- 1.5.3 In addition, the Place Plans provide the framework for the targeted use of developer contributions, including design, S106 and CIL. In particular, the infrastructure priorities identified within the Place Plans informs the content of the CIL Regulation 123 List, which sets out those infrastructure needs which will be delivered through the use of CIL.

*Please Note: The CIL Regulation 123 List is updated annually, and infrastructure not included within this list, can still benefit from CIL funds in the future.*

#### **Locality Commissioning**

- 1.5.4 Shropshire Council is committed to locality commissioning whereby there is a strong focus on working with local communities to find out what is important to them and ensuring local services are targeted appropriately. The Place Plans are central to Shropshire's locality commissioning approach, as they provide the local evidence base of investment needs and priorities.

### **1.6 Supporting Shropshire's economic growth and the strategic priorities of the Marches LEP**

- 1.6.1 The Marches Local Enterprise Partnership includes a number of priorities to drive strategic economic growth in Shropshire. The Place Plans help to support delivery of the LEP's economic growth priorities which are:

**Supporting Business** - We will create an exceptional business support environment for aspiring growth businesses through access to finance and incentives to innovate. We will promote the Marches as a business investment location

**Physical Infrastructure** - We will provide a compelling business investment offer with a progressive planning framework and infrastructure fit for tomorrow's business needs. This priority will include supporting the environment.

**Skills Investment** - We will support employers to develop themselves and their workforce and to provide employment opportunities for young people.

**Low Carbon Economy** - We will drive the transition to a high value, low carbon economy, maximising the opportunity in new technologies, reducing environmental costs to business and recognising our environment as an economic asset.

**Social Inclusion** - We will support socially excluded and marginalised groups by removing barriers to their participation in activities that will improve their economic well-being.

1.6.2 The needs at a local level for fostering enterprise, business start-up, business competitiveness and expansion, investor development, inward investment, key account management and high growth business sector development is supported through a package of free business support, a wide range of financial incentives and the provision of economic infrastructure such as business parks, industrial estates and small and medium sized work-shops and incubator office space. Information is available from Shropshire Council's Business and Enterprise Team.

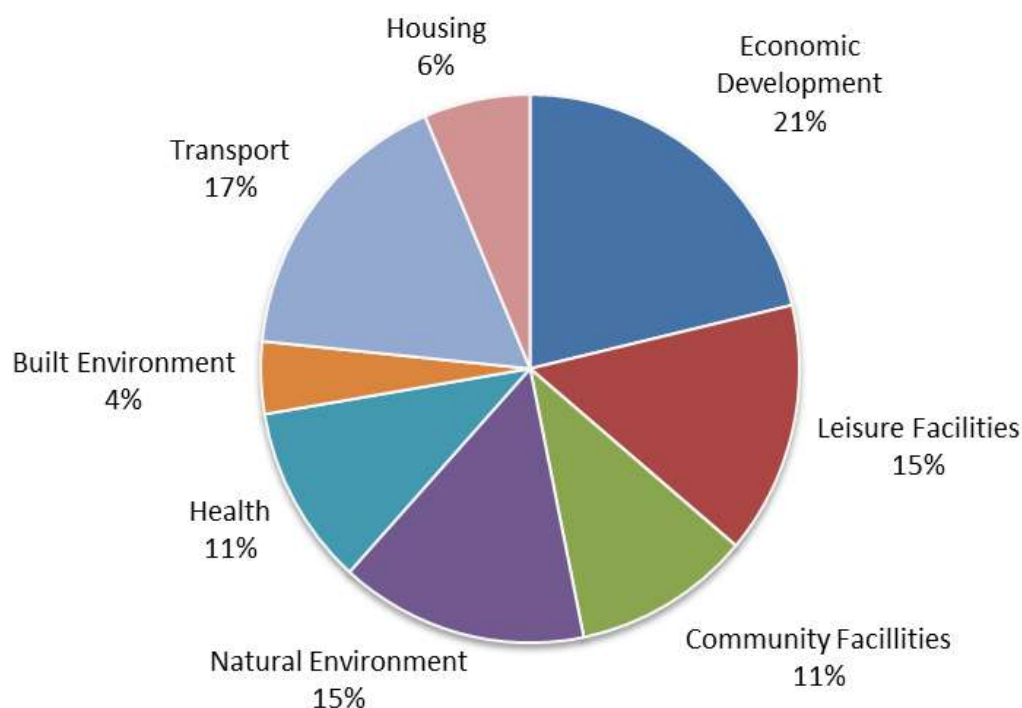
## 2. COMMUNITY LED PLANNING IN THE CLEOBURY MORTIMER AREA

### 2.1 *Cleobury Mortimer Place Plan Area*

- 2.1.1 A number of community led plans have been developed for local communities within the Cleobury Mortimer Place Plan area. These provide a key source of information when considering infrastructure and investment needs within an area and as such are an important basis for the Place Plans.
- 2.1.2 Appendix A provides detailed information on the community's needs and priorities identified through the various community led plans; Local Joint Committees; and other community consultations that have occurred within the Place Plan area.
- 2.1.3 However, to provide a broad understanding of the areas of interest, the below overview summarises those community priorities and key areas of interest set out in detail in Appendix A. This summary has been split between:
- Cleobury Mortimer Town; and
  - Surrounding Area (including Hubs, Clusters and rural parishes).

### 2.2 *Summary of community priorities within Cleobury Mortimer Town*

Summary of community priorities - by type, identified through community consultation in Cleobury Mortimer (as identified in Appendix A).



2.2.1 The above summary can be broken down into the following key headlines:

### **Health and Well-being**

- Increase elderly care facilities in Cleobury.
- Ambulance response times
- Provision of a 58 bed care home
- Continued support of CoCo (Compassionate Communities)
- Support for the Youth Partnership to ensure the views of the young people are heard

### **Transport**

- Implement transport solutions for all members of the community.
- Undertake traffic management plan.
- Regular public transport.

### **Economy and Tourism**

- Develop strategy to attract new businesses to the area.
- Develop a business support network for existing and new businesses.
- IT infrastructure and broadband, particularly to support the local economy.
- Construct a high tech business centre.
- Develop local goods co-operative.
- Develop the tourism potential of the town and its hinterland.
- Manage tourism development and conservation effectively.
- Café/pub/restaurants.
- Shops.
- Job opportunities.
- Increase apprenticeship opportunities

### **Council and Community**

- Undertake a feasibility study on a local crafts centre.
- Improve social and community facilities.
- Develop childcare solutions.
- Continue with a community chest scheme.
- Provide recycling solutions for commercial and agricultural waste.
- Road safety, speeding, traffic-flows and HGVs.
- Housing needs.
- Car parking.
- 20% expansion of the cemetery on Ludlow Road to meet long term need.
- Management of congestion on the A4117, which cuts through Cleobury.
- Education.

### **Environment**

- Increase biodiversity.
- Promote local environmental champions.
- Open spaces and play areas.
- Sewerage capacity and flooding.
- Waste.

### **Community Crime and Safety**

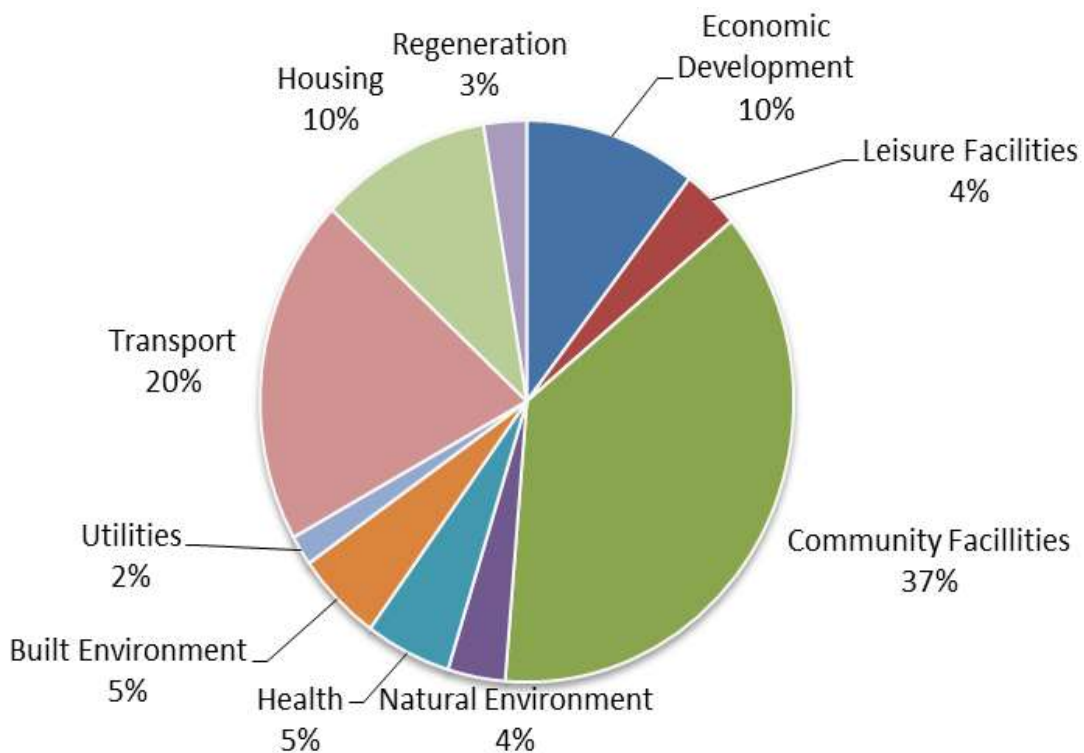
- Operational CCTV
- Crime Reduction Partnership
- Police/emergency services and community safety.

### **Culture, Sports and Leisure**

- Provide facilities, groups/clubs and opportunities for young people.
- Children and family activities.
- Re-open the swimming pool.
- Maintenance of leisure and outdoor spaces, and more provision in line with development – opportunity on Catherton Road.
- Sports Activities.
- Broadband speed and connectivity.

## **2.3 Summary of community priorities within the surrounding area**

Summary of community priorities - by type, identified through community consultation in Cleobury Mortimer surrounding area (as identified in Appendix A).



2.3.1 The above summary can be broken down into the following key headlines:

### **Health and Well-being**

- Improved services, particularly expanded doctors surgery facilities.
- Extra parking at facilities – where required.
- Respond to consultations on hospitals and monitor performance of ambulance service.

## **Economy and Tourism**

- Housing, Affordable Housing and Planning.
- Lack of community facilities, specifically Public Houses and Shops.
- Established lines of communication for local businesses.
- Support shop committee to establish community shop and look at options for Post Office service.
- Work with local employers to support and develop training schemes.
- Promote government funding for farming and rural businesses.
- The local economy, broadband and tourism.
- Agriculture plays an important part in the county.
- Encourage creation of small industrial units on appropriate sites.
- Encourage diversifying existing farm buildings.
- Infrastructure for employment should precede any more housing.

## **Council and Community**

- Survey housing needs.
- Provision of “exception sites” for low-cost housing to meet local needs.
- Encourage and monitor use of existing partly subsidised public transport service.
- Identify and publicise alternative community transport available to meet needs not met by mainstream public transport.
- Improve rural bus services and maintain bus shelters (including timetable displays).
- Police and emergency service provision.
- Interactive speed warning signs.
- Consider potential of a Parish Highway Maintenance Agreement.
- Publicise local waste collection arrangements, ‘bring’ sites/facilities and recycling initiatives.
- Maintain/review public rights of way (footpaths and bridleways).
- Further cross-border initiatives.
- Ensure the local Parish Watch contact network is complete and maintain positive communications with police.
- Local awareness / publicity / advice: ensure up to date and distributed to all.
- Maintain regular parish councillor surgeries.
- Raise awareness, stimulate interest and encourage involvement in elections.
- Organisation of community events.
- Traffic speed on rural roads.
- Concerns over Parish security.
- Support Stottesdon school in delivering its development plan.
- Continue with local ‘Lengthsman’ scheme.
- Promote dangers of speeding vehicles.
- Transport needs of rural communities.
- Public transport Secure by Design needs to be sensitive to the area.
- Improved roads.
- The Village Hall in Chorley has inadequate parking area.
- Retention of the Fighting Cock public house and the adjacent general store in Stottesdon.

## **Environment**

- Increase biodiversity.
- Promote local environmental champions.
- Open spaces and play areas.
- Sewerage capacity and flooding.
- Waste.

## **Culture, Sports and Leisure**

- Support Kinlet Schools EcoSchool / Forest project.
- Continue to identify a range of graded walks to promote sustainable tourism, support the local economy and encourage healthy lifestyles.
- Support the activities of the Four Parishes Heritage Group and Kinlet History Group.
- Support Cleobury youth partnership in assessing and meeting local needs.
- Develop regular community newsletter – where possible using existing publications.
- Maintain and develop the Parish Council website in order to publicise parish activities.
- Develop 'welcome pack' proposal for newcomers to the parish.
- Investigate local interest in producing design statement.
- Identify land and bid for funding to provide sports and play facilities.
- Explore options for youth outreach work.
- Youth opportunities and facilities.
- Superfast broadband.
- The retention of the primary school and its playing fields in Stottesdon, Hopton Wafers is essential.
- Extension of Lacon Childe School before any new development.

### **3.1 Vision to guide development in the Cleobury Mortimer Place Plan Area**

- 3.1.1 Shropshire's Core Strategy (March 2011) sets out the strategic vision and objectives to guide development and growth for the period 2006-2026. This includes a vision for *Cleobury Mortimer (Policy CS3)* and the surrounding *Hubs, Clusters (Policy CS4)* and *Rural Hinterland (Policy CS5)*, as follows:

**CLEOBURY MORTIMER TOWN (Core Strategy Policy CS3)**  
*Cleobury Mortimer will have development that balances environmental constraints with meeting local needs.*

**COMMUNITY HUBS (Core Strategy Policy CS4)**  
*Community Hubs will have development that helps to rebalance rural communities by providing facilities, economic development or housing for local needs that is of a scale appropriate to the settlement.*

**COMMUNITY CLUSTERS (Core Strategy Policy CS4)**  
*Community Clusters are comprised of two or more smaller settlements, where the combined settlements offer a range of services contributing to a sustainable community. Community Clusters will have development that helps to rebalance rural communities by providing facilities, economic development or housing for local needs that is of a scale appropriate to the settlement.*

**RURAL HINTERLAND (CORE STRATEGY POLICY CS5)**  
*New development will be strictly controlled in accordance with national planning policies protecting the countryside and Green Belt. Subject to further controls over development that apply to the Green Belt, development proposals on appropriate sites which maintain and enhance countryside vitality and character will be permitted where they improve the sustainability of rural communities by bringing local economic and community benefits.*

- 3.1.2 Within the Cleobury Mortimer Place Plan area, there are no Community Hubs but a number of Community Clusters:

#### **Community Clusters**

- Kinlet, Button Bridge, and Button Oak
- Hopton Wafers and Doddington
- Oreton, Farlow and Hill Houses
- Silvington, Bromdon, Loughton and Wheathill
- Stottesdon, Chorley and Bagginswood

- 3.1.3 All remaining settlements within the Place Plan area form part of the Rural Hinterland.

- 3.1.4 Detailed proposals to deliver the strategic vision within the Core Strategy are contained within the Site Allocations and Management of Development (SAMDev) document which together with the Core Strategy forms Shropshire's Local Plan for 2006-2026.

3.1.5 The SAMDev Plan sets out the following detailed development policies for the Cleobury Mortimer Place Plan area:

Settlement	Housing guideline	Employment guideline	Allocations
<b>Market Town</b>			
Cleobury Mortimer	350 dwellings	0.7 hectares	<ul style="list-style-type: none"> <li>• Land off Tenbury Road (12 dwellings).</li> <li>• Land at New House Farm (7 dwellings).</li> <li>• Land adjacent to Cleobury Mortimer Industrial Estate, New House Farm (0.7 hectares of employment land).</li> </ul>
<b>Community Clusters</b>			
Kinlet, Button Bridge, Button Oak	30 dwellings	N/A	<ul style="list-style-type: none"> <li>• Land off Little Stocks Close (20 dwellings).</li> </ul>
Hopton Wafers and Doddington	12 dwellings	N/A	N/A
Oreton, Farlow and Hill Houses	12 dwellings	N/A	N/A
Silvington, Bromdon, Loughton and Wheathill	12 dwellings	N/A	N/A
Stottesdon, Chorley and Bagginswood	12 dwellings	N/A	N/A

### 3.2 Associated Infrastructure Requirements

3.2.1 To ensure new development is sustainable, it is important that it is supported by the necessary infrastructure.

3.2.2 The below table details the infrastructure requirements which have been identified as needed to support the level and location of development for the Cleobury Mortimer Place Plan, as set out above. These infrastructure requirements have been identified through:

- Annual Place Plan ‘conversation’ with Town and Parish Councils and Shropshire Council elected Members
- Annual Place Plan ‘conversation’ with local infrastructure and service providers.
- Discussions with stakeholders regarding specific development sites

3.2.3 Whilst it is important that the Place Plan sets out all known infrastructure requirements, it is vital that these are prioritised in order to provide a focus for delivery. Core Strategy Policy CS9 (Infrastructure Contributions) provides the framework for prioritising infrastructure requirements, as follows:

- 1. Critical Infrastructure:** the essentials without which development cannot take place, such as utilities, water management and safe access.
- 2. Priority Infrastructure:** that which has been identified by the community as a particular priority at that point in time.
- 3. Key Infrastructure:** all other infrastructure not included in the previous two categories.

3.2.4 The below table also sets out the recommended mechanism for delivery, taking into account the roles and responsibilities of delivery partners and the regulations governing the use of different funding streams, including developer contributions.

- 3.2.5 However, whilst the Place Plan provide a framework for delivery, enabling the coordination of resources around an agreed set of priorities, it is important to recognise that not all the infrastructure items listed below may be deliverable at a particular point in time.
- 3.2.6 For infrastructure items to be delivered through the use of CIL funding (in full or part), it would usually be identified within the annual CIL Regulation 123 List.

## Cleobury Mortimer Town – Development related infrastructure requirements

Infrastructure Requirement	Level of Priority	Delivery Partner(s)	Timing of Delivery	Potential Cost / Funds Secured	Potential Funding		Notes
					Wider Sources	Developer Contributions	
<b>CLEOBURY MORTIMER TOWN AND PARISH</b>							
<b>HOUSING AND COHESIVE, SUSTAINABLE COMMUNITIES</b>							
Affordable housing provision	PRIORITY	Shropshire Council, Homes and Communities Agency, Registered Providers, Cleobury Mortimer Parish Council	Ongoing	Scheme dependent		Section 106	Within Shropshire, it is the Council's aspiration that all developments contribute to a sustainable mix of dwelling types, sizes and tenures. This will be either through on-site provision or payment of a sum to be used for provision of affordable housing.
<b>ECONOMIC INVESTMENT AND OPPORTUNITY</b>							
Facilitation of ICT/broadband technologies	KEY	Shropshire Council, Private sector delivery partner, Town and Parish Councils Commercial broadband infrastructure providers		Initially £16.4 million. £8.2million secured from BDUK. £8.2 million secured from Shropshire Council.		CIL (Local)	The Connecting Shropshire aims to provide a minimum of 2 Mbps to all of Shropshire and as much superfast broadband as possible. The project will deliver to those communities that are not going to get either basic broadband or superfast broadband under the private sector rollout. This is a community priority for many towns, villages and rural areas of Shropshire.
Tenbury Rd Employment Land and New House Farm development	PRIORITY	Developers, Cleobury Mortimer Parish Council, Shropshire			Developer led/Shropshire council		0.7Ha extension will require infrastructure investment. A recycling centre is seen as a priority for this site as identified in the Parish Plan.

Infrastructure Requirement	Level of Priority	Delivery Partner(s)	Timing of Delivery	Potential Cost / Funds Secured	Potential Funding		Notes
					Wider Sources	Developer Contributions	
		Council					
<b>SOCIAL AND COMMUNITY INFRASTRUCTURE</b>							
Provision of burial land to provide additional capacity	KEY	Shropshire Council, Cleobury Mortimer Parish Council	Ongoing			Neighbourhood Fund, CIL (Local)	The Parish Council has identified the need to expand the burial ground.
Review of primary school places to ensure sufficient provision	PRIORITY	Shropshire Council	N/A	N/A	N/A	N/A	An updated assessment of the effect on primary school places locally has been made based on proposed levels of development with delivery spread evenly over the remaining Plan period. This currently indicates that capacity will exist in the town overall to meet the demand.
Review of secondary school places to ensure sufficient provision	PRIORITY	Shropshire Council	N/A	N/A	N/A	N/A	An updated assessment of the effect on secondary school places locally has been made based on proposed levels of development with delivery spread evenly over the remaining Plan period. This currently indicates that capacity will exist in the town overall to meet the demand.
On-site open space provision and maintenance to meet site design requirements and standards.	PRIORITY	Developers, Shropshire Council	Dependent on development	N/A		On-site design, Section 106	On-site design standards are identified within the Open Space Interim Planning Guidance (IPG) (Jan 2012) and Policy MD2 of the SAMDev Plan (not yet adopted).
Provision and maintenance of facilities and equipment for sport, recreation and leisure. This includes but is not limited to: <ul style="list-style-type: none"> <li>Outdoor sports facilities.</li> <li>Recreational facilities for children.</li> <li>Allotments.</li> </ul>	PRIORITY	Shropshire Council, Town and Parish Councils	Dependent on development	N/A	Sport England, Fields in Trust	Neighbourhood Fund, CIL (Local)	Provision to meet assessed need. The Playing Pitch Strategy has identified that: <ul style="list-style-type: none"> <li>Cleobury Mortimer should have at least 1 playing pitch.</li> <li>Lacon Childe School provides a good quality sports pitch which should be maintained to a high standard and with community use. There is currently a joint use agreement between Lacon Childe School and Teme Leisure for the sports centre and field.</li> <li>There is a need to continue to develop this facility as a site of excellence.</li> </ul>

Infrastructure Requirement	Level of Priority	Delivery Partner(s)	Timing of Delivery	Potential Cost / Funds Secured	Potential Funding		Notes
					Wider Sources	Developer Contributions	
							The Council's Extended Schools Team has identified the need to consider provision for children with a disability and/or additional need. Appropriate allocation of equipment and time for specialist clubs or training of staff to comfortably include children with disabilities. Demand is becoming more apparent as outlets for the parent voice increase e.g. Bridgnorth and the South West Community Working Groups, The 'Empathy' Group and organisations such as Parents and Carers Council and the Parent Partnership. The Parish Council has identified the need to improve the playing area, fields and skate park by primary school.
Improvements of Lacon Childe School playing pitch facilities	PRIORITY	Lacon Childe School, Shropshire Council, Energize (Shropshire, Telford and Wrekin County Sports Partnership), Sport England		Cost: c£50,000 for changing facilities and clubhouse. Funding secured: £65,000 from Sport England	Sport England	Neighbourhood Fund, CIL (Local)	The Playing Pitch Strategy has identified that facilities need some improvements, including the outdoor changing facilities and clubhouse.
Police presence in the town	KEY	West Mercia Police	Ongoing		West Mercia Police		The Police station in Cleobury has closed. It is important that West Mercia Police ensure coverage of the area by officers.
<b>ENVIRONMENT AND CLIMATE CHANGE</b>							
Sewerage network capacity	CRITICAL	Developers, Severn Trent Water	Dependent on development		Developers	N/A	Hydraulic modelling of the wastewater network is required in the south west of the town to assess whether there is capacity within the network to meet development needs. Developers will also need to provide sewers for sites in the north.
Production of Operational Flood Response Plan	PRIORITY	Shropshire Council	Ongoing	£5,000		Section 106	In accordance with the Local Flood Risk Management Strategy the operational flood

Infrastructure Requirement	Level of Priority	Delivery Partner(s)	Timing of Delivery	Potential Cost / Funds Secured	Potential Funding		Notes
					Wider Sources	Developer Contributions	
		Environment Agency Severn Trent Water					response plans, produced from condition surveys of the land drainage systems, will flag who is responsible for the maintenance of the systems which serve communities. The aim is to promote community awareness of these drainage systems such that communities can be more resilient.
<b>TRANSPORT AND ACCESSIBILITY</b>							
Junction capacity, sustainability and safety improvements, where necessary, to facilitate specific development sites	CRITICAL	Shropshire Council				Section 106, CIL (local)	To be determined as part of particular development proposals, as part of the planning application process
Local highway improvements, including speed and safety, public realm enhancements and sustainable travel	PRIORITY	Shropshire Council				CIL (Local)	<p>To include:</p> <ul style="list-style-type: none"> <li>• Provision of a new car park and reduction of on street parking to enhance safety and reduce local congestion on high street</li> <li>• Concerns remain over speeds on entrance/exits to the town.</li> <li>• Continuation of improvements along Lower Street would be very well received.</li> </ul> <p>The Parish Council has identified:</p> <ul style="list-style-type: none"> <li>• Traffic management to help improve the flow of traffic in the town.</li> <li>• The junction between the B4363 and A4117 to the East of Cleobury is an accident blackspot which could be remedied by replacing it with a roundabout. The Parish Council have identified a need for future investment in public transport to other leisure facilities e.g. the swimming pool.</li> </ul> <p>Public transport is an acute problem locally, since services have diminished considerably. Develop and improve the cycle and pedestrian network including improved access routes to school from the west, to include Ludlow road crossing. Initial work has already been undertaken as part of a school</p>

Infrastructure Requirement	Level of Priority	Delivery Partner(s)	Timing of Delivery	Potential Cost / Funds Secured	Potential Funding		Notes
					Wider Sources	Developer Contributions	
							<p>travel plan group to have a safer pedestrian network in the town. Transport provision to support Safe Place to Be at Secondary School;</p> <p>Car and cycle parking facilities for new developments;</p> <p>Cycle and pedestrian facilities – on site, adjacent to or forming strategic links to retail or employment or large residential developments (50+ dwellings);</p> <p>Cycle and pedestrian network development – needs mapping.</p> <p>Bus infrastructure (e.g. stops and shelters, bus gates) where necessary to serve new development;</p> <p>Subsidy for bus service improvements to improve service to development sites –retail or employment or large residential developments (50+ dwellings)</p>

## Community Clusters – Development related infrastructure requirements

Infrastructure Requirement	Level of Priority	Delivery Partner(s)	Timing of Delivery	Potential Cost / Funds Secured	Potential Funding		Notes
					Wider Sources	Developer Contributions	
<b>KINLET, BUTTON BRIDGE AND BUTTON OAK COMMUNITY CLUSTER AND ASSOCIATED PARISHES</b>							
<b>HOUSING AND COHESIVE, SUSTAINABLE COMMUNITIES</b>							
Affordable housing provision	PRIORITY	Shropshire Council, Homes and Communities Agency, Registered Providers, Kinlet Parish Council	Ongoing	Scheme dependent		Section 106	Within Shropshire, it is the Council's aspiration that all developments contribute to a sustainable mix of dwelling types, sizes and tenures. This will be either through on-site provision or payment of a sum to be used for provision of affordable housing.
<b>ECONOMIC INVESTMENT AND OPPORTUNITY</b>							

Infrastructure Requirement	Level of Priority	Delivery Partner(s)	Timing of Delivery	Potential Cost / Funds Secured	Potential Funding		Notes
					Wider Sources	Developer Contributions	
Facilitation of ICT/broadband technologies	KEY	Shropshire Council, Private sector delivery partner, Town and Parish Councils Commercial broadband infrastructure providers		Initially £16.4 million. £8.2million secured from BDUK. £8.2 million secured from Shropshire Council.		CIL (Local)	The Connecting Shropshire aims to provide a minimum of 2 Mbps to all of Shropshire and as much superfast broadband as possible. The project will deliver to those communities that are not going to get either basic broadband or superfast broadband under the private sector rollout. This is a community priority for many towns, villages and rural areas of Shropshire.
<b>SOCIAL AND COMMUNITY INFRASTRUCTURE</b>							
On-site open space provision and maintenance to meet site design requirements and standards.	PRIORITY	Developers, Shropshire Council	Dependent on development	N/A		On-site design, Section 106	On-site design standards are identified within the Open Space Interim Planning Guidance (IPG) (Jan 2012) and the Natural Environment Supplementary Planning Document (SPD) (to be completed).
Provision and maintenance of facilities and equipment for sport, recreation and leisure. This includes but is not limited to: <ul style="list-style-type: none"> <li>Outdoor sports facilities.</li> <li>Recreational facilities for children.</li> <li>Allotments.</li> </ul>	PRIORITY	Shropshire Council, Town and Parish Councils	Dependent on development	N/A	Sport England, Fields in Trust	Neighbourhood Fund, CIL (Local)	Provision to meet assessed need.
Review of primary school places to ensure sufficient provision	PRIORITY	Shropshire Council	N/A	N/A	N/A	N/A	An updated assessment of the effect on primary school places locally has been made based on proposed levels of development with delivery spread evenly over the remaining Plan period. This currently indicates that capacity will exist in the village to meet the demand.
Review of secondary school places to ensure sufficient provision	PRIORITY	Shropshire Council	N/A	N/A	N/A	N/A	An updated assessment of the effect on secondary school places locally has been made based on proposed levels of

Infrastructure Requirement	Level of Priority	Delivery Partner(s)	Timing of Delivery	Potential Cost / Funds Secured	Potential Funding		Notes
					Wider Sources	Developer Contributions	
							development with delivery spread evenly over the remaining Plan period. This currently indicates that capacity will exist in the area to meet the demand.
<b>ENVIRONMENT AND CLIMATE CHANGE</b>							
Private sewer network/package treatment plant at Kinlet	CRITICAL	Developers	Dependent on development	N/A	Developers	N/A	There is no public sewer system in Kinlet. Any development will need to be served by a private sewer network and a package treatment plant. In such cases, the relevant water company will determine the best technical, environmental and economic mechanism to drain foul sewerage from development.
Upgrade local sewerage network	CRITICAL	Severn Trent Water, Parish Council			Severn Trent Water		The Parish Council have identified the need for upgrades to the local sewerage network.
<b>TRANSPORT AND ACCESSIBILITY</b>							
Junction capacity, sustainability and safety improvements, where necessary, to facilitate specific development sites	CRITICAL	Shropshire Council				Section 106	To be determined as part of particular development proposals, as part of the planning application process
Local highway improvements, including speed and safety, public realm enhancements and sustainable travel	PRIORITY	Shropshire Council				CIL (Local)	<p>The Parish Council has identified the need for traffic and road safety improvements, including:</p> <ul style="list-style-type: none"> <li>• A 40mph speed limit on the B4363/B4194 in Kinlet Village</li> <li>• A potential expansion of this on the B4363 at the northerly end to respond to concerns of residents in Winnall area.</li> </ul> <p>Reduced speed limits at:</p> <ul style="list-style-type: none"> <li>• Button Bridge area on the B4194</li> <li>• Severn Lodge Lane</li> <li>• School Lane in Kinlet</li> <li>• B4363 in the Kinlet Bank/ Baveney Wood area (extending into Neen Savage parish)</li> <li>• B4363 Winnall</li> </ul> <p>The Highley and District Local Policing Team will work with Shropshire Council and Kinlet</p>

Infrastructure Requirement	Level of Priority	Delivery Partner(s)	Timing of Delivery	Potential Cost / Funds Secured	Potential Funding		Notes
					Wider Sources	Developer Contributions	
							Parish Council in respect of the above needs.

Infrastructure Requirement	Level of Priority	Delivery Partner(s)	Timing of Delivery	Potential Cost / Funds Secured	Potential Funding		Notes
					Wider Sources	Developer Contributions	

## HOPTON WAFERS AND DODDINGTON COMMUNITY CLUSTER AND ASSOCIATED PARISHES

### HOUSING AND COHESIVE, SUSTAINABLE COMMUNITIES

--	--	--	--	--	--	--	--

### ECONOMIC INVESTMENT AND OPPORTUNITY

Facilitation of ICT/broadband technologies	PRIORITY	Shropshire Council, Private sector delivery partner, Town and Parish Councils Commercial broadband infrastructure providers		Initially £16.4 million. £8.2million secured from BDUK. £8.2 million secured from Shropshire Council.		CIL (Local)	The Connecting Shropshire aims to provide a minimum of 2 Mbps to all of Shropshire and as much superfast broadband as possible. The project will deliver to those communities that are not going to get either basic broadband or superfast broadband under the private sector rollout. This is a community priority for many towns, villages and rural areas of Shropshire. Identified community priority. Hopton Wafers PC identify that the provision is currently very poor.
--	----------	--	--	---	--	-------------	--

### SOCIAL AND COMMUNITY INFRASTRUCTURE

On-site open space provision and maintenance to meet site design requirements and standards.	PRIORITY	Developers, Shropshire Council	Dependent on development	N/A		On-site design, Section 106	On-site design standards are identified within the Open Space Interim Planning Guidance (IPG) (Jan 2012) and the Natural Environment Supplementary Planning Document (SPD) (to be completed).
Provision and maintenance of facilities and equipment for sport, recreation and leisure. This includes but is not limited to: <ul style="list-style-type: none"> <li>Outdoor sports facilities.</li> <li>Recreational facilities</li> </ul>	PRIORITY	Shropshire Council, Town and Parish Councils	Dependent on development	N/A	Sport England, Fields in Trust	Neighbourhood Fund, CIL (Local)	Provision to meet assessed need. The Parish Council identify the potential for facilities to be provided on Hopton Wafers Village Hall field.

Infrastructure Requirement	Level of Priority	Delivery Partner(s)	Timing of Delivery	Potential Cost / Funds Secured	Potential Funding		Notes
					Wider Sources	Developer Contributions	
for children. • Allotments.							
Review of primary school places to ensure sufficient provision	PRIORITY	Shropshire Council	N/A	N/A	N/A	N/A	An updated assessment of the effect on primary school places locally has been made based on proposed levels of development with delivery spread evenly over the remaining Plan period. This currently indicates that capacity will exist in the area to meet the demand.
Review of secondary school places to ensure sufficient provision	PRIORITY	Shropshire Council	N/A	N/A	N/A	N/A	An updated assessment of the effect on secondary school places locally has been made based on proposed levels of development with delivery spread evenly over the remaining Plan period. This currently indicates that capacity will exist in the area to meet the demand.
<b>ENVIRONMENT AND CLIMATE CHANGE</b>							
Installation of mains sewerage at Doddington	PRIORITY	Severn Trent Water	Ongoing		Sever Trent Water		Identified community priority. The Parish Council have initiated discussions with Severn Trent Water with regard to an application for first time sewerage at Doddington/Hopton Bank
<b>TRANSPORT AND ACCESSIBILITY</b>							
Local highway improvements, including speed and safety, public realm enhancements and sustainable travel	PRIORITY	Shropshire Council				CIL (Local)	<p>Hopton Wafers Parish Council has identified:</p> <ul style="list-style-type: none"> <li>• that the camber on the junction of Earls Ditton Lane and the A4117 opposite Doddington Church requires attention.</li> <li>• The turning from Earls Ditton Lane A4117 at Doddington as dangerous, with action intended to assess issues with Shropshire Council Highways, The issue has been assessed and proposals for improvements are being sought.</li> <li>• Water run-off issues on the A4117, which is damaging tracks</li> <li>• Lanes and tracks radiating from Ditton Mills are in a bad state of repair, therefore work with local residents to create a list of works and Lobby Shropshire Council.</li> <li>• Wintry conditions of tracks is very poor,</li> </ul>

Infrastructure Requirement	Level of Priority	Delivery Partner(s)	Timing of Delivery	Potential Cost / Funds Secured	Potential Funding		Notes
					Wider Sources	Developer Contributions	
							<p>with the parish councils trying to identify appropriate schemes.</p> <ul style="list-style-type: none"> <li>• Problems with commercial vehicles speeding, notify police and highways and will be reviewed every 3 months</li> <li>• Inconsistent road signs in Hopton Wafer Village, survey signs and recommend changes in 3 months</li> <li>• Speeding along A4117</li> </ul>
Improvements to Earls Ditton Lane junction	PRIORITY	Shropshire Council				CIL (Local)	Identified community priority. Improvements to the Earls Ditton Lane junction with the A4117 in Doddington. A mirror has been installed but the junction is still viewed as dangerous due to speeding vehicles, despite the 40mph speed limit. Potential for interactive signage to warn of emerging vehicles.
Improvement to bus shelter in Doddington	PRIORITY	Shropshire Council, Parish Council				Neighbourhood Fund, CIL (Local)	Identified community priority. Existing bus shelter does not allow a clear sight of buses.

Infrastructure Requirement	Level of Priority	Delivery Partner(s)	Timing of Delivery	Potential Cost / Funds Secured	Potential Funding		Notes
					Wider Sources	Developer Contributions	
<b>ORETON, FARLOW AND HILL HOUSES COMMUNITY CLUSTER AND ASSOCIATED PARISHES</b>							
<b>HOUSING AND COHESIVE, SUSTAINABLE COMMUNITIES</b>							
<b>ECONOMIC INVESTMENT AND OPPORTUNITY</b>							
Facilitation of ICT/broadband technologies	KEY	Shropshire Council, Private sector delivery partner, Town and		Initially £16.4 million. £8.2million secured from BDUK. £8.2 million		CIL (Local)	The Connecting Shropshire aims to provide a minimum of 2 Mbps to all of Shropshire and as much superfast broadband as possible. The project will deliver to those communities that are not going to get either basic broadband or superfast broadband under the private sector rollout.

Infrastructure Requirement	Level of Priority	Delivery Partner(s)	Timing of Delivery	Potential Cost / Funds Secured	Potential Funding		Notes
					Wider Sources	Developer Contributions	
		Parish Councils Commercial broadband infrastructure providers		secured from Shropshire Council.			This is a community priority for many towns, villages and rural areas of Shropshire.
Electricity	PRIORITY	Western Power Distribution Farlow Parish Council			Provider		The Parish Council has raised concern about ensuring adequate electric supply.
<b>SOCIAL AND COMMUNITY INFRASTRUCTURE</b>							
Expansion of cemeteries	PRIORITY	Shropshire Council				Neighbourhood Fund, CIL (Local)	The Parish Council have identified a need for the expansion of cemeteries to the church/ chapel.
On-site open space provision and maintenance to meet site design requirements and standards.	PRIORITY	Developers, Shropshire Council	Dependent on development	N/A		On-site design, Section 106	On-site design standards are identified within the Open Space Interim Planning Guidance (IPG) (Jan 2012) and the Natural Environment Supplementary Planning Document (SPD) (to be completed).
Provision and maintenance of facilities and equipment for sport, recreation and leisure. This includes but is not limited to: <ul style="list-style-type: none"> <li>Outdoor sports facilities.</li> <li>Recreational facilities for children.</li> <li>Allotments.</li> </ul>	PRIORITY	Shropshire Council, Town and Parish Councils	Dependent on development	N/A	Sport England, Fields in Trust	Neighbourhood Fund, CIL (Local)	Provision to meet assessed need. The Parish Council has identified need for open space provision for sport and leisure.
Review of primary school places to ensure sufficient provision	PRIORITY	Shropshire Council	N/A	N/A	N/A	N/A	An updated assessment of the effect on primary school places locally has been made based on proposed levels of development with delivery spread evenly over the remaining Plan period. This currently indicates that capacity will exist in the village to meet the demand.

Infrastructure Requirement	Level of Priority	Delivery Partner(s)	Timing of Delivery	Potential Cost / Funds Secured	Potential Funding		Notes
					Wider Sources	Developer Contributions	
Review of secondary school places to ensure sufficient provision	PRIORITY	Shropshire Council	N/A	N/A	N/A	N/A	An updated assessment of the effect on secondary school places locally has been made based on proposed levels of development with delivery spread evenly over the remaining Plan period. This currently indicates that capacity will exist in the area to meet the demand.
<b>ENVIRONMENT AND CLIMATE CHANGE</b>							
<b>TRANSPORT AND ACCESSIBILITY</b>							

Infrastructure Requirement	Level of Priority	Delivery Partner(s)	Timing of Delivery	Potential Cost / Funds Secured	Potential Funding		Notes
					Wider Sources	Developer Contributions	
<b>SILVINGTON, BROMDON, LOUGHTON AND WHEATHILL COMMUNITY CLUSTER AND ASSOCIATED PARISHES</b>							
<b>HOUSING AND COHESIVE, SUSTAINABLE COMMUNITIES</b>							
<b>ECONOMIC INVESTMENT AND OPPORTUNITY</b>							
Facilitation of ICT/broadband technologies	KEY	Shropshire Council, Private sector delivery partner, Town and Parish Councils Commercial broadband infrastructure providers		Initially £16.4 million. £8.2million secured from BDUK. £8.2 million secured from Shropshire Council.		CIL (Local)	The Connecting Shropshire aims to provide a minimum of 2 Mbps to all of Shropshire and as much superfast broadband as possible. The project will deliver to those communities that are not going to get either basic broadband or superfast broadband under the private sector rollout. This is a community priority for many towns, villages and rural areas of Shropshire.
<b>SOCIAL AND COMMUNITY INFRASTRUCTURE</b>							
On-site open space provision and	PRIORITY	Developers, Shropshire	Dependent on	N/A		On-site design,	On-site design standards are identified within the Open Space Interim Planning Guidance

Infrastructure Requirement	Level of Priority	Delivery Partner(s)	Timing of Delivery	Potential Cost / Funds Secured	Potential Funding		Notes
					Wider Sources	Developer Contributions	
maintenance to meet site design requirements and standards.		Council	development			Section 106	(IPG) (Jan 2012) and the Natural Environment Supplementary Planning Document (SPD) (to be completed).
Provision and maintenance of facilities and equipment for sport, recreation and leisure. This includes but is not limited to: <ul style="list-style-type: none"> <li>• Outdoor sports facilities.</li> <li>• Recreational facilities for children.</li> <li>• Allotments.</li> </ul>	PRIORITY	Shropshire Council, Town and Parish Councils	Dependent on development	N/A	Sport England, Fields in Trust	Neighbourhood Fund, CIL (Local)	Provision to meet assessed need.
Review of primary school places to ensure sufficient provision	PRIORITY	Shropshire Council	N/A	N/A	N/A	N/A	An updated assessment of the effect on primary school places locally has been made based on proposed levels of development with delivery spread evenly over the remaining Plan period. This currently indicates that capacity will exist in the area to meet the demand.
Review of secondary school places to ensure sufficient provision	PRIORITY	Shropshire Council	N/A	N/A	N/A	N/A	An updated assessment of the effect on secondary school places locally has been made based on proposed levels of development with delivery spread evenly over the remaining Plan period. This currently indicates that capacity will exist in the area to meet the demand.
<b>ENVIRONMENT AND CLIMATE CHANGE</b>							
<b>TRANSPORT AND ACCESSIBILITY</b>							
Provision of a car park	PRIORITY	Shropshire Council, Wheathill Parish Council				Neighbourhood Fund, CIL (Local)	The Parish Council has identified a need for a car park to be positioned at the rear of the war memorial for visitors/commemorative events and for tourists visiting the area.

Infrastructure Requirement	Level of Priority	Delivery Partner(s)	Timing of Delivery	Potential Cost / Funds Secured	Potential Funding		Notes
					Wider Sources	Developer Contributions	
<b>STOTTESDON, CHORLEY AND BAGGINSWOOD COMMUNITY CLUSTER AND ASSOCIATED PARISHES</b>							
<b>HOUSING AND COHESIVE, SUSTAINABLE COMMUNITIES</b>							
<b>ECONOMIC INVESTMENT AND OPPORTUNITY</b>							
Facilitation of ICT/broadband technologies	KEY	Shropshire Council, Private sector delivery partner, Town and Parish Councils Commercial broadband infrastructure providers		Initially £16.4 million. £8.2million secured from BDUK. £8.2 million secured from Shropshire Council.		CIL (Local)	The Connecting Shropshire aims to provide a minimum of 2 Mbps to all of Shropshire and as much superfast broadband as possible. The project will deliver to those communities that are not going to get either basic broadband or superfast broadband under the private sector rollout. This is a community priority for many towns, villages and rural areas of Shropshire.
<b>SOCIAL AND COMMUNITY INFRASTRUCTURE</b>							
On-site open space provision and maintenance to meet site design requirements and standards.	PRIORITY	Developers, Shropshire Council	Dependent on development	N/A		On-site design, Section 106	On-site design standards are identified within the Open Space Interim Planning Guidance (IPG) (Jan 2012) and the Natural Environment Supplementary Planning Document (SPD) (to be completed).
Provision and maintenance of facilities and equipment for sport, recreation and leisure. This includes but is not limited to: <ul style="list-style-type: none"> <li>Outdoor sports facilities.</li> <li>Recreational facilities for children.</li> </ul>	PRIORITY	Shropshire Council, Town and Parish Councils	Dependent on development	N/A	Sport England, Fields in Trust	Neighbourhood Fund, CIL (Local)	Provision to meet assessed need. Provision of an alternative play area in Stottesdon Village is an identified community priority.

Infrastructure Requirement	Level of Priority	Delivery Partner(s)	Timing of Delivery	Potential Cost / Funds Secured	Potential Funding		Notes
					Wider Sources	Developer Contributions	
• Allotments.							
Enhancement of GP surgery - disabled parking	PRIORITY	GPs, CCG, NHS England			Developers, GPs, NHS England	CIL (Local)	Identified community priority. Identified as urgent community priority. Key issue is the need for extra parking for disabled patients attending clinics.
Review of primary school places to ensure sufficient provision	PRIORITY	Shropshire Council	N/A	N/A	N/A	N/A	An updated assessment of the effect on primary school places locally has been made based on proposed levels of development with delivery spread evenly over the remaining Plan period. This currently indicates that capacity will exist in the village to meet the demand.
Review of secondary school places to ensure sufficient provision	PRIORITY	Shropshire Council	N/A	N/A	N/A	N/A	An updated assessment of the effect on secondary school places locally has been made based on proposed levels of development with delivery spread evenly over the remaining Plan period. This currently indicates that capacity will exist in the area to meet the demand.
<b>ENVIRONMENT AND CLIMATE CHANGE</b>							
<b>TRANSPORT AND ACCESSIBILITY</b>							
Footpath enhancement	PRIORITY	Parish Council, Shropshire Council				CIL (Local)	Identified community priority. To support local tourism activity ie walkers, B&Bs, Caravan parks, Rays Farm
Local highway improvements, including speed and safety, public realm enhancements and sustainable travel	PRIORITY	Shropshire Council				CIL (Local)	The Parish Council has identified the need for speed restrictions at dangerous points. And continue to promote dangers of speeding vehicles. The Highley and District Local Policing Team will work with the Parish Council in respect of these matters. The Parish Council aim to monitor the condition of roads and report any maintenance issues to Shropshire Council. 2012/2013 Road maintenance programme provided by Shropshire Council with Stottesdon Road inspection due 2012.

## Rural Hinterland – Development related infrastructure requirements

Infrastructure Requirement	Level of Priority	Delivery Partner(s)	Timing of Delivery	Potential Cost / Funds Secured	Potential Funding		Notes
					Wider Sources	Developer Contributions	
<b>BORASTON PARISH</b>							
<b>HOUSING AND COHESIVE, SUSTAINABLE COMMUNITIES</b>							
<b>ECONOMIC INVESTMENT AND OPPORTUNITY</b>							
Facilitation of ICT/broadband technologies	KEY	Shropshire Council, Private sector delivery partner, Town and Parish Councils Commercial broadband infrastructure providers		Initially £16.4 million. £8.2million secured from BDUK. £8.2 million secured from Shropshire Council.		CIL (Local)	The Connecting Shropshire aims to provide a minimum of 2 Mbps to all of Shropshire and as much superfast broadband as possible. The project will deliver to those communities that are not going to get either basic broadband or superfast broadband under the private sector rollout. This is a community priority for many towns, villages and rural areas of Shropshire.
<b>SOCIAL AND COMMUNITY INFRASTRUCTURE</b>							
On-site open space provision and maintenance to meet site design requirements and standards.	PRIORITY	Developers, Shropshire Council	Dependent on development	N/A		On-site design, Section 106	On-site design standards are identified within the Open Space Interim Planning Guidance (IPG) (Jan 2012) and the Natural Environment Supplementary Planning Document (SPD) (to be completed).
Provision and maintenance of facilities and equipment for sport, recreation and leisure. This includes but is not limited to: <ul style="list-style-type: none"> <li>Outdoor sports facilities.</li> <li>Recreational facilities for children.</li> <li>Allotments.</li> </ul>	PRIORITY	Shropshire Council, Town and Parish Councils	Dependent on development	N/A	Sport England, Fields in Trust	Neighbourhood Fund, CIL (Local)	Provision to meet assessed need.
<b>ENVIRONMENT AND CLIMATE CHANGE</b>							

Infrastructure Requirement	Level of Priority	Delivery Partner(s)	Timing of Delivery	Potential Cost / Funds Secured	Potential Funding		Notes
					Wider Sources	Developer Contributions	
<b>TRANSPORT AND ACCESSIBILITY</b>							

Infrastructure Requirement	Level of Priority	Delivery Partner(s)	Timing of Delivery	Potential Cost / Funds Secured	Potential Funding		Notes
					Wider Sources	Developer Contributions	
<b>CORELEY PARISH</b>							
<b>HOUSING AND COHESIVE, SUSTAINABLE COMMUNITIES</b>							
<b>ECONOMIC INVESTMENT AND OPPORTUNITY</b>							
Facilitation of ICT/broadband technologies	PRIORITY	Shropshire Council, Private sector delivery partner, Town and Parish Councils  Commercial broadband infrastructure providers		Initially £16.4 million. £8.2million secured from BDUK.  £8.2 million secured from Shropshire Council.		CIL (Local)	The Connecting Shropshire aims to provide a minimum of 2 Mbps to all of Shropshire and as much superfast broadband as possible. The project will deliver to those communities that are not going to get either basic broadband or superfast broadband under the private sector rollout. This is a community priority for many towns, villages and rural areas of Shropshire.
<b>SOCIAL AND COMMUNITY INFRASTRUCTURE</b>							
On-site open space provision and maintenance to meet site design requirements and standards.	PRIORITY	Developers, Shropshire Council	Dependent on development	N/A		On-site design, Section 106	On-site design standards are identified within the Open Space Interim Planning Guidance (IPG) (Jan 2012) and the Natural Environment Supplementary Planning Document (SPD) (to be completed).
Provision and maintenance of facilities and equipment for sport, recreation and leisure. This includes but is not limited to: <ul style="list-style-type: none"> <li>Outdoor sports facilities.</li> </ul>	PRIORITY	Shropshire Council, Town and Parish Councils	Dependent on development	N/A	Sport England, Fields in Trust	Neighbourhood Fund, CIL (Local)	Provision to meet assessed need. The Parish Council view this as an urgent priority.

Infrastructure Requirement	Level of Priority	Delivery Partner(s)	Timing of Delivery	Potential Cost / Funds Secured	Potential Funding		Notes
					Wider Sources	Developer Contributions	
<ul style="list-style-type: none"> <li>Recreational facilities for children.</li> <li>Allotments.</li> </ul>							
<b>ENVIRONMENT AND CLIMATE CHANGE</b>							
<b>TRANSPORT AND ACCESSIBILITY</b>							

Infrastructure Requirement	Level of Priority	Delivery Partner(s)	Timing of Delivery	Potential Cost / Funds Secured	Potential Funding		Notes
					Wider Sources	Developer Contributions	
<b>MILSON AND NEEN SOLLARS PARISHES</b>							
<b>HOUSING AND COHESIVE, SUSTAINABLE COMMUNITIES</b>							
<b>ECONOMIC INVESTMENT AND OPPORTUNITY</b>							
Facilitation of ICT/broadband technologies	PRIORITY	Shropshire Council, Private sector delivery partner, Town and Parish Councils Commercial broadband infrastructure providers		Initially £16.4 million. £8.2million secured from BDUK. £8.2 million secured from Shropshire Council.		CIL (Local)	The Connecting Shropshire aims to provide a minimum of 2 Mbps to all of Shropshire and as much superfast broadband as possible. The project will deliver to those communities that are not going to get either basic broadband or superfast broadband under the private sector rollout. This is a community priority for many towns, villages and rural areas of Shropshire.  2 Mbps is considered by Parish Council to be a minimum standard. This is a community priority.
<b>SOCIAL AND COMMUNITY INFRASTRUCTURE</b>							
On-site open space provision and maintenance to meet site design requirements and standards.	PRIORITY	Developers, Shropshire Council	Dependent on development	N/A		On-site design, Section 106	On-site design standards are identified within the Open Space Interim Planning Guidance (IPG) (Jan 2012) and the Natural Environment Supplementary Planning Document (SPD) (to be completed).
Provision and maintenance of facilities	PRIORITY	Shropshire Council,	Dependent on	N/A	Sport England, Fields in Trust	Neighbourhood Fund,	Provision to meet assessed need.

Infrastructure Requirement	Level of Priority	Delivery Partner(s)	Timing of Delivery	Potential Cost / Funds Secured	Potential Funding		Notes
					Wider Sources	Developer Contributions	
and equipment for sport, recreation and leisure. This includes but is not limited to: <ul style="list-style-type: none"> <li>Outdoor sports facilities.</li> <li>Recreational facilities for children.</li> <li>Allotments.</li> </ul>		Town and Parish Councils	development			CIL (Local)	
<b>ENVIRONMENT AND CLIMATE CHANGE</b>							
<b>TRANSPORT AND ACCESSIBILITY</b>							

Infrastructure Requirement	Level of Priority	Delivery Partner(s)	Timing of Delivery	Potential Cost / Funds Secured	Potential Funding		Notes
					Wider Sources	Developer Contributions	
<b>NASH PARISH</b>							
<b>HOUSING AND COHESIVE, SUSTAINABLE COMMUNITIES</b>							
<b>ECONOMIC INVESTMENT AND OPPORTUNITY</b>							
Facilitation of ICT/broadband technologies	KEY	Shropshire Council, Private sector delivery partner, Town and Parish Councils Commercial broadband infrastructure		Initially £16.4 million. £8.2million secured from BDUK. £8.2 million secured from Shropshire Council.		CIL (Local)	The Connecting Shropshire aims to provide a minimum of 2 Mbps to all of Shropshire and as much superfast broadband as possible. The project will deliver to those communities that are not going to get either basic broadband or superfast broadband under the private sector rollout. This is a community priority for many towns, villages and rural areas of Shropshire.

Infrastructure Requirement	Level of Priority	Delivery Partner(s)	Timing of Delivery	Potential Cost / Funds Secured	Potential Funding		Notes
					Wider Sources	Developer Contributions	
		providers					
<b>SOCIAL AND COMMUNITY INFRASTRUCTURE</b>							
On-site open space provision and maintenance to meet site design requirements and standards.	PRIORITY	Developers, Shropshire Council	Dependent on development	N/A		On-site design, Section 106	On-site design standards are identified within the Open Space Interim Planning Guidance (IPG) (Jan 2012) and the Natural Environment Supplementary Planning Document (SPD) (to be completed).
Provision and maintenance of facilities and equipment for sport, recreation and leisure. This includes but is not limited to: <ul style="list-style-type: none"> <li>Outdoor sports facilities.</li> <li>Recreational facilities for children.</li> <li>Allotments.</li> </ul>	PRIORITY	Shropshire Council, Town and Parish Councils	Dependent on development	N/A	Sport England, Fields in Trust	Neighbourhood Fund, CIL (Local)	Provision to meet assessed need.
<b>ENVIRONMENT AND CLIMATE CHANGE</b>							
<b>TRANSPORT AND ACCESSIBILITY</b>							

Infrastructure Requirement	Level of Priority	Delivery Partner(s)	Timing of Delivery	Potential Cost / Funds Secured	Potential Funding		Notes
					Wider Sources	Developer Contributions	
<b>NEEN SAVAGE PARISH</b>							
<b>HOUSING AND COHESIVE, SUSTAINABLE COMMUNITIES</b>							
<b>ECONOMIC INVESTMENT AND OPPORTUNITY</b>							
Facilitation of ICT/broadband technologies	KEY	Shropshire Council, Private sector delivery partner, Town and		Initially £16.4 million. £8.2million secured from BDUK. £8.2 million		CIL (Local)	The Connecting Shropshire aims to provide a minimum of 2 Mbps to all of Shropshire and as much superfast broadband as possible. The project will deliver to those communities that are not going to get either basic broadband or superfast broadband under the

Infrastructure Requirement	Level of Priority	Delivery Partner(s)	Timing of Delivery	Potential Cost / Funds Secured	Potential Funding		Notes
					Wider Sources	Developer Contributions	
		Parish Councils Commercial broadband infrastructure providers		secured from Shropshire Council.			private sector rollout. This is a community priority for many towns, villages and rural areas of Shropshire.
Expand Old Station Business Park	KEY	Developers, Shropshire Council			Developer led.		Extension of 0.5ha. Two units under construction, continued support from private sector.
<b>SOCIAL AND COMMUNITY INFRASTRUCTURE</b>							
On-site open space provision and maintenance to meet site design requirements and standards.	PRIORITY	Developers, Shropshire Council	Dependent on development	N/A		On-site design, Section 106	On-site design standards are identified within the Open Space Interim Planning Guidance (IPG) (Jan 2012) and the Natural Environment Supplementary Planning Document (SPD) (to be completed).
Provision and maintenance of facilities and equipment for sport, recreation and leisure. This includes but is not limited to: <ul style="list-style-type: none"> <li>• Outdoor sports facilities.</li> <li>• Recreational facilities for children.</li> <li>• Allotments.</li> </ul>	PRIORITY - URGENT	Shropshire Council, Town and Parish Councils	Dependent on development	N/A	Sport England, Fields in Trust	Neighbourhood Fund, CIL (Local)	Provision to meet assessed need.
<b>ENVIRONMENT AND CLIMATE CHANGE</b>							
<b>TRANSPORT AND ACCESSIBILITY</b>							

## 4. WIDER INVESTMENT PRIORITIES IN CLEOBURY MORTIMER PLACE PLAN AREA

- 4.1.1 In addition to the infrastructure considered vital for the achievement of the vision for Cleobury Mortimer and consequently the Shropshire Development Strategy, there is also a significant range of wider investment priorities that have been identified for Cleobury Mortimer, which would support the wider sustainability of the communities within the Place Plan area.
- 4.1.2 The table below sets out these investment priorities which would support the wider sustainability of the communities within the Place Plan area.

### Cleobury Mortimer Town - Wider investment priorities

Investment Requirement	Level of Priority	Delivery Partner(s)	Timing of Delivery	Potential Cost / Funds Secured	Potential Funding		Notes
					Wider Sources	Developer Contributions	
<b>CLEOBURY MORTIMER TOWN AND PARISH</b>							
<b>HOUSING AND COHESIVE, SUSTAINABLE COMMUNITIES</b>							
Housing for vulnerable people	Key	Shropshire Council, Homes and Communities Agency, Registered Providers, Specialist Care Providers, Voluntary Sector, local communities, schools and colleges, West Mercia	Ongoing	Varies from scheme to scheme	Homes and Communities Agency, Shropshire Council capital programme		Includes provision to support sustainable independent living for vulnerable people including: <ul style="list-style-type: none"> <li>• sustainable living at home</li> <li>• access to work</li> <li>• education and training and community inclusion</li> </ul> Integrated preventative service provision with a <i>pathway</i> approach to access and retain accommodation. Target groups include: older people, young people, people with learning disabilities, mental health needs, people at risk of homelessness or domestic violence, gypsies and travellers, offenders, substance misusers etc.

Investment Requirement	Level of Priority	Delivery Partner(s)	Timing of Delivery	Potential Cost / Funds Secured	Potential Funding		Notes
					Wider Sources	Developer Contributions	
		Police					
Improving and adapting existing housing- includes regeneration	KEY	Shropshire Council, Shropshire Towns and Rural Housing Registered Providers, Home owners, Keep Shropshire Warm, Developers, Shropshire Home Improvement Agency,	ongoing	Scheme dependent	Private sector funding		<p>Includes:</p> <ul style="list-style-type: none"> <li>• Energy efficiency to reduce carbon emissions and tackle fuel poverty;</li> <li>• Upgrading social housing to meet the Decent Homes standard; and</li> <li>• Adaptations to meet changing needs, including disabled facilities grants.</li> </ul> <p>Shropshire Council works with the Shropshire branch of the National Landlord's Association to encourage improvements to privately rented housing focusing on issues such as fuel efficiency, tenancy agreements, local housing allowance, invisible ink security marking, condensation problems and legislation. At March 2015 the 'Decent Homes' standard has been met on all ST&amp;RH managed Council housing stock. At 31 March 2014 94.34% of stock had acquired the Decent Homes standard following spending of £4.1m 2012/13 and £2.6m in 2013/14.</p> <p>The Disabled Facilities Grant for aids and adaptations is available for any house to a maximum of £30,000 for each application based on means testing following an assessment process.</p>
Aids and adaptations for social housing tenants	KEY	Shropshire Council Shropshire Towns and Rural Housing	Ongoing	Scheme dependent	Shropshire Council		Shropshire Towns and Rural Housing manage the Council's housing stock and the procedures for aids and adaptations of Council properties. Procedures are in place for applications by tenants for minor and major adaptation requirements.
Bringing empty homes back into use- includes affordable housing provision	KEY	Shropshire Council, Registered Providers,	2015-2017	Scheme dependent	Empty Homes: New Homes Bonus	Section 106	During the period of 2010-2013 the figures for empty homes returned to use through Shropshire Council involvement across the County were: 2010/11 – 65; Year 2 2011/12 –

Investment Requirement	Level of Priority	Delivery Partner(s)	Timing of Delivery	Potential Cost / Funds Secured	Potential Funding		Notes
					Wider Sources	Developer Contributions	
		Property Owners, local communities, voluntary sector agencies, schools and colleges					94; 2012/13 – 74.  £250,000 funding in 2015/16. A new Empty Homes Strategy covering the period 2014-17 has been adopted covering all of Shropshire. Empty homes action zones have been designated in Market Drayton and Oswestry.
Extra Care Housing	KEY	Shropshire Council, Registered Providers, Care Providers, Voluntary Sector, Local Communities	2015-2018	Scheme dependent	Developer led.		Locations to be determined. To include Market Town and Rural Area provision. Funding proposals being developed. Extra Care Housing provision targeted towards older people, especially frail older people, with planned provision for respite facilities and housing for people with disabilities.
<b>ECONOMIC INVESTMENT AND OPPORTUNITY</b>							
Development of live/work units	KEY	Cleobury Mortimer Parish Council			Developer led.		The Parish Council see the development of live/work units as a good opportunity to bring employment to Cleobury.
<b>SOCIAL AND COMMUNITY INFRASTRUCTURE</b>							
Review of Children's Centre services	PRIORITY	Shropshire Council	Dependent upon developers' timescales	Dependent upon extent and location of development	Private sector financed	Neighbourhood Fund, CIL (Local)	A children's centre is defined by law as a place or group of places: <ul style="list-style-type: none"> <li>• Managed by, or on behalf of, an English local authority, with a view to securing that early childhood services are made available in an integrated manner through which early childhood services are made available – either by provision of services on site, or by the provision of advice and assistance in gaining access to services elsewhere</li> <li>• At which (some) activities for young children are provided on site.</li> </ul> Children's Centre services are delivered

Investment Requirement	Level of Priority	Delivery Partner(s)	Timing of Delivery	Potential Cost / Funds Secured	Potential Funding		Notes
					Wider Sources	Developer Contributions	
							<p>throughout Shropshire. Residential development creates the following impact on children's centres:</p> <ul style="list-style-type: none"> <li>• A higher volume of parents and carers accessing provision in what tend to be relatively small spaces, resulting in the potential of further investment required to increase space.</li> <li>• Where the children's centre services are delivered in part of an existing school building, increasing demand for school places can result in conversion of this space back into a Primary School.</li> </ul> <p>Facilities must therefore be reviewed and sufficient provision made available to support expected development.</p> <p>Within Cleobury Mortimer Children's Centre services are delivered from community buildings – responding to need.</p>
Shop Front Redecoration Scheme	KEY	Shropshire Council, Cleobury Mortimer Parish Council	Ongoing			Neighbourhood Fund	Deterioration above shop front level in Lower Street, Church Street and High Street. Current and likely further shop closures in the High Street. Manor House is a significant redevelopment opportunity.
Reconfiguring existing facilities at Cleobury Mortimer Sports Centre enabling the conversion of existing unused changing rooms to an extended fitness suite, and subsequently converting existing fitness suite to a dance studio, providing opportunities for increased participation	KEY	Lacon Childe School, Teme Leisure (facility operator), Shropshire Council	to be completed by August 2018	Potential cost circa. £145,000	developer contribution(CIL) /operator/Sport England/town council/Shropshire Council/Public Health	Neighbourhood Fund, CIL (Local)	Demand for increasing the range of facilities at Cleobury Mortimer Sports Centre has been identified and with further developments in the town and surrounding area demand will increase
<b>ENVIRONMENT AND CLIMATE CHANGE</b>							
Urban Landscape Character Assessment	KEY	Shropshire Council	Aspirational	£1,500		Neighbourhood Fund	Undertake an Urban Landscape Character Assessment of Cleobury Mortimer

Investment Requirement	Level of Priority	Delivery Partner(s)	Timing of Delivery	Potential Cost / Funds Secured	Potential Funding		Notes
					Wider Sources	Developer Contributions	
Survey of important views in and out of Cleobury Mortimer.	KEY	Shropshire Council	Ongoing			Neighbourhood Fund	Fundamental/important town views in and out to be surveyed. Introduce accessible public areas such as walkways, promenades, seating facilities.
Production of list of Locally Important Buildings.	KEY	Shropshire Council, Town Council, Civic Society, English Heritage	Ongoing			Neighbourhood Fund	Local Listing Initiatives supported by English Heritage. Undertake public consultation exercise to create list of 'Buildings of Local Architectural or Historic Interest' (non-statutory list) List would identify local heritage assets that are valued by local community but not statutorily listed that would be afforded some degree of protection in the planning system. Involves survey work, preparation of report to Cabinet, publication of list, promotion of list
Heritage at Risk register	KEY	Shropshire Council, English Heritage	Ongoing			Neighbourhood Fund	Engage local groups to identify future Buildings at Risk.
Shropshire Community Archaeological Fund	KEY					Neighbourhood Fund	Opportunity for the development of a fund in support of targeted community-led archaeology projects. The '@Four parishes Industrial Heritage Group' have been working on local issues at Oreton Brick Kiln, Kinlet Pits and mills on the river Rea
Streetscene Improvements	KEY	Shropshire Council, Cleobury Mortimer Parish Council				Neighbourhood Fund	Identify opportunities to reduce street clutter. Provide new bus shelters to improve the streetscene. Completed in the High St Survey to establish where modern railings should be replaced with more traditional design, plus condition survey of existing historic railings and program of repair where necessary. Identify opportunities to improve visual amenity of town centre through landscaping. Survey all streets for existing signage and replace, repair or introduce where necessary - ongoing.
Community Tree Scheme	KEY	Shropshire		C£2640 per	£5000 to be		Run an extensive Community Tree Scheme

Investment Requirement	Level of Priority	Delivery Partner(s)	Timing of Delivery	Potential Cost / Funds Secured	Potential Funding		Notes
					Wider Sources	Developer Contributions	
		Council, Developers, Shropshire Council		ha planted with tree whips. C£260 per new street tree.	shared throughout the council and provision of 10,000 trees.		to provide opportunities to enhance the natural environment of the area. Costs include planting, stakes, tree guards and watering to establish trees over first 3 years.
Environmental improvements to the Wells Area	PRIORITY	Cleobury Mortimer Parish Council				Neighbourhood Fund	This area needs to be tidied up. In hand, but significant repair and renovations are required.
Recycle Centre	PRIORITY	Shropshire Council, Cleobury Mortimer Parish Council				CIL project	This is part of the plans for the MRTP project for employment land at Tenbury Road
<b>TRANSPORT AND ACCESSIBILITY</b>							
Various rights of way improvements	KEY	Shropshire Council, Cleobury Mortimer Footpaths Group	2011-2016	£38,010.00	LTP funding	Neighbourhood Fund	Replacing 99 existing stiles with gates for easier access improvements to the Rights of Way network and providing 61 new directional signposts Removal of stiles and replacement of gates and enhanced directional signage to ensure easier access for all and to support 'Active Market Town' and sustainable transport initiatives Cleobury Mortimer Footpath Association have identified that a project is underway to create two more walks as part of making Cleobury Mortimer Golf Course a hub for walking.
Installation of historic finger posts, waymarkers, milestones, mileposts and street signs.	KEY	Shropshire Council	ongoing			Neighbourhood Fund	Survey of existing conditions and research into lost features. Repair or reinstate where necessary
Road safety Improvements	PRIORITY	Shropshire Council					Improvements to New Bridge Rd, speed restrictions to Castle Toot, pavements on Tenbury Rd and improved footpath at Catherton Junction. Identified community priority.
Improvement of car parks	KEY	Shropshire	ongoing			Neighbourhood	Identify opportunities to improve the visual

Investment Requirement	Level of Priority	Delivery Partner(s)	Timing of Delivery	Potential Cost / Funds Secured	Potential Funding		Notes
					Wider Sources	Developer Contributions	
		Council				Fund	amenity of car parks in the historic town centre. Increase provision of wayfinding signs and landscaping. New car park off Childe Rd and street parking review underway.

## Community Clusters – Wider investment priorities

Investment Requirement	Level of Priority	Delivery Partner(s)	Timing of Delivery	Potential Cost / Funds Secured	Potential Funding		Notes
					Wider Sources	Developer Contributions	
<b>KINLET, BUTTON BRIDGE AND BUTTON OAK COMMUNITY CLUSTER AND ASSOCIATED PARISHES</b>							
<b>HOUSING AND COHESIVE, SUSTAINABLE COMMUNITIES</b>							
<b>ECONOMIC INVESTMENT AND OPPORTUNITY</b>							
<b>SOCIAL AND COMMUNITY INFRASTRUCTURE</b>							
<b>ENVIRONMENT AND CLIMATE CHANGE</b>							
Community Tree Scheme	KEY	Shropshire Council, Developers, Shropshire Council		C£2640 per ha planted with tree whips. C£260 per new street tree.	£5000 to be shared throughout the council and provision of 10,000 trees.		Run an extensive Community Tree Scheme to provide opportunities to enhance the natural environment of the area. Costs include planting, stakes, tree guards and watering to establish trees over first 3 years.
Develop a Hire Scheme at Kinlet School Playing Fields	KEY	Kinlet School, Shropshire					The Parish Council will support develop a scheme whereby any local group could hire Kinlet School playing fields for community use

Investment Requirement	Level of Priority	Delivery Partner(s)	Timing of Delivery	Potential Cost / Funds Secured	Potential Funding		Notes
					Wider Sources	Developer Contributions	
		Council, Kinlet Parish Council					at agreed times, including suitable supervision and insurance arrangements'.
Preserve the areas historical assets	KEY	Kinlet Parish Council, Shropshire Council, English Heritage				Neighbourhood Fund	The Parish Council has identified the need for a heritage scheme at Kinlet Colliery and for the access, restoration and interpretation scheme at New England.
<b>TRANSPORT AND ACCESSIBILITY</b>							
Provision for pick up and drop off point for school parents	PRIORITY	Parish Council. Shropshire Council				Neighbourhood Fund	Identified community priority.
Public Transport Improvements	KEY	Public Transport Providers, Shropshire Council, Kinlet Parish Council			Public Transport Providers		The Parish Council has identified the need to review the links between various transport routes including: 125 to Bridgnorth for Telford/Wolverhampton connections 125 to Kidderminster, potential extension of route to the railway station to enable further links
Improvements to bus shelters	KEY	Kinlet Parish Council, Shropshire Council					The Parish Council will continue to maintain and insure the 5 bus shelters in the parish.
Develop a community transport scheme	KEY	Kinlet Parish Council, Shropshire Council, Shropshire Link				Neighbourhood Fund	The Parish Council wish to explore the idea of a community transport scheme to meet the needs of those who cannot be catered for through mainstream public transport. They have identified: <ul style="list-style-type: none"> <li>• Seasonal shopping trips to major centres.</li> <li>• Access for young people and others to social and recreational facilities not served by public transport.</li> </ul>
Footpath and Bridleway Improvements	KEY	Kinlet Parish Council, Shropshire				Neighbourhood Fund	The Parish Council has identified the need for a number of footpath improvements including: <ul style="list-style-type: none"> <li>• Formalising a permissive footpath</li> </ul>

Investment Requirement	Level of Priority	Delivery Partner(s)	Timing of Delivery	Potential Cost / Funds Secured	Potential Funding		Notes
					Wider Sources	Developer Contributions	
		Council P3 Group, Landowners					<p>connection between Woodlands Holiday Home Park and the bridleway north of Dowles Brook</p> <ul style="list-style-type: none"> <li>• Complete missing links such as a lack of a north south connection from the Button Bridge area across the Borle Valley, limited connection into the Wyre Forest from the Severn Lodge area and the discontinuous bridleway between Kinlet and Chorley</li> <li>• More suitable links with neighbouring P3 groups bordering Worcestershire Parishes and Cleobury Country Partnership</li> <li>• Develop a graded system of walks and rides in order to be included in guidebooks/leaflets and encourage sustainable tourism.</li> <li>• General maintenance and minor repairs</li> </ul>

Investment Requirement	Level of Priority	Delivery Partner(s)	Timing of Delivery	Potential Cost / Funds Secured	Potential Funding		Notes
					Wider Sources	Developer Contributions	
<b>HOPTON WAFERS AND DODDINGTON COMMUNITY CLUSTER AND ASSOCIATED PARISHES</b>							
<b>HOUSING AND COHESIVE, SUSTAINABLE COMMUNITIES</b>							
Support for housing in Doddington	KEY	Developers, Hopton Wafers Parish Council					The Parish Council have identified some support for housing in the settlement.
Housing needs survey	KEY	Hopton Wafers Parish Council					The Parish Council plan to undertake a Housing needs survey to establish affordable housing requirements
<b>ECONOMIC INVESTMENT AND OPPORTUNITY</b>							
Employment opportunities	KEY	Hopton Wafers					Hopton Wafers Parish Council has identified that employment opportunities, in keeping

Investment Requirement	Level of Priority	Delivery Partner(s)	Timing of Delivery	Potential Cost / Funds Secured	Potential Funding		Notes
					Wider Sources	Developer Contributions	
		Parish Council, Developers, Shropshire Council					with a rural parish, would be looked upon with interest to reduce the number of residents commuting outside the area to work.
<b>SOCIAL AND COMMUNITY INFRASTRUCTURE</b>							
Emergency service provision	KEY	NHS England, West Mercia Police. Ambulance service					The Parish Council remain concerned about emergency service provision.
Improved Healthcare	KEY	NHS England, Hopton Wafers Parish Council Lobby Group, Volunteers			NHS England		The Parish Plan has identified: <ul style="list-style-type: none"> <li>• Strong support for a locally based ambulance.</li> <li>• Improvements to out-of-hours doctor's service.</li> <li>• Improvements to ambulance services.</li> <li>• Issues about Grid referencing and ability to find people.</li> <li>• Identified need for defibrillators to be installed at HW Village Hall, Garage and Doddington Heights Park</li> </ul>
Recreational facilities	KEY						The Parish Council seek provision of recreational facilities on Hopton Village Hall field e.g. bowling green
Infrastructure maintenance	KEY						Maintenance work at Doddington Village Hall road side fence and maintenance of retaining wall at Hopton Wafers Village Hall car park
<b>ENVIRONMENT AND CLIMATE CHANGE</b>							
Community Tree Scheme	KEY	Shropshire Council, Developers		£2640 per ha planted with tree whips. £260 per new street tree.	£5000 to be shared throughout the council and provision of 10,000 trees.		Run an extensive Community Tree Scheme to provide opportunities to enhance the natural environment of the area. Costs include planting, stakes, tree guards and watering to establish trees over first 3 years.
Support for renewable energy	KEY	Hopton Wafers				Neighbourhood Fund	The Parish Council have identified a desire to have schemes and will view any proposals

Investment Requirement	Level of Priority	Delivery Partner(s)	Timing of Delivery	Potential Cost / Funds Secured	Potential Funding		Notes
					Wider Sources	Developer Contributions	
		Parish Council					with interest.
More recycling bins	KEY	Shropshire Council, Hopton Wafers Parish Council					
Signs for Fly-tipping	KEY	Hopton Wafers Parish Council, Clee Hill Partnership					The parish council have identified that Signs to warn people that Fly-tipping is being monitored.
Severn Trent	KEY	Severn Trent					Application to Severn Trent for sewerage is being processed.
Maintenance of ditches and drains	KEY	Landowners Shropshire Council					The PC would seek improved maintenance of ditches and drains by landowners and Highways.
<b>TRANSPORT AND ACCESSIBILITY</b>							
Improved Footpaths	KEY	Hopton Wafers Parish Council, Volunteers				Neighbourhood Fund	The Parish council have identified that footpaths are not well publicised and would like to map local footpaths. They also believe stone tracks provide poor access to properties and would like a FAQ to publicise the issues. The PC also highlight that signage improvements to footpaths are required, as some are overgrown and blocked.
Improvements to bus service	KEY	Hopton Wafers Parish Council, Bus Company Volunteers,				Neighbourhood Fund	Hopton Wafers Parish Council has identified that Doddington bus shelter does not allow a clear sight of buses and will attempt to obtain funding to remodel or replace the shelter. Hopton Wafers Parish Council have also identified general concerns about the 2L service and that: <ul style="list-style-type: none"> <li>• Bus timetables are not readily available and will do monthly checks to on timetables they display at shelters, village halls and local garage.</li> </ul>

Investment Requirement	Level of Priority	Delivery Partner(s)	Timing of Delivery	Potential Cost / Funds Secured	Potential Funding		Notes
					Wider Sources	Developer Contributions	
							<ul style="list-style-type: none"> <li>There are no proper bus shelters in certain places, so aim to provide simple, clearly marked stop signs with timetables.</li> <li>Doddington bus shelter does not allow a clear sight of buses</li> <li>Mounting buses without low steps is difficult- discuss with bus operators.</li> <li>A bus to Tenbury Wells and Worcester would be well supported</li> </ul>
Road safety	KEY	Shropshire Council					<ul style="list-style-type: none"> <li>Speeding concerns through Hopton Wafers village and across the common.</li> <li>HGV restrictions sought through HW village and on Stockhall Lane</li> <li>Increasing concerns of debris and surface water runoff from New Rd on to A4117</li> </ul>

Investment Requirement	Level of Priority	Delivery Partner(s)	Timing of Delivery	Potential Cost / Funds Secured	Potential Funding		Notes
					Wider Sources	Developer Contributions	
<b>ORETON, FARLOW AND HILL HOUSES COMMUNITY CLUSTER AND ASSOCIATED PARISHES</b>							
<b>HOUSING AND COHESIVE, SUSTAINABLE COMMUNITIES</b>							
<b>ECONOMIC INVESTMENT AND OPPORTUNITY</b>							
<b>SOCIAL AND COMMUNITY INFRASTRUCTURE</b>							
Improvements to village hall	PRIORITY	Farlow and Oreton Parish Council				Neighbourhood Fund	The Parish Council has expressed a need for the improvement or refurbishment of the village hall.
Reintroduce village services	PRIORITY	Farlow and Oreton Parish Council				Neighbourhood Fund	The Parish Council have identified the reintroduction of village shop, post office and pub as a local priority
<b>ENVIRONMENT AND CLIMATE CHANGE</b>							
Flood defence programme	PRIORITY	Shropshire				Neighbourhood	The Parish Council has identified a need for a

Investment Requirement	Level of Priority	Delivery Partner(s)	Timing of Delivery	Potential Cost / Funds Secured	Potential Funding		Notes
					Wider Sources	Developer Contributions	
		Council, Farlow and Oreton Parish Council				Fund	flood defence programme for area at New Inn and Oreton Road junction.
Community Tree Scheme	KEY	Shropshire Council, Developers		C£2640 per ha planted with tree whips. C£260 per new street tree.	£5000 to be shared throughout the council and provision of 10,000 trees.		Run an extensive Community Tree Scheme to provide opportunities to enhance the natural environment of the area. Costs include planting, stakes, tree guards and watering to establish trees over first 3 years.
<b>TRANSPORT AND ACCESSIBILITY</b>							
Highway improvements	KEY	Shropshire Council				Neighbourhood Fund	The Parish Council have identified need for improvements to highways i.e. layby for passing vehicles.

Investment Requirement	Level of Priority	Delivery Partner(s)	Timing of Delivery	Potential Cost / Funds Secured	Potential Funding		Notes
					Wider Sources	Developer Contributions	
<b>SILVINGTON, BROMDON, LOUGHTON AND WHEATHILL COMMUNITY CLUSTER AND ASSOCIATED PARISHES</b>							
<b>HOUSING AND COHESIVE, SUSTAINABLE COMMUNITIES</b>							
<b>ECONOMIC INVESTMENT AND OPPORTUNITY</b>							
<b>SOCIAL AND COMMUNITY INFRASTRUCTURE</b>							
<b>ENVIRONMENT AND CLIMATE CHANGE</b>							
Heritage at Risk register	KEY	Shropshire Council, English Heritage	ongoing			Neighbourhood Fund	English Heritage 2010 Heritage at Risk register includes the south range of Silvington Manor in Wheathill. Engage local groups to identify future Buildings at Risk.

Investment Requirement	Level of Priority	Delivery Partner(s)	Timing of Delivery	Potential Cost / Funds Secured	Potential Funding		Notes
					Wider Sources	Developer Contributions	
Community Tree Scheme	KEY	Shropshire Council, Developers		£2640 per ha planted with tree whips. £260 per new street tree.	£5000 to be shared throughout the council and provision of 10,000 trees.		Run an extensive Community Tree Scheme to provide opportunities to enhance the natural environment of the area. Costs include planting, stakes, tree guards and watering to establish trees over first 3 years.
<b>TRANSPORT AND ACCESSIBILITY</b>							
Provision of a bus stop	PRIORITY	Shropshire Council, Wheathill Parish Council				Neighbourhood Fund	The Parish Council has identified a need for a bus stop, to be positioned at an appropriate place on the Ludlow- Bridgnorth road within the Parish
Provision of lay-by(s)	KEY	Shropshire Council					Including provision of lay-by on Bromdon to Silvington Road

Investment Requirement	Level of Priority	Delivery Partner(s)	Timing of Delivery	Potential Cost / Funds Secured	Potential Funding		Notes
					Wider Sources	Developer Contributions	
<b>STOTTESDON, CHORLEY AND BAGGINSWOOD COMMUNITY CLUSTER AND ASSOCIATED PARISHES</b>							
<b>HOUSING AND COHESIVE, SUSTAINABLE COMMUNITIES</b>							
Production of housing needs survey	KEY	Stottesdon and Sidbury Parish Council, Shropshire Council					The Parish Council has identified that current housing needs should be surveyed and an estimate provided of new homes needed by type and tenure, including affordable properties.
<b>ECONOMIC INVESTMENT AND OPPORTUNITY</b>							

Investment Requirement	Level of Priority	Delivery Partner(s)	Timing of Delivery	Potential Cost / Funds Secured	Potential Funding		Notes
					Wider Sources	Developer Contributions	
Opportunities for Local Jobs and Businesses	KEY	Stottesdon and Sidbury Parish Council, Local businesses, DWP	Ongoing				<p>The Parish Council have identified a need to</p> <ul style="list-style-type: none"> <li>• Work with local employers to support and develop local training and apprenticeship schemes.</li> <li>• Promote government funding for farming and other rural businesses.</li> <li>• Explore the possibility of local support for people re/entering workforce.</li> </ul>
Support for local businesses and agriculture	KEY	Stottesdon and Sidbury Parish Council					Identified community priority.
<b>SOCIAL AND COMMUNITY INFRASTRUCTURE</b>							
Road/lengthsman scheme	PRIORITY	Parish Council				Neighbourhood Fund	Identified community priority. To enable enhancement and measure of control of the poor surface condition of highways
Policing and Community Safety	KEY	Stottesdon and Sidbury Parish Council, Parish Watch, Local Joint	Ongoing				<p>The Parish Council has identified need to :</p> <ul style="list-style-type: none"> <li>• Liaise with police re planned changes to service.</li> <li>• Improve communication with police.</li> </ul>
Support the Parish Watch	KEY	Stottesdon and Sidbury Parish Council	Ongoing				Identified community priority.
<b>ENVIRONMENT AND CLIMATE CHANGE</b>							
Monitor utilities capacity in the area	KEY	Stottesdon and Sidbury Parish Council, Shropshire Council					Identified community priority.

Investment Requirement	Level of Priority	Delivery Partner(s)	Timing of Delivery	Potential Cost / Funds Secured	Potential Funding		Notes
					Wider Sources	Developer Contributions	
Enhanced liaison with the Environment Agency	KEY	Stottesdon and Sidbury Parish Council					Identified community priority. Key engagement issues include fluvial and pluvial flooding.
Scenic Views and Natural Habitats	KEY	Stottesdon and Sidbury Parish Council, Willowden, School, P3 group	Ongoing				The Parish Council has identified need to: <ul style="list-style-type: none"> <li>• Support for farming and local businesses.</li> <li>• Support initiatives to keep river clean and clear.</li> <li>• Support initiatives to control litter.</li> <li>• Maintenance footpaths and signage.</li> </ul>
Community Tree Scheme	KEY	Shropshire Council, Developers		C£2640 per ha planted with tree whips. C£260 per new street tree.	£5000 to be shared throughout the council and provision of 10,000 trees.		Run an extensive Community Tree Scheme to provide opportunities to enhance the natural environment of the area. Costs include planting, stakes, tree guards and watering to establish trees over first 3 years.
<b>TRANSPORT AND ACCESSIBILITY</b>							

## Rural Hinterland – Wider investment priorities

Investment Requirement	Level of Priority	Delivery Partner(s)	Timing of Delivery	Potential Cost / Funds Secured	Potential Funding		Notes
					Wider Sources	Developer Contributions	
<b>BORASTON PARISH</b>							
<b>HOUSING AND COHESIVE, SUSTAINABLE COMMUNITIES</b>							
<b>ECONOMIC INVESTMENT AND OPPORTUNITY</b>							
<b>SOCIAL AND COMMUNITY INFRASTRUCTURE</b>							

Investment Requirement	Level of Priority	Delivery Partner(s)	Timing of Delivery	Potential Cost / Funds Secured	Potential Funding		Notes
					Wider Sources	Developer Contributions	
<b>ENVIRONMENT AND CLIMATE CHANGE</b>							
Community Tree Scheme	KEY	Shropshire Council, Developers		C£2640 per ha planted with tree whips. C£260 per new street tree.	£5000 to be shared throughout the council and provision of 10,000 trees.		Run an extensive Community Tree Scheme to provide opportunities to enhance the natural environment of the area. Costs include planting, stakes, tree guards and watering to establish trees over first 3 years.
<b>TRANSPORT AND ACCESSIBILITY</b>							

Investment Requirement	Level of Priority	Delivery Partner(s)	Timing of Delivery	Potential Cost / Funds Secured	Potential Funding		Notes
					Wider Sources	Developer Contributions	
<b>CORELEY PARISH</b>							
<b>HOUSING AND COHESIVE, SUSTAINABLE COMMUNITIES</b>							
<b>ECONOMIC INVESTMENT AND OPPORTUNITY</b>							
<b>SOCIAL AND COMMUNITY INFRASTRUCTURE</b>							
Litter Issues	KEY	Coreley Parish Council					Identified community priority.
Newsletter	KEY	Coreley Parish Council				Neighbourhood Fund	Identified community priority.
<b>ENVIRONMENT AND CLIMATE CHANGE</b>							
Community Tree Scheme	KEY	Shropshire Council, Developers		C£2640 per ha planted with tree whips. C£260 per new street tree.	£5000 to be shared throughout the council and provision of 10,000 trees.		Run an extensive Community Tree Scheme to provide opportunities to enhance the natural environment of the area. Costs include planting, stakes, tree guards and watering to establish trees over first 3 years.
<b>TRANSPORT AND ACCESSIBILITY</b>							
Improvements of local highways	PRIORITY	Shropshire Council,	Ongoing			Neighbourhood Fund	The Parish Councils have identified a need for improvements to the local roads and enhancement of the ford area.

Investment Requirement	Level of Priority	Delivery Partner(s)	Timing of Delivery	Potential Cost / Funds Secured	Potential Funding		Notes
					Wider Sources	Developer Contributions	
		Coreley Parish Council					

Investment Requirement	Level of Priority	Delivery Partner(s)	Timing of Delivery	Potential Cost / Funds Secured	Potential Funding		Notes
					Wider Sources	Developer Contributions	
<b>MILSON AND NEEN SOLLARS PARISHES</b>							
<b>HOUSING AND COHESIVE, SUSTAINABLE COMMUNITIES</b>							
Add to Housing stock	KEY	Parish Council, Developers	Dependent on development				Development subject to meeting policy criteria. Development restricted to conversion of existing structures e.g. Barn conversions and affordable housing to meet local need.
<b>ECONOMIC INVESTMENT AND OPPORTUNITY</b>							
Parish Lengthsman	PRIORITY	Shropshire Council, Parish Council	April 15	£4000 per annum			Self-employed person, 8 hours per week split between parishes
Converting large buildings and sheds into smaller self-contained "quiet" businesses	KEY	Parish Council, Developers	Dependent on development				The Parish Council support utilisation of existing redundant buildings for small workshops taking into consideration noise pollution. Development subject to meeting policy criteria.
Encourage Bed and Breakfast and self-catering schemes.	KEY	Parish Council, Developers	Dependent on development				The Parish Council see this as a way to generate employment and tourism. Development subject to meeting policy criteria.
Develop local "Cottage industry" or "Home Office" schemes granting change of use to part or all of dwelling	KEY	Parish Council, Developers	Dependent on development				The Parish Council would support utilisation of existing redundant buildings to small workshops taking into consideration noise pollution. Development subject to meeting policy criteria.
<b>SOCIAL AND COMMUNITY INFRASTRUCTURE</b>							
Install defibrillators in both Milson and Neen Sollars payphone Kiosks	PRIORITY	British heart foundation / WMA	May 15	£4,000	British Heart Foundation/West Midland Ambulance		K6 Payphone Kiosk in Neen Sollars has been adopted, Milson KX100 Kiosk adoption will be 09/01/2015. Training, Maintenance and Telephone activation system ongoing cost

Investment Requirement	Level of Priority	Delivery Partner(s)	Timing of Delivery	Potential Cost / Funds Secured	Potential Funding		Notes
					Wider Sources	Developer Contributions	
					Services		£400.00 pa.
Victory Hall, Neen Sollars ~ Increase size and upgrade car park surface with gravel filled eco-grids,	KEY	Parish Council,	April 2016	£20,000			Car Park surface is worn and retains pools of rain water which in turn damages village hall floor
Victory Hall, Neen Sollars ~ Extend balcony to the East of the building both in depth and width.	KEY	Parish Council,	April 2016	£30,000			The Village Hall is restricted to 80 seated and 120 standing, additional exterior space will alleviate space constraints.
Provide car parking and seating to Milson Village Green	KEY	Parish Council,	April 2015	£2,000			To improve safety to visitors and Church users, preserve the Greens' borders and edges
Replace worn / damaged parish street furnisher	KEY	Parish Council,	Ongoing	£4,000			Notice Boards/ Signs/ Kiosks/ Bins/ Benches/ Planting/ Trees
<b>ENVIRONMENT AND CLIMATE CHANGE</b>							
Community Tree Scheme	KEY	Shropshire Council, Developers		£2640 per ha planted with tree whips. £260 per new street tree.	£5000 to be shared throughout the council and provision of 10,000 trees.		Run an extensive Community Tree Scheme to provide opportunities to enhance the natural environment of the area. Costs include planting, stakes, tree guards and watering to establish trees over first 3 years.
Clearance of River debris	PRIORITY	Env Agency, Shropshire Council, Land Owners	Ongoing	£5,000	DEFRA		The Parish Council has identified a need to enforce land owners riparian responsibilities. Safety of Ramblers on footpaths next to Rivers
Tree management on River banks	PRIORITY	Env Agency, Shropshire Council, Land Owners	Ongoing	£8,000	DEFRA		The Parish Council has identified a need to enforce land owners riparian responsibilities. Safety of Ramblers on footpaths next to Rivers
Property Flood Protection scheme	KEY	Shropshire Council,	Ongoing				The repair and renew grant available to properties flooded or flooding is inevitable
Promote PV development on rooftop/small developments (inc Village Hall)	KEY	Parish Council	Dependent on development	£8,000		Neighbourhood Fund	Generate sufficient renewable energy to reduce Village Hall costs Approximately £570 P/A

Investment Requirement	Level of Priority	Delivery Partner(s)	Timing of Delivery	Potential Cost / Funds Secured	Potential Funding		Notes
					Wider Sources	Developer Contributions	
Hydro turbine	KEY	Parish Council, developers	Dependent on development	£30,000	Public share scheme	Neighbourhood Fund	Second turbine generating 12Kw ( Total 25Kw = 110 MWh pa = 25 Houses)
Preservation of open spaces, footpaths, grade I & II listed sites	PRIORITY	Shropshire Council, Parish Council,	Ongoing	£2,500			Preserve visual amenity through maintaining Open Spaces, Develop plans to protect Open Spaces
Preservation of natural fauna and flora	PRIORITY	Shropshire Council, Parish Council,	Ongoing	£2,500			Preserve visual and environmental amenity through conservation of established hedge row and tree plantations, Develop plans to protect these areas
<b>TRANSPORT AND ACCESSIBILITY</b>							
Reduce vehicle size on Village lanes	KEY	Shropshire Council, Parish Council	Apr 15	£3000			Review with Highways how to restrict the size of vehicle in lanes and over bridge with use of Bollard restrictions
Excessive Vehicle weight on bridges	KEY	Shropshire Council, Parish Council	Apr 15	£3000			Review with Highways weight limit over Parish bridges and signage

Investment Requirement	Level of Priority	Delivery Partner(s)	Timing of Delivery	Potential Cost / Funds Secured	Potential Funding		Notes
					Wider Sources	Developer Contributions	
<b>NASH PARISH</b>							
<b>HOUSING AND COHESIVE, SUSTAINABLE COMMUNITIES</b>							
<b>ECONOMIC INVESTMENT AND OPPORTUNITY</b>							
<b>SOCIAL AND COMMUNITY INFRASTRUCTURE</b>							
<b>ENVIRONMENT AND CLIMATE CHANGE</b>							
Community Tree Scheme	KEY	Shropshire Council, Developers		C£2640 per ha planted with tree whips. C£260 per	£5000 to be shared throughout the council and		Run an extensive Community Tree Scheme to provide opportunities to enhance the natural environment of the area. Costs include planting, stakes, tree guards and

Investment Requirement	Level of Priority	Delivery Partner(s)	Timing of Delivery	Potential Cost / Funds Secured	Potential Funding		Notes
					Wider Sources	Developer Contributions	
				new street tree.	provision of 10,000 trees.		watering to establish trees over first 3 years.
<b>TRANSPORT AND ACCESSIBILITY</b>							

Investment Requirement	Level of Priority	Delivery Partner(s)	Timing of Delivery	Potential Cost / Funds Secured	Potential Funding		Notes
					Wider Sources	Developer Contributions	
<b>NEEN SAVAGE PARISH</b>							
<b>HOUSING AND COHESIVE, SUSTAINABLE COMMUNITIES</b>							
<b>ECONOMIC INVESTMENT AND OPPORTUNITY</b>							
<b>SOCIAL AND COMMUNITY INFRASTRUCTURE</b>							
<b>ENVIRONMENT AND CLIMATE CHANGE</b>							
Community Tree Scheme	KEY	Shropshire Council, Developers		C£2640 per ha planted with tree whips. C£260 per new street tree.	£5000 to be shared throughout the council and provision of 10,000 trees.		Run an extensive Community Tree Scheme to provide opportunities to enhance the natural environment of the area. Costs include planting, stakes, tree guards and watering to establish trees over first 3 years.
<b>TRANSPORT AND ACCESSIBILITY</b>							
Improvements of local highways	PRIORITY	Shropshire Council, Neen Savage Parish Council	Ongoing			Neighbourhood Fund	The Parish Councils have identified a need for improvements to the local roads and enhancement of the ford area.

# APPENDIX A: COMMUNITY ENGAGEMENT AND CONSULTATION FOR CLEOBURY MORTIMER PLACE PLAN AREA

## ***Community Led Plans***

### *Cleobury Mortimer Parish Plan (2014)*

The following have been taken from the Cleobury Mortimer Parish Plan as identified community needs and priorities:

- Getting the balance of housing development right with infrastructure to match
- Get the new Medical Centre built with the right facilities (this is now complete)
- Support business development and training especially for young people
- Retain a local Police presence to take action on speeding, drug and alcohol use
- Accurately review parking for the safety of all road users
- More community and social events will create a greater sense of community. Enable better access to facilities and activities for young people and families with children
- Make youth facilities a priority

These community recommendations are supported by action points to achieve the recommendations.

### *Hopton Wafers (2012)*

The following have been taken from the Hopton Wafers Community Led Plan as identified community needs and priorities:

- Transport
- Housing, Affordable Housing and Planning
- Environment
- Renewable Energy
- Improved services, including healthcare
- Community, governance and transparency

### *Oreton, Farlow and Hillhouses*

The following have been taken from the Farlow and Oreton Parish Plan as identified community needs and priorities:

- Erection of noticeboards
- Organisation of community events
- Develop regular community newsletter
- Create website
- Approach Shropshire Council regarding new policy and encourage/lobby for doorstep collection of plastics recycling
- Increase local cemetery space
- Lack of community facilities, specifically Public House and Shop
- Inadequate maintenance of local roads
- Traffic speed on rural roads
- Concerns over Parish security
- Carry out review of all paths/bridleways and establish problems
- Setting up of local Parish Paths Partnership with volunteers to support long term management and maintenance
- Investigate any local volunteers interested in producing design statement

- Established lines of communication for local businesses

#### *Stottesdon and Sidbury Parish Plan (2012)*

The following have been taken from the Stottesdon Parish Plan as identified community needs and priorities:

- Support Stottesdon school in delivering its development plan
- Identify land and bid for funding to provide sports and play facilities
- Support playgroup in improving its accommodation
- Explore options for youth outreach work
- Support GP practice in expanding surgery facilities, including better parking provision
- Respond to consultations on hospitals and monitor performance of ambulance service.
- Support shop committee to establish community shop and look at options for Post Office service
- Carry out survey of housing needs
- Continue to monitor condition of roads and report maintenance problems to Shropshire Council
- Continue with local 'Lengthsman' scheme
- Work with local employers to support and develop training schemes
- Promote government funding for farming and rural businesses
- Continue to improve communication between Parish Watch and police and discuss proposed changes to police service
- Promote dangers of speeding vehicles
- Support initiatives to control litter and keep river clean and clear
- Maintain footpaths and signage

#### *Kinlet Parish Plan Revised Action Plan (2012)*

The following have been taken from the Kinlet Parish Plan as identified community needs and priorities:

- Bid for a further project to meet local housing needs identified within the needs assessment.
- Monitor the potential for "exception sites" on which low-cost housing for local needs could be approved.
- Encourage and monitor use of existing partly subsidised public transport service.
- Publicise and seek to enhance direct links to other services from Kidderminster bus and rail stations following extension of the 125 service to Stourbridge.
- Identify and publicise community transport available to meet needs that cannot be catered for through mainstream public transport, including
  - occasional /seasonal shopping and recreational trips to major centres beyond Highley, Bridgnorth, Bewdley, Kidderminster
  - Access for young people and others to social and recreation facilities not served
- Maintain the 5 bus shelters in the parish, including timetable displays
- The Parish Council will continue to liaise with the Police and Shropshire Council regarding speeding in Kinlet, Button Oak and wherever else it becomes a problem.
- Monitor effectiveness of interactive speed warning signs in Kinlet and Button Oak.
- The Parish Council will reconsider approaching Shropshire Council with a view to entering a Parish Highway Maintenance Agreement, for the following:
  - an agreed 'watching brief' on maintenance problems on all roads in the parish (activity proportionate to the safety of volunteers on different types of road).

- a local 'lengthsman' scheme supported by Shropshire Council grant for an agreed schedule of minor works – subject to safety issues.
- The Parish Council will support the maintenance of historic milestones in the parish. Informed by best practice in adjacent parishes.
- Ensure maximum publicity for local waste collection arrangements, 'bring' sites/facilities and recycling initiatives.
- Encourage and provide training for volunteer litter-pickers.
- Work with Kinlet School to build on its EcoSchool / Forest School.
- Continue to publicise furniture schemes operating within the Area.
- Liaise with Kinlet Countryside Group (KCG) to support a programme of actions including the following:
  - Regular inspection and maintenance (minor repairs) of public rights of way.
  - Continue to identify and publicise a range of graded walks to promote sustainable tourism, support the local economy and encourage healthy lifestyles. Where possible pursue funding for this.
  - Consider cross boundary matters.
  - Identify and address 'missing links' within the parish's rights of way network.
  - Lead guided walks and runs in the parish.
  - Liaise with the Forestry Commission about public visits to view their activities.
- Support the activities of the Four Parishes Heritage Group and Kinlet History Group, which engage local people and stimulate interest.
- Support proposals for land / buildings diversification by local farmers which benefit the local economy and promote employment, providing these are environmentally sensitive and otherwise appropriate.
- Pursue funding opportunities through the Local Joint Committee (LJC).
- Ensure the Parish Watch contact network is complete.
- Ensure information leaflet is up to date and has been distributed to all households.
- Maintain regular parish councillor surgeries at suitable locations around the parish.
- Engagement of young people:
  - Support Cleobury youth partnership in assessing and meeting local needs
  - Develop fresh pupils' opinion survey at Kinlet School, and act as appropriate on findings
  - Work with Kinlet Newsletter to publish monthly Parish Council news/reports, share parish information and promote local activities / events
- Maintain and develop the Parish Council website in order to publicise parish activities, the Parish Plan and its progress
- The Parish Council and Parish Planning Group will identify further volunteers within the parish to champion particular areas of work and form sub-groups to pursue and report at agreed intervals.
- Raise awareness, stimulate interest and encourage increased candidature for the Parish Council (and other) elections develop 'welcome pack' proposal for newcomers to the parish.

#### *Boraston*

No Parish Plan currently exists.

#### *Coreley*

The Parish Council have had a meeting about the process, further updates will be provided in due course.

#### *Milson and Neen Sollars*

No Parish Plan currently exists.

#### *Nash*

No Parish Plan currently exists.

#### *Neen Savage*

The Parish Council has expressed an interest in developing a Parish Plan, further updates will be provided in due course.

#### *Wheathill*

The Parish Council is commencing work on a Parish Plan. Further information will be available in due course.

### **Local Joint Committee**

Cleobury Mortimer, Hopton Wafers, Hopton Wafers, Nash, Boraston, Kinlet, Milson and Neen Sollars, Coreley, Neen Savage, Farlow and Wheathill are located within the Cleobury and Rural Local Joint Committee Area. The following needs and priorities have been raised by the local community as part of Local Joint Committee meetings:

#### *Cleobury and Rural Local Joint Committee*

- Road safety, speeding and HGVs
- Youth opportunities and facilities
- Police and community safety
- Housing needs
- Flooding
- Highways
- Waste
- Health care provision (especially a new doctors surgery)
- The local economy, broadband and tourism

### **Other Community Consultations**

#### **Local Development Framework Core Strategy- Issues and Options Consultation (January- March 2009)**

##### *Farlow Parish Council representations on the Core Strategy*

(Representation reference no CORE STRATEGY002369/00001/001)

- Strong demand for family homes / affordable housing

#### **Local Development Framework Core Strategy- Policy Directions Consultation (August –October 2009)**

##### *Kinlet Parish Council representations on the Core Strategy*

(Representation reference no CORE STRATEGY 002647/00001/001)

- Agriculture plays an important part in the county.

*Neen Savage Parish Council representations on the Core Strategy* (Representation reference no CORE STRATEGY002415/00001/004)

- Transport needs of rural communities

#### **Local Development Framework Core Strategy- Final Plan Publication (February-March 2010)**

*Stottesdon and Sidbury Parish Council representations on the Core Strategy.*

- Encourage private sector to build lifetime homes as housing associations have to - provision for lifts and ground floor showers etc.
- Pleased to see that smaller communities will have housing to meet local housing needs with the scale appropriate to the area.
- Commend the consideration of Parish Plans and Village Design statements in the planning of future development. Parish Council's should include funds in their precept to carry out these.
- 33% local needs affordable housing within developments - there needs to be an explicit and uniform condition put on these homes.
- We are pleased that the plan supports tourism and this is vital to a rural County such as Shropshire.
- Water Management – this is too 'Severn centric' – this does not take into account the Southern Shropshire River Teme catchment area, together with all its problems.
- There is no definition of a 'market town' – clarification is needed of this.
- No consideration has been given to military establishments re: impact.
- Public transport – needs to have a degree of flexibility. The Link service that has been set up has left a large gap in transport for tourism.
- Secure by Design needs to be sensitive to the area.
- Difference between social rented and intermediate rent should be pepper-potted on estates however small.
- There needs to be flexibility in the plan for rural business.

**Local Development Framework Site Allocations and Management of Development DPD (SAMDev) – Issues and Options Consultation (April- June 2010)**

*Cleobury Mortimer Parish Council representations on the SAMDev*

(Representation reference no SAMDEV DPD/04IOP/002348/00001)

- Sewerage capacity
- Larger premises for the medical centre
- Parking and traffic flow and it is suggested that there is a full open consultation on parking and its connected concerns with a view to day time restrictions on the High Street.
- More car parking if the opportunity arose
- The cemetery on Ludlow Road should have an opportunity to expand by 20% to cover long term requirements for space
- Re-open the swimming pool with the Pioneer Centre or another partner
- Maintenance of leisure and outdoor spaces and more provision in line with development. It is suggested the area down Catherton Road would be ideal for this.

*Hopton Wafers Parish Council representations on the SAMDev*

(Representation reference no SAMDEV DPD/04IOP/002383/00001)

- Sewage treatment plant in Doddington
- Affordable homes for local people in Doddington and Hopton Wafers
- Retention of the primary school in Hopton Wafers

*Farlow Parish Council representations on the SAMDev*

(Representation reference no SAMDEV DPD/04IOP/002639/00001)

- Infrastructure for employment should precede any more housing.
- Lacon Childe school would need extension before new development.
- A4117 is inadequate to support further development.
- Small scale development where local need is demonstrated

*Stottesdon, Sidbury Parish Council representations on the SAMDev  
(Representation reference no SAMDEV DPD/04IOP/002443/00003)*

- The sewerage system, as well as water and electricity supplies in Chorley would need to be expanded if any further development took place. The services also require investigation in Stottesdon
- The Brown Clee Medical Practice has a branch surgery in Stottesdon which will require expansion as patient numbers increase. There will also be the need for extra parking facilities.
- The Village Hall in Chorley has inadequate parking area
- Public transport in Stottesdon is poor
- Additional road repairs and more 'passing places' are required
- Improved broadband is required in Stottesdon
- Retention of the Fighting Cock public house and its adjacent general store in Stottesdon is vital
- Small scale housing, limited in number is needed. This should include market and shared ownership housing, together with rented in perpetuity which would include bungalows.
- The retention of the primary school in Stottesdon is essential.
- School playing field in Stottesdon should be protected.
- Opportunities to create small industrial units on appropriate sites should be encouraged
- Change of use applications to existing farm buildings should be encouraged in Stottesdon.

*Boraston Parish Meeting representations on the SAMDev  
(Representation reference no SAMDEV DPD/04IOP/06694/00001)*

- No substantial development but recognise potential for reuse of redundant agricultural buildings within the settlement

*Neen Savage Parish Council representations on the SAMDev  
(Representation reference no SAMDEV DPD/04IOP/002415/00002)*

- Superspeed broadband required
- Improved roads to Cleobury needed
- Improved rural bus services

**Investing in Shropshire's Future- Local Infrastructure and Investment Workshop with Cleobury Mortimer Parish Council (20<sup>th</sup> September 2010)**

- Additional off street parking needed
- Manage congestion and volume of traffic on the A4117 which cuts through Cleobury
- Current health care facilities serve a wide area and the provision does not meet the needs of those who rely on them
- Loss of Manor House on the High Street has meant a lack of adequate elderly care facilities in Cleobury.

**Cleobury Mortimer Community Toolkit Event – 20<sup>th</sup> January 2011**

The following activities, facilities, services and infrastructure were considered to be the most important community assets by the event attendees:

Activities:

- Youth groups and clubs
- Children and family activities
- Sports Activities

Facilities:

- Café/pub/restaurant
- Open spaces and play areas
- School

Services:

- Healthcare
- Shops
- Police/ emergency services

Infrastructure:

- Regular public transport
- Job opportunities
- Broadband speed and connectivity

Full information and feedback from the Cleobury Mortimer Toolkit event is available at:

<http://www.shropshire.gov.uk/factsfigures.nsf/open/C6BE79E370240015802577760045C7C5>



## APPENDIX B: CLEOBURY PLACE PLAN AREA PROFILE

### ***Social & Demographic Characteristics***

*Source: 2011 Census, Office for National Statistics, © Crown Copyright 2015.*

- In 2011, there were 7,809 residents in the Cleobury Mortimer Place Plan Area, an increase of 16.8% since 2001. The population of Shropshire Unitary Authority increased over the same period by 8.1%.
- Cleobury Mortimer Place Plan Area had a smaller working age (18 to 64) population (57.4%) than the Shropshire average (59.3%). The older resident population was more significant than in Shropshire, with 23.8% of residents aged 65 and over (20.7% in Shropshire).
- In the Place Plan Area in 2011, there were 2,459 families. 2.1% of these families (52 families) were concealed families, a higher proportion than in Shropshire (1.3%). In the 2011 Census, each family in a household had a Family Reference Person, and in one family households, this person was also the Household Reference Person. However, a concealed family is one that lives with at least one other family and does not include the Household Reference Person, meaning that they will be 'concealed' in many household statistics. In the Cleobury Mortimer Place Plan Area, 17 concealed families (32.7%) had a Family Reference Person aged 65 and over, compared to 23.2% in Shropshire. In terms of family status, 28 concealed families (53.8%) were couple families with no children, compared to 47.8% in Shropshire.
- 98.7% of residents aged 3 and over (7,547 residents) spoke English as their main language, a larger proportion than the Shropshire average (97.9%). The most spoken languages apart from English included Hungarian (13), Polish (12) and Slovak (10). Of the 97 residents (aged 3+) who said that English was not their main language, 15 people could not speak English well and 1 person could not speak English at all.
- The 2011 Census showed that the Place Plan Area had a Black and Minority Ethnic (BME) Group population of 106 (1.4%), a smaller proportion of residents than in Shropshire (2.0%). The largest broad BME group was Asian/Asian British (60 people or 0.8%, compared to 1.0% in Shropshire).
- There were 12 communal establishments in the Place Plan Area. 151 people lived in the communal establishments, of which 115 were residents.

### ***Business***

*Source: 2011 Census, Office for National Statistics, © Crown Copyright 2015.*

- Cleobury Mortimer supports a workforce of approximately 800 people (BRES 2010, Office for National Statistics, © Crown Copyright 2012).
- The largest employment sectors in Cleobury Mortimer are manufacturing, which accounts for 18.3% of jobs (11.6% in Shropshire), retail, accounting for 13.8% of jobs (11.9% in Shropshire) and health (12.8% of jobs against 17.5% for Shropshire).
- Wholesale also accounts for almost a tenth of jobs.
- 4,050 people (or 62.1% of the 16+ population) in the Place Plan Area were economically active, compared to 63.5% in Shropshire. More than a quarter of economically active people in employment (aged 16+) were self-employed (28.5%

compared to 19.4% in Shropshire). Over half of all self-employed people were aged 50 and above (55.3%) compared to 49.7% in Shropshire.

- More than three-tenths of households in Cleobury Mortimer Place Plan Area had no adults in employment (1,013 households, or 31.8% compared to 33.3% in Shropshire).
- 27.9% of all residents aged 16+ were retired compared to just over a quarter of residents in Shropshire (25.4%). A smaller proportion in the Place Plan Area were unemployed but available to work compared to Shropshire (2.1% and 3.3% respectively).
- 12.0% of all usual residents in Cleobury Mortimer Place Plan Area provided some form of unpaid care, a larger proportion than the Shropshire average (11.2%). In total 201 residents in the Place Plan Area (2.6%) provided 50 or more hours of unpaid care a week, including 1 young person (0-15 years old) and 89 people of retirement age (65+).
- A larger proportion of residents aged 16+ had no qualifications (24.7%) compared to Shropshire (22.5%).
- Almost two-fifths (39.7%) of the population aged 16+ and in employment the week before the Census worked in standard occupation classifications 1-3 (managers, directors and senior officials, professional, associate professional and technical), compared to 38.8% in Shropshire.
- More than two-fifths of people (16+) in employment the week before the Census travelled 10km or more to work (43.3%), compared to 35.1% in Shropshire.

## **Housing and Households**

*Source: 2011 Census, Office for National Statistics, © Crown Copyright 2015.*

- In 2011, there were 3,391 dwellings, including 3,182 household spaces with at least one usual resident. 209 household spaces had no usual residents. At 6.2%, this was a higher proportion than the Shropshire average (4.4%).
- Over half of the dwellings in the Place Plan Area were detached properties; at 53.9%, this was a considerably higher proportion than in Shropshire (39.5%). There were a significantly larger proportion of caravans or other mobile or temporary structures (8.8%) compared to Shropshire (0.8%).
- The average household size in the Place Plan Area was 2.4 people per household, a slightly higher average than in Shropshire (2.3). There was also a higher average number of bedrooms per household (3.1) compared to the Shropshire average (2.9).
- Cleobury Mortimer Place Plan Area had a larger proportion of older, childless households than the Shropshire average. 22.4% of households had either one working age adult (aged 16-64) and one adult aged 65+ with no children or two adults aged 65+ with no children compared to 16.7% in Shropshire.
- An equal proportion of all Household Reference Persons (a person selected to represent a whole household in statistics) were aged 35 to 54 (35.4%, compared to 36.8% in Shropshire) or 65 and over (35.4%, compared to 31.6% in Shropshire).

## **Transport & Infrastructure**

Source: 2011 Census, Office for National Statistics, © Crown Copyright 2015.

- A considerably lower proportion of households (7.9%) were without a car or a van compared with the Shropshire average (15.8%). Households were more likely to have multiple forms of personal transport; over half of households (54.4%) owned 2 or more cars or vans, compared with 42.0% in Shropshire.
- Over two-fifths of 16 to 74 year olds travelled to work either as drivers or passengers in a car or van (47.5%), the same proportion as in Shropshire.
- 9.7% of people aged 16 to 74 worked mainly at or from home, compared with 5.6% in Shropshire.

## **Natural and historic environment**

- There are several conservation areas in the Place Plan area, including Cleobury Mortimer, Boraston and Neen Sollars.
- Within the Cleobury Mortimer Place Plan Area, sites that have been identified as listed include: The Church of St Mary, Manor House – High Street and The Vicarage – Church Street. A Scheduled Monument (Motte Castle) is also present.
- Walking routes in the area include The Simon Evans Way, The School Outing and The Bransley Twist. (<http://www.shropshirewalking.co.uk/>).
- The Jack Mytton riding route passes nearby Cleobury Mortimer (<http://www.shropshireriding.co.uk/>).
- The Shropshire Hills are located in the area, north of the town itself.

## **Information about Cleobury Mortimer available online:**

- Nomis Profiles (Labour Market statistics): <https://www.nomisweb.co.uk/>
- LocalView maps of Shropshire, showing population estimates and Index of Multiple Deprivation 2010:  
<http://www.shropshire.gov.uk/factsfigures.nsf/open/F8C76E633C577BE8802570A0004CAB30>
- 2001 Census Profiles:  
<http://www.shropshire.gov.uk/factsfigures.nsf/open/2ADEBD903F793BA980257479004995EE>
- Development Trends Report:  
<http://www.shropshire.gov.uk/factsfigures.nsf/open/9E4117D110651F1E802574EA0033148B>