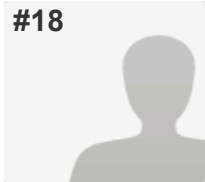


#18

**COMPLETE****Collector:** New Link (Web Link)**Started:** Monday, April 07, 2014 4:36:32 AM**Last Modified:** Monday, April 07, 2014 4:45:22 AM**Time Spent:** 00:08:50**IP Address:** 81.168.46.51

## PAGE 1

**Q1: Your details:**

Name:

Simon Lyon

Address:

**Q2: Are you acting on behalf of anyone?**

No

## PAGE 2

**Q3: Who are you acting on behalf of:***Respondent skipped this question*

## PAGE 3: Representation details

**Q4: Please give the policy/paragraph/policies map details for your first representation relates to:**

S18

**Q5: Is your representation in support or objection?**

Support

**Q6: In respect of your representation on the policy, paragraph or section of the policies map do you consider that the SAMdev is: See guidance notes sections 1 and 2 for the meanings of 'legally compliant' and 'sound'.**

Legally compliant

Yes

Sound

Yes

**Q7: If your representation considers the SAMDev plan is not sound, please say whether this is because it is: (tick as many as apply)***Respondent skipped this question***Q8: Please specify your reason for supporting or objecting. If you are objecting, you should make clear why the document is unsound having regard to the issues of 'legal compliance' or whether the document is not positively prepared, justified, effective or not consistent with national policy.**

I support the Samdev process because it has taken the view s of local people and altered were necessary in what I feel has been a democratic process. It could of taken less time though I feel to of avoided the 5 yr land supply problems we are now facing.

**Q9: Explain the changes you think should be made to the SAMdev Plan in order to make it legally compliant or sound. You should explain your suggested revisions to the policy, paragraph or section of the policies map and why this change would make the plan legally compliant or sound. Please be as precise as possible.***Respondent skipped this question***Q10: Do you wish to make another representation?**

No

## PAGE 4: Representation details 2

## SAMdev consultation 2014

|                                                                                                                                                                                                                                                                                                                                       |                                         |
|---------------------------------------------------------------------------------------------------------------------------------------------------------------------------------------------------------------------------------------------------------------------------------------------------------------------------------------|-----------------------------------------|
| <b>Q11: Please give the policy/paragraph/policies map details for your first representation relates to:</b>                                                                                                                                                                                                                           | <i>Respondent skipped this question</i> |
| <b>Q12: Is your representation in support or objection?</b>                                                                                                                                                                                                                                                                           | <i>Respondent skipped this question</i> |
| <b>Q13: In respect of your representation on the policy, paragraph or section of the policies map do you consider that the SAMdev is: See guidance notes sections 1 and 2 for the meanings of 'legally compliant' and 'sound'.</b>                                                                                                    | <i>Respondent skipped this question</i> |
| <b>Q14: If your representation considers the SAMDev plan is not sound, please say whether this is because it is: (tick as many as apply)</b>                                                                                                                                                                                          | <i>Respondent skipped this question</i> |
| <b>Q15: Please specify your reason for supporting or objecting. If you are objecting, you should make clear why the document is unsound having regard to the issues of 'legal compliance' or whether the document is not positively prepared, justified, effective or not consistent with national policy.</b>                        | <i>Respondent skipped this question</i> |
| <b>Q16: Explain the changes you think should be made to the SAMdev Plan in order to make it legally compliant or sound. You should explain your suggested revisions to the policy, paragraph or section of the policies map and why this change would make the plan legally compliant or sound. Please be as precise as possible.</b> | <i>Respondent skipped this question</i> |
| <b>Q17: Do you wish to make another representation?</b>                                                                                                                                                                                                                                                                               | <i>Respondent skipped this question</i> |

### PAGE 5: Representation details 3

|                                                                                                                                                                                                                                                                                                                                       |                                         |
|---------------------------------------------------------------------------------------------------------------------------------------------------------------------------------------------------------------------------------------------------------------------------------------------------------------------------------------|-----------------------------------------|
| <b>Q18: Please give the policy/paragraph/policies map details for your first representation relates to:</b>                                                                                                                                                                                                                           | <i>Respondent skipped this question</i> |
| <b>Q19: Is your representation in support or objection?</b>                                                                                                                                                                                                                                                                           | <i>Respondent skipped this question</i> |
| <b>Q20: In respect of your representation on the policy, paragraph or section of the policies map do you consider that the SAMdev is: See guidance notes sections 1 and 2 for the meanings of 'legally compliant' and 'sound'.</b>                                                                                                    | <i>Respondent skipped this question</i> |
| <b>Q21: If your representation considers the SAMDev plan is not sound, please say whether this is because it is: (tick as many as apply)</b>                                                                                                                                                                                          | <i>Respondent skipped this question</i> |
| <b>Q22: Please specify your reason for supporting or objecting. If you are objecting, you should make clear why the document is unsound having regard to the issues of 'legal compliance' or whether the document is not positively prepared, justified, effective or not consistent with national policy.</b>                        | <i>Respondent skipped this question</i> |
| <b>Q23: Explain the changes you think should be made to the SAMdev Plan in order to make it legally compliant or sound. You should explain your suggested revisions to the policy, paragraph or section of the policies map and why this change would make the plan legally compliant or sound. Please be as precise as possible.</b> | <i>Respondent skipped this question</i> |

### PAGE 6: Finally...

|                                                                                          |                                                                            |
|------------------------------------------------------------------------------------------|----------------------------------------------------------------------------|
| <b>Q24: Do you consider it necessary to attend and give evidence at the examination?</b> | No, I wish to pursue my representation through this written representation |
|------------------------------------------------------------------------------------------|----------------------------------------------------------------------------|

**Q25: If you wish to attend the examination please explain why you think this is necessary.**

*Respondent skipped this question*

**Q26: Do you wish to be notified of any of the following: (we will contact you using the details you have provided)**

|                                                         |     |
|---------------------------------------------------------|-----|
| When the SAMDev plan has been submitted for examination | Yes |
| When the Inspector's report is published                | Yes |
| When the SAMDev plan is adopted                         | Yes |