

LAND TO THE NORTH OF OSWESTRY

## **Landscape & Visual Impact Assessment Appendices**

April 2014

## APPENDIX 10.1

### Visual Impact Assessment Table

Appendix 10.1 Visual Impact Assessment Table

Viewpoint Location	Description	Summer/Winter View	Level of View's Importance			Degree of Visibility	Degree of Prominence	Receptor Sensitivity	Confidence	Magnitude of Impact	Significance of Impact	Direction of Change
			R/N	D	L							
5	<b>Traveling View - A5</b> - A long-range view of the site from the A5 bypass, looking towards the Hill Fort.	Winter	x			1	3	Low	High	Medium	Negligible	<b>Adverse</b> - partial loss of views of open fields landscape. <b>Beneficial</b> - Assimilates into existing townscape. Strong landscape framework. Magnitude minimised by landscape and likely to diminish over time as it matures.
		Summer	x			2	3	Low	Medium	Low	Negligible	
6	<b>Traveling View - Whittington road</b> - A long-range view of the site from the A5 bypass, looking towards the Hill Fort. Some views experienced by users of the footpath adjacent to the carriageway.	Winter	x			2	3	Medium	High	Medium	Minor	<b>Beneficial</b> - Assimilates into existing townscape. Strong landscape framework. Magnitude minimised by landscape and likely to diminish over time as it matures.
		Summer	x			2	3	Medium	Medium	Medium	Minor	
9	<b>Representative view of Hill Fort footpath</b> - A long range view of the site from the potentially sensitive location of the HillFort.	Winter	x			1	2	High	High	Medium	Moderate	<b>Adverse</b> - Partial loss of open fields. <b>Beneficial</b> - Assimilates into existing townscape and removal of poor quality agricultural buildings. Strong landscape framework. Magnitude minimised by landscape and likely to diminish over time as it matures.
		Summer	x			1	2	High	Medium	Medium	Moderate	
11	<b>Traveling View - A5</b> - A long-range view of the site from the A5 bypass, looking south west towards the Hill Fort.	Winter			x	3	3	Low	High	Negligible	Negligible	N/A
		Summer			x	3	3	Low	Medium	Negligible	Negligible	N/A
12	<b>View from Whittington Road looking north west.</b> - A long-range view of the site from the A5 bypass, looking north west towards the Hill Fort, experienced by pssing cars and users of the footpath.	Winter		x		2	2	Medium	High	Minor	Minor	<b>Adverse</b> - Change to 'edge of settlement' character. Partial loss of views of open fields landscape, adjacent to the woodland. <b>Beneficial</b> - Assimilates into existing townscape. Views to Wood retained.
		Summer		x		2	2	Medium	Medium	Negligible	Minor	
13	<b>View from users of the footpath of the B5069 Looking North</b>	Winter			x	1	1	Medium	High	Medium	Moderate	<b>Adverse</b> - Change to 'edge of settlement' character. Partial loss of views of the woodland. <b>Beneficial</b> - Assimilates into existing townscape. Views to Hill Fort retained.Magnitude minimised by landscape and likely to diminish over time as it matures.
		Summer			x	1	1	Medium	Medium	Medium	Moderte	

Level of Views Importance:

R = Regional

D = District

L = Local

Degree of Visibility:

1 = Highly Visible

2 = Partially Visible

3 = Scarcely/Not Visible

Degree of Prominence:

1 = Very Prominent

2 = Reasonably Prominent

3 = Not Prominent

## APPENDIX 10.2

### Figures



Figure 1 - National Landscape Character Areas



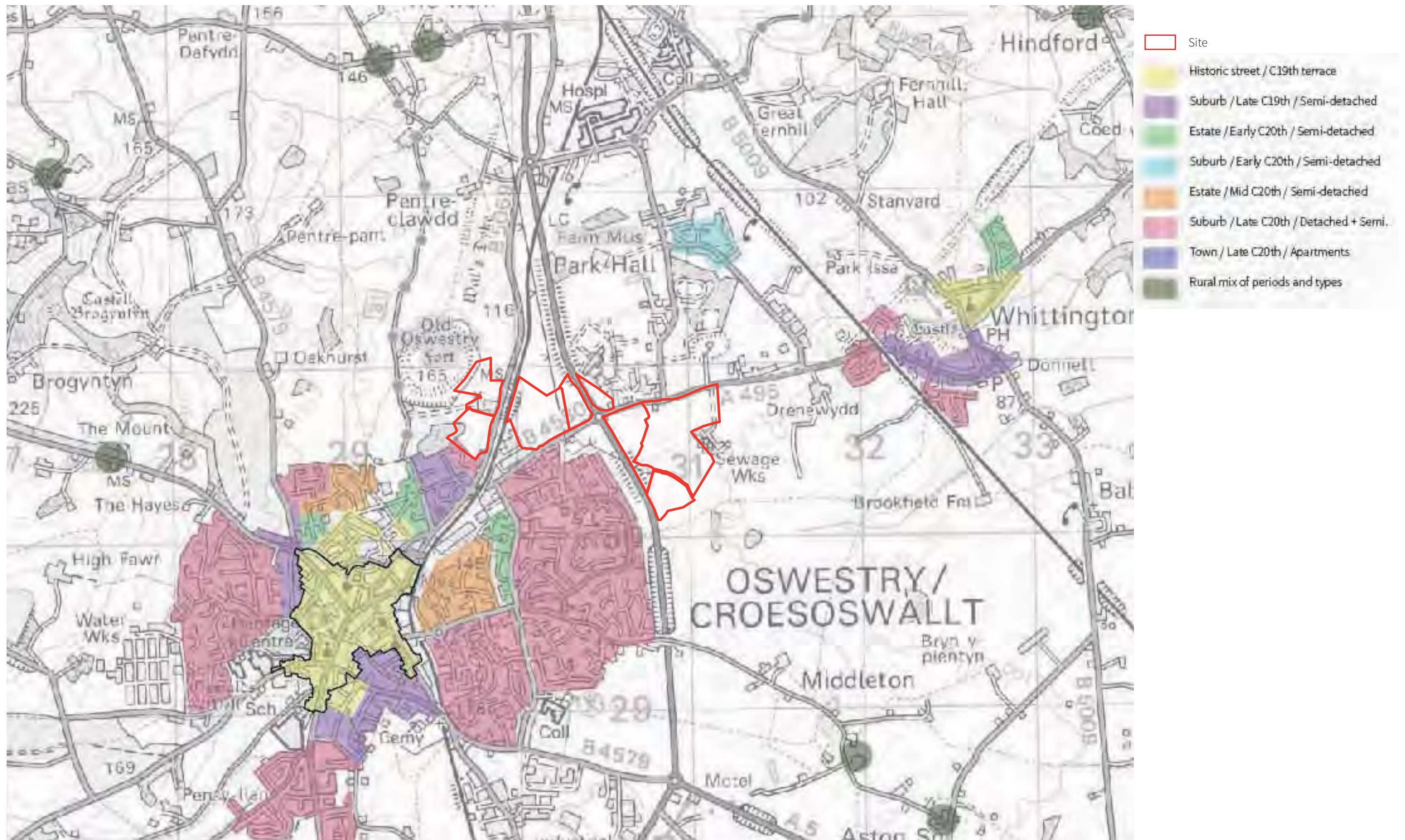


Figure 2 -Site Features





Figure 3 - Townscape Character





## Figure 4 - Local Designations

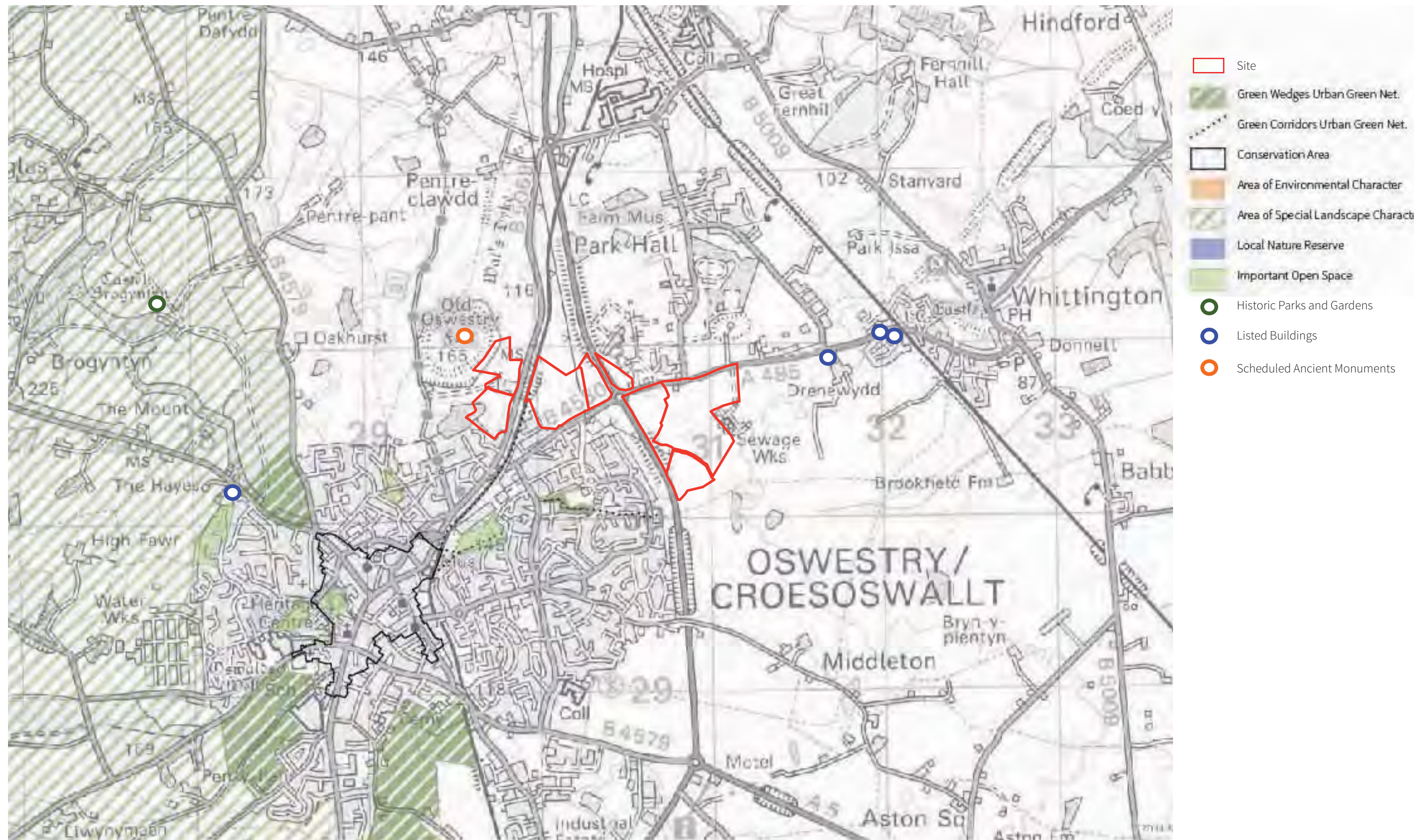




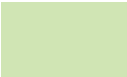
Figure 5 - Views Plan



KEY



Residential



Residential



Employment



## APPENDIX 10.3

### Photomontages None-verified



Existing



Proposed



View 5 (A5)



Existing



Proposed



View 6 - B5069 looking south west



## View 9

### Existing



### Proposed







**View 11 A5 looking north west**



## View 12

Existing



Proposed



View 12 Whittington Road looking north west



View 13 B5069 Looking North





Existing



Proposed



View 5 (A5)



## APPENDIX 10.4

### Photomontages verified







**View 5 (A5) - Existing**





View 5 (A5) - Proposed





View 6 - B5069 looking south west - Existing





View 6 - B5069 looking south west - Proposed





View 9 - Existing





View 9 - Proposed





View 11 A5 looking north west - Existing





View 11 A5 looking north west - Proposed

