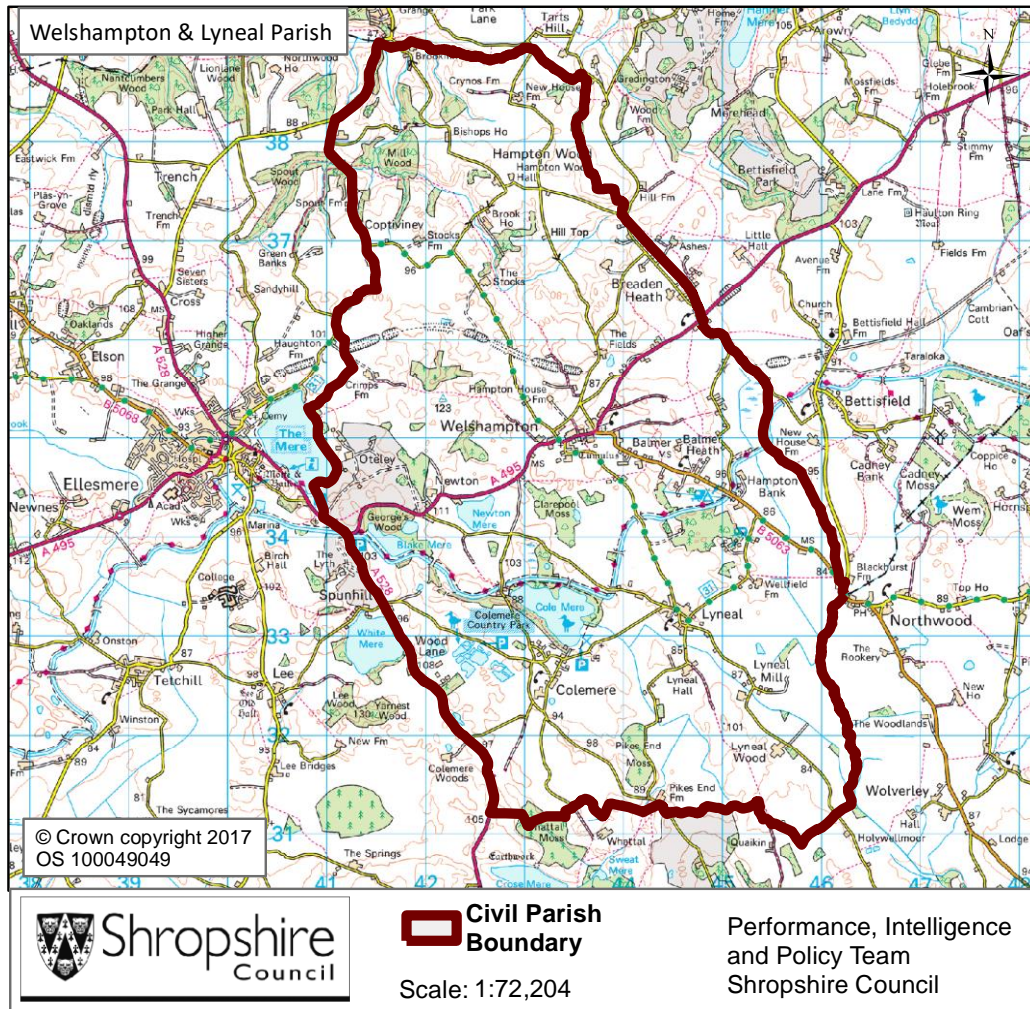


## Welshampton & Lyneal Parish



### Population

Key Facts:	Welshampton and Lyneal Parish
Area:	2879.0 hectares
Population Density:	0.30 persons per hectare
Total Population	852 (419 males, 433 females)
Household Population:	852 (100.0%)
Households: Dwellings:	354 364
Communal Establishment no. / population	1 Communal Establishment

Source: 2011 Census, National Statistics.

Please note: Ward boundary changes in 2009 mean it is not possible to compare over time.

	Total Population	% of Total Population			
		Welshampton and Lyneal	Shropshire	West Midlands	England
All ages	852	100.0	100.0	100.0	100.0
0 – 4	21	2.5	5.1	6.3	6.3
5 – 9	47	5.5	5.1	5.8	5.6
10 – 14	67	7.9	5.9	6.1	5.8
15 – 19	54	6.3	6.2	6.6	6.3
20 – 24	33	3.9	5.4	6.8	6.8
25 – 29	19	2.2	5.1	6.5	6.9
30 – 34	26	3.1	5.0	6.1	6.6
35 – 39	31	3.6	5.8	6.4	6.7
40 – 44	60	7.0	7.2	7.3	7.3
45 – 49	93	10.9	7.7	7.2	7.3
50 – 54	73	8.6	6.9	6.3	6.4
55 – 59	68	8.0	6.6	5.7	5.7
60 – 64	65	7.6	7.3	6.0	6.0
65 – 69	60	7.0	6.2	5.0	4.7
70 – 74	55	6.5	4.9	4.0	3.9
75 – 79	43	5.0	3.8	3.2	3.1
80 – 84	23	2.7	2.9	2.4	2.4
85 – 89	12	1.4	1.8	1.5	1.5
90 Plus	2	0.2	0.9	0.7	0.8

### **Population Age Structure**

- Early years: 2.5% (21 children) of the population were aged 0 to 4 years in March 2011. This compares with 5.1% at County level, 6.3% regionally and 6.3% nationally.
- School age: 17.1% (146 children) of the population were aged 5 to 17 years in March 2011. This compares with 14.9% at County level, 15.8% regionally and 15.1% nationally.
- Working age: 57.5% (490 people) of the population were aged 18 to 64 years in March 2011. This compares with 59.3% at County level, 61.0% regionally and 62.3% nationally.
- Retirement age: 22.9% (195 people) of the population were aged 65 and over in March 2011. This compares with 20.7% at County level, 16.9% regionally and 16.3% nationally.
- Over 85 year olds: 1.6% (14) of the population were aged 85 and over in March 2011. This compares with 2.7% at County level, 2.2% regionally and 2.2% nationally.

## Diversity

The 2011 Census showed Welshampton and Lyneal Parish had a black and minority ethnic group population of 10 (1.17%). The largest broad ethnic group is 'Asian' (within this the largest group is 'Chinese').

- When asked about their religion 23.6% (201 people) identified themselves as having no religion or did not state it on the form. The majority of people (76.1%) identified themselves as Christian and 0.4% (3 people) identified themselves as having an alternative religion.
- The 2011 Census showed that 1 person could not speak English well and 0 persons could not speak English at all.

## Car Ownership

- The 2011 Census showed that 22 households (6.2%) did not own a car and subsequently are reliant on other forms of transport such as public transport services. In total 619 cars are owned by households resident in the place plan area.

## **Health**

### **General Health**

The 2011 Census asked three questions relating to health and the provision of unpaid care. The questions relate to whether people felt their general health was good, whether they looked after or gave help or support to other family members, friends, neighbours or others and lastly whether their day to day activities were limited because of a health problem or disability.

At the time of the 2011 Census 46% of people in Welshampton and Lyneal said that they felt they were in "Very Good Health", this compares to 46% for Shropshire as a whole.

0.5% reported that they were in "Very Bad Health". This is slightly less than the overall result for Shropshire (1%).

### **Provision of Unpaid Care**

The question asked "do you look after, or give any help or support to family members, friends, neighbours or others because of either; a long term physical or mental ill health/disability? or because of problems related to old age?"

At the time of the Census 9% said that they were providing 1 to 19 hours of unpaid care a week. This is slightly higher than the Shropshire figure of 7%.

1% said they provided between 20 and 49 hours per unpaid care. This is in line with the Shropshire figure of 1%.

2% said they provided over 50 hours of unpaid care. This is in line with the figure for Shropshire as a whole (2%) and the figure for England & Wales (2%).

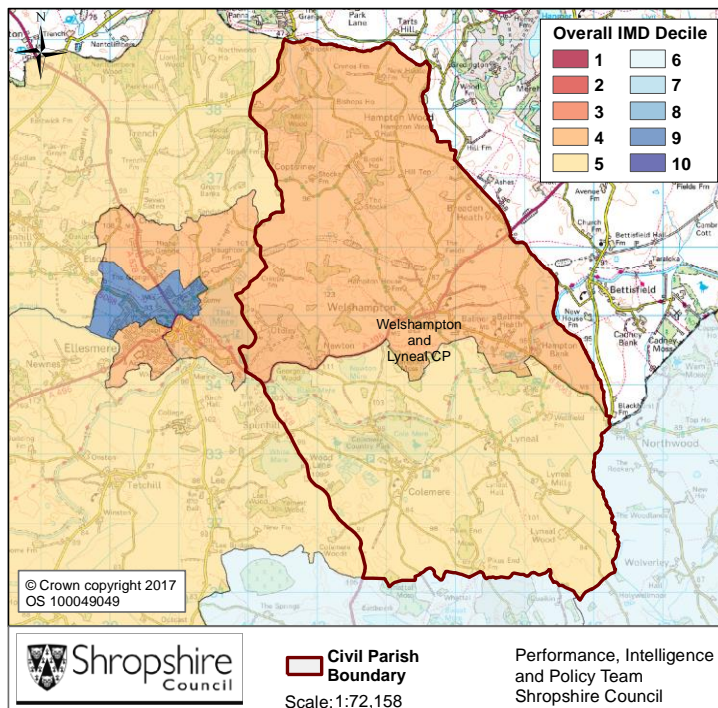
### **Long Term Illness or Disability**

The Census asked "Are your day-to-day activities limited a lot due to a health problem or disability which has lasted, or is expected to last, at least 12 months?"

7% said that their day-to-day activities limited a lot due to a health problem or disability. This is less than the County figure of 8%.

The percentage who reported their day-to-day activities were limited a little was 11%. This is slightly higher than the figure of 10% for Shropshire as a whole.

## Index of Multiple Deprivation



The lower super output areas that cover Welshampton & Lyneal Parish fall within Decile 4 and 5 nationally.

Decile 1 is the most deprived nationally and Decile 10 the least deprived nationally.

*Source: IMD 2015, Department for Communities and Local Government, © Crown Copyright 2017*

## Households and Housing

- There were 354 households in Welshampton and Lyneal at the time of the 2011 Census.
- The parish had 852 usual residents and covers an area of 2879 hectares.
- 159 households were owner occupiers (owned outright) equating to 44.9% of all households. There were 105 households (29.7%) who owned their home with a mortgage or loan.
- There were 52 households (14.7% of all households) that privately rented their home from a landlord. There were also 11 households (3.1% of all households) who privately rented from a landlord classified as 'Other'.
- 1 households were renting social housing from the Council totalling 0.3% of all households. There were also 18 households (5.1%) renting social housing from 'Other' sources.
- In Welshampton and Lyneal there were 249 detached dwellings representing 68.4% of all dwellings. There were also 89 semi-detached and 23 terraced dwellings equating to 24.5% and 6.3% respectively.
- 14.1% of all households were one person pensioner households.
- 26.0% of households in the area had dependent children. The number of married couple households with dependent children was 58 and the number of cohabiting couples with dependent children was 12.
- There were 16 lone parent households (with dependent children), which equates to 4.5% of all households.

## **Unemployment and Labour Market**

### Unemployment

- At the time of the Census, there were 13 residents who were unemployed but available for work. This is 2.1% of the 16-74 year old population, compared to 3.3% for Shropshire.
- 5 young people (aged 16-24) were unemployed.
- 23.08% of all unemployed people were classed as long-term unemployed in 2011. This is the equivalent of 3 people.

### Labour Force

- 416 Welshampton and Lyneal residents aged 16-74 are economically active.
- 30.9% of the Welshampton and Lyneal population has level 4 or above qualifications compared with 27.5% in Shropshire and 27.4% in England.
- The number with no formal qualifications at all stands at 167 people – at 23.7% of the population (aged over 16), this compares with the county average of 22.5%.
- 42.0% of the population work in standard occupation classifications 1-3 (managers, directors and senior officials, professional, associate professional and technical) and 13.1% work in standard occupation classifications 8 and 9 (process, plant and machine operatives and elementary occupations).

### Travel to Work (Census 2011)

- 16.5% of the population in Welshampton and Lyneal are self-employed, and 11.2% work from home compared with 5.6% for Shropshire.
- The car is used as the main means of travel to work for 44.2%, while 1.3% use public transport.

If you require any further information, or have any other research requests, please contact:

Performance, Intelligence and Policy Team, Shropshire Council,  
Shirehall, Abbey Foregate, Shrewsbury, Shropshire, SY2 6ND

Email: [commissioning.support@shropshire.gov.uk](mailto:commissioning.support@shropshire.gov.uk)

Web: [www.shropshire.gov.uk/facts-and-figures](http://www.shropshire.gov.uk/facts-and-figures)

Twitter: @ShropinFocus