

# Shropshire Sectors

**Produced by the Information, Intelligence and Insight Team**

**March, 2018**

# Top Shropshire Sectors

The key business sectors in Shropshire reflect the county’s rurality, natural environment and ageing population. Land-based industries, health (including care), retail and tourism represent important sectors for the county, and Shropshire also supports a strong food and drink industry. Micro businesses dominate, but Shropshire is also home to a number of large and successful international businesses.

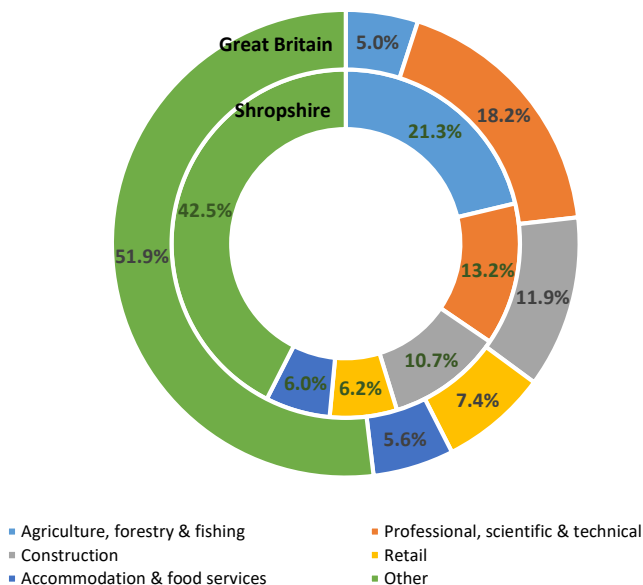
The top five employment sectors account for more than 45% of overall employment in Shropshire in 2016. Health is the largest, absorbing 16.8% of jobs, ahead of manufacturing with 10.1% and retail with 10.9%. Education and accommodation and food services accounted for 9.2% and 8.4% respectively.

In terms of the number of businesses operating, the highest proportion are categorised as agriculture, forestry & fishing (employment figures exclude farm-based agriculture), accounting for more than a fifth of the total. Professional, scientific and technical and construction represent the second and third largest sectors by business numbers.

Sector categories for GVA<sup>1</sup> are relatively broad, with distribution (retail and wholesale), transport and accommodation and food accounting for 21.5% of all GVA generated in Shropshire in 2016. Other major contributors to Shropshire’s GVA include public services (administration, education and health) and real estate activities.

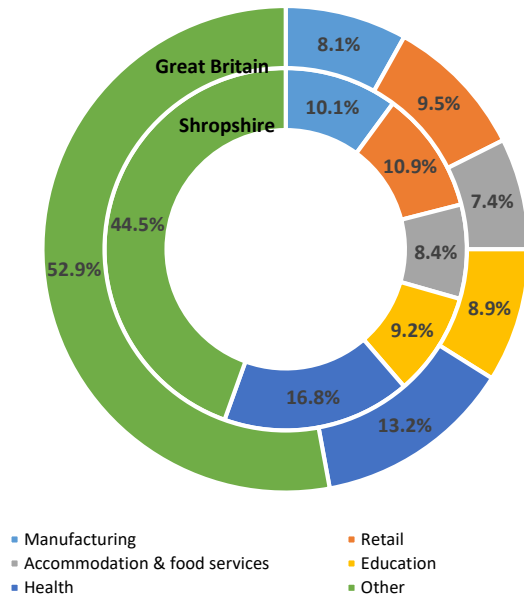
The following charts show how Shropshire’s sector breakdown compares with the national average.

**Top Five Sectors by Number of Businesses, 2017**



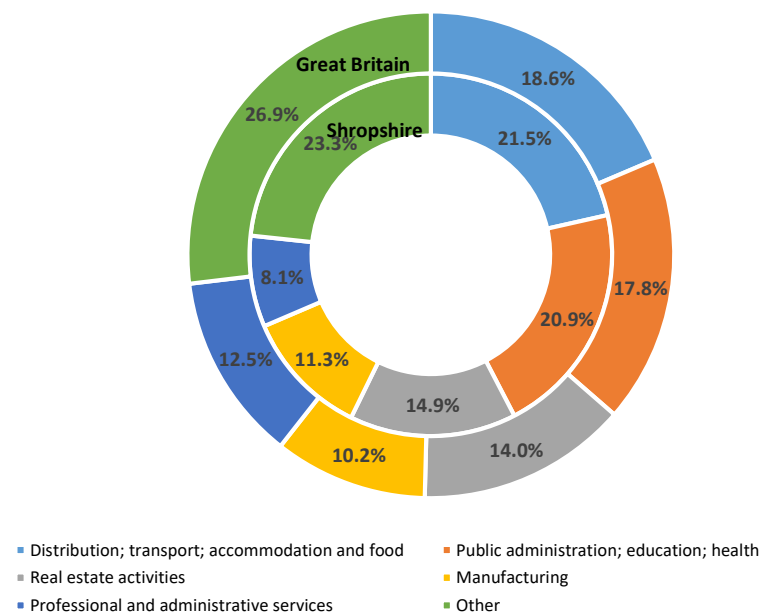
Source: Inter-Departmental Business Register, 2017 © Crown Copyright Office for National Statistics, 2018

**Top Five Employment Sectors, 2016**



Source: Business Register of Employment Survey, 2016 © Crown Copyright Office for National Statistics, 2018

**Top Five Sectors by GVA Generation, 2016**



Source: Regional Gross Value Added, 2016 © Crown Copyright Office for National Statistics, 2018

Note: <sup>1</sup> GVA is a means of measuring the contribution to the economy made by producers or sectors. It is the difference between the value of goods and services produced and the cost of raw materials and other inputs which are used in production.

## Business Counts

The total number of enterprises in Shropshire in 2017 was 15,650, up by 1%, or 170 businesses over the previous year. Since 2010, the number of enterprises has risen by 1,510, which is the equivalent of a 10.7% increase.

There are more than 3,000 businesses in the agriculture sector, more than 2,000 professional, scientific and technical businesses and more than 1,000 in construction and business administration and support services.

The number of public administration and defence organisations was twice as high in 2017 as it was in 2010, although the number has fallen back from 105 to 70 in 2017.

Sectors which have grown the most rapidly since 2010 in terms of business numbers include mining, quarrying and utilities (+30%), information and communication (+21.9%), property (+20%), professional scientific and technical (+40.8%), education (+33.3%) and health (+27.8%).

The number of retail, wholesale and transportation businesses has declined.

Industry	Number of businesses									
	2010	2011	2012	2013	2014	2015	2016	2017	Change 2010-2017	% change 2010-2017
Agriculture, forestry & fishing	3,005	3,065	3,060	3,225	3,260	3,295	3,330	3,330	325	10.8%
Mining, quarrying & utilities	50	55	55	60	60	60	65	65	15	30.0%
Manufacturing	760	745	760	760	740	785	810	810	50	6.6%
Construction	1,680	1,580	1,515	1,510	1,520	1,595	1,630	1,680	0	0.0%
Motor trades	500	490	505	490	490	515	515	505	5	1.0%
Wholesale	685	675	665	660	650	650	655	670	-15	-2.2%
Retail	1,085	1,060	1,055	1,020	1,025	1,005	980	975	-110	-10.1%
Transport & storage (inc postal)	480	470	450	440	435	445	450	460	-20	-4.2%
Accommodation & food services	840	840	850	840	840	945	950	940	100	11.9%
Information & communication	525	520	545	545	565	600	625	640	115	21.9%
Financial & insurance	195	190	190	170	160	180	185	185	-10	-5.1%
Property	425	435	435	450	480	495	500	510	85	20.0%
Professional, scientific & technical	1,470	1,495	1,590	1,665	1,760	1,900	2,000	2,070	600	40.8%
Business administration & support services	985	900	890	840	885	1,030	1,040	1,030	45	4.6%
Public administration & defence	35	35	55	80	90	100	105	105	70	200.0%
Education	180	180	190	190	190	205	210	240	60	33.3%
Health	450	460	465	465	505	530	550	575	125	27.8%
Arts, entertainment, recreation & other services	795	780	795	775	770	870	885	865	70	8.8%
<b>Total</b>	<b>14,140</b>	<b>13,975</b>	<b>14,065</b>	<b>14,180</b>	<b>14,420</b>	<b>15,210</b>	<b>15,480</b>	<b>15,650</b>	<b>1,510</b>	<b>10.7%</b>

Source: Inter-Departmental Business Register, 2017 © Crown Copyright Office for National Statistics, 2018

## Employment

There were 119,000 employee jobs in Shropshire in 2016, which represents a rise of 8,000 jobs (+7.2%) compared with 2010. The number of jobs was relatively stable between 2010 and 2013 but since then has risen by 2,500 jobs in 2014, by 1,500 jobs in 2015 and by 3,500 jobs in 2016.

The fastest growing sectors in Shropshire in terms of job growth in 2016 were:

- Heath (+3,000 jobs)
- Professional and scientific (+1,000 jobs)
- Arts and entertainment (+500 jobs)
- Accommodation and food services (+500 jobs)
- Retail (+500 jobs)
- Manufacturing (+500 jobs)

In contrast, substantial job losses were sustained in construction (-1,500), mining, quarrying and utilities (-400), finance and insurance (-300) and education (-500).

Over the six year period to 2016, the fastest growing sectors were:

- Professional and scientific: +125%
- Property: +40%
- Accommodation and food services: +33%
- Arts, entertainment, recreation: +27%

The total number of jobs in Shropshire – including employees, the self-employed, government supported trainees and HM forces - stood at an estimated 151,000 in 2016.

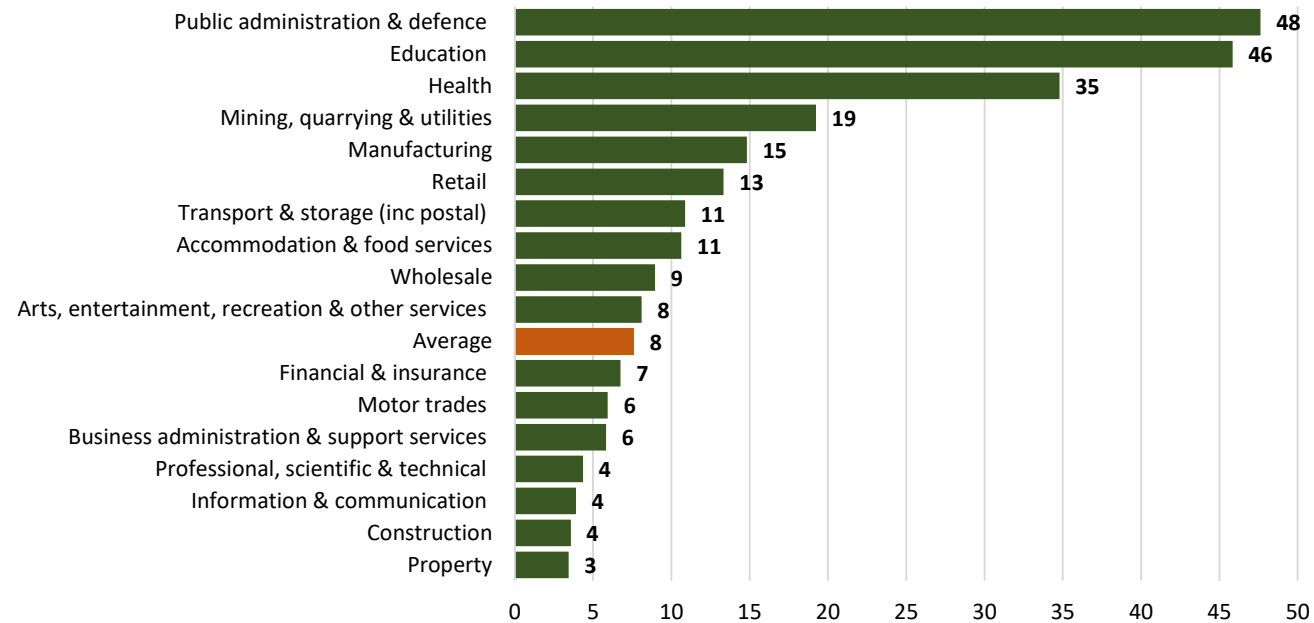
	Number of Jobs								
	2010	2011	2012	2013	2014	2015	2016	Change 2010-2016	% change 2010-2016
Agriculture, forestry & fishing	200	200	200	100	100	800	300	100	25.0%
Mining, quarrying & utilities	1,300	1,800	2,300	1,500	1,900	1,500	1,100	-200	-10.0%
Manufacturing	13,000	12,500	11,500	11,500	12,000	11,500	12,000	-1,000	-7.7%
Construction	6,000	6,000	5,500	6,500	6,000	8,000	6,500	500	8.3%
Motor trades	3,000	3,000	3,300	2,800	3,300	3,300	3,300	300	8.3%
Wholesale	5,000	4,500	5,000	5,000	6,000	5,500	5,500	500	10.0%
Retail	13,000	12,500	12,500	12,000	13,000	12,000	12,500	-500	-3.8%
Transport & storage (inc postal)	4,500	4,300	5,000	4,300	4,800	5,500	5,500	1,000	22.2%
Accommodation & food services	7,500	7,500	8,500	7,500	8,500	9,500	10,000	2,500	33.3%
Information & communication	3,000	2,300	2,300	2,300	2,500	2,400	2,500	-500	-16.7%
Financial & insurance	2,000	1,800	1,300	1,400	1,000	1,400	1,100	-900	-43.8%
Property	1,300	1,600	2,000	2,000	2,000	1,900	1,800	500	40.0%
Professional, scientific & technical	4,000	5,500	6,000	6,000	5,500	8,000	9,000	5,000	125.0%
Business administration & support services	5,500	5,500	5,000	5,500	5,500	5,500	5,500	0	0.0%
Public administration & defence	6,500	6,000	5,500	5,500	4,800	5,000	5,000	-1,500	-23.1%
Education	11,000	10,500	12,000	12,000	11,500	11,500	11,000	0	0.0%
Health	19,000	19,500	20,000	20,500	20,500	17,000	20,000	1,000	5.3%
Arts, entertainment, recreation & other services	5,500	6,500	5,500	6,000	5,000	6,500	7,000	1,500	27.3%
Total	111,500	111,500	113,000	112,000	114,500	116,000	119,500	8,000	7.2%

Source: Business Register of Employment Survey, 2016 © Crown Copyright Office for National Statistics, 2018

Note: Excludes farm-based agriculture, sole traders and HMO Armed forces

All figures rounded to the nearest 100. Calculations based on unrounded figures

## Average Number of Employees per Enterprise by Sector, 2016/17



Source: Business Register and Employment Survey, 2016/Inter-departmental Business Register, 2017 © Crown Copyright 2018, Office for National Statistics  
Note: Excludes agriculture

The relative importance of sectors to Shropshire's economy can also be analysed according to their location quotient (the relative importance of a sector compared with the national average). It is evident that motor trades, health and arts, entertainment and recreation all provide considerably more employment in Shropshire compared with the national average. Manufacturing, construction, wholesale, retail, accommodation and food services all have above average representation, while employment in public administration and defence and education are broadly in line with the national average.

In contrast, sectors which are under-represented in Shropshire include mining, quarrying and utilities, transport and storage, information and communication, financial and insurance, property, professional, scientific and technical and business administration and support.

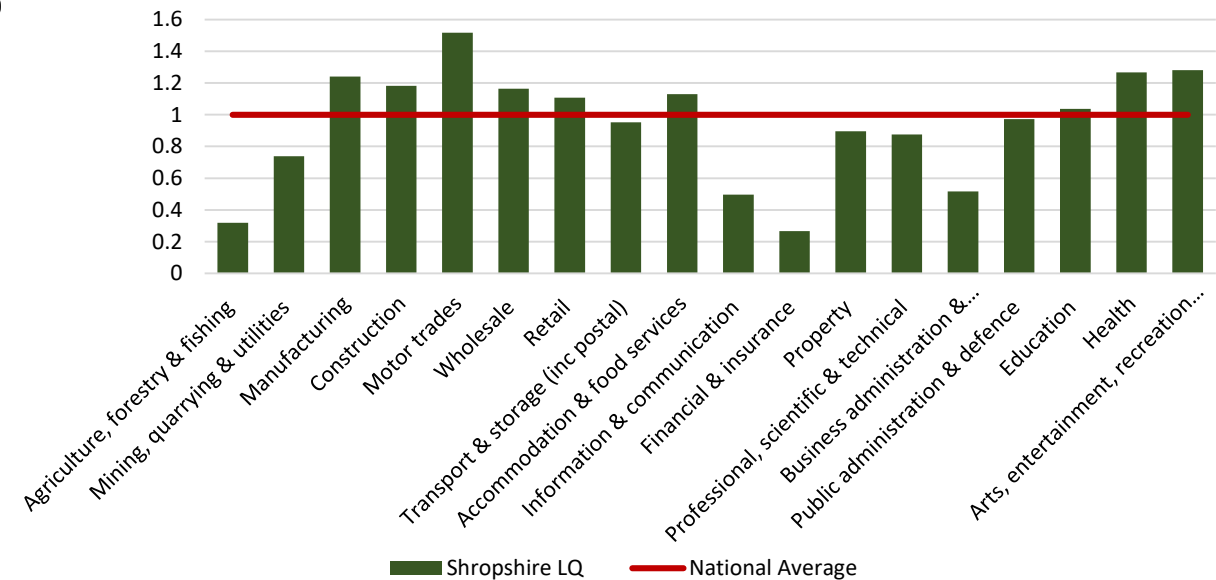
The average number of employees per business in Shropshire was eight in 2016/17. This compares with an average of 11 nationally.

Public service organisations tend to be considerably larger than private sector employers. Public administration and defence organisations employed an average of 48 in 2016/17, while education providers employed an average of 46 and health organisations 35.

Businesses in the mining, quarrying and utilities, manufacturing, retail, transport & storage, accommodation and food services and wholesale sectors are also larger than average.

At the other end of the scale, businesses in property, construction, information and communication and professional, scientific & technical sectors employ fewer than five people each on average.

## Relative importance of broad industrial groups to employment in Shropshire, 2016



Source: Business Register and Employment Survey, 2016 © Crown Copyright 2018, Office for National Statistics  
Note: All figures rounded to nearest 100. All calculations based on unrounded data, Agriculture, forestry and fishing excludes all farm agriculture